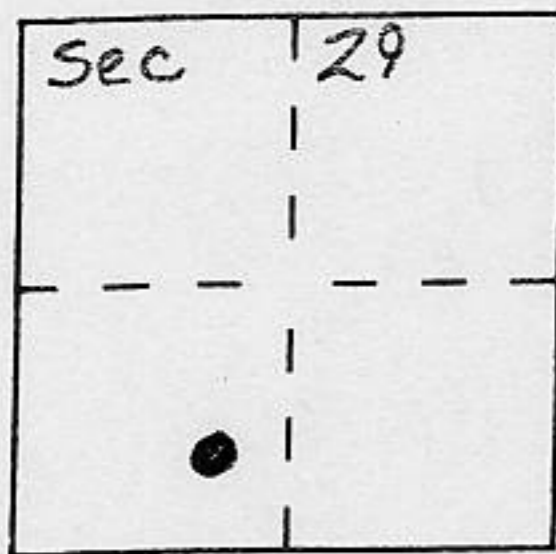


CORNER RECORD

Document Number _____

City of _____ County of Placer, California

Brief Legal Description LOT 9 BLOCK "E" SQUAW VALLEY ESTATES NO. 1
BOOK "E" MAPS PAGE 47



T.16N
R.16E
M.D.M.

CORNER TYPE

- Government Corner Control
 Meander Property
 Rancho Other
 Date of Survey 11/9/93

COORDINATES (Optional)

N. _____
E. _____
Zone _____ Datum _____
Elev. _____

Corner — Left as found Found and tagged Established Reestablished Rebuilt

Identification and type of corner found: Evidence used to identify or procedure used to establish or reestablish the corner:

● = FOUND 1/2" REBAR PER BOOK "E"/MAPS/47

● = FOUND 3/4" IRON PIPE, NO TAGS

A description of the physical condition of the monument as found and as set or reset:

X = SET CHISEL "X" ON ROCK 1/2' BELOW GROUND

O = SET 3/4" IRON PIPE W/PLASTIC PLUG STAMPED L.S. 5549

JN: 93122

SURVEYOR'S STATEMENT

This Corner Record was prepared by me or under my direction in conformance with the Land Surveyors' Act on NOV. 12 19 93

Signed Charles R. Sage Jr. L.S. or R.C.E. Number L.S. 5549
EXP. 6-30-97

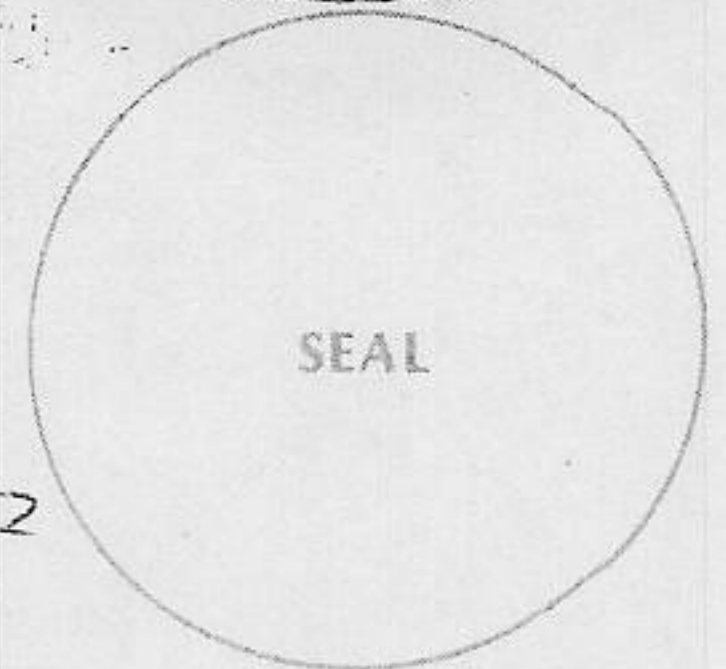
COUNTY SURVEYOR'S STATEMENT

This Corner Record was received JAN 4 19 94 and examined

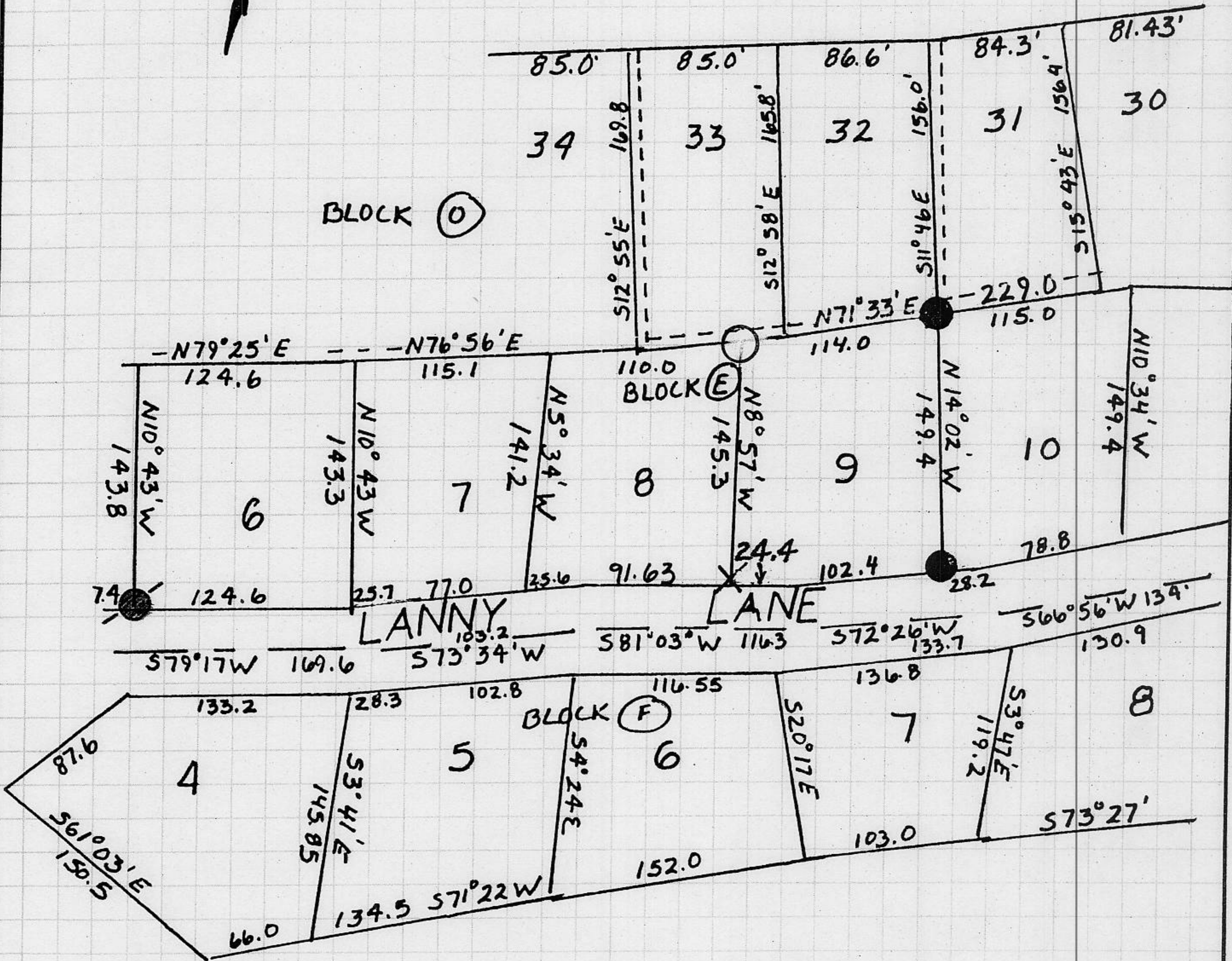
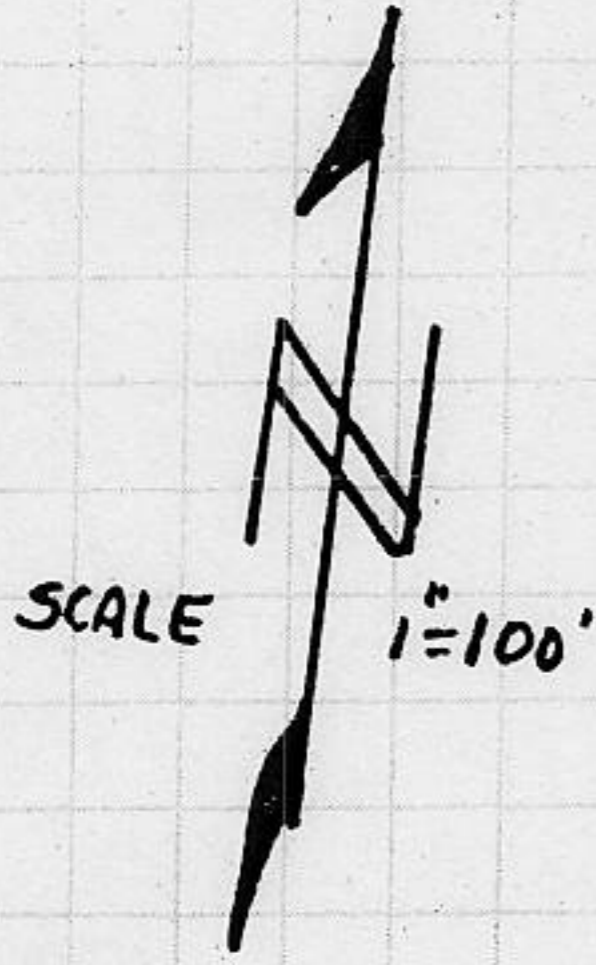
and filed JAN 12 19 94

Signed John Rubens Title DEPUTY COUNTY SURVEYOR

County Surveyor's Comment _____



BOOK 4 CORNER RECORDS PAGE 9



NOTE: BEARINGS & DISTANCES SHOWN ARE RECORD PER E/MAPS/47. NO MATERIAL DESCREANCIES WITH RECORD INFORMATION WERE FOUND.