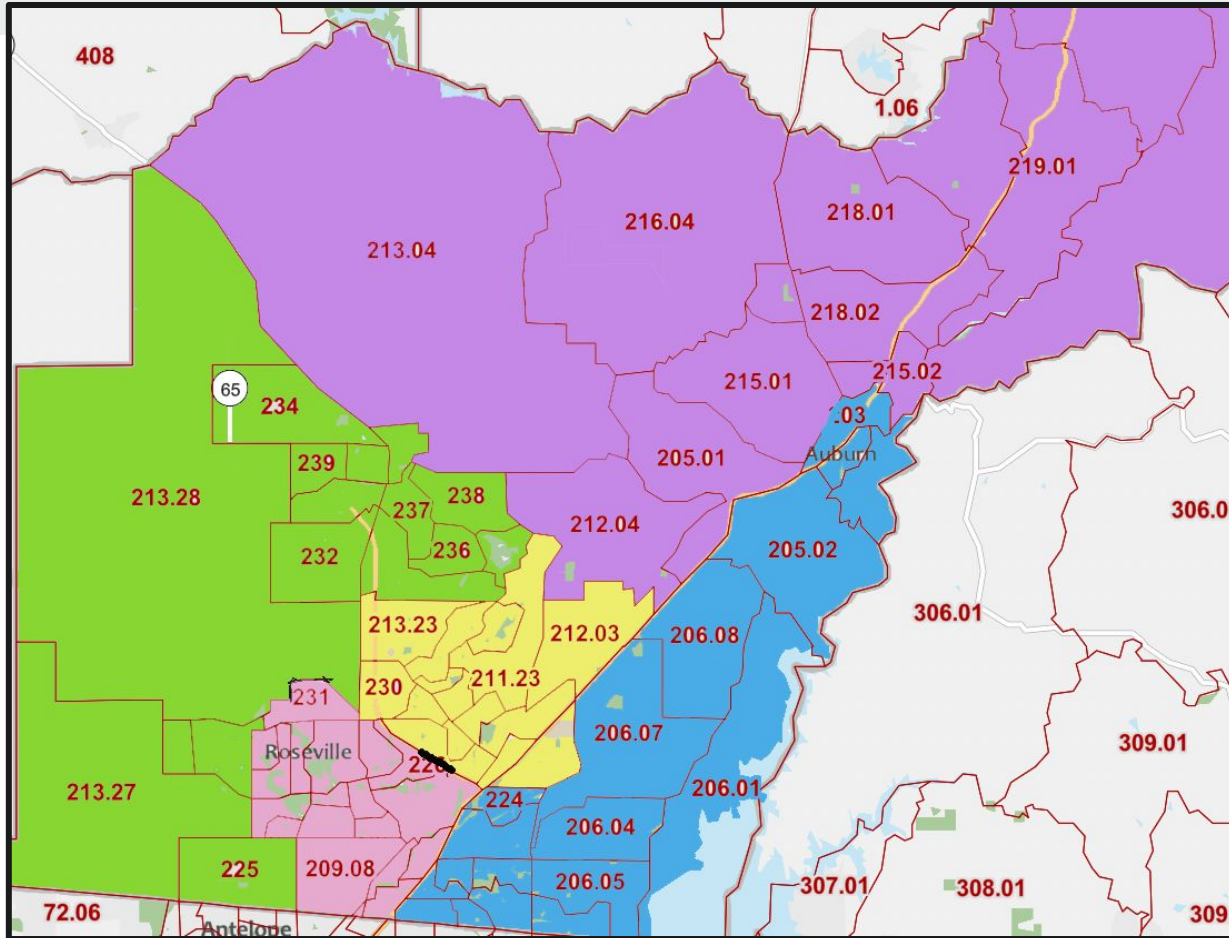




# Map P

*for Placer County*



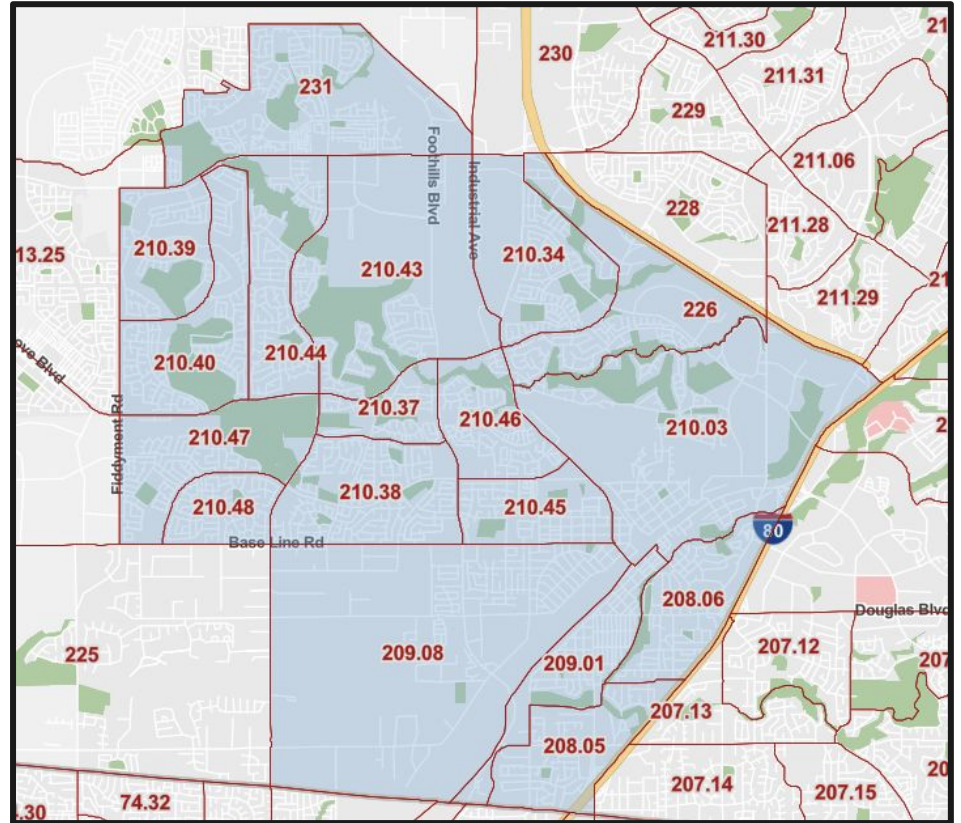
## Differentiating Factors

- Preserves Historic Roseville Neighborhoods
- Preserves West Roseville Community of Interest
- Preserves City of Rocklin as Requested (like Map B)
- Uses I-80 as a natural divider

# District 1

## Characteristics

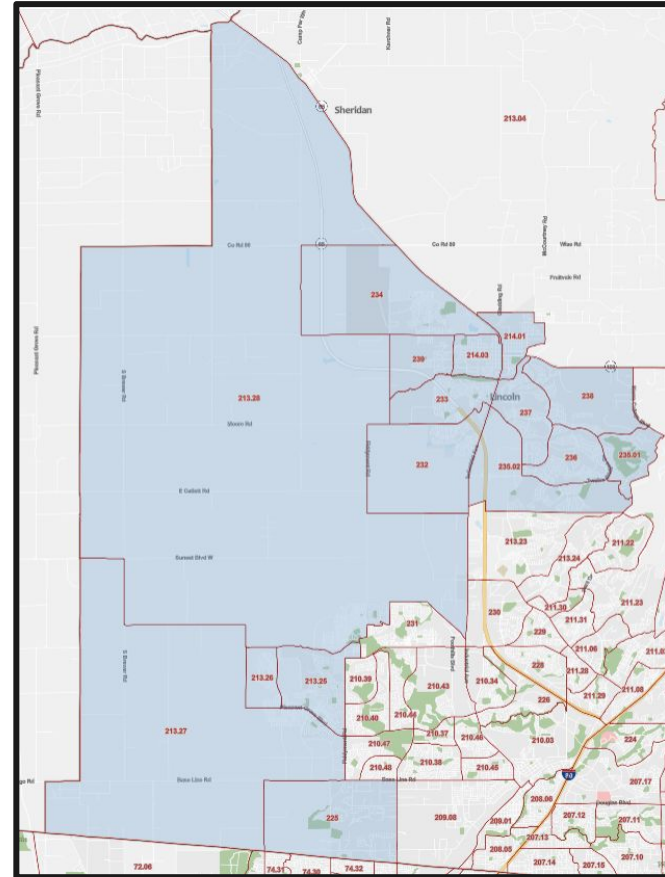
- Uses I-80 & 65 as natural boundaries
- Preserves Downtown and Old Roseville
- Runs up to Fiddyment where many newer neighborhoods are located



# District 2

## Characteristics

- Preserves West Roseville as a Community of Interest (West of Fiddymont)
- Preserves City of Lincoln as a Community of Interest
- Includes high growth parts of the county

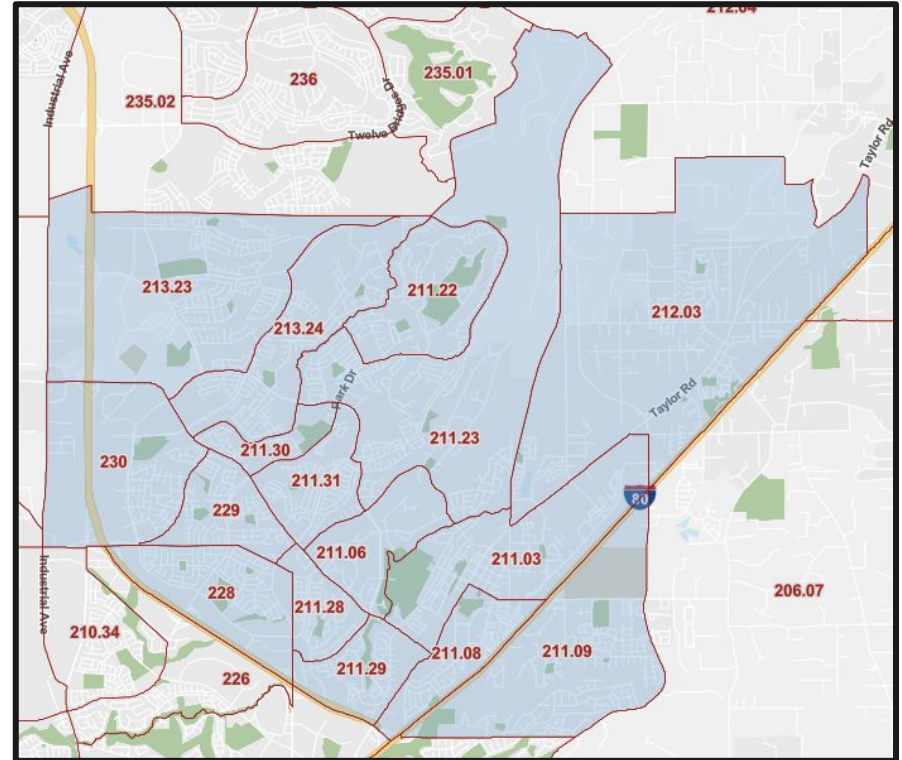




## District 3

### Characteristics

- Preserves City of Rocklin as a Community of Interest
- Uses 65 as a natural boundary

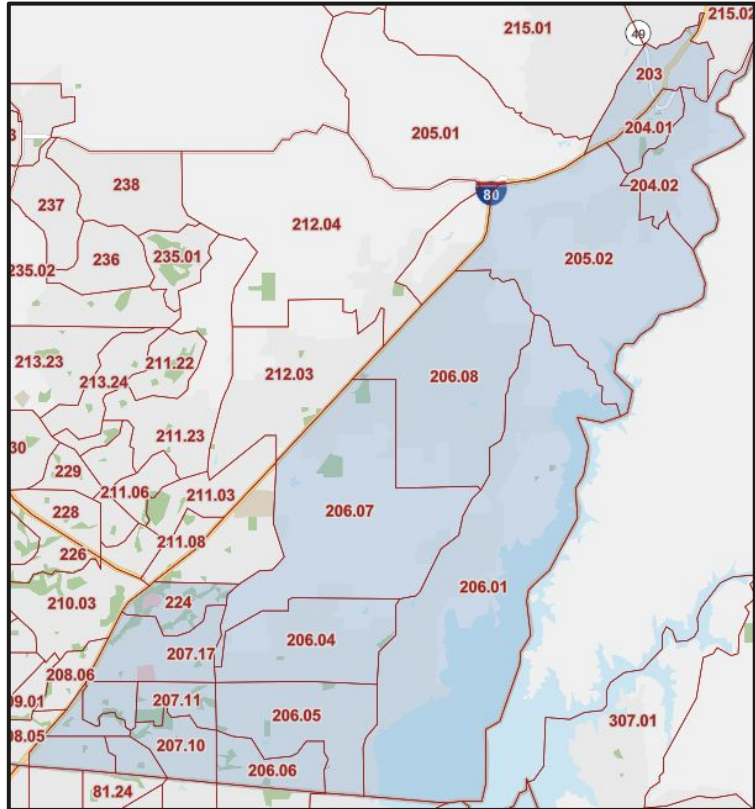


---

# District 4

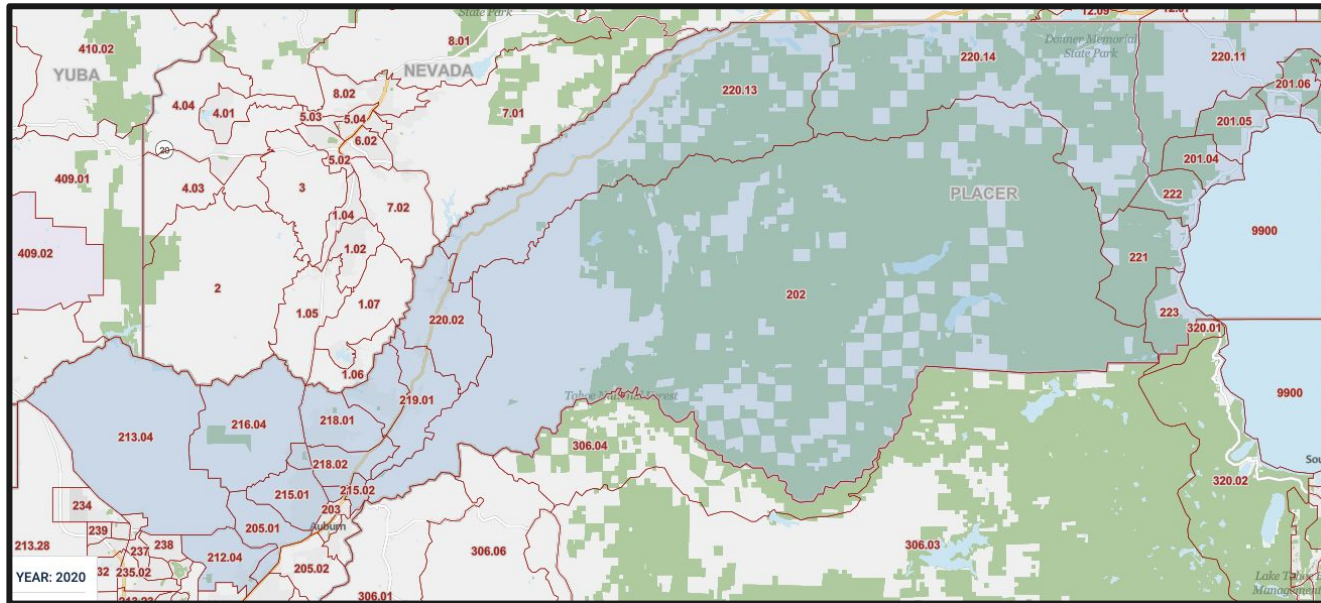
## Characteristics

- Uses i-80 as a natural boundary
- Preserves similar neighborhoods of Roseville & Granite Bay
- Includes Auburn in with South Placer





# District 5



# Proposed Map P



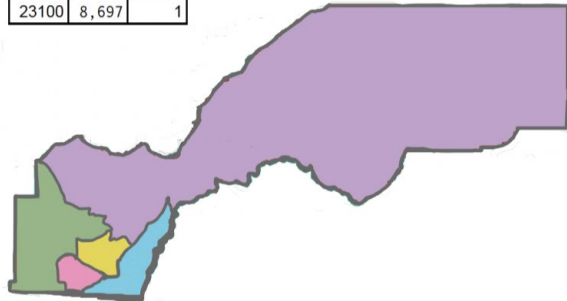
District 1		
Total: 83,539		
Tract	Pop.	District
20805	4,202	1
20806	3,576	1
20901	2,777	1
20908	7,512	1
21003	6,784	1
21034	4,331	1
21037	2,209	1
21038	7,627	1
21039	1,703	1
21040	3,123	1
21043	3,760	1
21044	5,765	1
21045	3,533	1
21046	5,056	1
21047	4,463	1
21048	3,439	1
22600	4,982	1
23100	8,697	1

District 2		
Total: 81,475		
Tract	Pop.	District
21325	9,279	2
21326	4,394	2
21327	5,643	2
21328	8,556	2
21401	3,056	2
21403	7,164	2
22500	4,689	2
23200	6,078	2
23300	6,333	2
23400	5,721	2
23501	1,245	2
23502	5,315	2
23600	4,361	2
23700	3,301	2
23800	3,211	2
23900	3,129	2

District 3		
Total: 81,653		
Tract	Pop.	District
23000	3,914	3
22900	5,765	3
22800	4,986	3
21324	6,321	3
21323	11,223	3
21203	7,431	3
21131	5,722	3
21130	2,272	3
21129	3,453	3
21128	3,244	3
21123	7,558	3
21122	3,455	3
21109	5,594	3
21108	3,410	3
21106	2,401	3
21103	4,904	3

District 4		
Total: 79,831		
Tract	Pop.	District
20300	4,639	4
20401	2,242	4
20402	3,511	4
20502	4,317	4
20601	7,257	4
20604	5,927	4
20605	5,885	4
20606	4,296	4
20607	5,099	4
20608	3,811	4
20710	4,408	4
20711	4,558	4
20712	3,855	4
20713	3,323	4
20714	3,848	4
20715	3,074	4
20717	4,888	4
22400	4,893	4

District 5		
Total: 78,241		
Tract	Pop.	District
20104	1,327	5
20105	1,319	5
20106	1,643	5
20107	3,315	5
20200	6,429	5
20501	2,973	5
21204	2,748	5
21304	6,258	5
21501	5,911	5
21502	3,806	5
21603	4,927	5
21604	3,421	5
21801	4,663	5
21802	6,052	5
21901	3,315	5
21902	4,462	5
22002	6,569	5
22011	2,292	5
22013	2,833	5
22014	1,529	5
22100	901	5
22200	902	5
22300	646	5







## Helpful Links

Census Data: <https://statewidedatabase.org/redistricting2021/pl94-legacy.html>

Map Visualization Tool: <https://bit.ly/3FMDoMC>

Community Surveys:

<https://www.placer.ca.gov/DocumentCenter/View/55809/Redistricting-Community-Survey-Results>