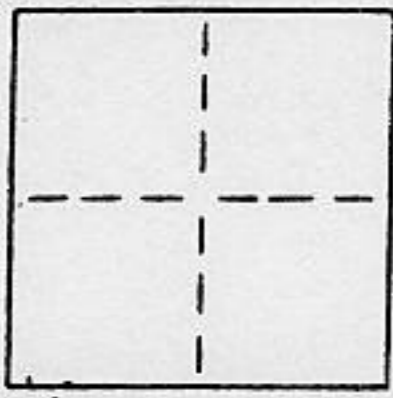


CORNER RECORD

COUNTY OF PLACER T. 12N R. 7E MDB MERIDIAN CALIFORNIA

CORNER TYPE: GOV'T. CORNER MEANDER RANCHO CONTROL OTHER
 CORNER IDENTIFICATION - DATE OF VISIT NOV 22 1993



1/2" IRON PIPE AS SHOWN ON RECORD OF SURVEY BOOK 3, PAGE 10 E 1/2 SECTION 16, T12N ~ R7E

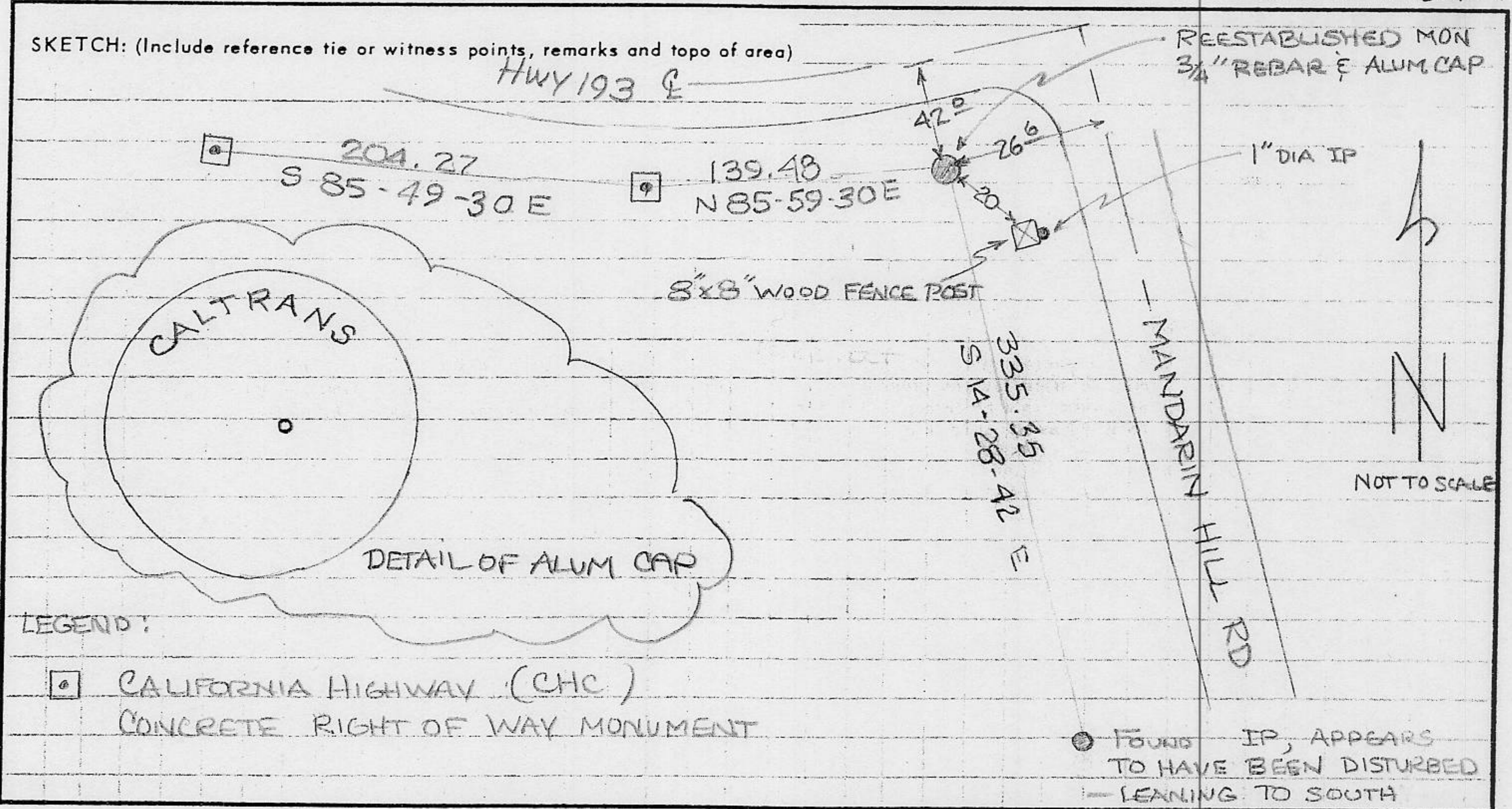
CORNER - LEFT AS FOUND FOUND AND TAGGED REESTABLISHED OBLITERATED CORNER REBUILT

PHYSICAL DESCRIPTION OF CORNER FOUND: EVIDENCE AND METHOD USED TO IDENTIFY OR REESTABLISH
REESTABLISHED A PROPERTY CONTROLLING MONUMENT WITHIN STATE ROUTE 193 RIGHT OF WAY FROM CCS 27 ZONE 2 BY BRNG/DISTANCE RELATIONSHIP WITH ADJOINING CHC RIGHT OF WAY MONUMENTS AND ADJOINING PARCEL CORNER

PHYSICAL DESCRIPTION OF MONUMENTS REBUILT OR PERPETUATED
REESTABLISHED PROPERTY CONTROLLING MONUMENT WITHIN PLACER ROUTE 193 RIGHT OF WAY. SET A 24 INCH # 6 REBAR WITH A 1 1/2 INCH DIA ALUMINUM CAP, PUNCHED AND STAMPED "CALTRANS", 0.2 FT ABOVE EXISTING GROUND

CALIFORNIA COORDINATE SYSTEM ORDER: FIRST SECOND THIRD
 STATIONS USED: NGS (USC & GS) STATE COUNTY OTHER STATION _____ STATION _____
 ZONE 2 ELEVATION _____ NORTHINGS (Y) 447074.41 EASTINGS (X) 2229037.45

SKETCH: (Include reference tie or witness points, remarks and topo of area)

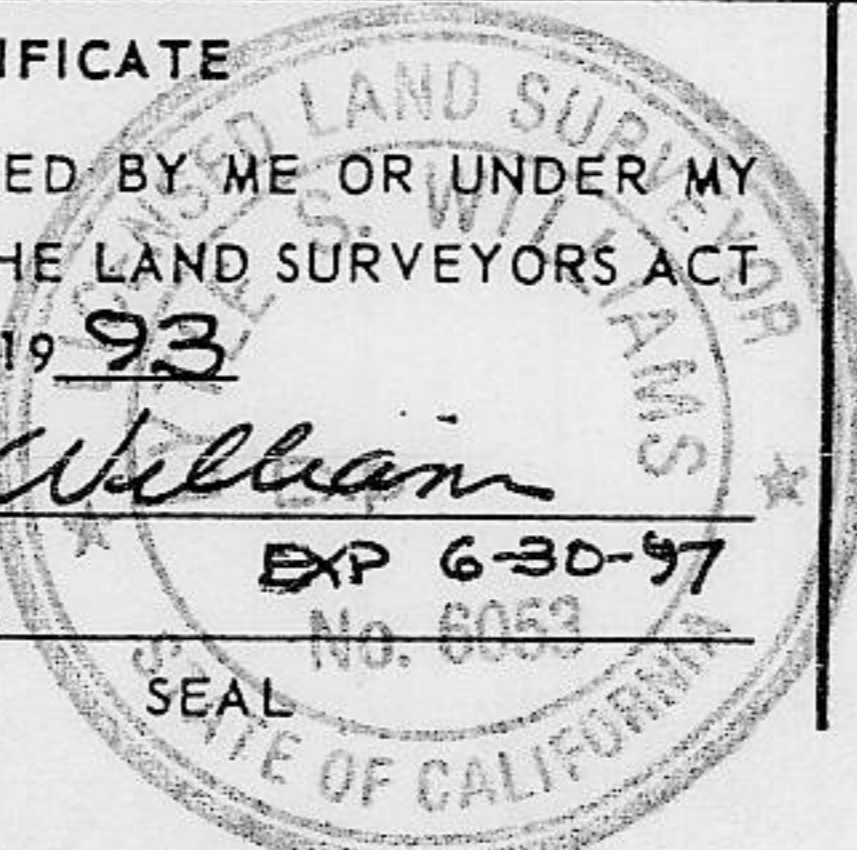


SURVEYOR'S CERTIFICATE

THIS CORNER RECORD WAS PREPARED BY ME OR UNDER MY DIRECTION IN CONFORMANCE WITH THE LAND SURVEYORS ACT ON NOVEMBER 7 1993

SIGNED: Lyle J. Williams

L.S. or R.C.E. No.: LS 6053



COUNTY SURVEYOR'S CERTIFICATE

THIS CORNER RECORD WAS RECEIVED Jul 4 1994 AND EXAMINED AND FILED Jul 12 1994

BY: Cheryl Rogers

TITLE: Deputy County Surveyor

DOCUMENT No. _____

STATEMENT ON BACK OF SHEET

YES NO

BOOK 4 CORNER RECORDS PAGE 10