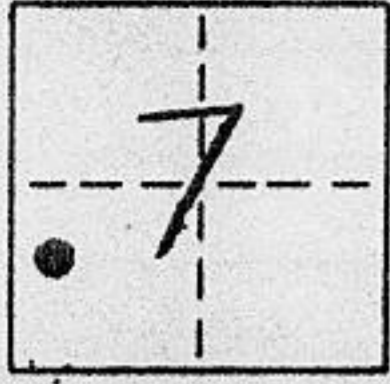


**CORNER RECORD**

COUNTY OF PLACER T. 14N R. 17E MDB MERIDIAN CALIFORNIA

CORNER TYPE: GOV'T. CORNER  MEANDER  RANCHO  CONTROL  OTHER   
 CORNER IDENTIFICATION - DATE OF VISIT  APRIL 19 94

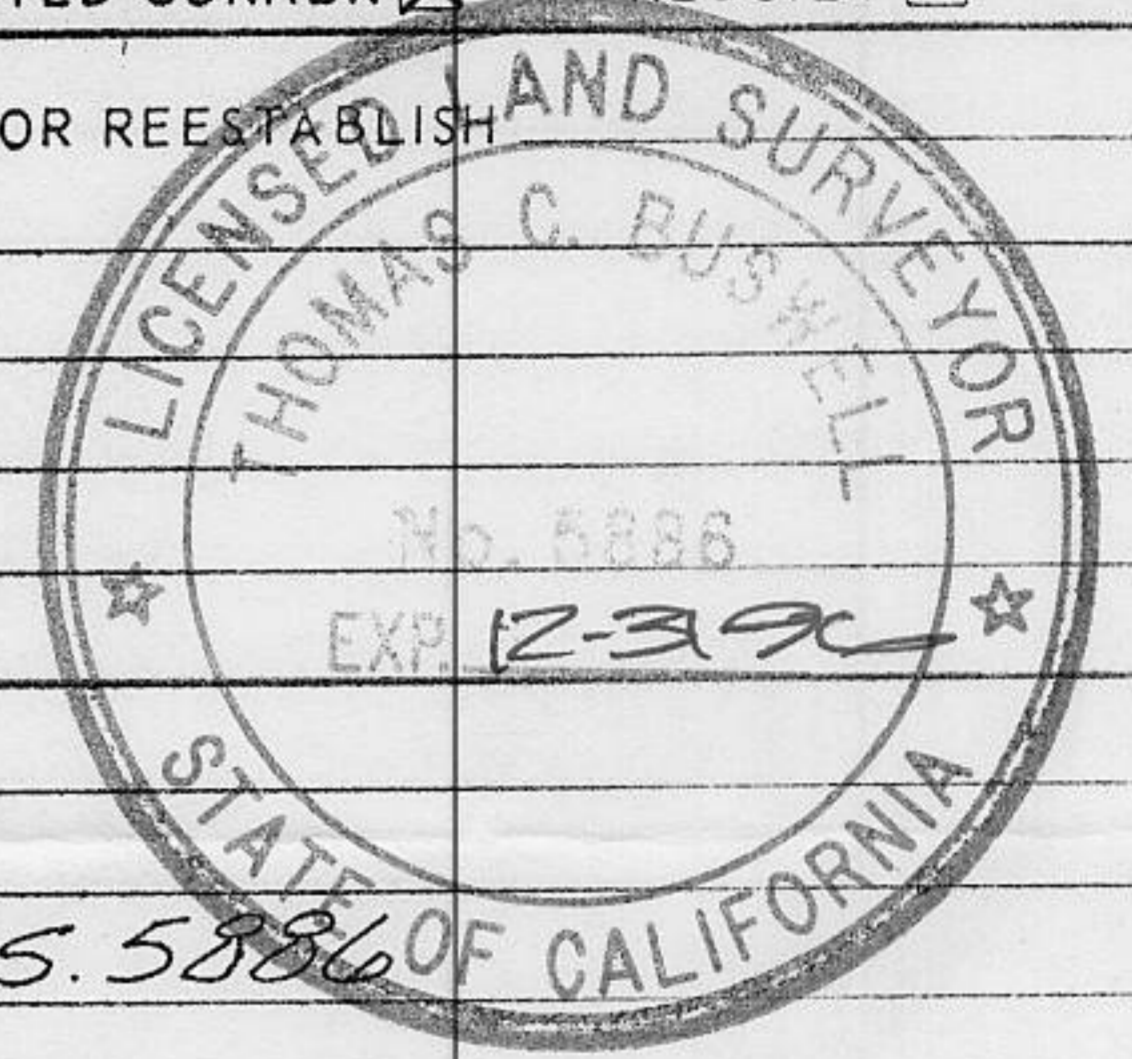


LOT 158, CHAMBERLANDS UNIT "D," BOOK "G" MAPS PAGE 36

CORNER - LEFT AS FOUND  FOUND AND TAGGED  REESTABLISHED OBLITERATED CORNER  REBUILT

PHYSICAL DESCRIPTION OF CORNER FOUND: EVIDENCE AND METHOD USED TO IDENTIFY OR REESTABLISH

● FOUND 1/2" φ REBAR AS PER "G" MAPS 36



PHYSICAL DESCRIPTION OF MONUMENTS REBUILT OR PERPETUATED

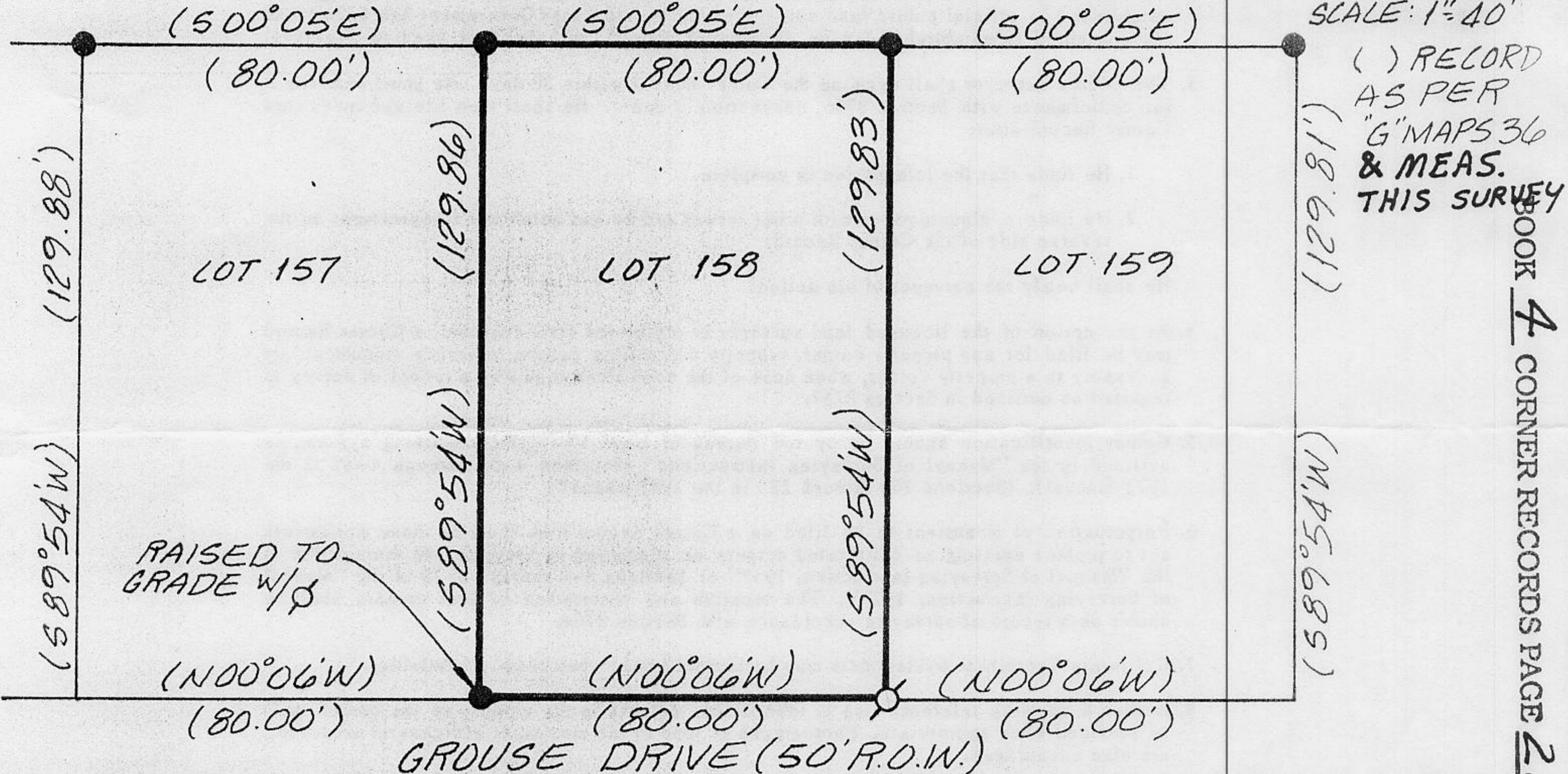
○ SET 5/8" φ REBAR w/ 1/2" φ METAL CAP, STAMPED L.S. 5886 OF CALIFORNIA  
TAHOE BASIN LAND SURVEYING

CALIFORNIA COORDINATE SYSTEM ORDER: FIRST  SECOND  THIRD  N/A

STATIONS USED: NGS (USC & GS)  STATE  COUNTY  OTHER  STATION \_\_\_\_\_ STATION \_\_\_\_\_

ZONE \_\_\_\_\_ ELEVATION \_\_\_\_\_ NORTHINGS (Y) \_\_\_\_\_ EASTINGS (X) \_\_\_\_\_

TAHOE WOODLANDS "D" MAPS 40



**SURVEYOR'S CERTIFICATE**

THIS CORNER RECORD WAS PREPARED BY ME OR UNDER MY DIRECTION IN CONFORMANCE WITH THE LAND SURVEYORS ACT ON APRIL 27 19 94

SIGNED: \_\_\_\_\_

L.S. or R.C.E. No.: L.S. 5886

SEAL

**COUNTY SURVEYOR'S CERTIFICATE**

THIS CORNER RECORD WAS RECEIVED MAY 2 19 94 AND EXAMINED AND FILED MAY 5 19 94

BY: \_\_\_\_\_

TITLE: DEPUTY COUNTY SURVEYOR

DOCUMENT No. \_\_\_\_\_

STATEMENT ON BACK OF SHEET

YES  NO