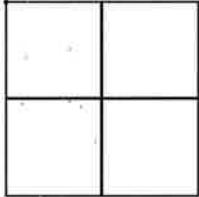


CORNER RECORD

Agency Index BK 24 Pg 20
Document Number 20210034
County of PLACER COUNTY, California

City of UNINCORPORATED

Brief Legal Description BEING LOT 1 OF "BB" MAPS 81, OFFICIAL RECORDS OF PLACER COUNTY.



CORNER TYPE

Government Corner Control
Meander Property
Rancho Other

COORDINATES (Optional)

N. _____ E. _____
Elevation _____
Units Metric U.S. Survey Foot
Horizontal Datum _____
Zone _____ Epoch Date _____
Vertical Datum _____

SEC 29 T17N R13E

Date of Survey MAY 18, 2021

Complies with Public Resources Code §§8801-8819
 Complies with Public Resources Code §§8890-8902

PLS Act Ref: 8765(d) 8771 8773 Other:
Corner/Monument: Left as found Established Rebuilt Pre-Construction
 Found and tagged Reestablished Referenced Post-Construction

Narrative of corner identified and monument as found, set, reset, replaced, or removed:

See sheet #2 for description(s):

FOUND AND/OR SET MONUMENTS IN RECORD LOCATION PER "BB" Maps 81.
(SEE SHEET 2).

SURVEYOR'S STATEMENT

This Corner Record was prepared by me or under my direction in conformance with

the Professional Land Surveyors' Act on OCTOBER 12, 2021

Signed [Signature] P.L.S. or R.C.E. No. 6148

COUNTY SURVEYOR'S STATEMENT

This Corner Record was received OCTOBER 25, 2021

and examined and filed OCTOBER 25, 2021

Signed [Signature] P.L.S. or R.C.E. No. 8373

Title Deputy Co. Surveyor

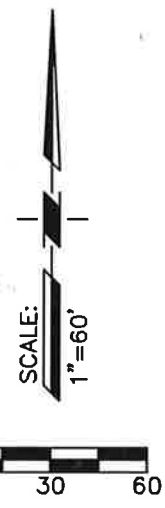
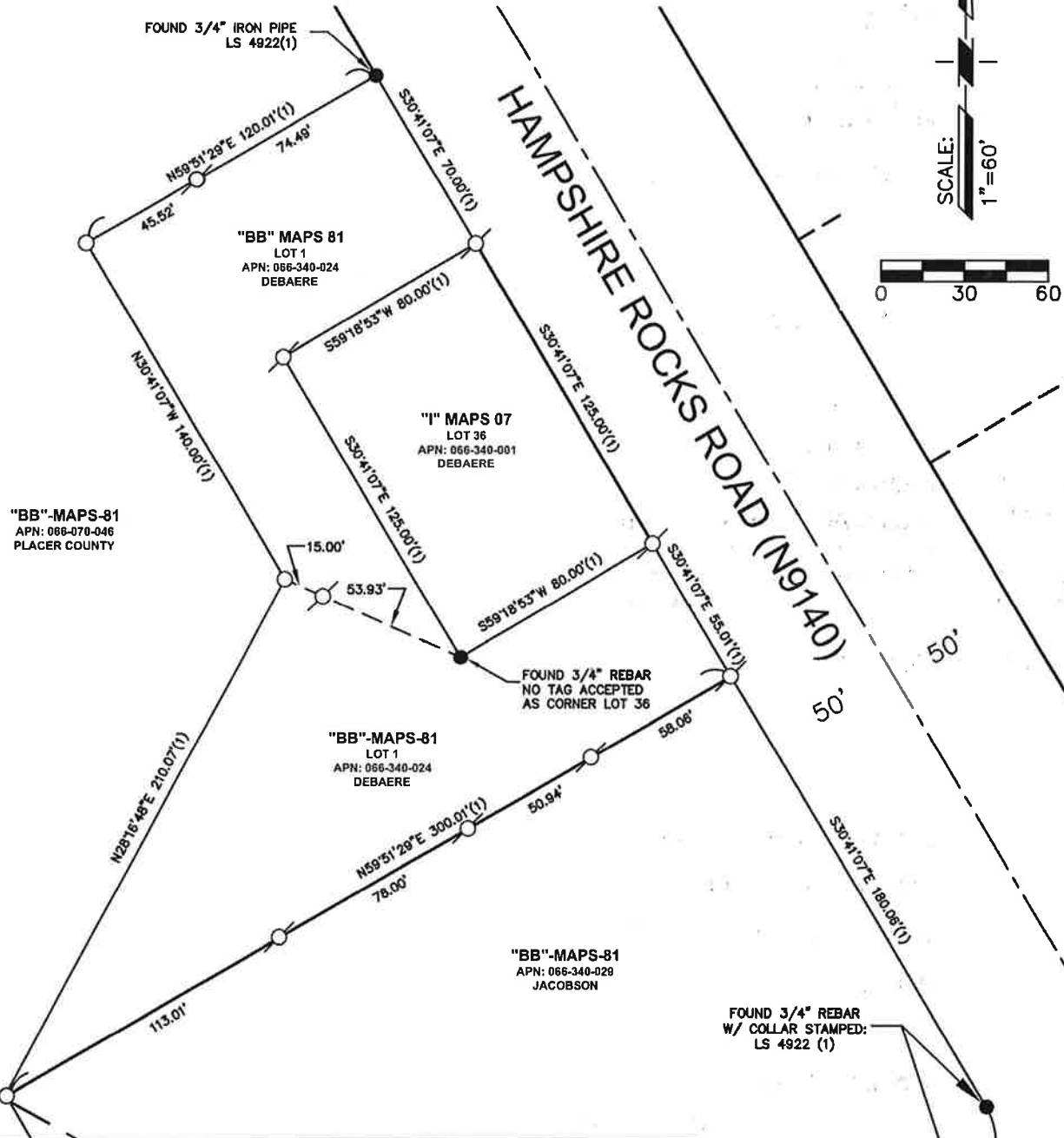
County Surveyor's Comment _____



BOOK 24 OF CORNER RECORDS PAGE 20

REFERENCES

(1) = RECORD PER BOOK "BB" MAPS AT PAGE 81 PLACER COUNTY RECORDS



BOOK 24 OF OPENER RECORDS PAGE 20

MONUMENT NOTES

- FOUND MONUMENT AS NOTED.
- ⊕ SET 1/2" REBAR WITH PLASTIC CAP. STAMPED LS6148
- DIMENSION POINT, NOTHING FOUND OR SET.

BASIS OF BEARINGS: RECORD PER BB MOR 81

THE PURPOSE OF THIS CORNER RECORD IS TO DOCUMENT THE PERPETUATION OF FOUND AND SET MONUMENT(S) PURSUANT TO THE PLS ACT SECTION 8771.