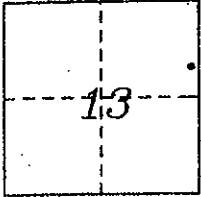


CORNER RECORD

COUNTY OF PLACER, CALIFORNIA

City of \_\_\_\_\_ Document Number \_\_\_\_\_

Brief Legal Description LOT 29, TAHOE WOODS UNIT 1, BOOK "I" MAPS, PAGE 30



T.14N., R.16E. CORNER TYPE  
M.D.B. & M.

COORDINATES  
(Optional)

Government Corner  Control  N. \_\_\_\_\_  
Meander  Property  E. \_\_\_\_\_  
Rancho  Other  Zone \_\_\_\_\_ Datum \_\_\_\_\_  
Date of Survey October 2004 Elev. \_\_\_\_\_

Corner- Left as found  Found and tagged  Established  Reestablished  Rebuilt

Identification and type of corner found; Evidence used to identify or procedure used to establish or reestablish corner:

• ~ fd. monument as indicated

A description of the physical condition of the monument as found and as set or reset:

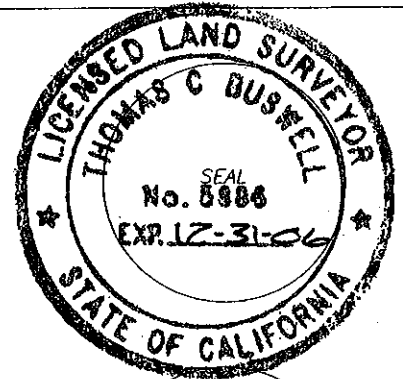
Ø ~ set 5/8" rebar with 2" aluminum cap  
stamped "TAHOE BASIN LAND SURVEYING,  
THOMAS C. BUSWELL, LS 5886".

SURVEYOR'S STATEMENT

This Corner Record was prepared by me or under my direction in conformance with the Land

Surveyor's Act on DECEMBER 2005

Signed [Signature] L.S. or R.C.E. Number 5886  
Thomas C. Buswell, PLS



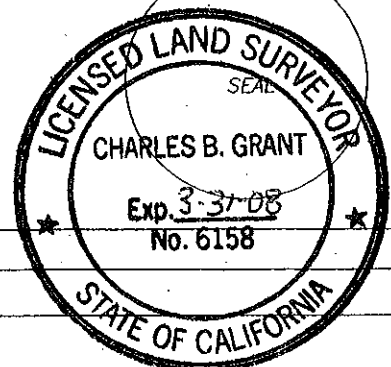
COUNTY SURVEYOR'S STATEMENT

This Corner Record was Received 08-14 2007 and Examined

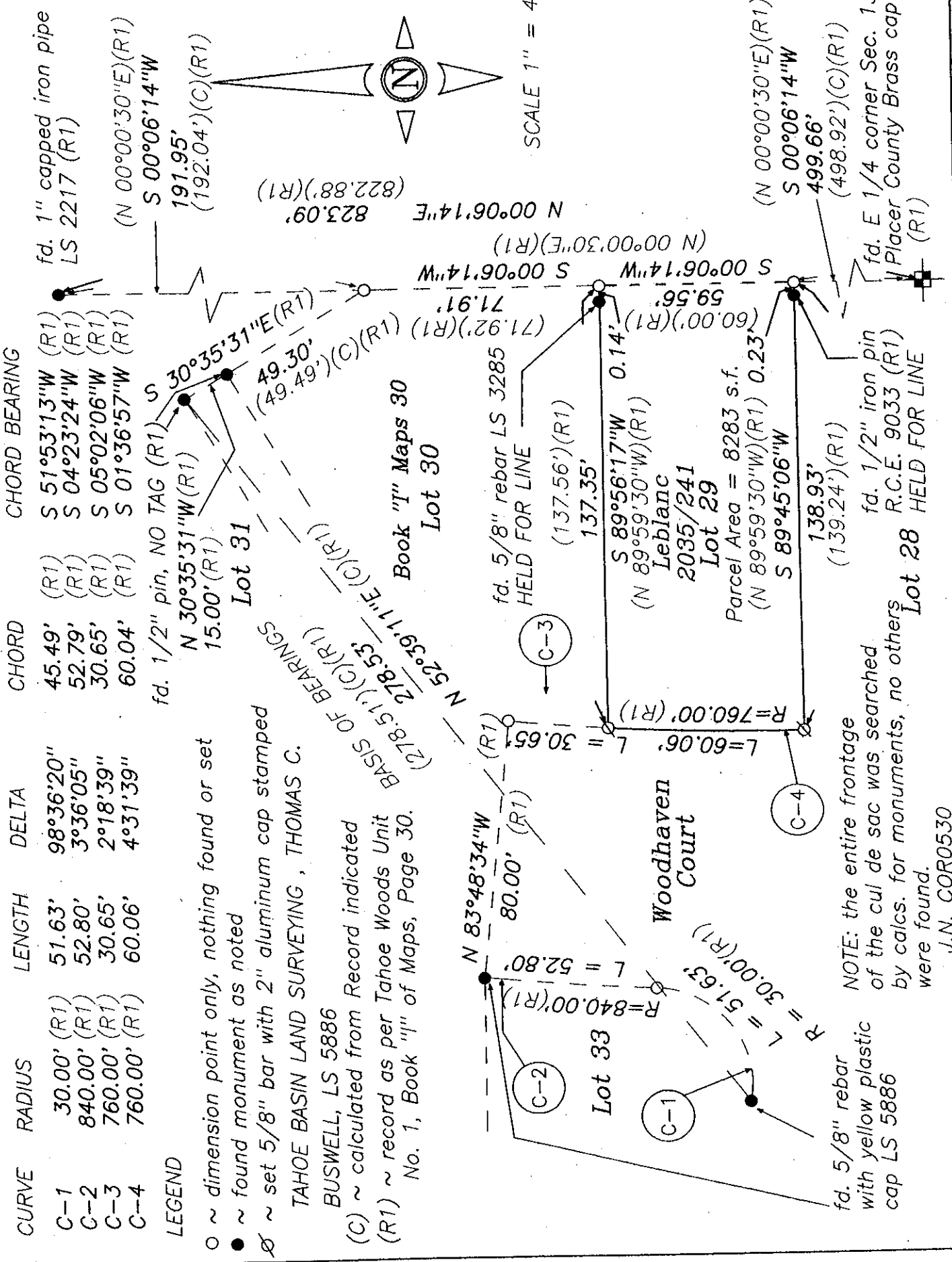
and filed SEPT 1 2007

Signed [Signature] Title DEPUTY COUNTY SURVEYOR  
LS 6158

County Surveyor's Comment \_\_\_\_\_



BOOK 10 CORNER RECORDS PAGE 82



CURVE	RADIUS	LENGTH	DELTA	CHORD	CHORD BEARING
C-1	30.00' (R1)	51.63'	98°36'20"	45.49' (R1)	S 51°53'13"W (R1)
C-2	840.00' (R1)	52.80'	3°36'05"	52.79' (R1)	S 04°23'24"W (R1)
C-3	760.00' (R1)	30.65'	2°18'39"	30.65' (R1)	S 05°02'06"W (R1)
C-4	760.00' (R1)	60.06'	4°31'39"	60.04' (R1)	S 01°36'57"W (R1)

LEGEND

- o ~ dimension point only, nothing found or set
  - ~ found monument as noted
  - ∅ ~ set 5/8" bar with 2" aluminum cap stamped
- TAHOE BASIN LAND SURVEYING, THOMAS C.  
 BUSWELL, LS 5886  
 (C) ~ calculated from Record indicated  
 (R1) ~ record as per Tahoe Woods Unit  
 No. 1, Book "I" of Maps, Page 30.

NOTE: the entire frontage of the cul de sac was searched by calcs. for monuments, no others were found.

Parcel Area = 8283 s.f.  
 (N 89°59'30"W)(R1) 0.23'  
 S 89°45'06"W

fd. 5/8" rebar with yellow plastic cap LS 5886

fd. 1/2" iron pin R.C.E. 9033 (R1)

fd. E 1/4 corner Sec. 13 Placer County Brass cap (R1)

Lot 28 HELD FOR LINE

Lot 29

Lot 30

Lot 31

Lot 33

Woodhaven Court

SCALE 1" = 40'