

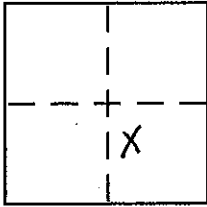
CORNER RECORD

Document Number _____

City of _____

County of PLACER, California

Brief Legal Description LOT 39, TRACT No. 222, NORTHSTAR UNIT 1-A SUB. J/MARS/38, O.R.P.C.



SEC. 32
T. 17 N.
R. 17 E.
M.D.B.M.

CORNER TYPE

Government Corner Control
Meander Property
Rancho Other
Date of Survey 11-6-2006

COORDINATES (Optional)

N. _____
E. _____
Zone _____ NAD27 NAD83
NAD83 Epoch _____
Elev. _____
Vert. Datum: NGVD29 NAVD88
Meas. Units: Metric Imperial

Corner - Left as found Found and tagged Established Reestablished Rebuilt

Identification and type of corner found: Evidence used to identify or procedure used to establish or reestablish the corner:

USED THE RECORD DIMENSIONS AND THE FOUND ORIGINAL MONUMENTS PER J/MARS/38, O.R.P.C., TO REESTABLISH THE MISSING CORNER OF LOT 39, AS SHOWN ON THE ACCOMPANYING PLAT.

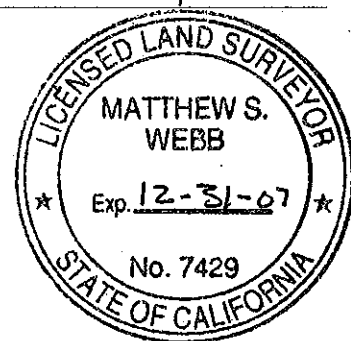
A description of the physical condition of the monument as found and as set or reset:

SET 5/8" REBAR WITH YELLOW PLASTIC CAP MARKED LS 7429.

SURVEYOR'S STATEMENT

This Corner Record was prepared by me or under my direction in conformance with the Land Surveyor's Act on November 9 2006

Signed [Signature] P.L.S. or R.C.E. No. 7429



COUNTY SURVEYOR'S STATEMENT

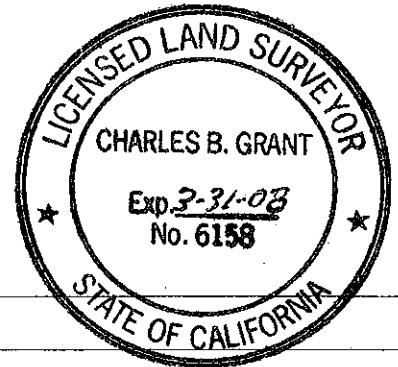
This Corner Record was received 09-19-07

and examined and filed OCT. 18 2007

Signed [Signature] P.L.S. or R.C.E. No. 6158

Title DEPUTY COUNTY SURVEYOR

County Surveyor's Comment _____

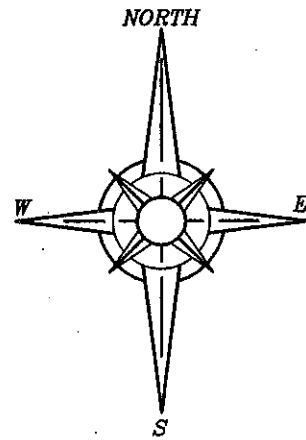


BOOK 10 CURRNET RELURUD PAGE 90

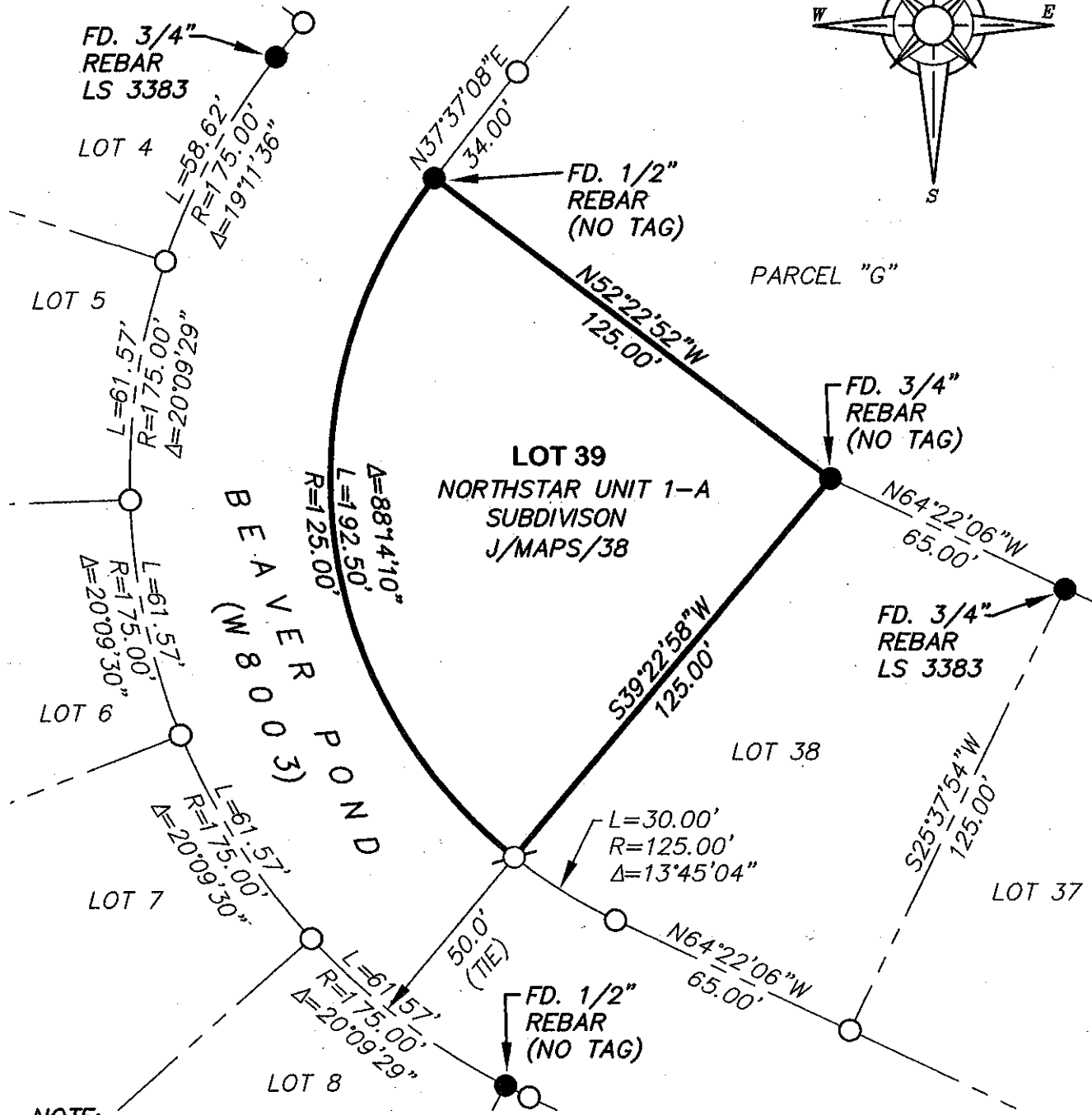
PLAT OF SURVEY

LOT 39, TRACT NO. 222, NORTHSTAR UNIT 1-A
 SUBDIVISION, BOOK J OF MAPS AT PAGE 38, OFFICIAL
 RECORDS PLACER COUNTY, CALIFORNIA. A PORTION OF
 SECTION 32, TOWNSHIP 17 N., RANGE 17 E., M.D.B. & M.

SCALE 1" = 40' DATE OF SURVEY 11/6/2006



BOOK 10 CORNER RECORDS PAGE 90



NOTE:

ALL BEARINGS AND DISTANCES SHOWN HEREON ARE RECORD
 PER J/MAPS/38, O.R.P.C.

- FOUND MONUMENT AS SHOWN HEREON
- ⊗ SET 5/8" REBAR WITH YELLOW PLASTIC CAP L.S. 7429
- DIMENSION PT (NOTHING FOUND OR SET)

J/N 1387.00