

Placer County Redistricting

Draft Map Alternative Hybrid 2.0 (two options)

November 23rd, 2021

A collaboration by Amber Beckler, Julia Sweeney, Lisa Larkin and Wayne Nader with feedback incorporated from community groups and leaders across Placer County

Key Highlights of Hybrid 2.0

➤ Baseline Requirements Met

- Meets all state and federal requirements
- Achieves population parity of 5% or less deviation (Hybrid 2.0 = 4.52% and Hybrid 2.0 Option 2 is 2.26%)
- Adheres to County driven criteria to the extent possible

➤ Collaborative approach to create the “4th map” recommended by the Commission to the Board of Supervisors

- Integrates elements of Maps A, C2 and Hybrid
- Takes a regional focus representing the diverse mix of rural/ag and suburban/city along with planned growth in the next 10 years and recognizes specific plans
- Aligns Communities of Interest, preserves distinct neighborhoods and follows census designated areas, preserves cities
- Balances districts with incorporated and unincorporated
- More compact districts and eliminates carve-outs and minimizes peninsulas

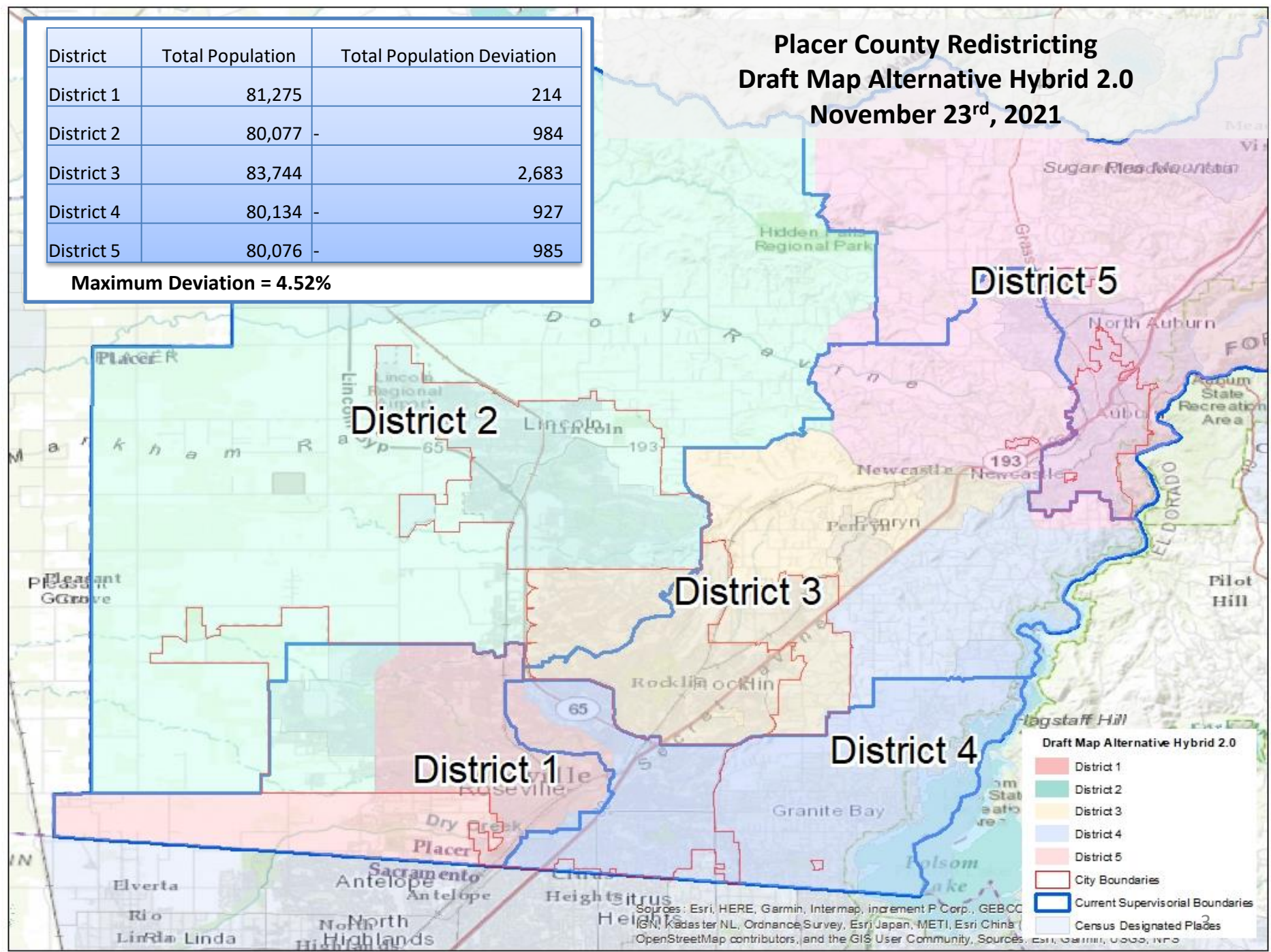
➤ Integrated feedback from community leaders across the County

- Keeps Lincoln, Rocklin, Loomis whole
- Preserves Roseville across 3 districts (Option 2 splits into 4 in order to align Loomis Basin with Granite Bay)
- Aligns Loomis with Newcastle and Penryn and kept together (Option 2 brings all together with Granite Bay)
- Preserves West Roseville Community of Interest
- Each district has unincorporated and incorporated population and preserves strong rural/ag presence
- Sunset Area Plan is contained in one district
- District supervisor span of responsibility is balanced across cities, rural areas and specific plans

Placer County Redistricting Draft Map Alternative Hybrid 2.0 November 23rd, 2021

District	Total Population	Total Population Deviation
District 1	81,275	214
District 2	80,077	984
District 3	83,744	2,683
District 4	80,134	927
District 5	80,076	985

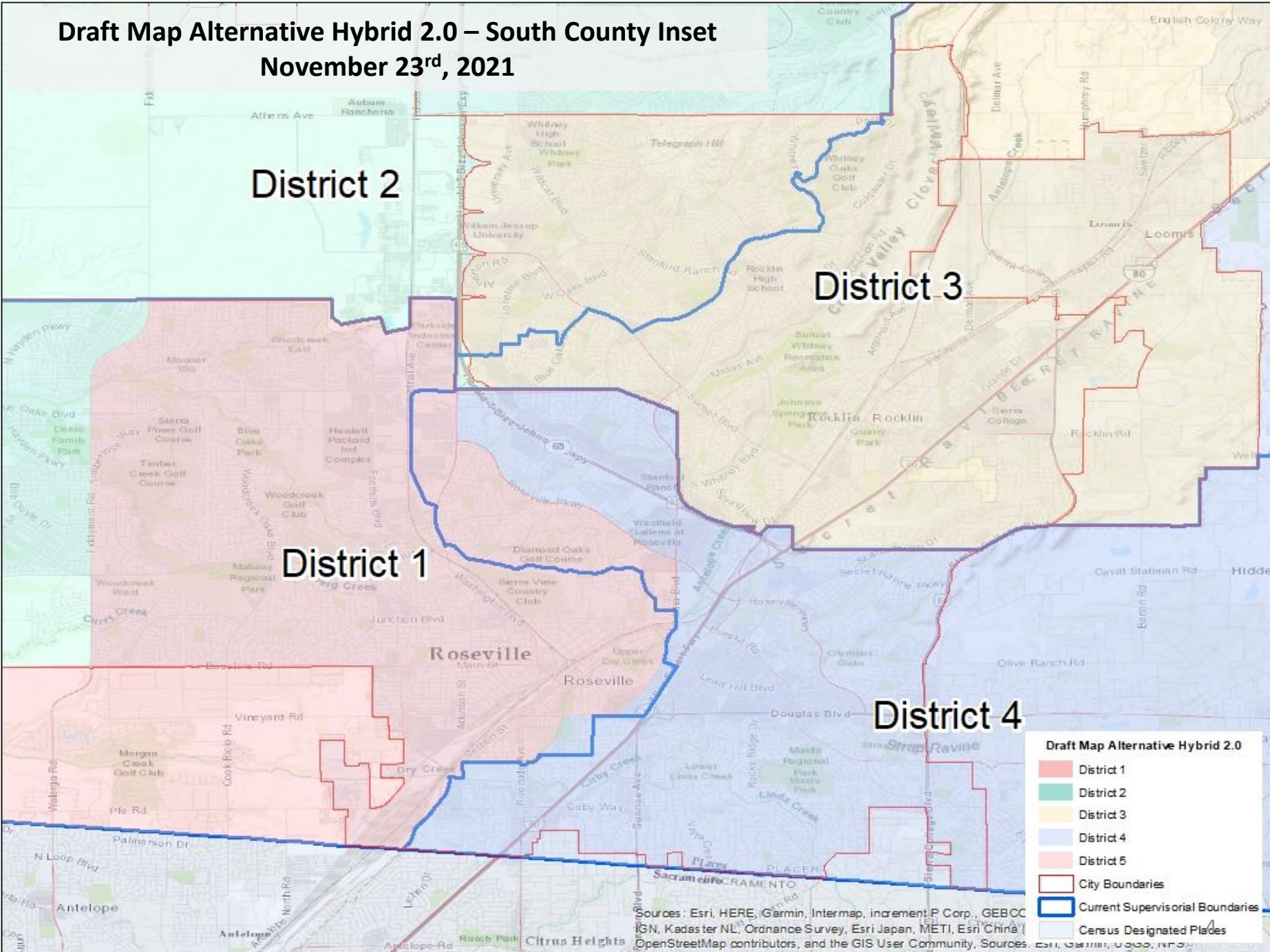
Maximum Deviation = 4.52%



- Draft Map Alternative Hybrid 2.0**
- District 1
 - District 2
 - District 3
 - District 4
 - District 5
 - City Boundaries
 - Current Supervisorial Boundaries
 - Census Designated Places

Sources: Esri, HERE, Garmin, Intermap, increment P Corp., GEBCO, IGN, Kadaster NL, Ordnance Survey, Esri Japan, METI, Esri China (OpenStreetMap contributors), and the GIS User Community, Sources: Esri, Garmin, GEBCO, NOAA

Draft Map Alternative Hybrid 2.0 – South County Inset
November 23rd, 2021



District 2

District 3

District 1

District 4

Draft Map Alternative Hybrid 2.0

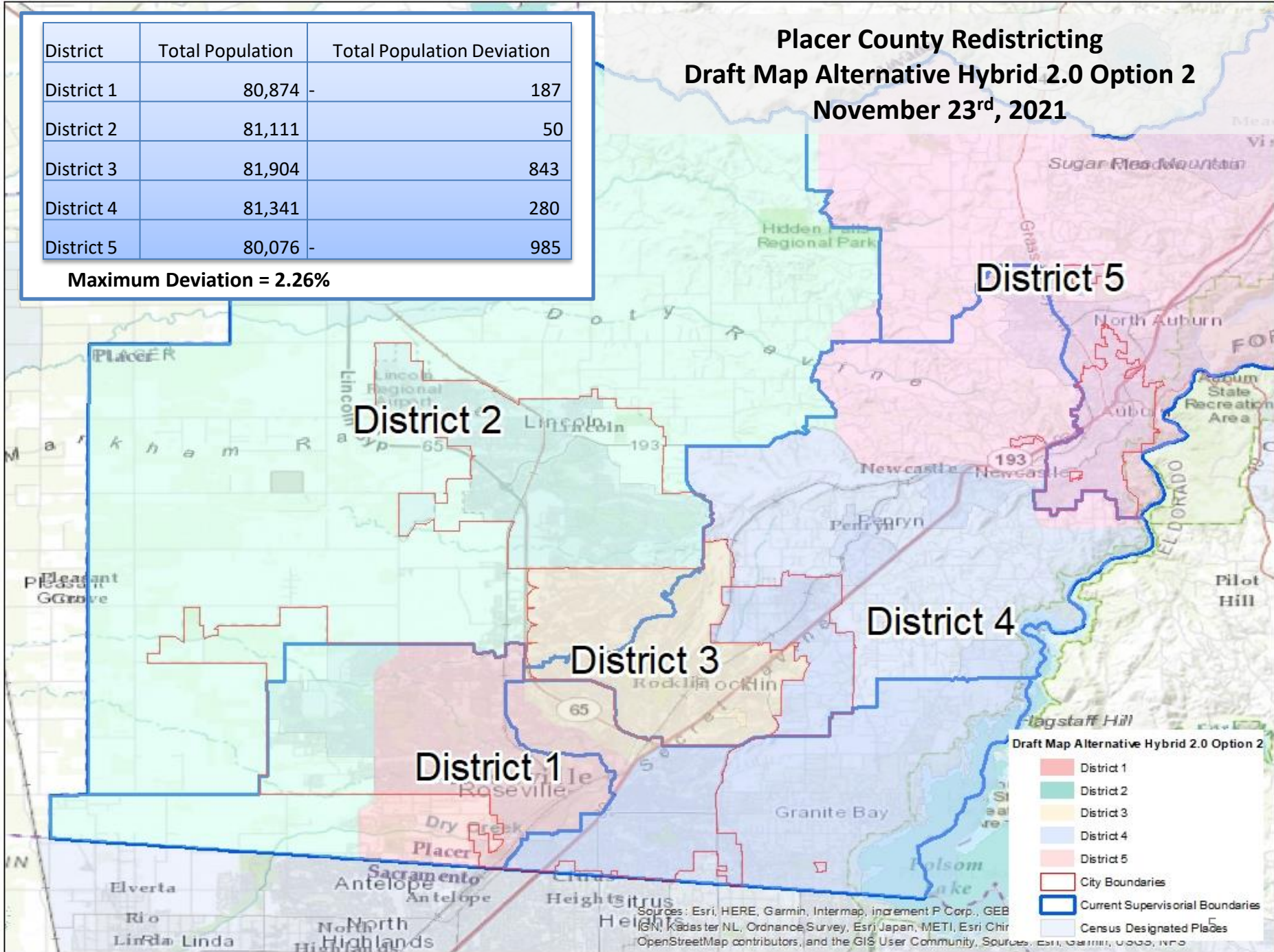
- District 1
- District 2
- District 3
- District 4
- District 5
- City Boundaries
- Current Supervisorial Boundaries
- Census Designated Places

Sources: Esri, HERE, Garmin, Intermap, increment P Corp., GEBCO, IGN, Kadaster NL, Ordnance Survey, Esri Japan, METI, Esri China (OpenStreetMap contributors), and the GIS User Community, Sources: Esri, Garmin, NOAA, NPS

Placer County Redistricting Draft Map Alternative Hybrid 2.0 Option 2 November 23rd, 2021

District	Total Population	Total Population Deviation
District 1	80,874	-187
District 2	81,111	50
District 3	81,904	843
District 4	81,341	280
District 5	80,076	-985

Maximum Deviation = 2.26%



- Draft Map Alternative Hybrid 2.0 Option 2
- District 1
 - District 2
 - District 3
 - District 4
 - District 5
 - City Boundaries
 - Current Supervisorial Boundaries
 - Census Designated Places

Sources: Esri, HERE, Garmin, Intermap, increment P Corp., GEBCO, IGN, Kadaster NL, Ordnance Survey, Esri Japan, METI, Esri China, OpenStreetMap contributors, and the GIS User Community, Sources: Esri, Garmin, GEBCO, NOAA

Draft Map Alternative Hybrid 2.0 Option 2 – South County Inset

November 23rd, 2021

District 2

District 3

District 1

District 4

Roseville

Roseville

Draft Map Alternative Hybrid 2.0 Option 2

- District 1
- District 2
- District 3
- District 4
- District 5
- City Boundaries
- Current Supervisorial Boundaries
- Census Designated Places

Sources: Esri, HERE, Garmin, Intermap, increment P Corp., GEBCO, IGN, Kadaster NL, Ordnance Survey, Esri Japan, METI, Esri China (Beijing) Co., Swisstopo, Mapbox, OpenStreetMap contributors, and the GIS User Community. Sources: Esri, HERE, Garmin, Intermap, increment P Corp., GEBCO, IGN, Kadaster NL, Ordnance Survey, Esri Japan, METI, Esri China (Beijing) Co., Swisstopo, Mapbox, OpenStreetMap contributors, and the GIS User Community.