

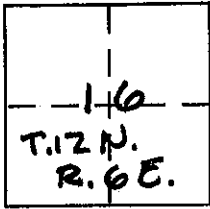
**CORNER RECORD**

Document Number \_\_\_\_\_

City of LINCOLN

County of PLACER, California

Brief Legal Description REFERENCE CORNERS, LOT 90/91 BK "X" PG. 10



**CORNER TYPE**

Government Corner  Control   
 Meander  Property   
 Rancho  Other   
 Date of Survey 9-18-06

**COORDINATES (Optional)**

N. \_\_\_\_\_  
 E. \_\_\_\_\_  
 Zone \_\_\_\_\_ NAD27  NAD83   
 NAD83 Epoch \_\_\_\_\_  
 Elev. \_\_\_\_\_  
 Vert. Datum: NGVD29  NAVD88   
 Meas. Units: Metric  Imperial

Corner - Left as found  Found and tagged  Established  Reestablished  Rebuilt

Identification and type of corner found: Evidence used to identify or procedure used to establish or reestablish the corner:

RESET REFERENCE CORNERS TO PROPERTY CORNERS, 1 FOOT INTO THE RIGHT OF WAY, ORIGINAL CORNER WAS DESTROYED W/SIDEWALK REMOVAL

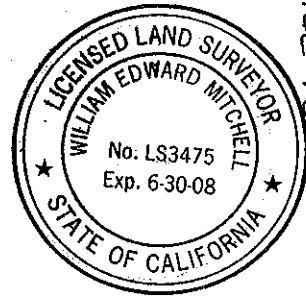
A description of the physical condition of the monument as found and as set or reset:

MISSING CORNER WAS RESET WITH PK NAIL AND LS TAG #3475 FLUSH INTO SIDEWALK WITH EPOXY PER CITY OF LINCOLN STANDARD DRAWING "H-26"

**SURVEYOR'S STATEMENT**

This Corner Record was prepared by me or under my direction in conformance with the Land Surveyor's Act on 9-18-06

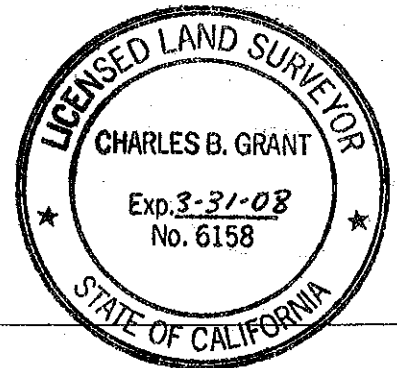
Signed William E. Mitchell P.L.S or R.C.E. No. LS 3475



**COUNTY SURVEYOR'S STATEMENT**

This Corner Record was received 10-15-07 and examined and filed OCT. 18 2007

Signed Charles B. Grant P.L.S or R.C.E. No. 6158  
 Title DEPUTY COUNTY SURVEYOR

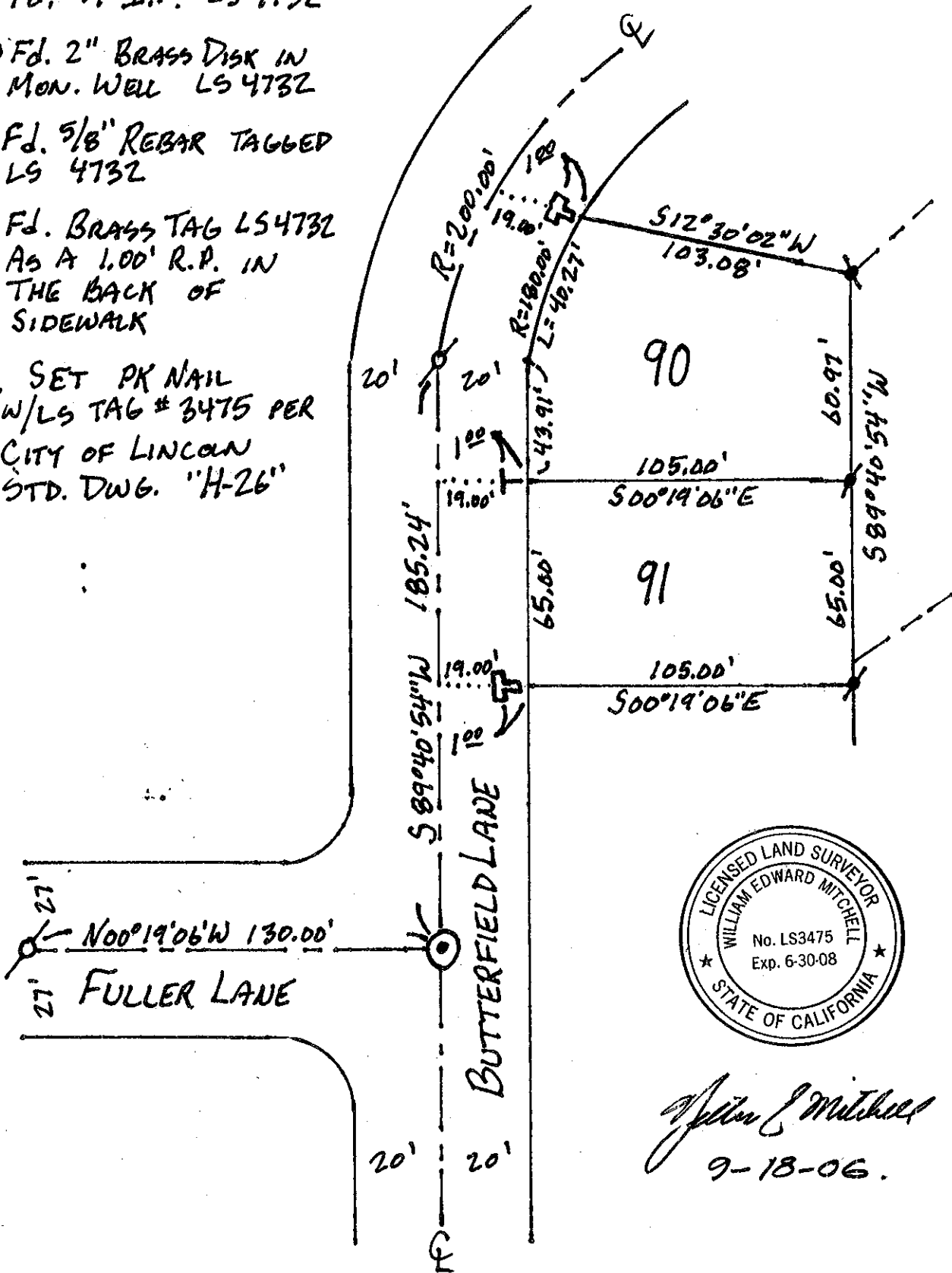
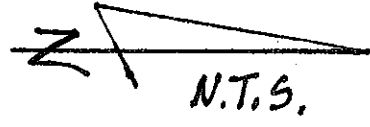


County Surveyor's Comment \_\_\_\_\_

BOOK 10 CORNER RECORDS PAGE 93

LEGEND:

- ⌀ Fd. 3/4" I.P. LS 4732
- ⊙ Fd. 2" BRASS DISK IN MON. WELL LS 4732
- ⌀ Fd. 5/8" REBAR TAGGED LS 4732
- ▣ Fd. BRASS TAG LS 4732 AS A 1.00' R.P. IN THE BACK OF SIDEWALK
- ⊥ SET PK NAIL W/LS TAG # 3475 PER CITY OF LINCOLN STD. DWG. "H-26"



*William E. Mitchell*  
9-18-06.