

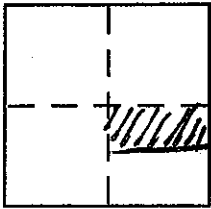
CORNER RECORD

Document Number _____

City of LINCOLN

County of PLACER, California

Brief Legal Description REFERENCE CORNERS, LOT 76/77, 80/81, 81/12 BK "W" PG 10



S.17
T.12N
R.6E

CORNER TYPE

- Government Corner Control
- Meander Property
- Rancho Other
- Date of Survey JUNE 2006

COORDINATES (Optional)

N. _____
 E. _____
 Zone _____ NAD27 NAD83
 NAD83 Epoch _____
 Elev. _____
 Vert. Datum: NGVD29 NAVD88
 Meas. Units: Metric Imperial

Corner **S** Left as found Found and tagged Established Reestablished Rebuilt

Identification and type of corner found: Evidence used to identify or procedure used to establish or reestablish the corner:
RE SET REFERENCE CORNERS TO PROPERTY CORNERS, 1 FOOT INTO THE RIGHT OF WAY, ORIGINAL CORNERS WERE DESTROYED W/ SIDEWALK REMOVAL

A description of the physical condition of the monument as found and as set or reset:
MISSING REFERENCE CORNERS WERE RE SET WITH PR NAIL AND LS TAG # 3475 FLUSH INTO SIDEWALK WITH EPOXY PER CITY OF LINCOLN STANDARD DRAWING "H-26"

SURVEYOR'S STATEMENT

This Corner Record was prepared by me or under my direction in conformance with the Land Surveyor's Act on July 2006

Signed William Edward Mitchell P.L.S or R.C.E. No. LS 3475



COUNTY SURVEYOR'S STATEMENT

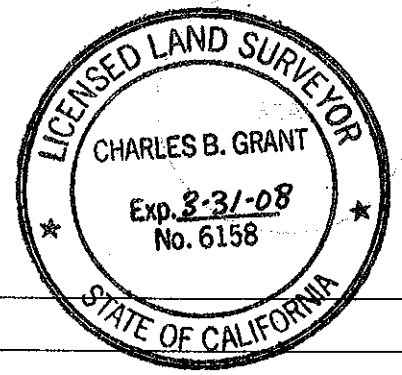
This Corner Record was received 10-11-07

and examined and filed OCT. 18 2007

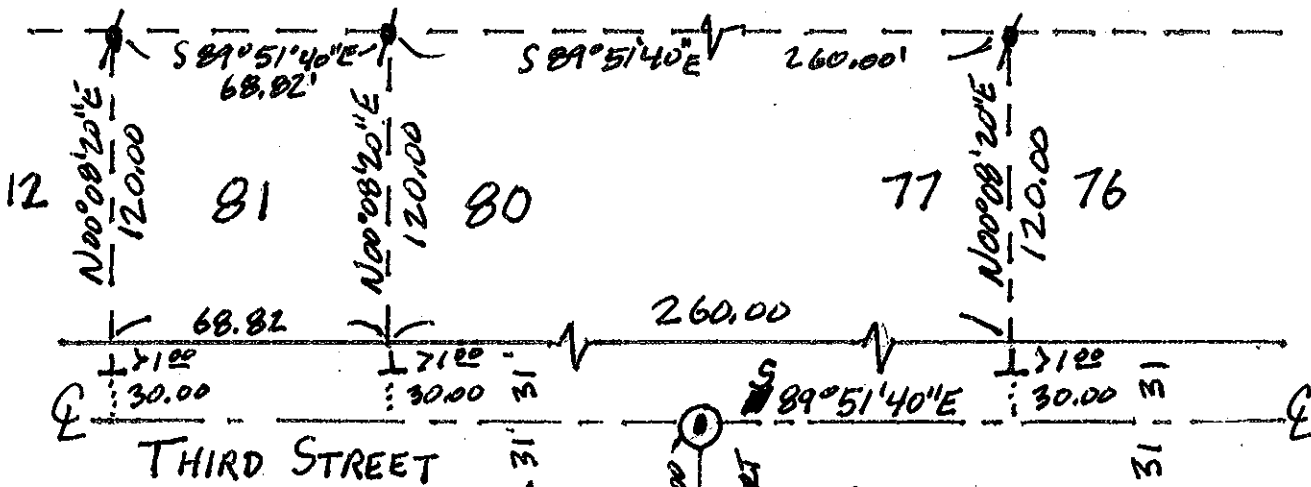
Signed Charles B. Grant P.L.S or R.C.E. No. 6158

Title DEPUTY COUNTY SURVEYOR

County Surveyor's Comment _____

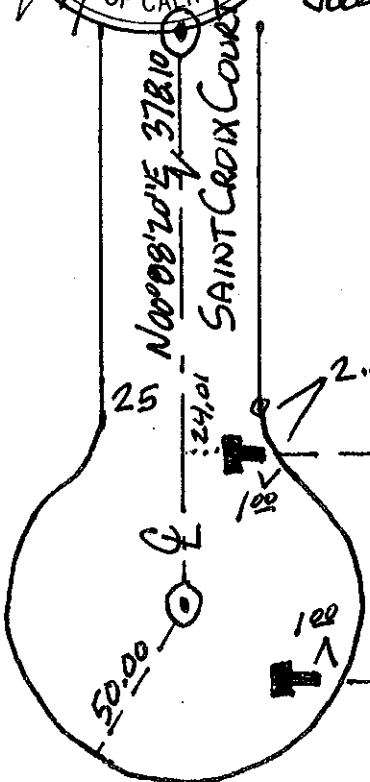


BOOK 10 CORNER RECORDS PAGE 97



July 2006

SAINT THOMAS COURT
N 00° 08' 20" E 297.00



- ⦿ Fd. 3/4" RB LS 6584
- ⊙ Fd. 3/4" RB LS 6584
- ⊥ SET PR NAIL W/
LS TAG # 3475
PER COL STD DWG
"H-26"
- ⊥ Fd. BRASS TAG
W/LS TAG # 6584

