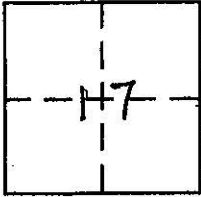


CORNER RECORD

COUNTY OF PLACER, CALIFORNIA

City of _____ Document Number _____

Brief Legal Description LOT 25, STERLING POINTE ESTATES, BK.T OF MAPS, PAGE 93



T. 11 N.
R. 8 E.

CORNER TYPE

- Government Corner
- Meander
- Rancho
- Date of Survey 12/05/05
- Control
- Property
- Other

COORDINATES (Optional)

N. _____
 E. _____
 Zone _____ Datum _____
 Elev. _____

Corner — Left as found Found and tagged Established Reestablished Rebuilt

Identification and type of corner found: Evidence used to identify or procedure used to establish or reestablish corner:

FROM MONUMENTS SHOWN AS FOUND AND RECORD DATA PER BOOK T OF MAPS, PAGE 93, WERE USED TO ESTABLISH THE LOCATION OF CORNER SHOWN AS SET.

A description of the physical condition of the monument as found and as set or reset:

- ⊙ FOUND 2" BRASS DISK IN MONUMENT WELL STAMPED L.S. 3475
- FOUND 3/4" IRON PIPE AND TAG L.S. 3475
- ⊠ FOUND X CUT IN ROCK
- ⊕ SET 3/4" REBAR & PLASTIC CAP STAMPED L.S. 5123
- DIMENSION POINT

SURVEYOR'S STATEMENT

This Corner Record was prepared by me or under my direction in conformance with the Land

Surveyors' Act on DECEMBER 20 2005.

Signed St. A. Gardner (L.S.) or R.C.E. Number 5123

EXPIRATION DATE: 06/30/07

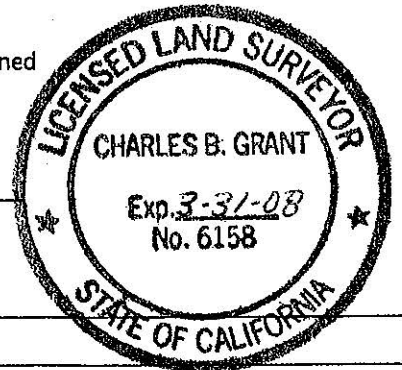
COUNTY SURVEYOR'S STATEMENT

This Corner Record was received _____ 20 _____ and examined

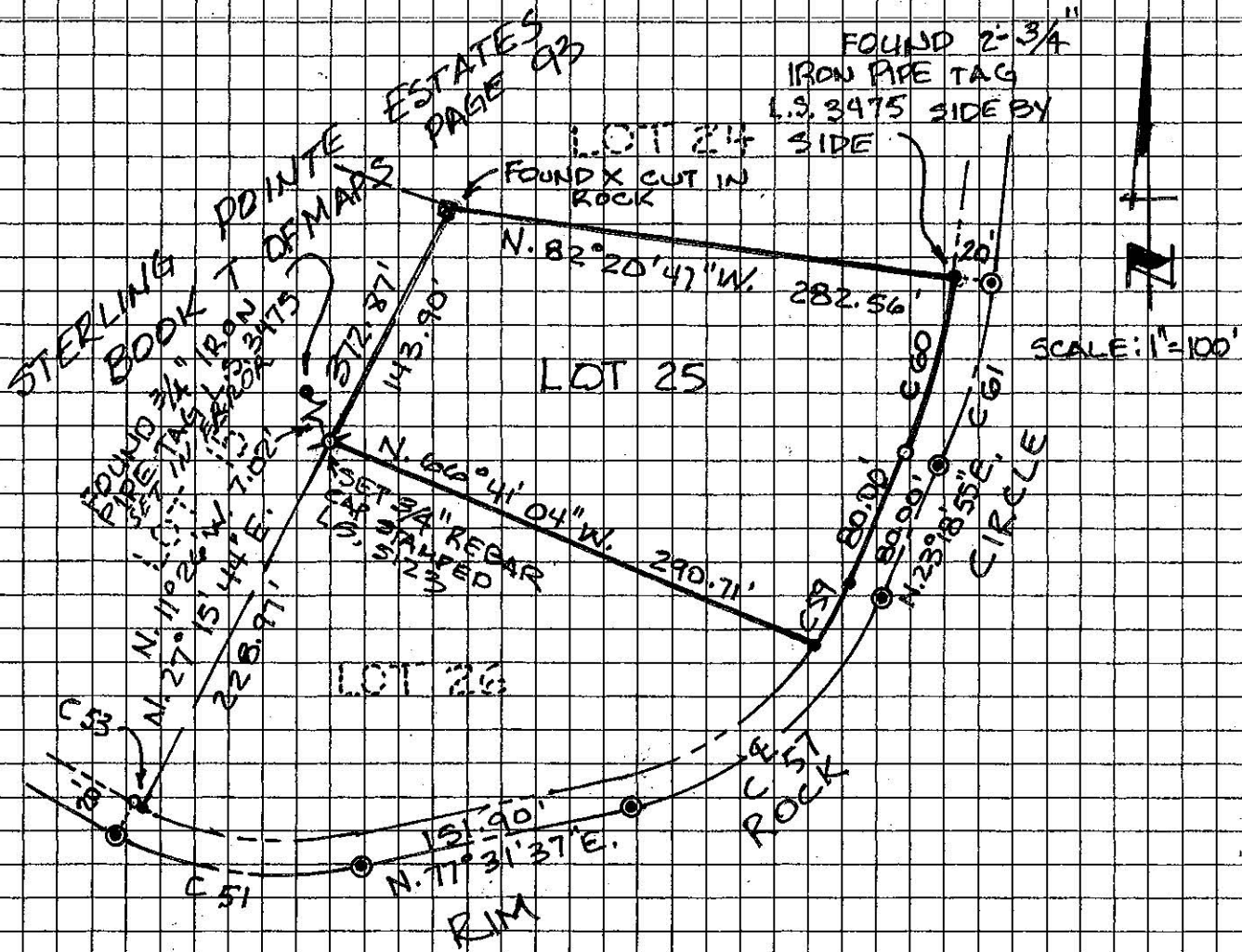
and filed APRIL 10 2006.

Signed Charles B. Grant Title DEPUTY COUNTY SURVEYOR
LS 6158

County Surveyor's Comment _____



BOOK 10 CORNER RECORDS PAGE 54



CURVE TABLES

CURVE	RADIUS	LENGTH	CHORD	DELTA
C 60	380.00'	100.78'	100.48'	N.15°43'06"E 15°11'41"
C 61	400.00'	106.08'	105.77'	N.15°43'06"E 15°11'41"
C 57	200.00'	139.23'	132.25'	N.50°25'16"E 54°12'42"
C 51	200.00'	138.70'	135.94'	N.82°36'19"W 39°44'07"
C 53	180.00'	4.60'	4.60'	N.63°28'10"W 01°27'47"
C 59	180.00'	40.58'	40.49'	N.29°46'25"E 12°55'02"