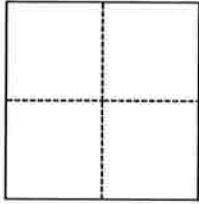


CORNER RECORD

Agency Index

BK 24 PG 32Document Number 20210099City of UNICORPORATED AREA County of PLACER, CaliforniaBrief Legal Description LOT 7, FF MAPS 15 POR SEC 4, T11N, R6E MDM**CORNER TYPE****COORDINATES (Optional)**

- Government Corner Control
 Meander Property
 Rancho Other

N. _____ E. _____

Elevation _____

Units Metric U.S. Survey Foot

Horizontal Datum _____

Zone _____ Epoch Date _____

Vertical Datum _____

 Complies with Public Resources Code §§8801-8819 Complies with Public Resources Code §§8890-8902Date of Survey October 15, 2021

SEC 4, T 11 N, R 6 E, MDM

PLS Act Ref.: 8765(d) 8771 8773 Other:Corner/Monument: Left as found Established Rebuilt Pre-Construction Found and tagged Reestablished Referenced Post-Construction

Narrative of corner identified and monument as found, set, reset, replaced, or removed:

 See sheet #2 for description(s):

NORTHERLY AND SOUTHERLY FOUND IRON PIPES OF LINE DESIGNATED AS N 00-01-15 E, 833.70 ON FF MAPS 15 WILL BE REMOVED BY CONSTRUCTION ACTIVITIES. THE NORTHERLY CORNER WILL FALL IN SIDEWALK. THE SOUTHERLY CORNER WILL FALL IN ASPHALT. CORNERS WILL BE RESET AS NOTED UPON COMPLETION OF CONSTRUCTION AND A POST CONSTRUCTION CORNER RECORD WILL BE FILED AS EVIDENCE.

SURVEYOR'S STATEMENT

This Corner Record was prepared by me or under my direction in conformance with

the Professional Land Surveyors' Act on November 15, 2021Signed [Signature] P.L.S. or R.C.E. No. 4922**COUNTY SURVEYOR'S STATEMENT**This Corner Record was received NOVEMBER 24, 2021and examined and filed NOVEMBER 24, 2021Signed [Signature] P.L.S. or R.C.E. No. 8373Title Deputy County Surveyor

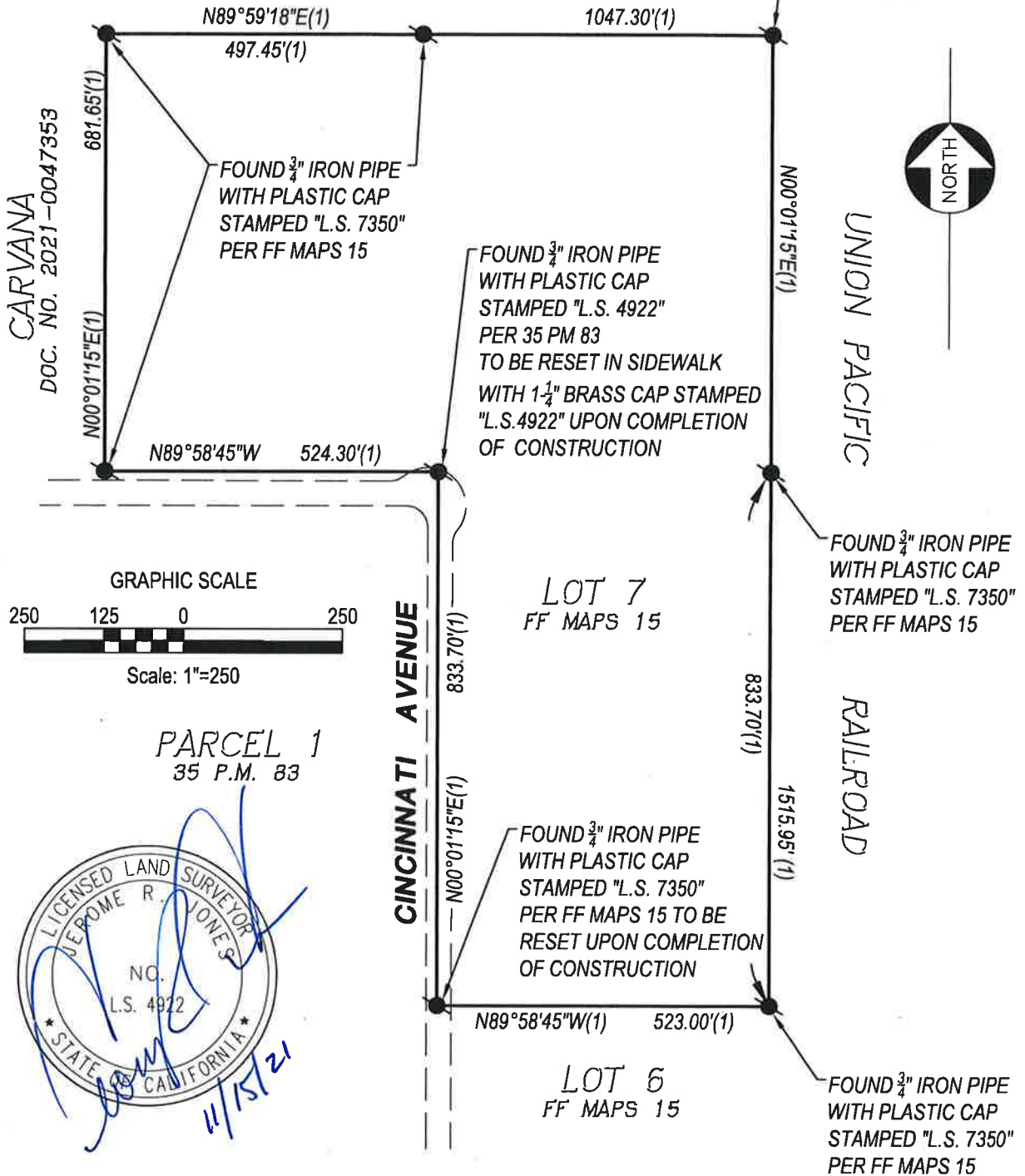
County Surveyor's Comment



Book 24 of Corner Records Page 32

AUBURN INDIAN COMMUNITY
DOC. NO. 2014-0009397

CARVANA
DOC. NO. 2021-0047353



Book 24 of Corner Records Page 32

LEGEND

(1)..... RECORD DATA PER FF MAPS 15



MORTON & PITALO, INC.
CIVIL ENGINEERING • LAND PLANNING • LAND SURVEYING
Folsom • Fresno
600 Coolidge Drive, Suite #140
Folsom, CA 95630
phone: (916) 984-7621
web: www.mpengr.com

**LOT 7 - FF MAPS 15
CORNER RECORD**
A PORTION OF SECTION 4,
T.11.N, R.6.E, MDB&M
PLACER COUNTY, CALIFORNIA
DECEMBER 2021