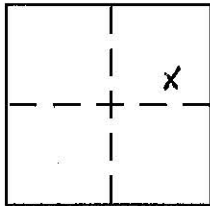


**CORNER RECORD**

Document Number \_\_\_\_\_

City of \_\_\_\_\_ County of PLACER, California

Brief Legal Description LOT 3, KINGSWOOD ESTATES UNIT NO. 2, I/MAPS/46, O.R.P.C.



SEC. 12  
T. 16 N.  
R. 17 E.  
M.D.B. 1/4 M.

**CORNER TYPE**

Government Corner  Control   
Meander  Property   
Rancho  Other   
Date of Survey 12-13-2005

**COORDINATES (Optional)**

N. \_\_\_\_\_  
E. \_\_\_\_\_  
Zone \_\_\_\_\_ NAD27  NAD83   
NAD83 Epoch \_\_\_\_\_  
Elev. \_\_\_\_\_  
Vert. Datum: NGVD29  NAVD88   
Meas. Units: Metric  Imperial

Corner - Left as found  Found and tagged  Established  Reestablished  Rebuilt

Identification and type of corner found: Evidence used to identify or procedure used to establish or reestablish the corner:

USED RECORD DIMENSIONS AND THE FOUND MONUMENTS PER I/MAPS/46, O.R.P.C., TO REESTABLISH THE MISSING CORNER OF LOT 3, AS SHOWN ON THE ACCOMPANYING PLAT.

A description of the physical condition of the monument as found and as set or reset:

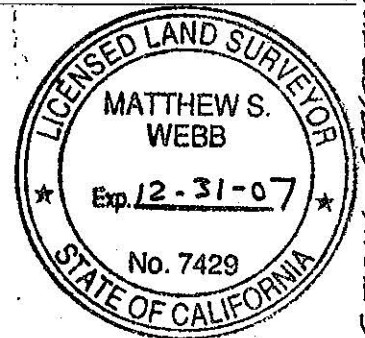
SET 5/8" REBAR WITH YELLOW PLASTIC CAP MARKED LS 7429

**SURVEYOR'S STATEMENT**

This Corner Record was prepared by me or under my direction in conformance with

the Land Surveyor's Act on March 24th 2006

Signed [Signature] P.L.S. or R.C.E. No. 7429



**COUNTY SURVEYOR'S STATEMENT**

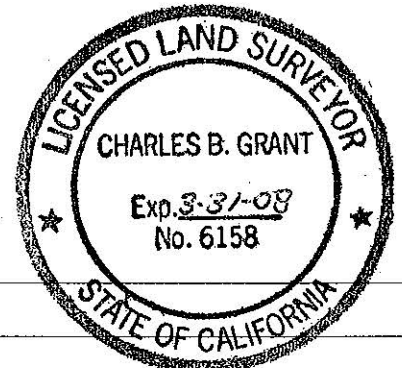
This Corner Record was received \_\_\_\_\_

and examined and filed APRIL 10 2006

Signed [Signature] P.L.S. or R.C.E. No. LS 6158

Title DEPUTY COUNTY SURVEYOR

County Surveyor's Comment \_\_\_\_\_

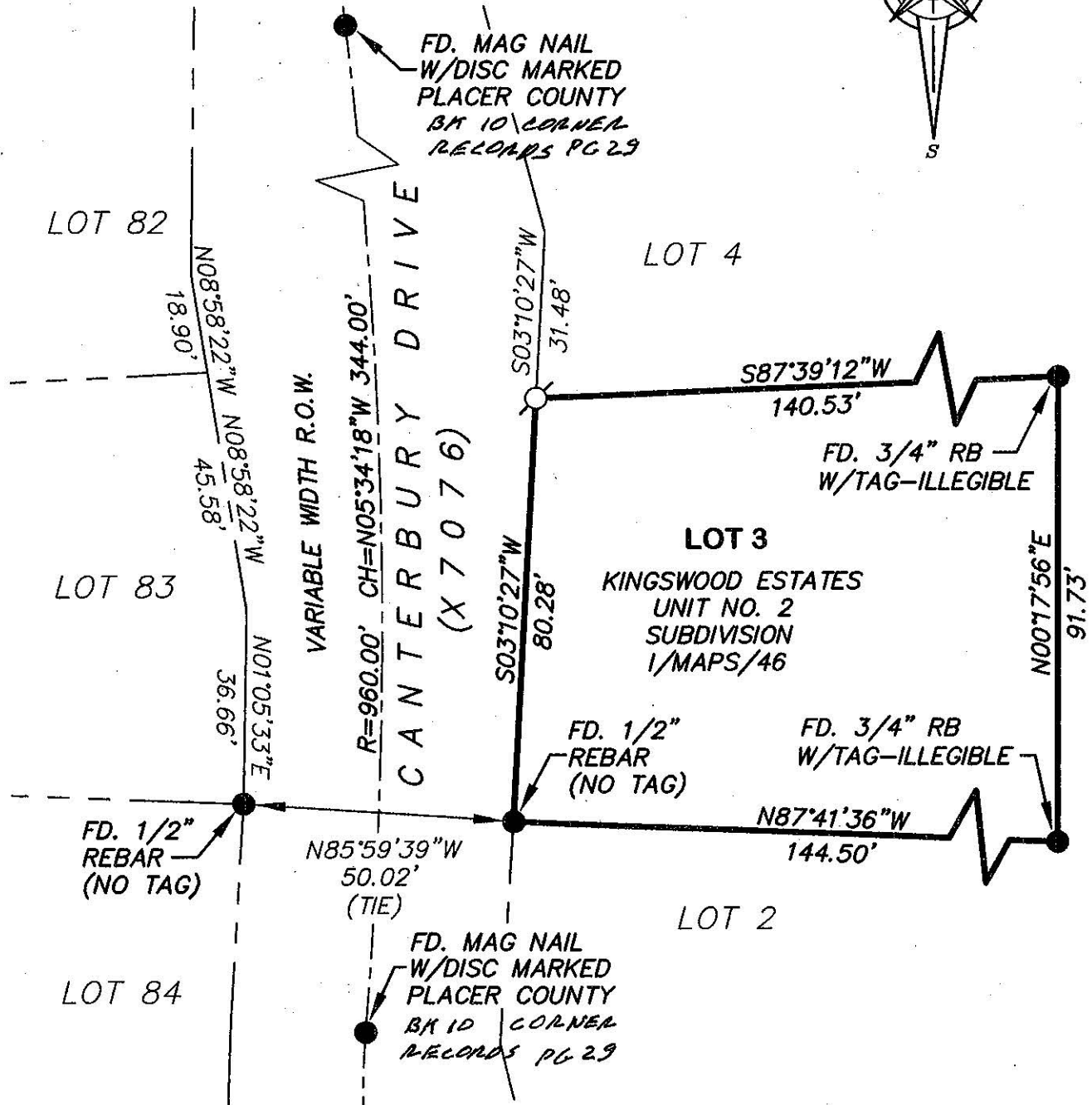
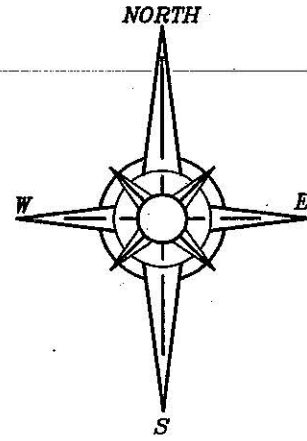


BOOK 10 CORNER RECORDS PAGE 58

**PLAT OF SURVEY**

LOT 3, KINGSWOOD ESTATES UNIT NO. 2  
 SUBDIVISION, BOOK 1, OF MAPS, AT PAGE 46,  
 OFFICIAL RECORDS PLACER COUNTY CALIFORNIA, A  
 PORTION OF THE N.E. 1/4 OF SECTION 12,  
 TOWNSHIP 16, N., RANGE 17, E., M.D.B. & M.

SCALE 1" = 30' DATE OF SURVEY 12/13/2005



**NOTE:**

ALL BEARINGS AND DISTANCES SHOWN HEREON ARE RECORD PER 1/MAPS/46, O.R.P.C.

- FOUND MONUMENT AS SHOWN HEREON
- SET 5/8" REBAR WITH YELLOW PLASTIC CAP L.S. 7429 J/N 1070.03

BOOK 10 FOR REG PAGE 58