

# CORNER RECORD

Agency Index BK 24 PG 33  
Document Number 20210068

City of \_\_\_\_\_ County of \_\_\_\_\_ Placer \_\_\_\_\_, California

Brief Legal Description Parcel 4, Book 26 Parcel Maps Page 5, ORPC

### CORNER TYPE

### COORDINATES (Optional)



- Government Corner
- Meander
- Rancho
- Control
- Property
- Other

N. \_\_\_\_\_ E. \_\_\_\_\_  
 Elevation \_\_\_\_\_  
 Units  Metric  U.S. Survey Foot  
 Horizontal Datum \_\_\_\_\_  
 Zone \_\_\_\_\_ Epoch Date \_\_\_\_\_

Date of Survey 8-16-2021

- Vertical Datum \_\_\_\_\_
- Complies with Public Resources Code §§8801-8819
  - Complies with Public Resources Code §§8890-8902

- PLS Act Ref.:  8765(d)  8771  8773  Other:
- Corner/Monument:  Left as found  Established  Rebuilt  Pre-Construction  
 Found and tagged  Reestablished  Referenced  Post-Construction

Narrative of corner identified and monument as found, set, reset, replaced, or removed:  
 See sheet #2 for description(s):

Holding field located monuments per Parcel Map filed in Book 26 at Page 5, Official Records of Placer County we replaced the missing monuments on the South line of Parcel 4 of 26 PM 5, Official Records of Placer County. See Exhibit 'B'

### SURVEYOR'S STATEMENT

This Corner Record was prepared by me or under my direction in conformance with the Professional Land Surveyors' Act on September 13, 2021

Signed Juanita Mathis P.L.S. or R.C.E. No. LS 8891



### COUNTY SURVEYOR'S STATEMENT

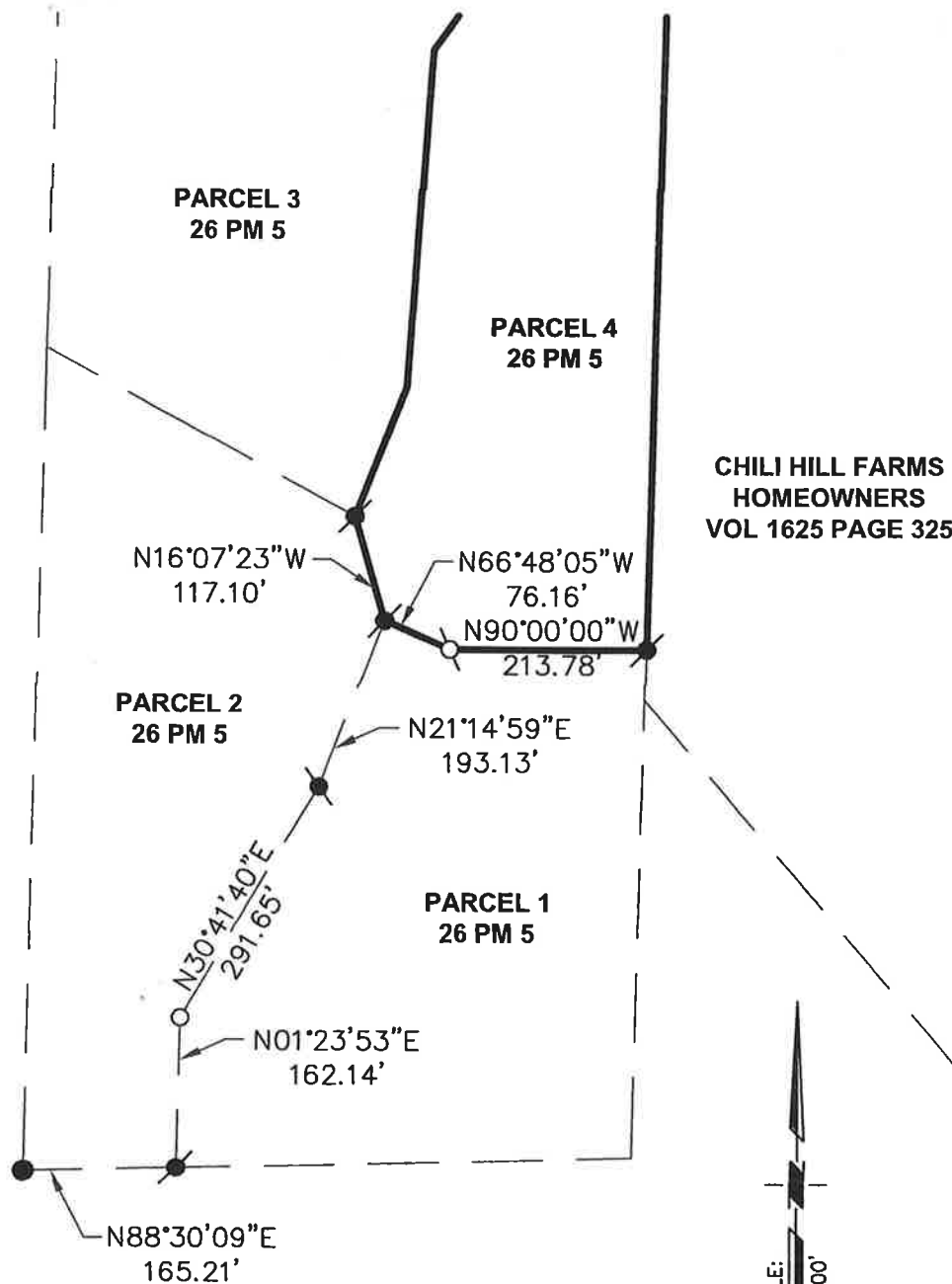
This Corner Record was received DECEMBER 3, 2021  
 and examined and filed DECEMBER 6, 2021

Signed Benjamin Boudreau P.L.S. or R.C.E. No. 8373  
 Title Deputy County Surveyor



County Surveyor's Comment

BOOK 24 OF CORNER RECORDS PAGE 33



**LEGEND**

- ..... SET 3/4" CAPPED REBAR STAMPED LS 8891
- ..... FND 3/4" REBAR STAMPED RCE 13845 PER 26PM5
- ..... FND 3/4" REBAR TAGGED LS 3636 PER 26PM5
- ..... DIMENSION POINT, NOTHING FOUND NOTHING SET

**NOTE**

ALL BEARINGS AND DISTANCES SHOWN HEREON ARE RECORD PER 26 PARCEL MAPS 5 OFFICIAL RECORDS OF PLACER COUNTY AND MEASURED.

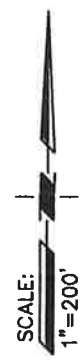
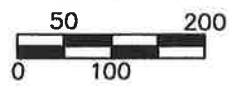


EXHIBIT 'B'  
 JANIGA  
 A PORTION OF  
 SECTION 11, T12N, R7E, MDM  
 NEWCASTLE, PLACER COUNTY, CALIFORNIA  
 SCALE: 1"=200' NOVEMBER, 2021

**MATHIS LAND SURVEYING**  
 COOL CALIFORNIA  
 916-768-8984