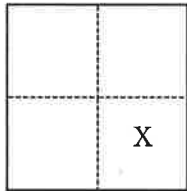


# CORNER RECORD

Agency Index BK 24 PG 34  
 Document Number 20210033

City of ROCKLIN County of PLACER, California  
 Brief Legal Description LOT 8 THROUGH LOT10 INCLUSIVE PER BOOK "Z" OF MAPS 90, PCR



- CORNER TYPE**
- Government Corner     Control  
 Meander                     Property  
 Rancho                         Other

**COORDINATES (Optional)**

N. \_\_\_\_\_ E. \_\_\_\_\_  
 Elevation \_\_\_\_\_  
 Units     Metric             U.S. Survey Foot  
 Horizontal Datum \_\_\_\_\_  
 Zone \_\_\_\_\_ Epoch Date \_\_\_\_\_  
 Vertical Datum \_\_\_\_\_  
 Complies with Public Resources Code §§8801-8819  
 Complies with Public Resources Code §§8890-8902

Date of Survey October 30, 2019

SE 1/4 Sec. 10, T 11 N, R 6 E, M. D. M.

- PLS Act Ref.:     8765(d)             8771             8773             Other:
- Corner/  
Monument:     Left as found             Established             Rebuilt             Pre-Construction  
 Found and tagged             Reestablished             Referenced             Post-Construction

Narrative of corner identified and monument as found, set, reset, replaced, or removed:  
 See sheet #2 for description(s):

Reestablished missing or obliterated monuments on Lots 8, 9, and 10, Z Maps 90 from existing monuments per said Z Maps 90 as shown on the accompanying plat.

## SURVEYOR'S STATEMENT

This Corner Record was prepared by me or under my direction in conformance with  
 the Professional Land Surveyors' Act on December 8, 2021  
 Signed [Signature] (P.L.S.) or R.C.E. No. 9010

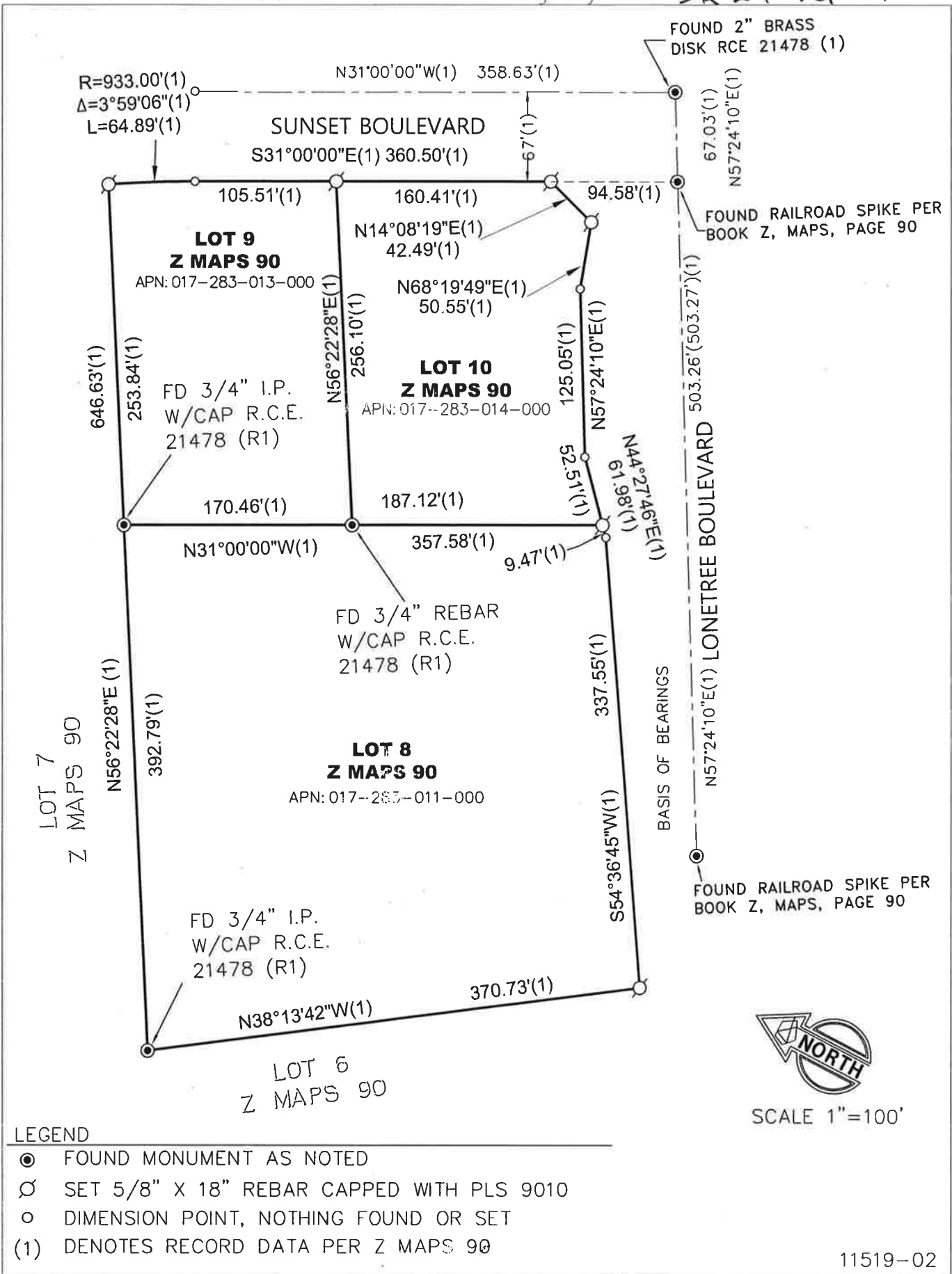


## COUNTY SURVEYOR'S STATEMENT

This Corner Record was received DECEMBER 13, 2021  
 and examined and filed DECEMBER 13, 2021  
 Signed [Signature] (P.L.S.) or R.C.E. No. 8373  
 Title Deputy County Surveyor  
 County Surveyor's Comment \_\_\_\_\_



BOOK 24 of CORNER RECORDS PAGE 34



BOOK 24 of CORNER RECORDS PAGE 34