

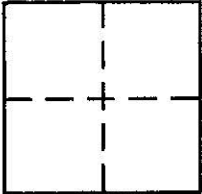
CORNER RECORD

COUNTY OF PLACER, CALIFORNIA

City of Auburn

Document Number _____

Brief Legal Description Lot 13 Rancho Manor No 2 Unit No 1 PER BK G MAPS, 35



S22
T.12N.
R.8E.

CORNER TYPE

- Government Corner
- Meander
- Rancho
- Date of Survey _____
- Control
- Property
- Other

COORDINATES (Optional)

N. _____
 E. _____
 Zone _____ Datum _____
 Elev. _____

Corner — Left as found Found and tagged Established Reestablished Rebuilt

Identification and type of corner found: Evidence used to identify or procedure used to establish or reestablish corner:

Re-establish southwest corner of Lot 13 using recovered evidence and record data from Book G, Maps Page 35.

A description of the physical condition of the monument as found and as set or reset: Set 1/2" rebar with ^{tag} L.S. 7579

SURVEYOR'S STATEMENT

This Corner Record was prepared by me or under my direction in conformance with the Land

Surveyors' Act on 16 MARCH 2006

Signed [Signature] L.S. or R.C.E. Number 7579

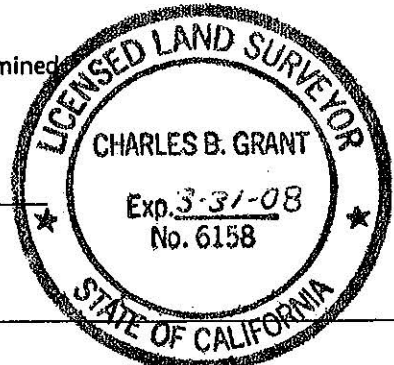


COUNTY SURVEYOR'S STATEMENT

This Corner Record was received _____ 20 _____ and examined

and filed APRIL 10 2006

Signed Charles B. Grant Title DEPUTY COUNTY SURVEYOR

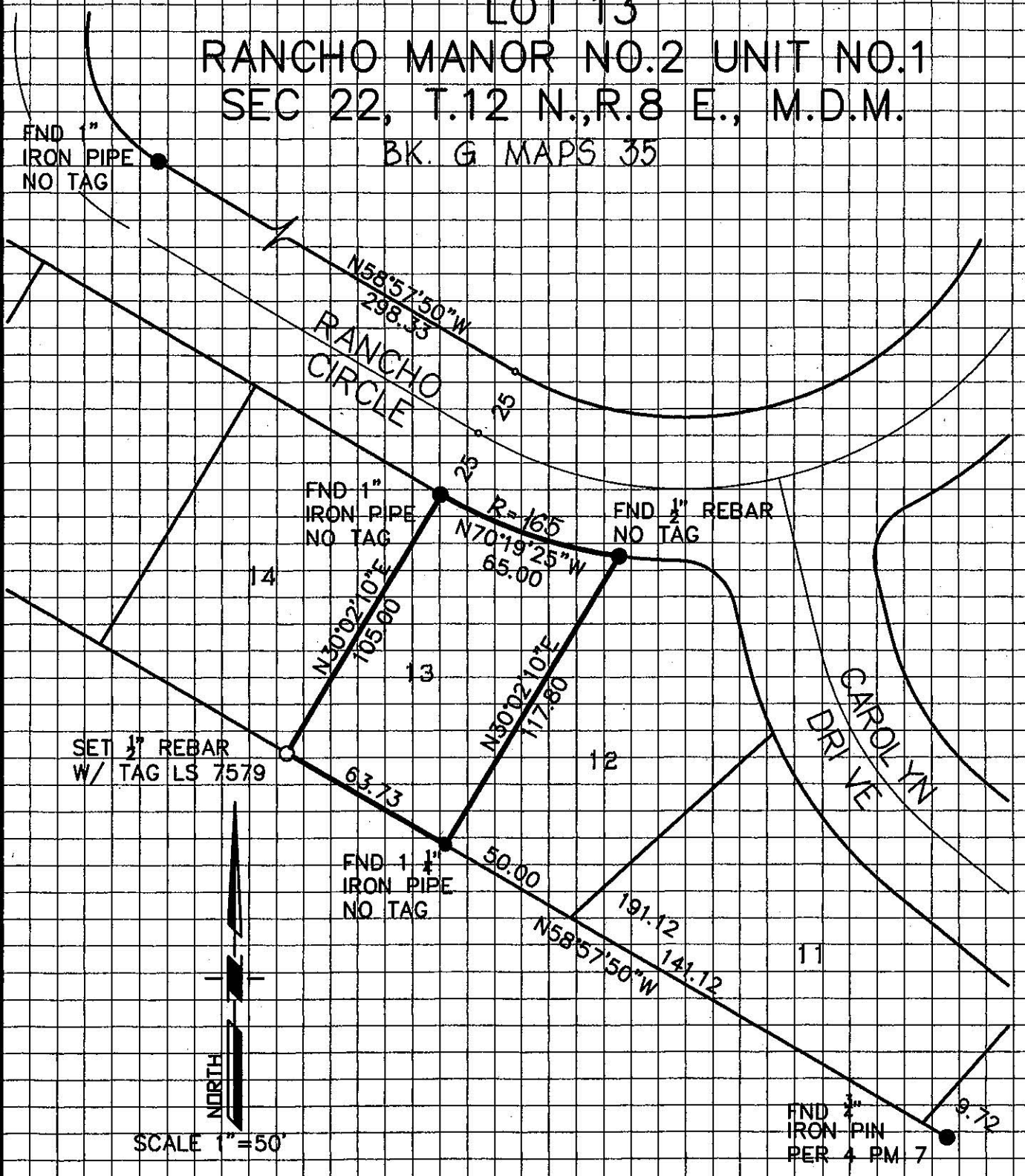


County Surveyor's Comment _____

BOOK 10 CORNER RECORDS PAGE 52

LOT 13
 RANCHO MANOR NO.2 UNIT NO.1
 SEC 22, T.12 N., R.8 E., M.D.M.

BK. G MAPS 35



BOOK 10 CORNER RECORDS PAGE 59