



PLACER, County Recorder
 RYAN RONCO
 DOC- 2021-0107873-00

RECORDING REQUESTED BY:

County of Placer
 Clerk of the Board

CREDIT CARD
 WEDNESDAY, AUG 25, 2021 04:15 PM
 MIC \$3.00 | AUT \$0.00 | SBS \$2.00
 ERD \$0.00 | SB2 \$0.00 | MAP \$9.00
 ADD \$0.00

Ttl Pd \$14.00 Rcpt # 03075672
 CLK6B9SJ93/MAB/1-3

TYPE OF MAP: Community Facilities District Map

BOOK: 4 PAGE: 32

NAME: Consolidated Boundary Map
 County of Placer
 Community Facilities District No. 2017-1
 Riolo Vineyard Specific Plan

NO. OF SHEETS: 3

REFERENCE TO RECORDED MAP: BOOK 4 PAGE 2
 DOCUMENT # 2020-0098022

CONSOLIDATED BOUNDARY MAP

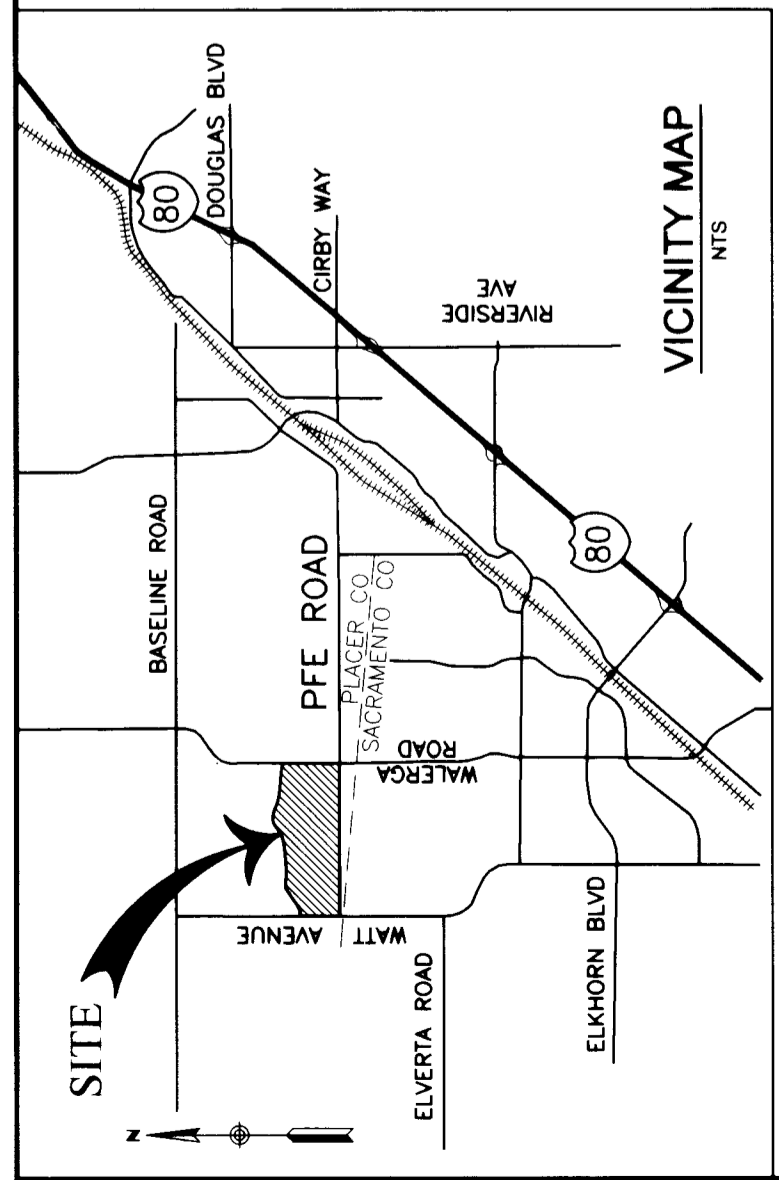
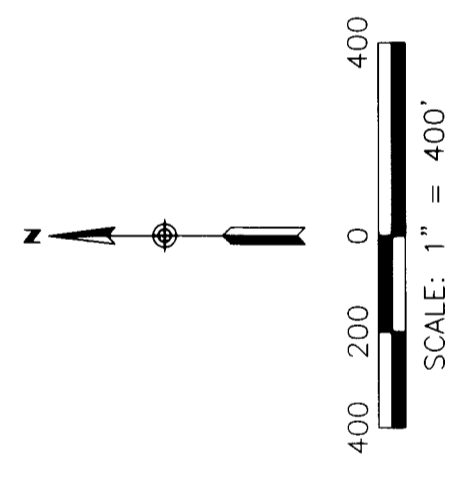
OF COUNTY OF PLACER

COMMUNITY FACILITIES DISTRICT NO. 2017-1

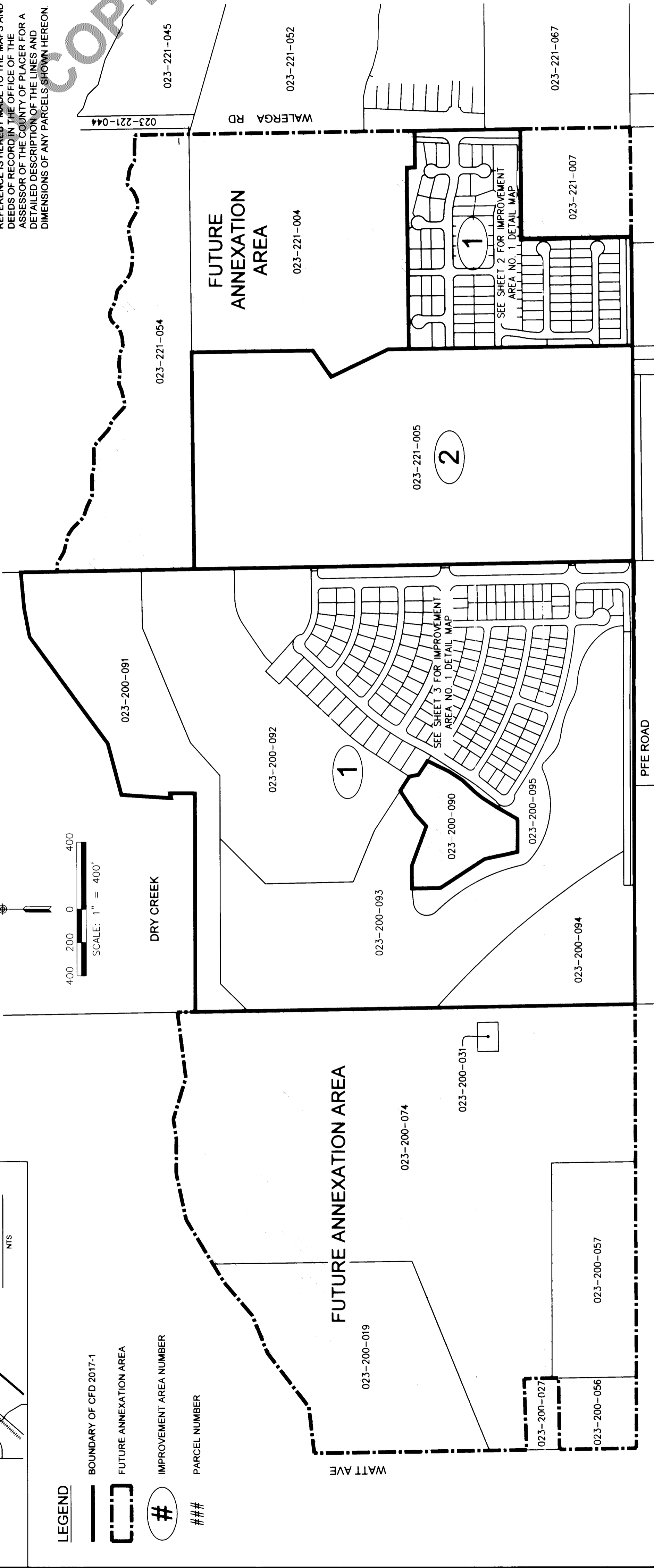
(RIOLO VINEYARD SPECIFIC PLAN), COUNTY OF PLACER, STATE OF CALIFORNIA

IMPROVEMENT AREA NO. 1 PARCELS	IMPROVEMENT AREA NO. 2 PARCELS	FUTURE ANNEX PARCELS
SEE MAP BELOW AND SHEET 2 & 3 FOR IMPROVEMENT AREA NO. 1 PARCEL INFORMATION.	023-221-005	023-221-004
		023-221-007
		023-221-054
		023-200-019
		023-200-031
		023-200-056
		023-200-057
		023-200-074
		023-200-090

NOTE:
REFERENCE IS HEREBY MADE TO THE MAPS AND DEEDS OF RECORD IN THE OFFICE OF THE ASSESSOR OF THE COUNTY OF PLACER FOR A DETAILED DESCRIPTION OF THE LINES AND DIMENSIONS OF ANY PARCELS SHOWN HEREON.



- LEGEND**
- BOUNDARY OF CFD 2017-1
 - FUTURE ANNEXATION AREA
 - IMPROVEMENT AREA NUMBER
 - PARCEL NUMBER

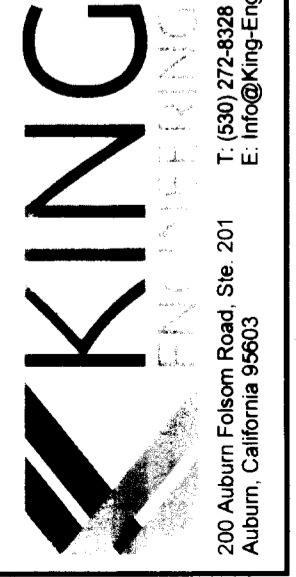


CLERK'S MAP STATEMENT
THIS CONSOLIDATED BOUNDARY MAP REFLECTS THE ANNEXATION OF CERTAIN PARCELS FROM THE FUTURE ANNEXATION AREA INTO IMPROVEMENT AREA NO. 2 OF THE COUNTY OF PLACER COMMUNITY FACILITIES DISTRICT NO. 2017-1 COUNTY OF PLACER, STATE OF CALIFORNIA. THIS CONSOLIDATED BOUNDARY MAP SUPERSEDES THE MAP ENTITLED "CONSOLIDATED BOUNDARY MAP OF COUNTY OF PLACER COMMUNITY FACILITIES DISTRICT NO. 2017-1 (RIOLO VINEYARD SPECIFIC PLAN), COUNTY OF PLACER, STATE OF CALIFORNIA," RECORDED ON THE 9TH DAY OF SEPTEMBER, 2020, AT THE HOUR OF 10:30 O'CLOCK A.M., IN BOOK 4 OF MAPS OF COMMUNITY FACILITIES DISTRICTS AT PAGE 2 IN THE OFFICE OF THE COUNTY RECORDER IN THE COUNTY OF PLACER, STATE OF CALIFORNIA.

CLERK'S MAP FILING STATEMENT
I HEREBY CERTIFY THAT THE WITHIN CONSOLIDATED BOUNDARY MAP FILED IN THE OFFICE OF THE CLERK OF THE BOARD OF SUPERVISORS OF THE COUNTY OF PLACER THIS 23 DAY OF August, 2021

CLERK'S MAP CERTIFICATE
I HEREBY CERTIFY THAT THE WITHIN CONSOLIDATED BOUNDARY MAP OF COUNTY OF PLACER COMMUNITY FACILITIES DISTRICT NO. 2017-1 (RIOLO VINEYARD SPECIFIC PLAN), COUNTY OF PLACER, STATE OF CALIFORNIA, WAS APPROVED BY THE BOARD OF SUPERVISORS OF THE COUNTY OF PLACER, AT A MEETING THEREOF, HELD ON THE 23 DAY OF August, 2021 BY ITS RESOLUTION NO. 2021-201

RECORDER'S STATEMENT
FILED THIS 26 DAY OF August, 2021, AT THE HOUR OF 4:15 O'CLOCK P. M., IN BOOK 4 OF MAPS OF ASSESSMENT AND COMMUNITY FACILITIES DISTRICTS AT PAGE 32 IN THE OFFICE OF THE COUNTY RECORDER IN THE COUNTY OF PLACER, STATE OF CALIFORNIA.




Maria Brannough
CLERK

Maria Brannough
CLERK

RYAN RONCO
PLACER COUNTY RECORDER
FILE NO. 2021-2107073
Ryan Ronco
DEPUTY

CONSOLIDATED BOUNDARY MAP

OF COUNTY OF PLACER
COMMUNITY FACILITIES DISTRICT NO. 2017-1
 (RIOLO VINEYARD SPECIFIC PLAN), COUNTY OF PLACER, STATE OF CALIFORNIA

LEGEND
 ——— BOUNDARY OF CFD 2017-1
 FUTURE ANNEXATION AREA
 ## REFERENCE NUMBER

IMPROVEMENT AREA NO. 1 DETAIL MAP



IMPROVEMENT AREA NO. 1 DETAIL TABLE

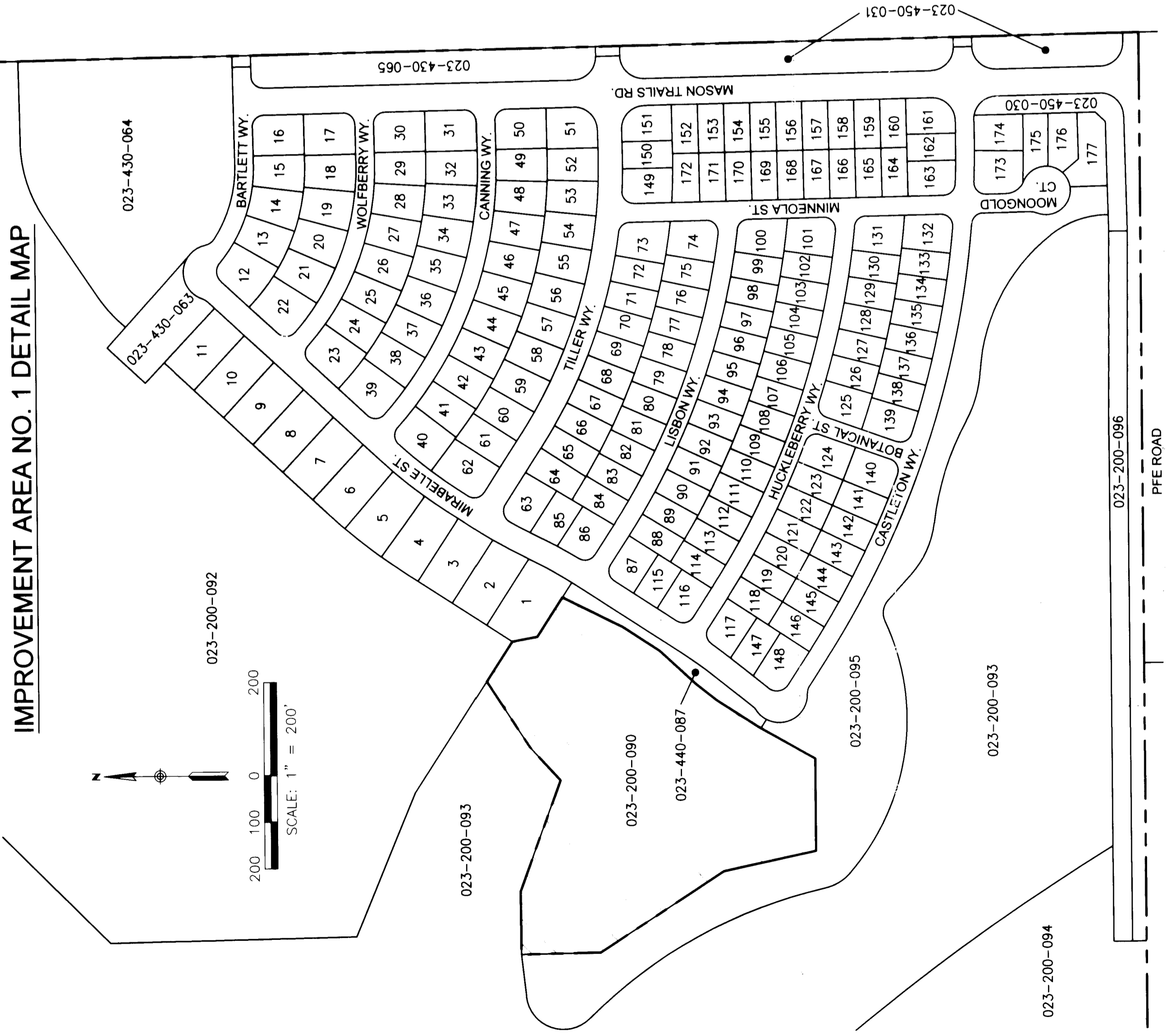
REFERENCE NUMBER	IMPROVEMENT AREA NO. 1 PARCELS	REFERENCE NUMBER	IMPROVEMENT AREA NO. 1 PARCELS	REFERENCE NUMBER	IMPROVEMENT AREA NO. 1 PARCELS
1	023-370-001	39	023-370-058	77	023-380-024
2	023-370-002	40	023-370-059	78	023-380-025
3	023-370-003	41	023-370-060	79	023-380-026
4	023-370-004	42	023-370-042	80	023-380-027
5	023-370-005	43	023-370-061	81	023-380-028
6	023-370-006	44	023-370-062	82	023-380-029
7	023-370-007	45	023-370-063	83	023-380-030
8	023-370-008	46	023-370-046	84	023-380-031
9	023-370-009	47	023-370-047	85	023-380-032
10	023-370-010	48	023-370-048	86	023-380-033
11	023-370-011	49	023-370-049	87	023-380-034
12	023-370-012	50	023-370-050	88	023-380-035
13	023-370-013	51	023-370-051	89	023-380-036
14	023-370-014	52	023-370-052	90	023-380-037
15	023-370-015	53	023-370-053	91	023-380-038
16	023-370-016	54	023-380-001	92	023-380-039
17	023-370-017	55	023-380-002	93	023-380-040
18	023-370-018	56	023-380-003	94	023-380-041
19	023-370-019	57	023-380-004	95	023-380-042
20	023-370-020	58	023-380-005	96	023-380-043
21	023-370-021	59	023-380-006	97	023-380-044
22	023-370-022	60	023-380-007	98	023-380-045
23	023-370-023	61	023-380-008	99	023-380-046
24	023-370-024	62	023-380-009	100	023-380-047
25	023-370-025	63	023-380-010	101	023-380-048
26	023-370-026	64	023-380-011	102	023-380-049
27	023-370-027	65	023-380-012	103	023-380-050
28	023-370-028	66	023-380-013	104	023-380-051
29	023-370-029	67	023-380-014	105	023-380-052
30	023-370-030	68	023-380-015	106	023-380-053
31	023-370-031	69	023-380-016	107	023-370-057
32	023-370-032	70	023-380-017	108	023-370-056
33	023-370-033	71	023-380-018	109	023-370-054
34	023-370-034	72	023-380-019	110	023-370-055
35	023-370-035	73	023-380-020	111	023-380-054
36	023-370-036	74	023-380-021	112	023-380-055
37	023-370-037	75	023-380-022	113	023-380-058
38	023-370-038	76	023-380-023	114	023-380-057
				115	023-380-056

NOTE:
 REFERENCE IS HEREBY MADE TO THE MAPS AND DEEDS OF RECORD IN THE OFFICE OF THE ASSESSOR OF THE COUNTY OF PLACER FOR A DETAILED DESCRIPTION OF THE LINES AND DIMENSIONS OF ANY PARCELS SHOWN HEREON.

CONSOLIDATED BOUNDARY MAP

OF COUNTY OF PLACER
COMMUNITY FACILITIES DISTRICT NO. 2017-1
 (RIOLO VINEYARD SPECIFIC PLAN), COUNTY OF PLACER, STATE OF CALIFORNIA

LEGEND
 ——— BOUNDARY OF CFD 2017-1
 [---] FUTURE ANNEXATION AREA
 ### REFERENCE NUMBER



IMPROVEMENT AREA NO. 1 DETAIL TABLE

REFERENCE NUMBER	IMPROVEMENT AREA NO. 1 PARCELS	REFERENCE NUMBER	IMPROVEMENT AREA NO. 1 PARCELS	REFERENCE NUMBER	IMPROVEMENT AREA NO. 1 PARCELS	REFERENCE NUMBER	IMPROVEMENT AREA NO. 1 PARCELS
1	023-430-001	46	023-430-046	91	023-440-029	135	023-440-073
2	023-430-002	47	023-430-047	92	023-440-030	136	023-440-074
3	023-430-003	48	023-430-048	93	023-440-031	137	023-440-075
4	023-430-004	49	023-430-049	94	023-440-032	138	023-440-076
5	023-430-005	50	023-430-050	95	023-440-033	139	023-440-077
6	023-430-006	51	023-430-051	96	023-440-034	140	023-440-078
7	023-430-007	52	023-430-052	97	023-440-035	141	023-440-079
8	023-430-008	53	023-430-053	98	023-440-036	142	023-440-080
9	023-430-009	54	023-430-054	99	023-440-037	143	023-440-081
10	023-430-010	55	023-430-055	100	023-440-038	144	023-440-082
11	023-430-011	56	023-430-056	101	023-440-039	145	023-440-083
12	023-430-012	57	023-430-057	102	023-440-040	146	023-440-084
13	023-430-013	58	023-430-058	103	023-440-041	147	023-440-085
14	023-430-014	59	023-430-059	104	023-440-042	148	023-440-086
15	023-430-015	60	023-430-060	105	023-440-043	149	023-450-001
16	023-430-016	61	023-430-061	106	023-440-044	150	023-450-002
17	023-430-017	62	023-430-062	107	023-440-045	151	023-450-003
18	023-430-018	63	023-440-001	108	023-440-046	152	023-450-004
19	023-430-019	64	023-440-002	109	023-440-047	153	023-450-005
20	023-430-020	65	023-440-003	110	023-440-048	154	023-450-006
21	023-430-021	66	023-440-004	111	023-440-049	155	023-450-007
22	023-430-022	67	023-440-005	112	023-440-050	156	023-450-008
23	023-430-023	68	023-440-006	113	023-440-051	157	023-450-009
24	023-430-024	69	023-440-007	114	023-440-052	158	023-450-010
25	023-430-025	70	023-440-008	115	023-440-053	159	023-450-011
26	023-430-026	71	023-440-009	116	023-440-054	160	023-450-012
27	023-430-027	72	023-440-010	117	023-440-055	161	023-450-013
28	023-430-028	73	023-440-011	118	023-440-056	162	023-450-014
29	023-430-029	74	023-440-012	119	023-440-057	163	023-450-015
30	023-430-030	75	023-440-013	120	023-440-058	164	023-450-016
31	023-430-031	76	023-440-014	121	023-440-059	165	023-450-017
32	023-430-032	77	023-440-015	122	023-440-060	166	023-450-018
33	023-430-033	78	023-440-016	123	023-440-061	167	023-450-019
34	023-430-034	79	023-440-017	124	023-440-062	168	023-450-020
35	023-430-035	80	023-440-018	125	023-440-063	169	023-450-021
36	023-430-036	81	023-440-019	126	023-440-064	170	023-450-022
37	023-430-037	82	023-440-020	127	023-440-065	171	023-450-023
38	023-430-038	83	023-440-021	128	023-440-066	172	023-450-024
39	023-430-039	84	023-440-022	129	023-440-067	173	023-450-025
40	023-430-040	85	023-440-023	130	023-440-068	174	023-450-026
41	023-430-041	86	023-440-024	131	023-440-069	175	023-450-027
42	023-430-042	87	023-440-025	132	023-440-070	176	023-450-028
43	023-430-043	88	023-440-026	133	023-440-071	177	023-450-029
44	023-430-044	89	023-440-027	134	023-440-072		
45	023-430-045	90	023-440-028	135	023-440-073		

NOTE:

REFERENCE IS HEREBY MADE TO THE MAPS AND DEEDS OF RECORD IN THE OFFICE OF THE ASSESSOR OF THE COUNTY OF PLACER FOR A DETAILED DESCRIPTION OF THE LINES AND DIMENSIONS OF ANY PARCELS SHOWN HEREON.

