



PLACER, County Recorder

RYAN RONCO

DOC- 2021-0148521-00

CREDIT CARD

TUESDAY, DEC 7, 2021 11:25 AM

MIC \$3.00 | AUT \$0.00 | SBS \$2.00

ERD \$0.00 | SB2 \$0.00 | MAP \$9.00

ADD \$0.00

**RECORDING REQUESTED BY:**

Ttl Pd \$14.00 Rcpt # 03112697

CLKBZQJ9T2/SM/1-3

Placer County Treasurer-Tax Collector

TYPE OF MAP: Community Facilities District Map

BOOK: 4 PAGE: 45

NAME: Consolidated Boundary Map No. 3  
Community Facilities District No. 2017-1  
Riolo Vineyard Specific Plan  
County of Placer

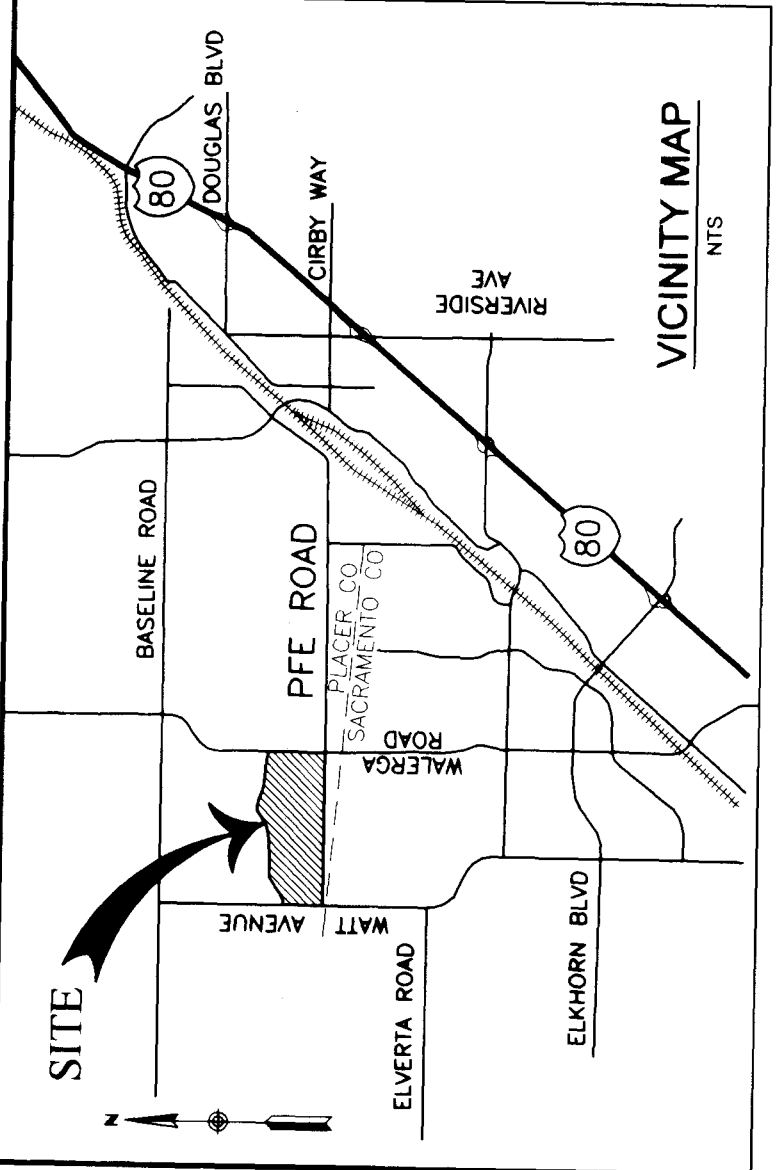
NO. OF SHEETS: 3

REFERENCE TO RECORDED MAP: BOOK 4 PAGE 32

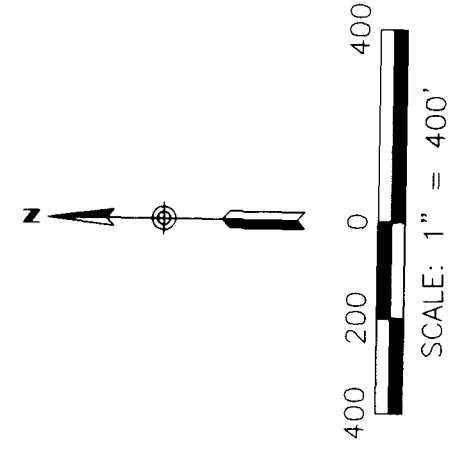
# CONSOLIDATED BOUNDARY MAP NO. 3

## OF COUNTY OF PLACER COMMUNITY FACILITIES DISTRICT NO. 2017-1

(RIOLO VINEYARD SPECIFIC PLAN), COUNTY OF PLACER, STATE OF CALIFORNIA

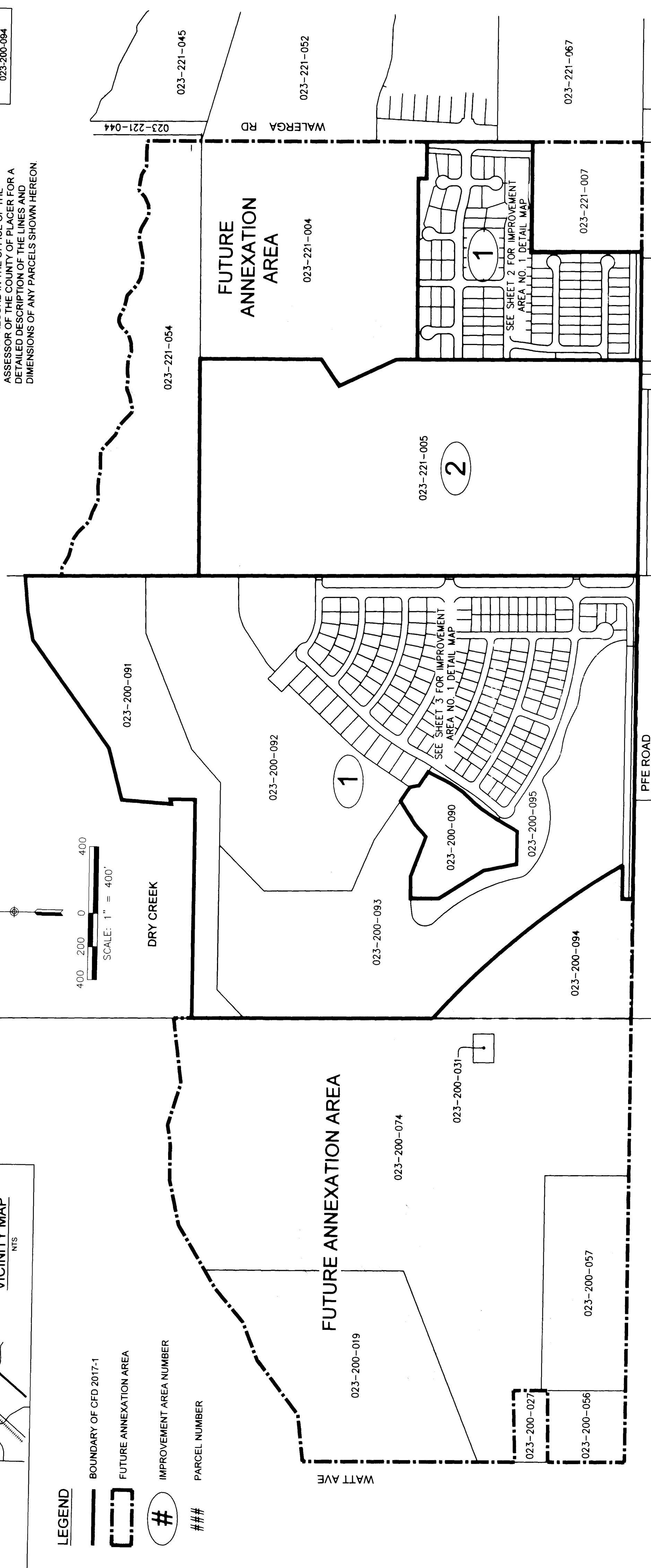


- LEGEND**
- BOUNDARY OF CFD 2017-1
  - - - FUTURE ANNEXATION AREA
  - # IMPROVEMENT AREA NUMBER
  - ## PARCEL NUMBER



**NOTE:**  
REFERENCE IS HEREBY MADE TO THE MAPS AND DEEDS OF RECORD IN THE OFFICE OF THE ASSESSOR OF THE COUNTY OF PLACER FOR A DETAILED DESCRIPTION OF THE LINES AND DIMENSIONS OF ANY PARCELS SHOWN HEREON

IMPROVEMENT AREA NO. 1 PARCELS	IMPROVEMENT AREA NO. 2 PARCELS	FUTURE ANNEX PARCELS
SEE MAP BELOW AND SHEET 2 & 3 FOR IMPROVEMENT AREA NO. 1 PARCEL INFORMATION	023-221-005	023-221-004
		023-221-007
		023-221-054
		023-200-019
		023-200-031
		023-200-056
		023-200-057
		023-200-074
		023-200-090
		023-200-084



**CLERK'S MAP STATEMENT**  
THIS CONSOLIDATED BOUNDARY MAP NO. 3 REFLECTS THE RECORDATION OF A NOTICE OF CESSATION RELATED TO ASSESSOR'S PARCEL NO. 023-200-94, WHICH WAS PART OF IMPROVEMENT AREA NO. 1, AND THE RETURN OF SUCH PARCEL TO THE FUTURE ANNEXATION AREA. THIS CONSOLIDATED BOUNDARY MAP NO. 3 SUPERSEDES THE MAP ENTITLED "CONSOLIDATED BOUNDARY MAP OF COUNTY OF PLACER COMMUNITY FACILITIES DISTRICT NO. 2017-1 (RIOLO VINEYARD SPECIFIC PLAN), COUNTY OF PLACER, STATE OF CALIFORNIA" RECORDED ON THE 25TH DAY OF AUGUST, 2021, AT THE HOUR OF 04:15 O'CLOCK P.M. IN BOOK 4 OF MAPS OF COMMUNITY FACILITIES DISTRICTS AT PAGE 32 IN THE OFFICE OF THE COUNTY RECORDER IN THE COUNTY OF PLACER, STATE OF CALIFORNIA.

**CLERK'S MAP FILING STATEMENT**  
I HEREBY CERTIFY THAT THE WITHIN CONSOLIDATED BOUNDARY MAP NO. 3 OF COUNTY OF PLACER COMMUNITY FACILITIES DISTRICT NO. 2017-1 (RIOLO VINEYARD SPECIFIC PLAN), COUNTY OF PLACER, STATE OF CALIFORNIA, WAS APPROVED BY THE BOARD OF SUPERVISORS OF THE COUNTY OF PLACER, AT A MEETING THEREOF, HELD ON THE 16th DAY OF December, 2021, BY ITS RESOLUTION NO. 2021-319.

*Megan Reed*  
CLERK

**CLERK'S MAP CERTIFICATE**  
I HEREBY CERTIFY THAT THE WITHIN CONSOLIDATED BOUNDARY MAP NO. 3 OF COUNTY OF PLACER COMMUNITY FACILITIES DISTRICT NO. 2017-1 (RIOLO VINEYARD SPECIFIC PLAN), COUNTY OF PLACER, STATE OF CALIFORNIA, WAS APPROVED BY THE BOARD OF SUPERVISORS OF THE COUNTY OF PLACER, AT A MEETING THEREOF, HELD ON THE 16th DAY OF December, 2021, BY ITS RESOLUTION NO. 2021-319.

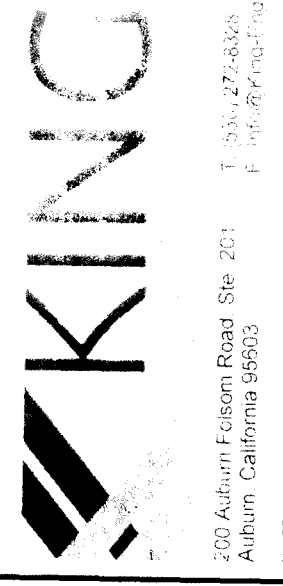
*Megan Reed*  
CLERK

**RECORDER'S STATEMENT**  
FILED THIS 16th DAY OF December, 2021, AT THE HOUR OF 11:35 O'CLOCK A.M. IN BOOK 4 OF MAPS OF COMMUNITY FACILITIES DISTRICTS AT PAGE 45 IN THE OFFICE OF THE COUNTY RECORDER IN THE COUNTY OF PLACER, STATE OF CALIFORNIA.

FEE \$14  
FILE NO. 2021-0148521

RYAN RONCO  
PLACER COUNTY RECORDER

*A. Mc O...*  
DEPUTY



**LEGEND**

BOUNDARY OF CFD 2017-1

FUTURE ANNEXATION AREA

## REFERENCE NUMBER

# CONSOLIDATED BOUNDARY MAP NO. 3

OF COUNTY OF PLACER

## COMMUNITY FACILITIES DISTRICT NO. 2017-1

(RIOLO VINEYARD SPECIFIC PLAN), COUNTY OF PLACER, STATE OF CALIFORNIA

**IMPROVEMENT AREA NO. 1 DETAIL MAP**

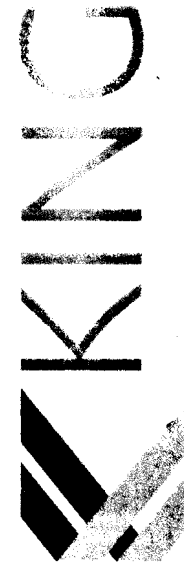
**IMPROVEMENT AREA NO. 1 DETAIL TABLE**



REFERENCE NUMBER	IMPROVEMENT AREA NO. 1 PARCELS	REFERENCE NUMBER	IMPROVEMENT AREA NO. 1 PARCELS	REFERENCE NUMBER	IMPROVEMENT AREA NO. 1 PARCELS
1	023-370-001	39	023-370-068	77	023-380-024
2	023-370-002	40	023-370-069	78	023-380-025
3	023-370-003	41	023-370-060	79	023-380-026
4	023-370-004	42	023-370-042	80	023-380-027
5	023-370-005	43	023-370-061	81	023-380-028
6	023-370-006	44	023-370-062	82	023-380-029
7	023-370-007	45	023-370-063	83	023-380-030
8	023-370-008	46	023-370-046	84	023-380-031
9	023-370-009	47	023-370-047	85	023-380-032
10	023-370-010	48	023-370-048	86	023-380-033
11	023-370-011	49	023-370-049	87	023-380-034
12	023-370-012	50	023-370-050	88	023-380-035
13	023-370-013	51	023-370-051	89	023-380-036
14	023-370-014	52	023-370-052	90	023-380-037
15	023-370-015	53	023-370-053	91	023-380-038
16	023-370-016	54	023-380-001	92	023-380-039
17	023-370-017	55	023-380-002	93	023-380-040
18	023-370-018	56	023-380-003	94	023-380-041
19	023-370-019	57	023-380-004	95	023-380-042
20	023-370-020	58	023-380-005	96	023-380-043
21	023-370-021	59	023-380-006	97	023-380-044
22	023-370-022	60	023-380-007	98	023-380-045
23	023-370-023	61	023-380-008	99	023-380-046
24	023-370-024	62	023-380-009	100	023-380-047
25	023-370-025	63	023-380-010	101	023-380-048
26	023-370-026	64	023-380-011	102	023-380-049
27	023-370-027	65	023-380-012	103	023-380-050
28	023-370-028	66	023-380-013	104	023-380-051
29	023-370-029	67	023-380-014	105	023-380-052
30	023-370-030	68	023-380-015	106	023-380-053
31	023-370-031	69	023-380-016	107	023-370-057
32	023-370-032	70	023-380-017	108	023-370-056
33	023-370-033	71	023-380-018	109	023-370-054
34	023-370-034	72	023-380-019	110	023-370-055
35	023-370-035	73	023-380-020	111	023-380-054
36	023-370-036	74	023-380-021	112	023-380-055
37	023-370-037	75	023-380-022	113	023-380-058
38	023-370-038	76	023-380-023	114	023-380-057
				115	023-380-056

**NOTE:**

REFERENCE IS HEREBY MADE TO THE MAPS AND DEEDS OF RECORD IN THE OFFICE OF THE ASSESSOR OF THE COUNTY OF PLACER FOR A DETAILED DESCRIPTION OF THE LINES AND DIMENSIONS OF ANY PARCELS SHOWN HEREON.



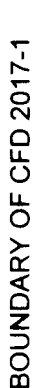

200 Auburn Folsom Road, Ste. 201  
Auburn, California 95603  
Tel: 530-835-3333  
Fax: 530-835-3334  
www.king.com

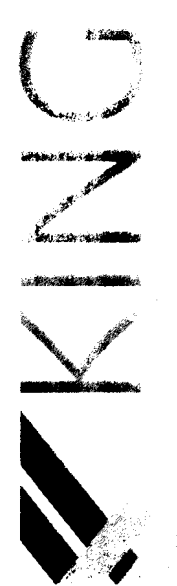
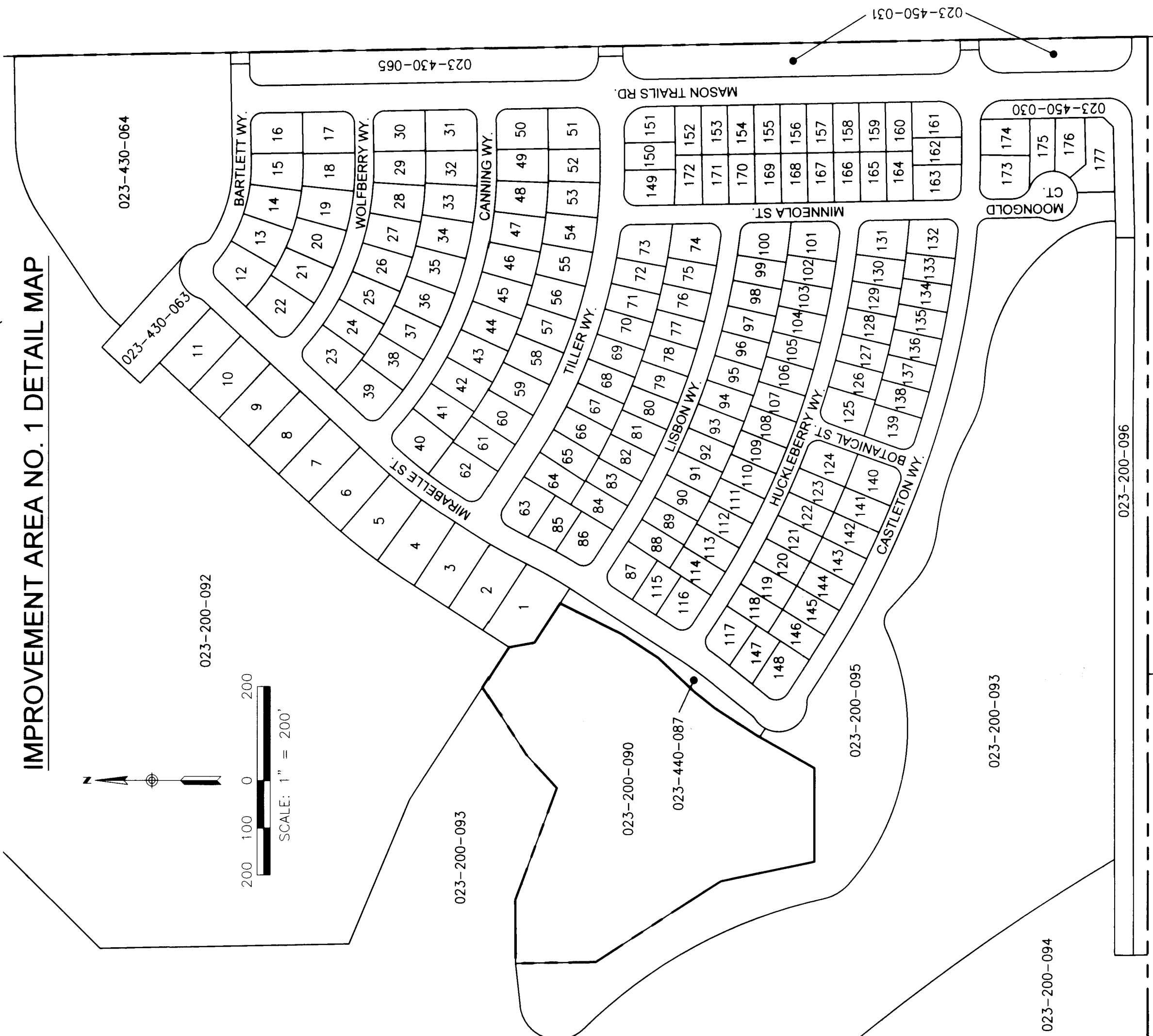
H:\PROJECTS\2017\CFD\IMPROVEMENT PLANS\EXHIBITS\18-05\_CFD BOUNDARY EXHIBIT DWG-120201 3.33 PM

# CONSOLIDATED BOUNDARY MAP NO. 3

OF COUNTY OF PLACER  
**COMMUNITY FACILITIES DISTRICT NO. 2017-1**  
 (RIOLO VINEYARD SPECIFIC PLAN), COUNTY OF PLACER, STATE OF CALIFORNIA

**IMPROVEMENT AREA NO. 1 DETAIL MAP**

- LEGEND**
-  BOUNDARY OF CFD 2017-1
  -  FUTURE ANNEXATION AREA
  - ##** REFERENCE NUMBER



200 Auburn-Holcomb Road  
 Auburn, California 95602  
 1-800-725-6268  
 www.kingimprovements.com

APPROVED MASON TRAILS SUBSHEET SETS IMPROVEMENT PLANS EXHIBITS 18-05 - CFD BOUNDARY EXHIBIT DWG 1025201.1 15 PM

**NOTE:**  
 REFERENCE IS HEREBY MADE TO THE MAPS AND DEEDS OF RECORD IN THE OFFICE OF THE ASSESSOR OF THE COUNTY OF PLACER FOR A DETAILED DESCRIPTION OF THE LINES AND DIMENSIONS OF ANY PARCELS SHOWN HEREON.

**IMPROVEMENT AREA NO. 1 DETAIL TABLE**

REFERENCE NUMBER	IMPROVEMENT AREA NO. 1 PARCELS	REFERENCE NUMBER	IMPROVEMENT AREA NO. 1 PARCELS	REFERENCE NUMBER	IMPROVEMENT AREA NO. 1 PARCELS	REFERENCE NUMBER	IMPROVEMENT AREA NO. 1 PARCELS
1	023-430-001	46	023-430-046	91	023-440-029	136	023-440-074
2	023-430-002	47	023-430-047	92	023-440-030	137	023-440-075
3	023-430-003	48	023-430-048	93	023-440-031	138	023-440-076
4	023-430-004	49	023-430-049	94	023-440-032	139	023-440-077
5	023-430-005	50	023-430-050	95	023-440-033	140	023-440-078
6	023-430-006	51	023-430-051	96	023-440-034	141	023-440-079
7	023-430-007	52	023-430-052	97	023-440-035	142	023-440-080
8	023-430-008	53	023-430-053	98	023-440-036	143	023-440-081
9	023-430-009	54	023-430-054	99	023-440-037	144	023-440-082
10	023-430-010	55	023-430-055	100	023-440-038	145	023-440-083
11	023-430-011	56	023-430-056	101	023-440-039	146	023-440-084
12	023-430-012	57	023-430-057	102	023-440-040	147	023-440-085
13	023-430-013	58	023-430-058	103	023-440-041	148	023-440-086
14	023-430-014	59	023-430-059	104	023-440-042	149	023-450-001
15	023-430-015	60	023-430-060	105	023-440-043	150	023-450-002
16	023-430-016	61	023-430-061	106	023-440-044	151	023-450-003
17	023-430-017	62	023-430-062	107	023-440-045	152	023-450-004
18	023-430-018	63	023-440-001	108	023-440-046	153	023-450-005
19	023-430-019	64	023-440-002	109	023-440-047	154	023-450-006
20	023-430-020	65	023-440-003	110	023-440-048	155	023-450-007
21	023-430-021	66	023-440-004	111	023-440-049	156	023-450-008
22	023-430-022	67	023-440-005	112	023-440-050	157	023-450-009
23	023-430-023	68	023-440-006	113	023-440-051	158	023-450-010
24	023-430-024	69	023-440-007	114	023-440-052	159	023-450-011
25	023-430-025	70	023-440-008	115	023-440-053	160	023-450-012
26	023-430-026	71	023-440-009	116	023-440-054	161	023-450-013
27	023-430-027	72	023-440-010	117	023-440-055	162	023-450-014
28	023-430-028	73	023-440-011	118	023-440-056	163	023-450-015
29	023-430-029	74	023-440-012	119	023-440-057	164	023-450-016
30	023-430-030	75	023-440-013	120	023-440-058	165	023-450-017
31	023-430-031	76	023-440-014	121	023-440-059	166	023-450-018
32	023-430-032	77	023-440-015	122	023-440-060	167	023-450-019
33	023-430-033	78	023-440-016	123	023-440-061	168	023-450-020
34	023-430-034	79	023-440-017	124	023-440-062	169	023-450-021
35	023-430-035	80	023-440-018	125	023-440-063	170	023-450-022
36	023-430-036	81	023-440-019	126	023-440-064	171	023-450-023
37	023-430-037	82	023-440-020	127	023-440-065	172	023-450-024
38	023-430-038	83	023-440-021	128	023-440-066	173	023-450-025
39	023-430-039	84	023-440-022	129	023-440-067	174	023-450-026
40	023-430-040	85	023-440-023	130	023-440-068	175	023-450-027
41	023-430-041	86	023-440-024	131	023-440-069	176	023-450-028
42	023-430-042	87	023-440-025	132	023-440-070	177	023-450-029
43	023-430-043	88	023-440-026	133	023-440-071		
44	023-430-044	89	023-440-027	134	023-440-072		
45	023-430-045	90	023-440-028	135	023-440-073		