



PLACER, County Recorder

RYAN RONCO

DOC- 2020-0098022-00

3031

WEDNESDAY, SEP 9, 2020 10:30 AM

MIC \$3.00 | AUT \$0.00 | SBS \$1.00

ERD \$0.00 | SB2 \$0.00 | MAP \$7.00

ADD \$0.00

RECORDING REQUESTED BY:

Ttl Pd \$11.00

Rcpt # 02932393

CLKBZPL9T2/SM/1-2

Community Development Resource Agency

TYPE OF MAP: Community Facilities District Map

BOOK: 4

PAGE: 2

NAME: Community Facilities District No. 2017-1
Riolo Vineyard Specific Plan
Consolidated Boundary Map
County of Placer

REFERENCE TO RECORDED MAP: BOOK 3 PAGE 76

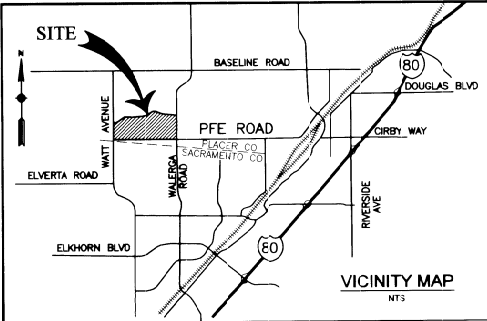
NO. OF SHEETS: 2

CONSOLIDATED BOUNDARY MAP

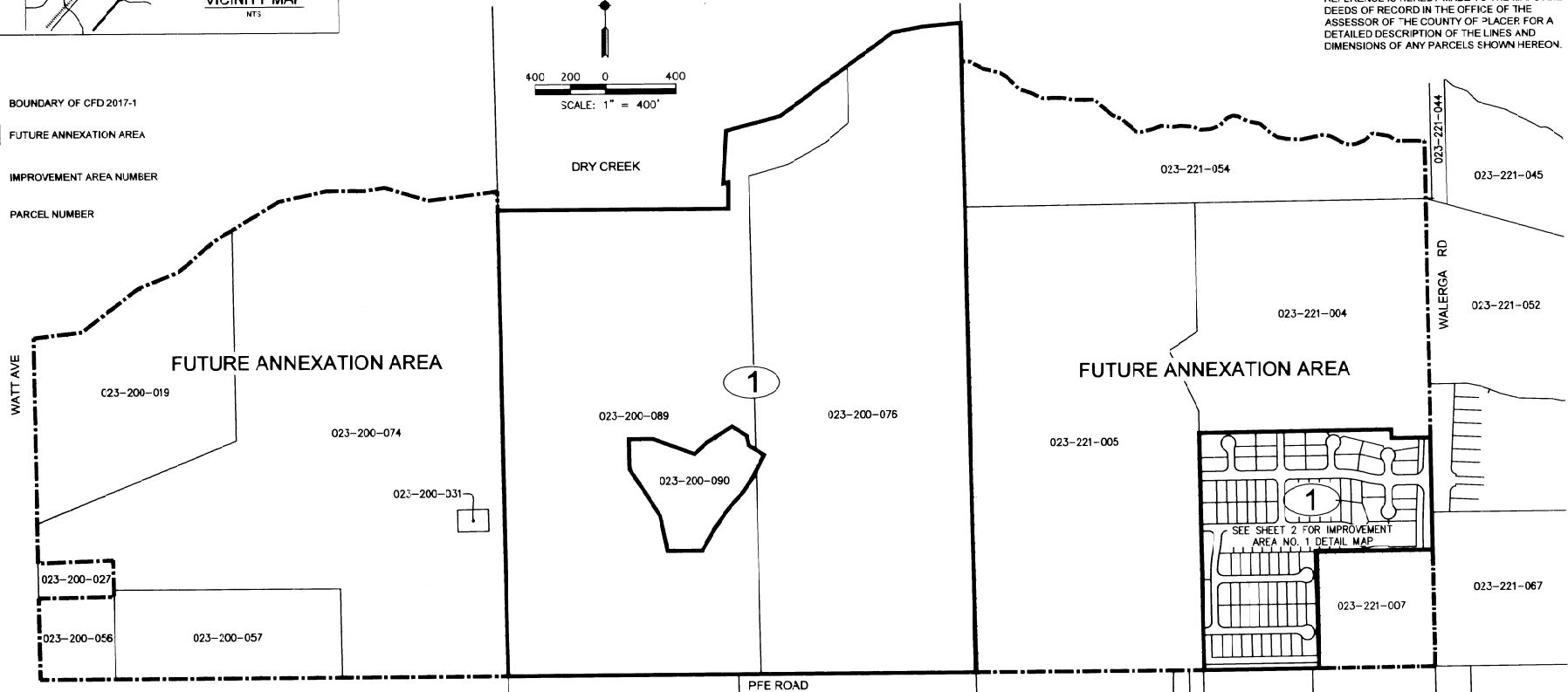
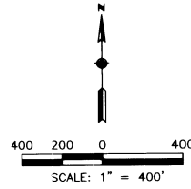
OF COUNTY OF PLACER
COMMUNITY FACILITIES DISTRICT NO. 2017-1
(RIOLO VINEYARD SPECIFIC PLAN), COUNTY OF PLACER, STATE OF CALIFORNIA

IMPROVEMENT AREA NO. 1 PARCELS*	FUTURE ANNEX PARCELS
023-200-076	023-221-004
023-200-089	023-221-005
	023-221-007
	023-221-054
	023-200-019
	023-200-031
	023-200-056
	023-200-057
	023-200-074
	023-200-090

NOTE:
REFERENCE IS HEREBY MADE TO THE MAPS AND DEEDS OF RECORD IN THE OFFICE OF THE ASSESSOR OF THE COUNTY OF PLACER FOR A DETAILED DESCRIPTION OF THE LINES AND DIMENSIONS OF ANY PARCELS SHOWN HEREON.



- LEGEND**
- BOUNDARY OF CFD 2017-1
 - FUTURE ANNEXATION AREA
 - IMPROVEMENT AREA NUMBER
 - PARCEL NUMBER



CLERK'S MAP STATEMENT
THIS CONSOLIDATED BOUNDARY MAP REFLECTS THE ANNEXATION OF CERTAIN PARCELS FROM THE FUTURE ANNEXATION AREA INTO IMPROVEMENT AREA NO. 1 OF THE COUNTY OF PLACER COMMUNITY FACILITIES DISTRICT NO. 2017-1, COUNTY OF PLACER, STATE OF CALIFORNIA. THIS CONSOLIDATED BOUNDARY MAP SUPERSEDES THE MAP ENTITLED "PROPOSED BOUNDARIES AND FUTURE ANNEXATION AREA OF COUNTY OF PLACER COMMUNITY FACILITIES DISTRICT NO. 2017-1 (RIOLO VINEYARD SPECIFIC PLAN), COUNTY OF PLACER, STATE OF CALIFORNIA" RECORDED ON THE 13th DAY OF SEPTEMBER, 2017, AT THE HOUR OF 13:58 O'CLOCK P.M., IN BOOK 3 OF MAPS OF ASSESSMENT AND COMMUNITY FACILITIES DISTRICTS AT PAGE 76 IN THE OFFICE OF THE COUNTY RECORDER IN THE COUNTY OF PLACER, STATE OF CALIFORNIA.

CLERK'S MAP FILING STATEMENT
FILED IN THE OFFICE OF THE CLERK OF THE BOARD OF SUPERVISORS OF THE COUNTY OF PLACER THIS 13th DAY OF September, 2020.
Marian Wood
CLERK

CLERK'S MAP CERTIFICATE
I HEREBY CERTIFY THAT WITHIN CONSOLIDATION BOUNDARY MAP OF COUNTY OF PLACER, COMMUNITY FACILITIES DISTRICT NO. 2017-1 (RIOLO VINEYARD SPECIFIC PLAN), COUNTY OF PLACER, STATE OF CALIFORNIA, WAS APPROVED BY THE BOARD OF SUPERVISORS OF THE COUNTY OF PLACER, AT A MEETING THEREOF, HELD ON THE 13th DAY OF September, 2020, BY ITS RESOLUTION NO. 2020-156.



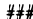
RECORDER'S STATEMENT
FILED THIS 13th DAY OF September, 2020 AT THE HOUR OF 10:30 O'CLOCK A.M. IN BOOK 4 OF MAPS OF ~~ASSESSMENT AND~~ COMMUNITY FACILITIES DISTRICTS AT PAGE 2 IN THE OFFICE OF THE COUNTY RECORDER IN THE COUNTY OF PLACER, STATE OF CALIFORNIA.

FEE \$11.00
FILE NO 2020-009802a
RYAN RONCO
PLACER COUNTY RECORDER
d. Mc Don
DEPUTY



200 Auburn Folsom Road, Ste. 201 T: (530) 272-8328
Auburn, California 95603 E: info@King-Engineering-Inc.com

LEGEND

-  BOUNDARY OF C-FD 2017-1
-  FUTURE ANNEXATION AREA
-  REFERENCE NUMBER

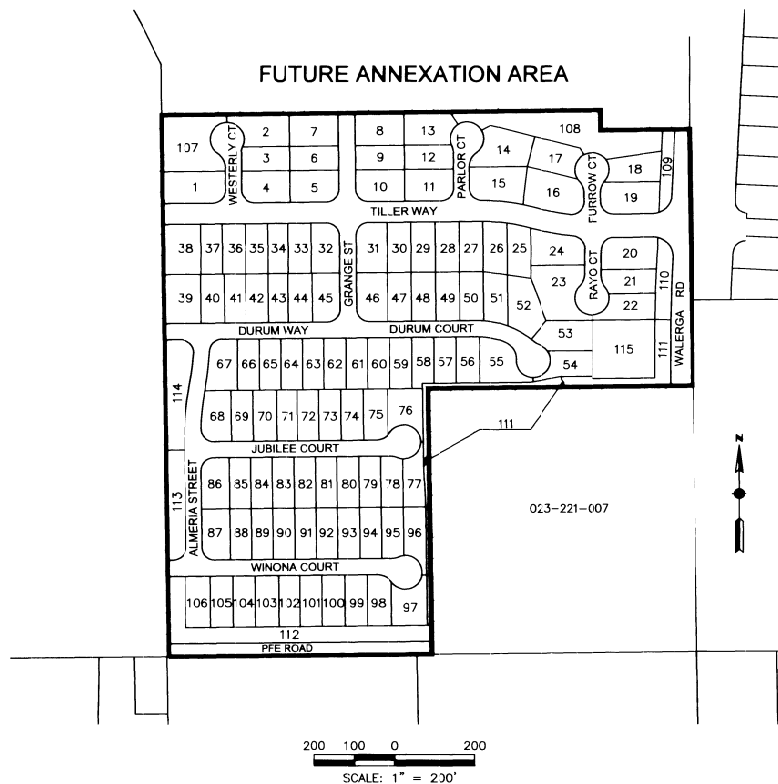
CONSOLIDATED BOUNDARY MAP

OF COUNTY OF PLACER

COMMUNITY FACILITIES DISTRICT NO. 2017-1

(RIOLO VINEYARD SPECIFIC PLAN), COUNTY OF PLACER, STATE OF CALIFORNIA

IMPROVEMENT AREA NO. 1 DETAIL MAP



IMPROVEMENT AREA NO. 1 DETAIL TABLE

REFERENCE NUMBER	IMPROVEMENT AREA NO. 1 PARCELS	REFERENCE NUMBER	IMPROVEMENT AREA NO. 1 PARCELS	REFERENCE NUMBER	IMPROVEMENT AREA NO. 1 PARCELS
1	023-370-001	39	023-370-058	77	C23-380-024
2	023-370-002	40	023-370-059	78	C23-380-025
3	023-370-003	41	023-370-060	79	C23-380-026
4	023-370-004	42	023-370-042	80	C23-380-027
5	023-370-005	43	023-370-061	81	C23-380-028
6	023-370-006	44	023-370-062	82	C23-380-029
7	023-370-007	45	023-370-063	83	C23-380-030
8	023-370-008	46	023-370-046	84	C23-380-031
9	023-370-009	47	023-370-047	85	C23-380-032
10	023-370-010	48	023-370-048	86	C23-380-033
11	023-370-011	49	023-370-049	87	C23-380-034
12	023-370-012	50	023-370-050	88	C23-380-035
13	023-370-013	51	023-370-051	89	C23-380-036
14	023-370-014	52	023-370-052	90	C23-380-037
15	023-370-015	53	023-370-053	91	C23-380-038
16	023-370-016	54	023-380-001	92	C23-380-039
17	023-370-017	55	023-380-002	93	C23-380-040
18	023-370-018	56	023-380-003	94	C23-380-041
19	023-370-019	57	023-380-004	95	C23-380-042
20	023-370-020	58	023-380-005	96	C23-380-043
21	023-370-021	59	023-380-006	97	C23-380-044
22	023-370-022	60	023-380-007	98	C23-380-045
23	023-370-023	61	023-380-008	99	C23-380-046
24	023-370-024	62	023-380-009	100	C23-380-047
25	023-370-025	63	023-380-010	101	C23-380-048
26	023-370-026	64	023-380-011	102	C23-380-049
27	023-370-027	65	023-380-012	103	C23-380-050
28	023-370-028	66	023-380-013	104	C23-380-051
29	023-370-029	67	023-380-014	105	C23-380-052
30	023-370-030	68	023-380-015	106	C23-380-053
31	023-370-031	69	023-380-016	107	C23-370-057
32	023-370-032	70	023-380-017	108	C23-370-056
33	023-370-033	71	023-380-018	109	C23-370-054
34	023-370-034	72	023-380-019	110	C23-370-055
35	023-370-035	73	023-380-020	111	C23-380-054
36	023-370-036	74	023-380-021	112	C23-380-055
37	023-370-037	75	023-380-022	113	C23-380-058
38	023-370-038	76	023-380-023	114	C23-380-057
				115	C23-380-056

NOTE:

REFERENCE IS HEREBY MADE TO THE MAPS AND DEEDS OF RECORD IN THE OFFICE OF THE ASSESSOR OF THE COUNTY OF PLACER FOR A DETAILED DESCRIPTION OF THE LINES AND DIMENSIONS OF ANY PARCELS SHOWN HEREON.



200 Auburn Forum Road Ste 231 T (530) 272-8328
Auburn, California 95603 E info@king-engineering-inc.com

H:\PROJ15-27_GLEN WALLOWAY\ASSET SETS\IMPROVEMENT PLANS\CD\15-21 - 2FD BOUNDARY EDR\BIT.DWG 8/13/2020 11:55 AM