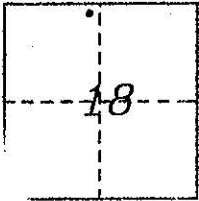


CORNER RECORD

COUNTY OF PLACER, CALIFORNIA

City of _____ Document Number _____

Brief Legal Description LOT 5, BLOCK 2, Mckinney Estates Unit 1, Book "F" Maps, Page 61



T.14N., R.17E.
M.D.B. & M.

CORNER TYPE

Government Corner Control
Meander Property
Rancho Other
Date of Survey October 2005

COORDINATES
(Optional)

N. _____
E. _____
Zone _____ Datum _____
Elev. _____

Corner— Left as found Found and tagged Established Reestablished Rebuilt

Identification and type of corner found: Evidence used to identify or procedure used to establish or reestablish corner:

Found monument as indicated

A description of the physical condition of the monument as found and as set or reset:

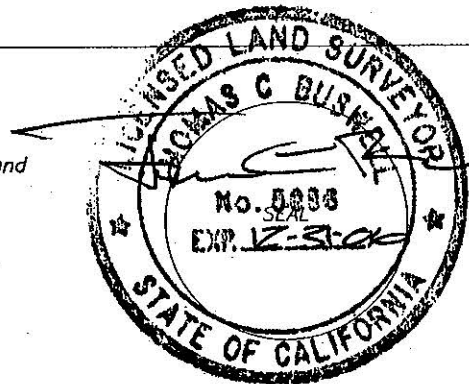
set 5/8" rebar with 2" aluminum cap
stamped "TAHOE BASIN LAND SURVEYING,
THOMAS C. BUSWELL, LS 5886".

SURVEYOR'S STATEMENT

This Corner Record was prepared by me or under my direction in conformance with the Land

Surveyor's Act on MARCH 2006

Signed Thomas C. Buswell L.S. or R.C.E. Number 5886
Thomas C. Buswell, PLS



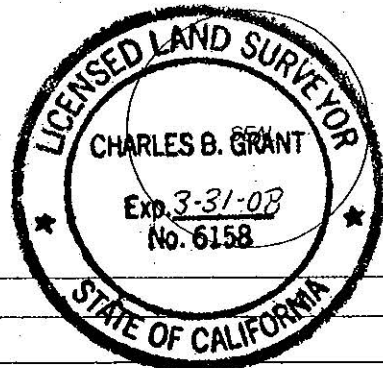
COUNTY SURVEYOR'S STATEMENT

This Corner Record was Received _____ 20____ and Examined

and filed Nov. 7 2006

Signed Charles B. Grant Title DEPUTY COUNTY SURVEYOR
LS 6158

County Surveyor's Comment _____



BOOK 10 CORNER RECORDS PAGE 70

Basis of Bearings

THE SOUTHWESTERLY LINE OF
 LOTS 4 & 5, MCKINNEY
 ESTATES UNIT NO. 1.
 BOOK "F" MAPS, PAGE 61
 BEARING
 S 67°14'E

(50' r.o.w.)
 S 48°14'00"W (R1)
 (85.63')(R1)
 S 85°70'(R1)
 McKinney Rubicon Springs Road

Wilson
 Book 2961, Page 556

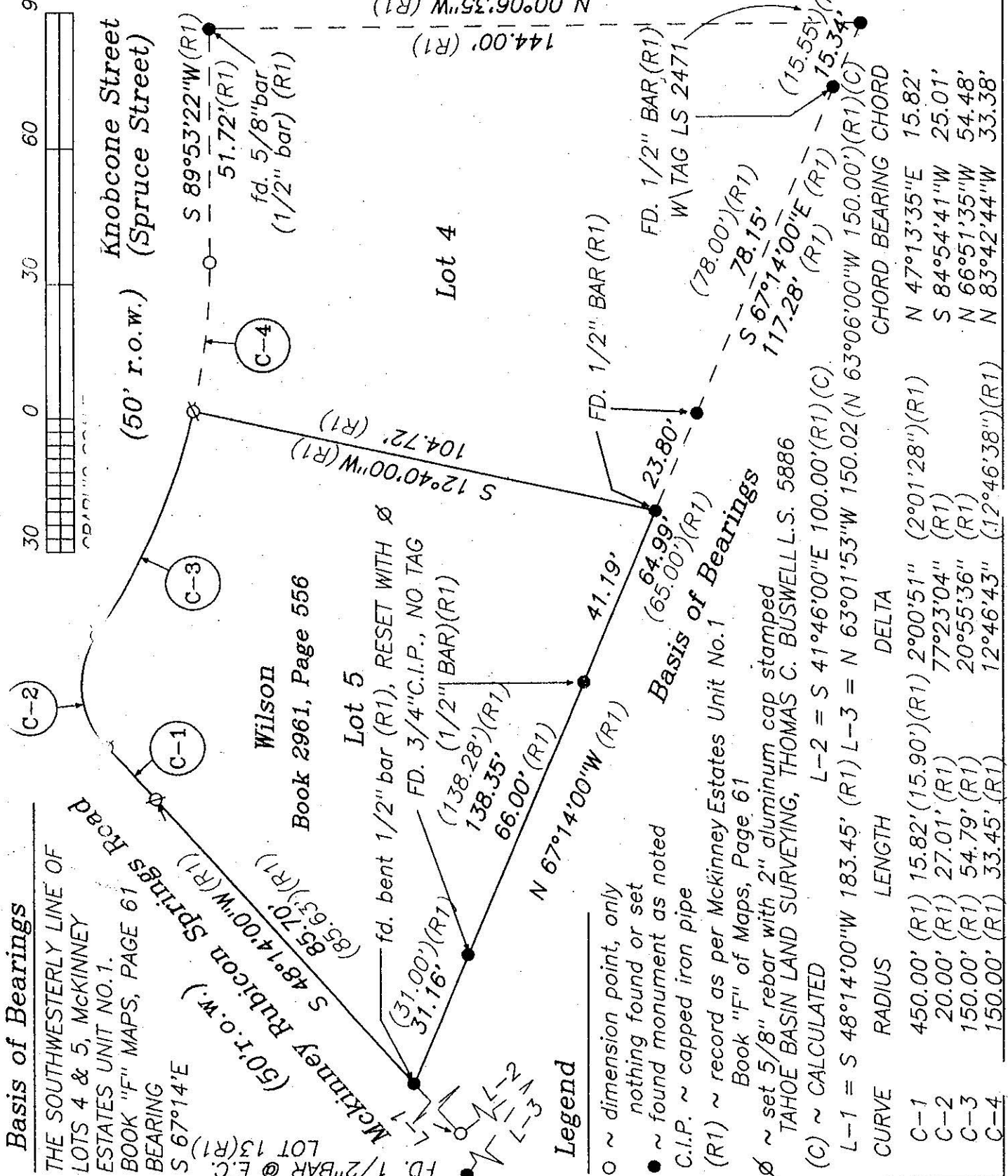
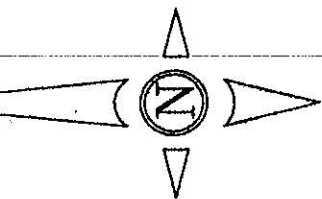
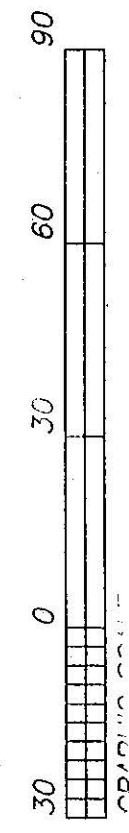
Lot 5
 fd. bent 1/2" bar (R1), RESET WITH Ø
 FD. 3/4"C.I.P., NO TAG
 (138.28')(R1)
 138.35'(R1)
 66.00'(R1)

Lot 4
 fd. 1/2" BAR (R1)
 W TAG LS 2471
 (78.00')(R1)
 S 67°14'00"E (R1)
 117.28'(R1)
 (15.55')(R1)
 15.34'(R1)

Knobcone Street
 (Spruce Street)

S 89°53'22"W (R1)
 51.72'(R1)
 fd. 5/8" bar
 (1/2" bar) (R1)

N 00°06'35"W (R1)
 144.00'(R1)



Legend

- ~ dimension point, only
- ~ nothing found or set
- ~ found monument as noted
- C.I.P. ~ capped iron pipe
- (R1) ~ record as per McKinney Estates Unit No. 1 Book "F" of Maps, Page 61
- Ø ~ set 5/8" rebar with 2" aluminum cap stamped TAHOE BASIN LAND SURVEYING, THOMAS C. BUSWELL L.S. 5886
- (C) ~ CALCULATED

L-2 = S 41°46'00"E 100.00'(R1)(C)
 L-1 = S 48°14'00"W 183.45' (R1) L-3 = N 63°01'53"W 150.02 (N 63°06'00"W 150.00')(R1)(C)

CURVE	RADIUS	LENGTH	DELTA
C-1	450.00' (R1)	15.82' (15.90')(R1)	2°00'51" (2°01'28")(R1)
C-2	20.00' (R1)	27.01' (R1)	77°23'04" (R1)
C-3	150.00' (R1)	54.79' (R1)	20°55'36" (R1)
C-4	150.00' (R1)	33.45' (R1)	12°46'43" (12°46'38")(R1)