

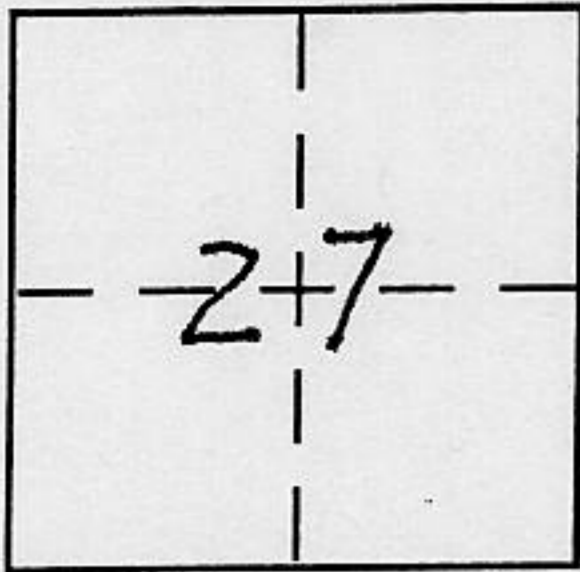
CORNER RECORD

Document Number _____

City of Penryn

County of Placer, California

Brief Legal Description SW 1/4 Section 27, T12N, R7E, MDM



CORNER TYPE

Government Corner Control
Meander Property
Rancho Other
Date of Survey 10-10-02

COORDINATES (Optional)

N. _____
E. _____
Zone _____ NAD27 NAD83
NAD83 Epoch _____
Elev. _____
Vert. Datum: NGVD29 NAVD88
Meas. Units: Metric Imperial

Corner - Left as found Found and tagged Established Reestablished Rebuilt

Identification and type of corner found: Evidence used to identify or procedure used to establish or reestablish the corner:

FOUND 3/4" IRON PIPE AT W 1/16 CORNER PER 17 RS 43.

FOUND 3/4" REBAR LS 5109 ON W. LINE SE 1/4 OF SW 1/4 PER 17 RS 43.

FOUND 2" CAPPED PIPE RCE 21478 STAMPED FOR S 1/4 CORNER PER 17 RS 43.

FOUND 1 1/4" PIPE LS 3333 ON E. LINE SW 1/4 PER 17 RS 43.

A description of the physical condition of the monument as found and as set or reset:

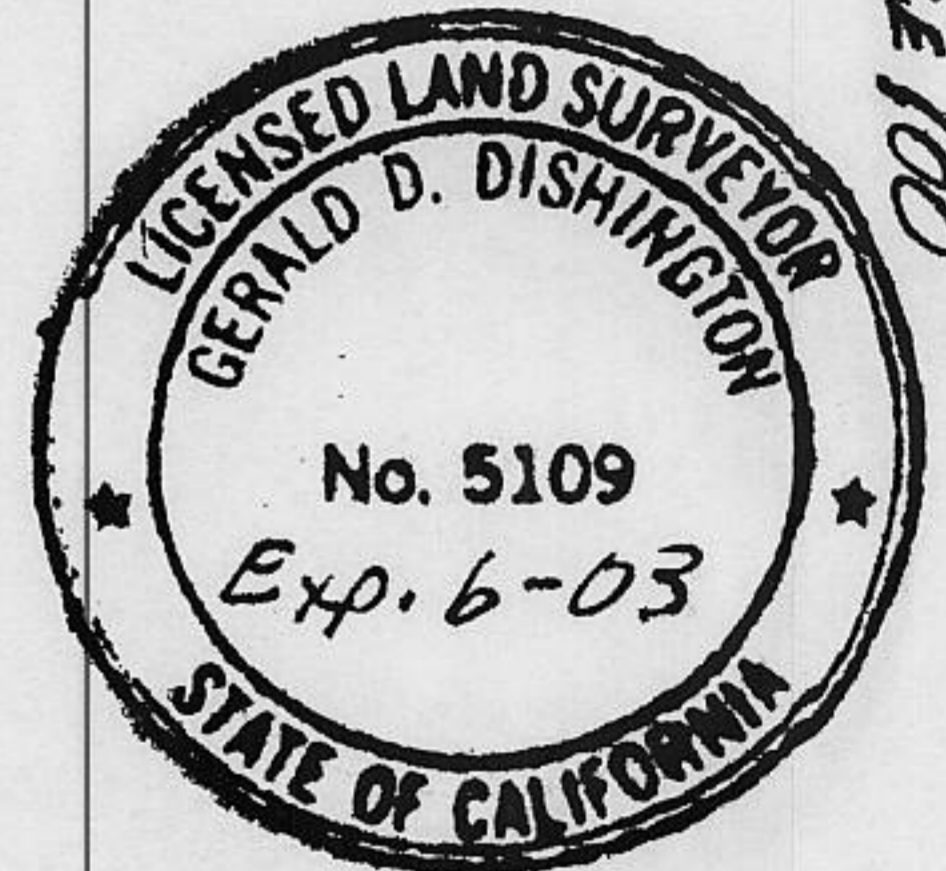
SET 3/4" REBAR W/ PLASTIC CAP STAMPED LS 5109 AS SHOWN ON SKETCH.

SURVEYOR'S STATEMENT

This Corner Record was prepared by me or under my direction in conformance with

the Land Surveyor's Act on OCTOBER 10, 2002

Signed Gerald D. Dishington P.L.S or R.C.E. No. PLS 5109



COUNTY SURVEYOR'S STATEMENT

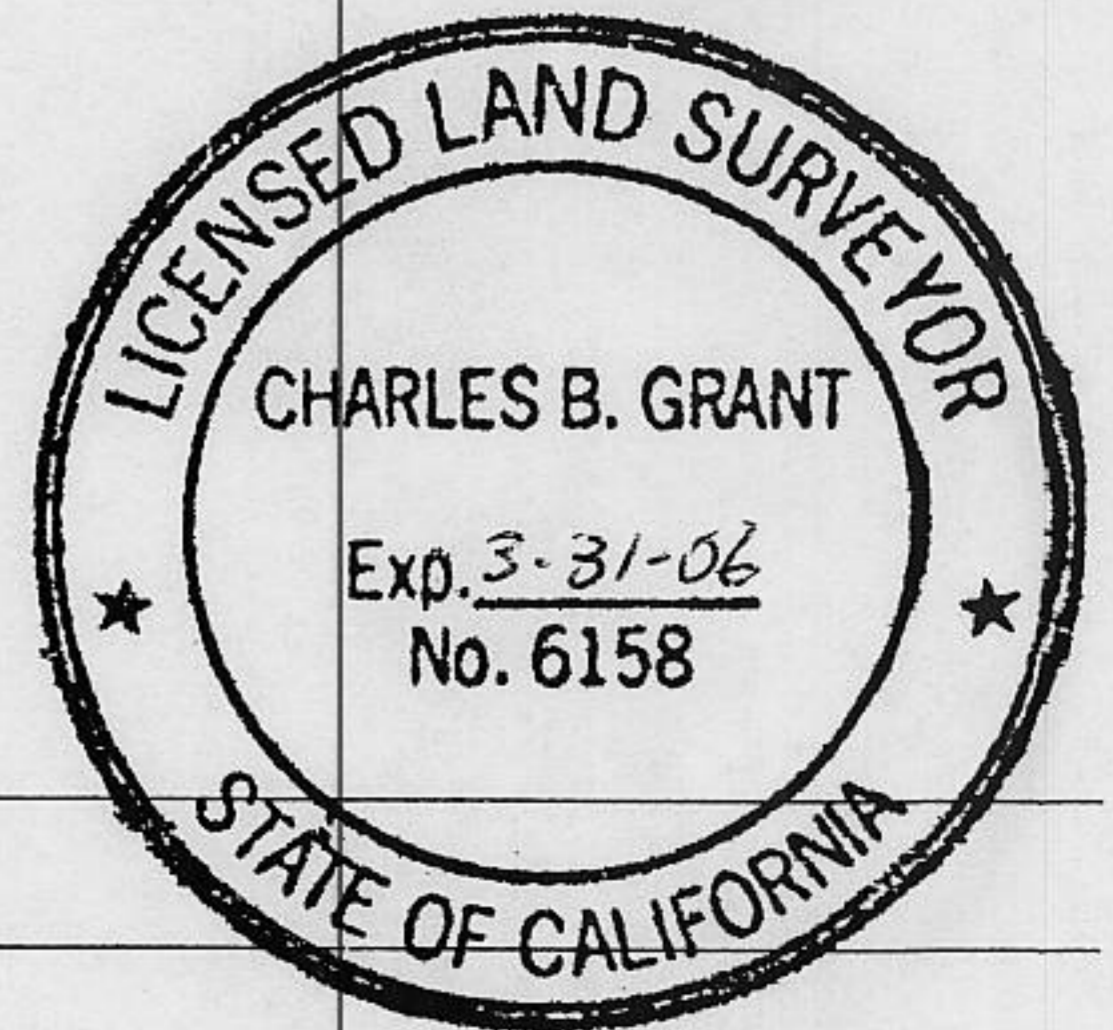
This Corner Record was received JULY 15, 2003

and examined and filed JULY 18, 2003

Signed Charles B. Grant P.L.S or R.C.E. No. LS 6158

Title DEPUTY COUNTY SURVEYOR

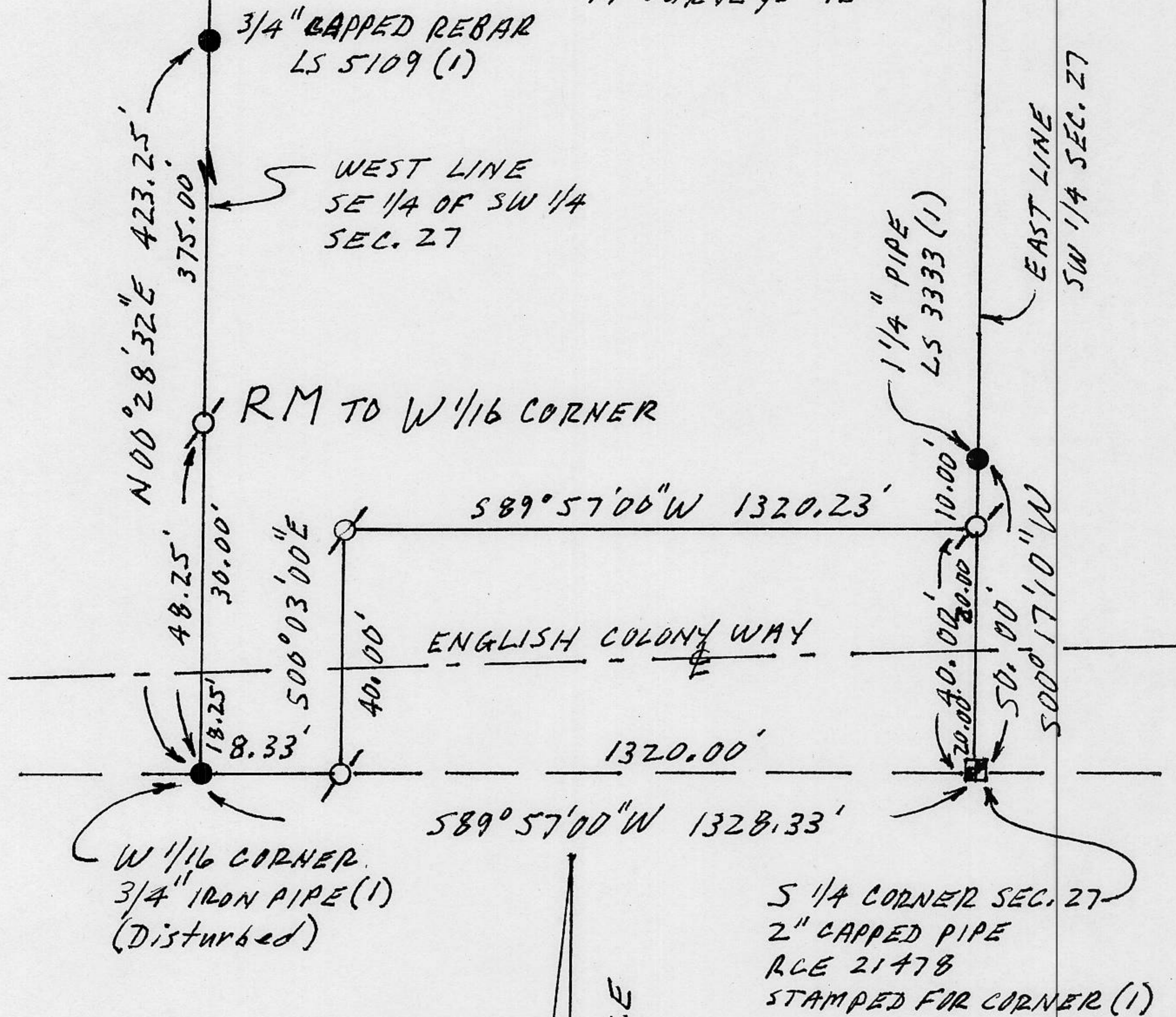
County Surveyor's Comment _____



BOOK 7 CORNER RECORDS PAGE 100

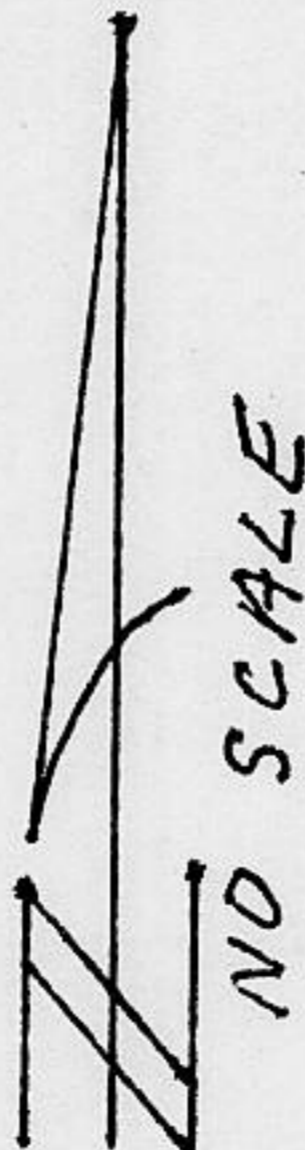
A PORTION OF SECTION 27
T 12 N, R 7 E, M 11 W

RECORD OF SURVEY NO. 2357
17 SURVEYS 43



LEGEND

- FOUND 1/4 CORNER (1)
- FOUND MONUMENT (1)
- ⊙ SET 3/4" CAPPED REBAR STAMPED LS 5109
- (1) RECORD PER 17 SURVEYS 43
- RM REFERENCE MONUMENT



ALLIED-LANGDON ENGINEERING
PLACER COUNTY, CALIFORNIA
OCTOBER 10, 2002 NO SCALE

010020