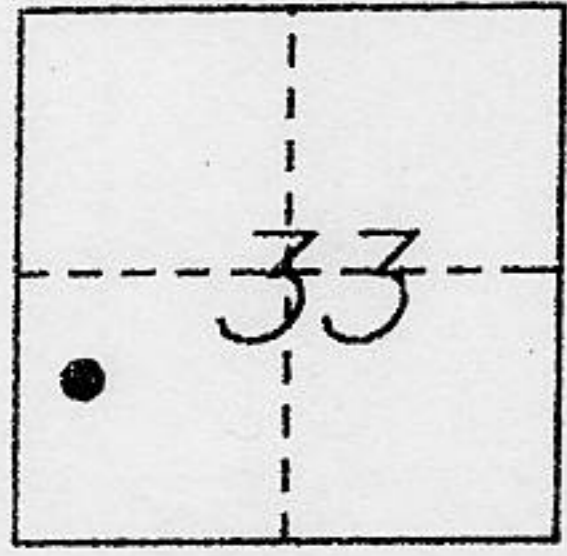


CORNER RECORD

COUNTY OF PLACER, CALIFORNIA

City of \_\_\_\_\_ Document Number \_\_\_\_\_

Brief Legal Description LOT 112, DOLLAR POINT UNIT NO. 2 "G" MAPS, PAGE 7



T. 16N., R.17E., CORNER TYPE

COORDINATES (Optional)

Government Corner  Control  N. \_\_\_\_\_  
 Meander  Property  E. \_\_\_\_\_  
 Rancho  Other  Zone \_\_\_\_\_ Datum \_\_\_\_\_  
 Date of Survey \_\_\_\_\_ Elev. \_\_\_\_\_

Corner— Left as found  Found and tagged  Established  Reestablished  Rebuilt

Identification and type of corner found; Evidence used to identify or procedure used to establish or reestablish corner:

● FD. 1/2" PIN UNLESS OTHERWISE NOTED

A description of the physical condition of the monument as found and as set or reset:

Q SET 5/8" REBAR WITH 2" ALUMINUM CAP  
STAMPED "TAHOE BASIN LAND SURVEYING" LS 5886

SURVEYOR'S STATEMENT

This Corner Record was prepared by me or under my direction in conformance with the Land

Surveyor's Act on JUNE 2000

Signed [Signature] L.S. or R.C.E. Number LS 5886



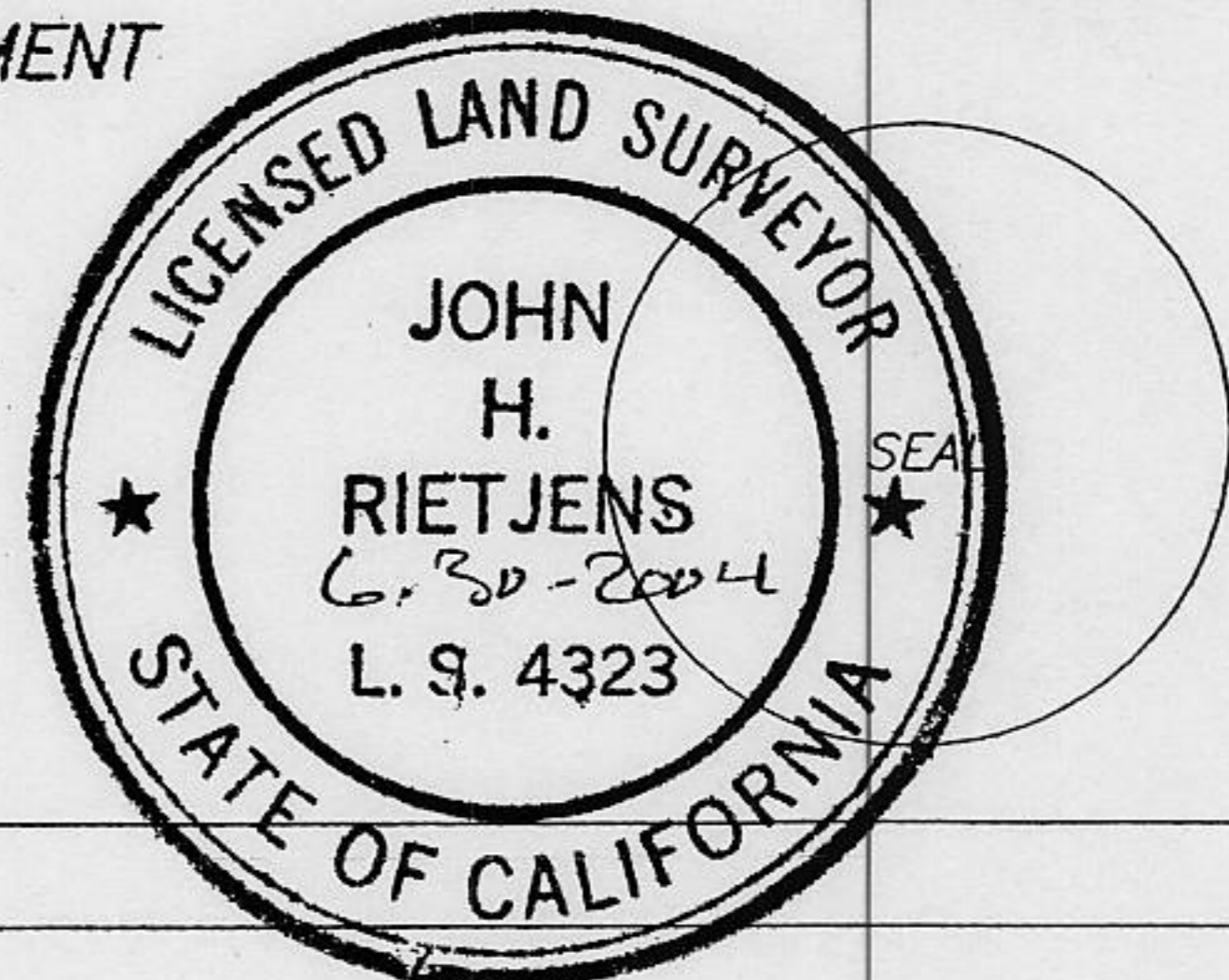
COUNTY SURVEYOR'S STATEMENT

This Corner Record was Received AUGUST 18 2000 and Examined

and Filed MAY 23 2001

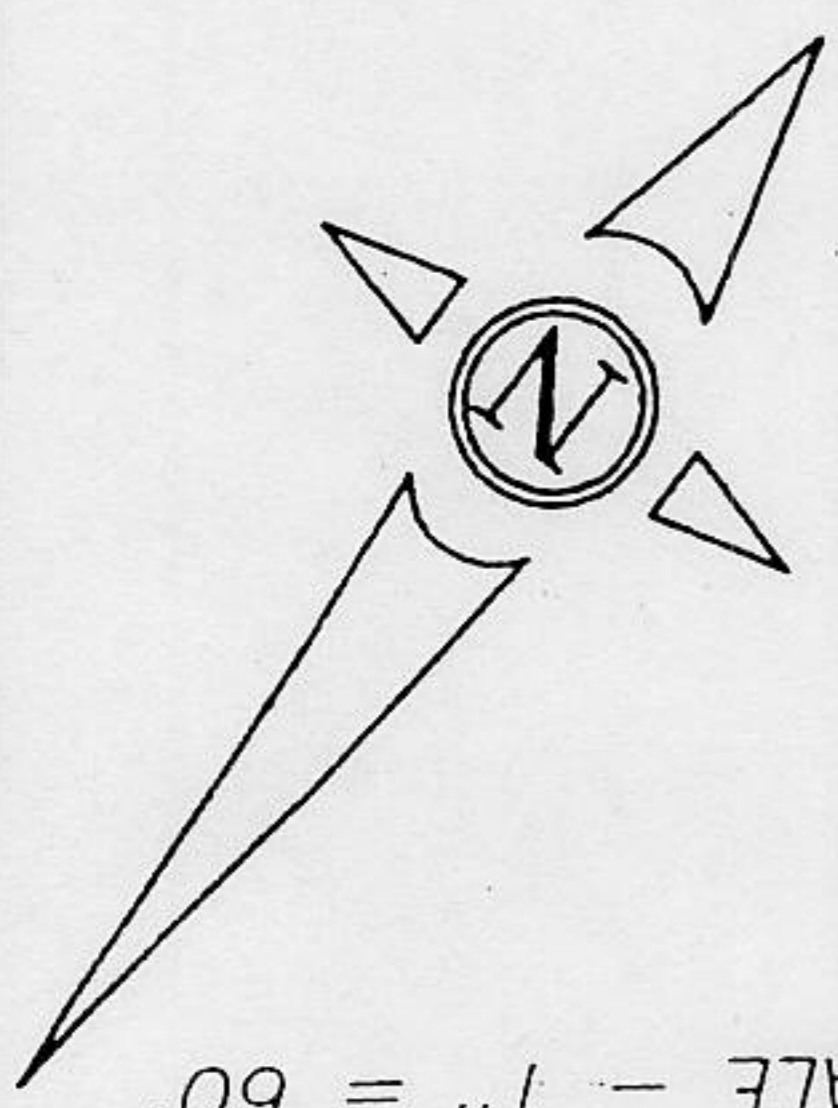
Signed [Signature] Title C.S. SURVEYOR

County Surveyor's Comment \_\_\_\_\_



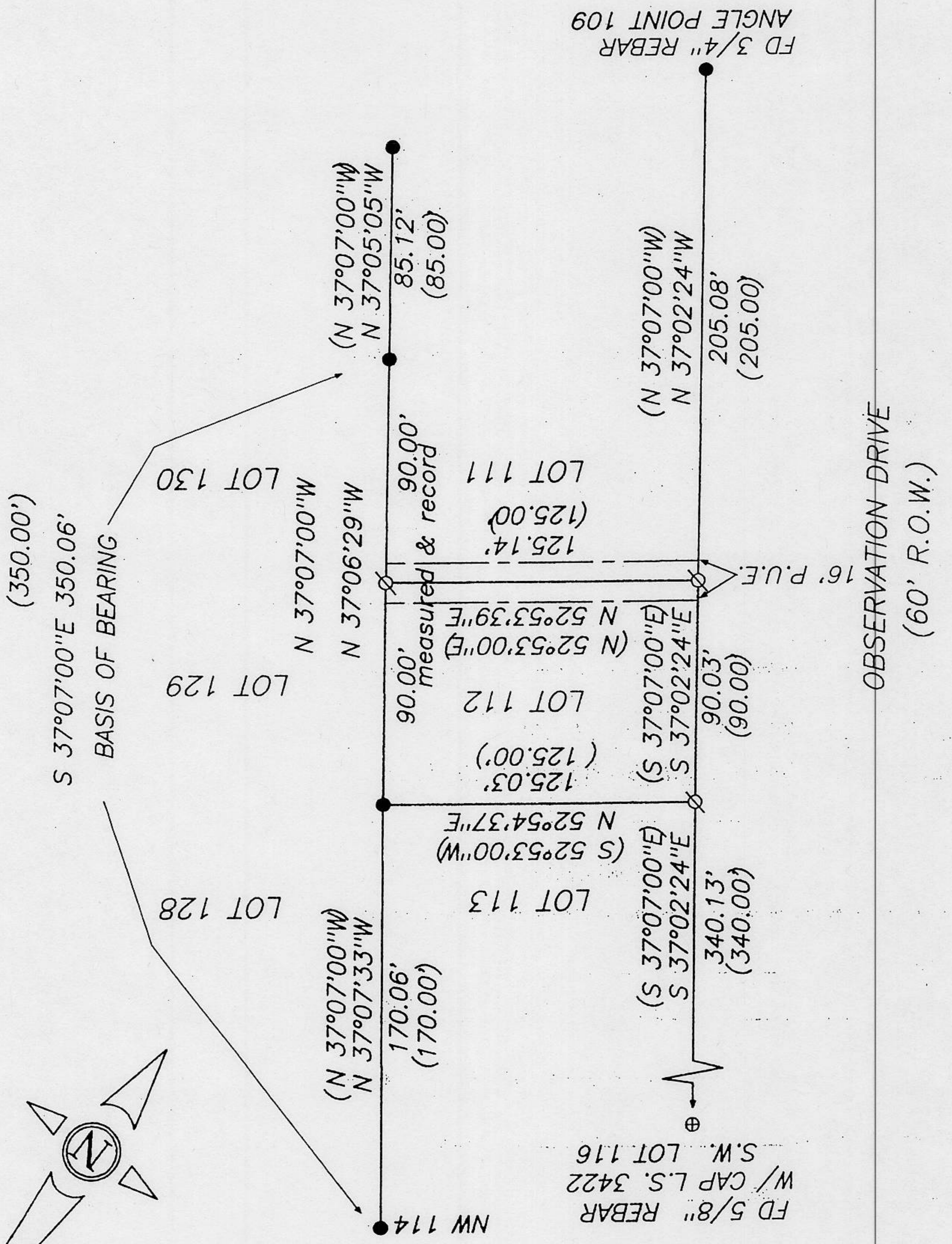
BOOK 7 CORNER RECORDS PAGE 4

J.N. 2010 CRD & C2010 PL



SCALE - 1" = 60'

( ) DENOTES RECORD PER G MAPS 7



FD 5/8" REBAR  
W/CAP L.S. 3422  
S.W. LOT 116

FD 3/4" REBAR  
ANGLE POINT 109

OBSERVATION DRIVE  
(60' R.O.W.)

BASIS OF BEARING