

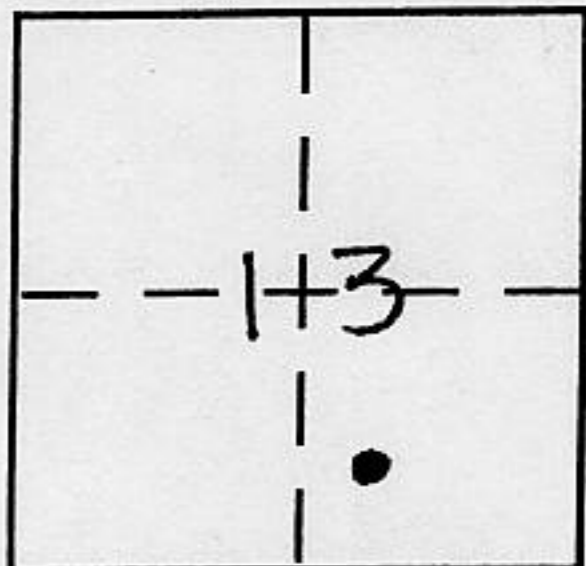
CORNER RECORD

Document Number _____

City of Tahoe City

County of Placer, California

Brief Legal Description Lot 15, Block M, Amended Map of Lake Tahoe Park
Subdivision No. 1 D/Maps/17 ORPC



CORNER TYPE

Government Corner Control
Meander Property
Rancho Other
Date of Survey 9/17/01

COORDINATES (Optional)

N. _____
E. _____
Zone _____ NAD27 NAD83
NAD83 Epoch _____
Elev. _____
Vert. Datum: NGVD29 NAVD88
Meas. Units: Metric Imperial

Corner - Left as found Found and tagged Established Reestablished Rebuilt

Identification and type of corner found: Evidence used to identify or procedure used to establish or reestablish the corner:

(See sketch on back)

A description of the physical condition of the monument as found and as set or reset:

(See sketch on back)

SURVEYOR'S STATEMENT

This Corner Record was prepared by me or under my direction in conformance with the Land Surveyor's Act on September 19 2001

Signed [Signature] RLS or R.C.E. No. 3422



COUNTY SURVEYOR'S STATEMENT

This Corner Record was received September 24, 2001

and examined and filed JAN 10, 2002

Signed [Signature] P.L.S or R.C.E. No. 4323

Title COUNTY SURVEYOR

County Surveyor's Comment _____



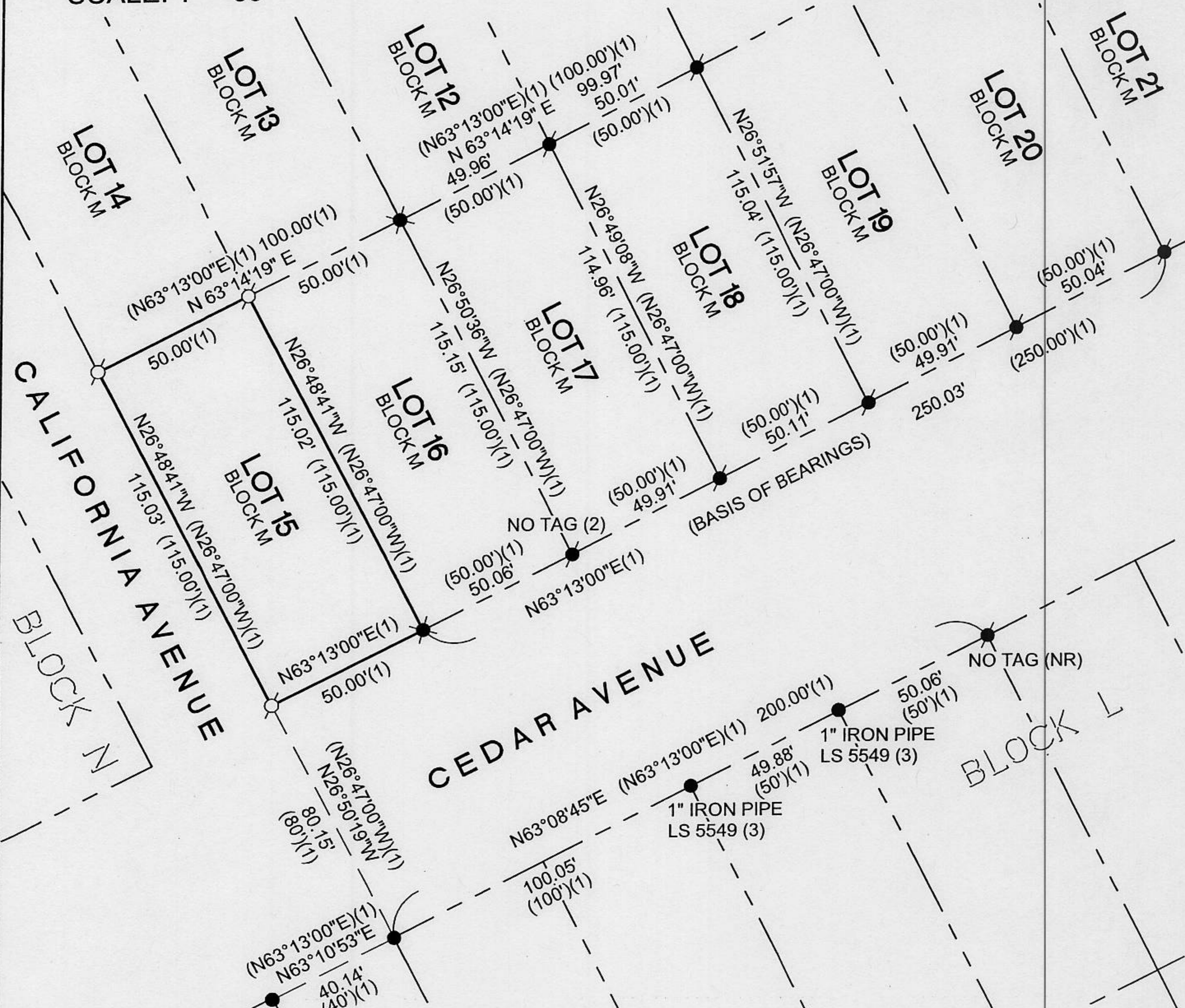
BOOK 7 CORNER RECORDS PAGE 16

PLAT OF SURVEY

LOT 15, BLOCK M, LAKE TAHOE PARK SUBDIVISION NO. 1, FILED IN D/MAPS/17, O.R.P.C.
 LOCATED IN SECTION 13, TOWNSHIP 17 NORTH, RANGE 16 EAST, M.D.M.

COUNTY OF PLACER
 SCALE: 1" = 50'

CALIFORNIA
 SEPTEMBER 18, 2001



- SET: 5/8" REBAR, WITH PLASTIC CAP, LS #3422
- FOUND: 5/8" REBAR, LS 5886, PER (2), OR AS NOTED
- ⊗ FOUND: 1/2" REBAR, NO TAG
- FOUND: IRON PIPE, AS NOTED
- (1) RECORD PER D/MAPS/17, O.R.P.C.
- (2) RECORD PER 2/CORNER RECORDS/43
- (3) RECORD PER 5/CORNER RECORDS/3
- (NR) NO REFERENCE FOUND

NOTES:
 1) FROM THE EXISTING MONUMENTATION FOUND IN THIS SUBDIVISION, WE DETERMINED THAT A MATERIAL DISCREPANCY WOULD BE ANYTHING VARYING OVER 0.15' FROM RECORD DISTANCE, WHICH NONE OF THE MONUMENTS SHOWN ON THIS PLAT DO.
 2) MONUMENTS SHOWN IN BLOCK L, ARE FOR REFERENCE ONLY, AND WERE NOT USED IN THIS RESOLUTION.



J/N - 872.01

BOOK 7 CORNER RECORDS PAGE 16