



PLACER, County Recorder
RYAN RONCO
DOC- 2020-0128987-00

TUESDAY, NOV 10, 2020 10:13 AM
MIC \$3.00 | AUT \$0.00 | SBS \$0.00
ERD \$0.00 | SB2 \$0.00 | MAP \$5.00
ADD \$0.00

RECORDING REQUESTED BY:

Ttl Pd \$8.00 Rcpt # 02958227
CLKBZMJ9T2/TN/1-1

Community Development Resource Center

TYPE OF MAP: Community Facilities District Map

BOOK: 4 PAGE: 7

NAME: Community Facilities District No. 2018-2
Placer Vineyards – County Services
Consolidated Boundary Map
County of Placer

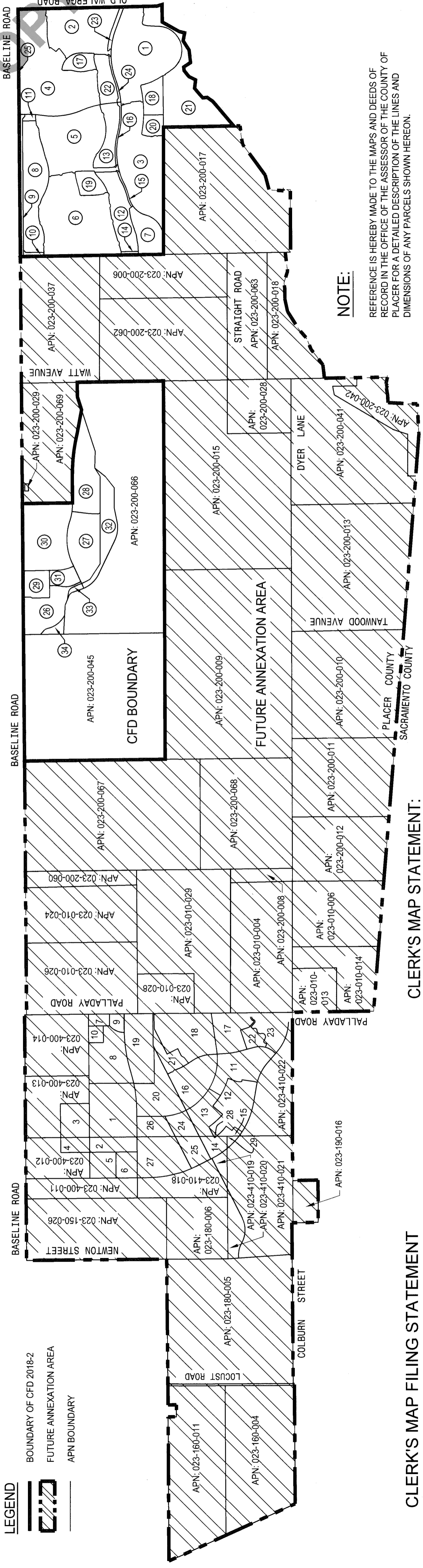
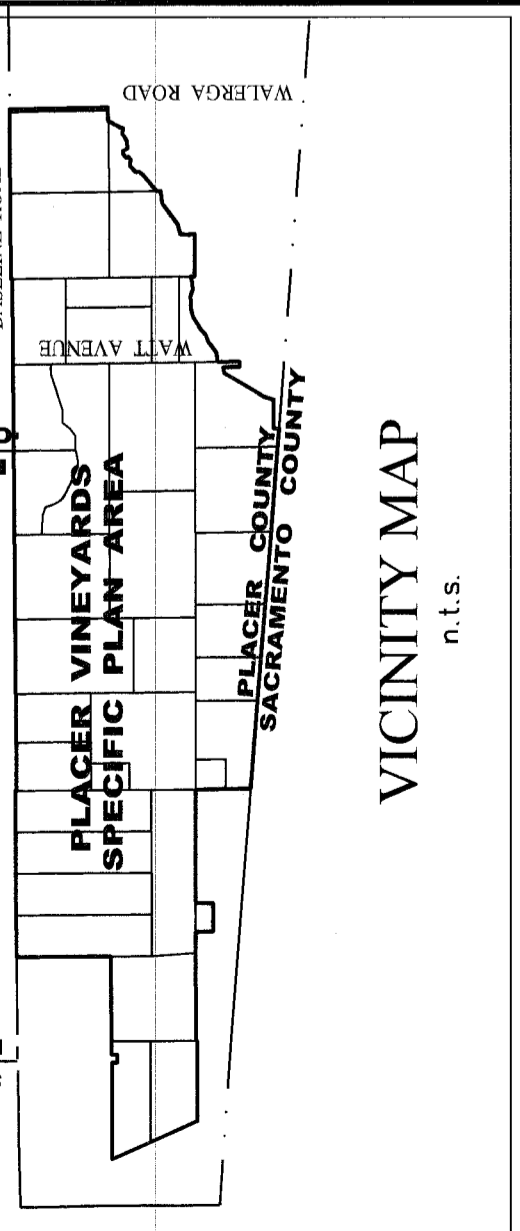
REFERENCE TO RECORDED MAP: BOOK 3 Page 81

NO. OF SHEETS: 1

CFD BOUNDARY APNS	
023-200-045	(14) 023-420-014 (29) 023-390-004
023-200-066	(15) 023-420-015 (30) 023-390-005
(1) 023-420-001	(16) 023-420-016 (31) 023-390-006
(2) 023-420-002	(17) 023-420-017 (32) 023-390-007
(3) 023-420-003	(18) 023-420-018 (33) 023-390-008
(4) 023-420-004	(19) 023-420-019 (34) 023-390-009
(5) 023-420-005	(20) 023-420-020
(6) 023-420-006	(21) 023-420-021
(7) 023-420-007	(22) 023-420-022
(8) 023-420-008	(23) 023-420-023
(9) 023-420-009	(24) 023-420-024
(10) 023-420-010	(25) 023-420-025
(11) 023-420-011	(26) 023-390-001
(12) 023-420-012	(27) 023-390-002
(13) 023-420-013	(28) 023-390-003

**CONSOLIDATED BOUNDARY MAP
OF COUNTY OF PLACER
COMMUNITY FACILITIES DISTRICT NO. 2018-2
(PLACER VINEYARDS - COUNTY SERVICES)
COUNTY OF PLACER • STATE OF CALIFORNIA
SEPTEMBER 2020**

FUTURE ANNEXATION AREA APNS				
1: 023-400-001	16: 023-410-006	023-200-006	023-200-012	023-410-019
2: 023-400-002	17: 023-410-007	023-200-037	023-200-067	023-410-020
3: 023-400-003	18: 023-410-008	023-200-062	023-200-060	023-410-021
4: 023-400-004	19: 023-410-009	023-200-063	023-200-024	023-410-022
5: 023-400-005	20: 023-410-010	023-200-018	023-200-026	023-180-006
6: 023-400-006	21: 023-410-011	023-200-028	023-200-004	023-150-026
7: 023-400-007	22: 023-410-012	023-200-029	023-200-008	023-180-005
8: 023-400-008	23: 023-410-013	023-200-069	023-200-013	023-160-011
9: 023-400-009	24: 023-410-014	023-200-015	023-200-014	023-160-004
10: 023-400-010	25: 023-410-015	023-200-041	023-200-006	023-200-042
11: 023-410-001	26: 023-410-016	023-200-013	023-400-014	023-010-028
12: 023-410-002	27: 023-410-017	023-200-009	023-400-013	023-010-029
13: 023-410-003	28: 023-410-023	023-200-010	023-400-012	
14: 023-410-004	29: 023-410-024	023-200-011	023-400-011	
15: 023-410-005	023-200-017	023-200-068	023-410-018	



FILED IN THE OFFICE OF THE CLERK OF THE BOARD OF SUPERVISORS OF THE COUNTY OF PLACER THIS 21st DAY OF October, 2020.

Morgan Ward
CLERK

CLERK'S MAP FILING STATEMENT

CLERK'S MAP STATEMENT:

THIS CONSOLIDATED BOUNDARY MAP REFLECTS THE ANNEXATION OF CERTAIN PARCELS FROM THE FUTURE ANNEXATION AREA INTO COUNTY OF PLACER COMMUNITY FACILITIES DISTRICT NO. 2018-2 (PLACER VINEYARDS - COUNTY SERVICES), COUNTY OF PLACER, STATE OF CALIFORNIA. THIS CONSOLIDATED BOUNDARY MAP SUPERSEDES THE MAP ENTITLED "PROPOSED BOUNDARIES AND FUTURE ANNEXATION AREA OF COUNTY OF PLACER COMMUNITY FACILITIES DISTRICT NO. 2018-2 (PLACER VINEYARDS - COUNTY SERVICES), COUNTY OF PLACER, STATE OF CALIFORNIA" RECORDED ON THE 20TH DAY OF NOVEMBER, 2018, AT THE HOUR OF 2:32 O'CLOCK P.M., IN BOOK 3 OF MAPS OF COMMUNITY FACILITIES DISTRICTS AT PAGE 81 IN THE OFFICE OF THE COUNTY RECORDER IN THE COUNTY OF PLACER, STATE OF CALIFORNIA.

CLERK'S MAP CERTIFICATE

I HEREBY CERTIFY THAT THE WITHIN CONSOLIDATED BOUNDARY MAP AND THE FUTURE ANNEXATION AREA OF COUNTY OF PLACER COMMUNITY FACILITIES DISTRICT NO. 2018-2 (PLACER VINEYARDS - COUNTY SERVICES), COUNTY OF PLACER, STATE OF CALIFORNIA, WAS APPROVED BY THE BOARD OF SUPERVISORS OF THE COUNTY OF PLACER, AT A MEETING THEREOF, HELD ON THE 21st DAY OF October, 2020, BY ITS RESOLUTION NO. 2020-208.

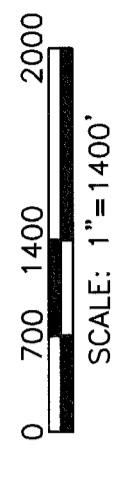
Morgan Ward
CLERK

RECORDER'S STATEMENT

FILED THIS 10th DAY OF November, 2020, AT THE HOUR OF 10:13 O'CLOCK A.M., IN BOOK 4 OF MAPS OF COMMUNITY FACILITIES DISTRICTS AT PAGE 7 IN THE OFFICE OF THE COUNTY RECORDER IN THE COUNTY OF PLACER, STATE OF CALIFORNIA.

FEE \$ 8.00
FILE NO. 2020-0128997 RYAN RONCO
PLACER COUNTY RECORDER

[Signature]
DEPUTY



NOTE:

REFERENCE IS HEREBY MADE TO THE MAPS AND DEEDS OF RECORD IN THE OFFICE OF THE ASSESSOR OF THE COUNTY OF PLACER FOR A DETAILED DESCRIPTION OF THE LINES AND DIMENSIONS OF ANY PARCELS SHOWN HEREON.

MACKAY & SOMPS
ENGINEERS PLANNERS SURVEYORS
1552 Eureka Road, Suite 100, Roseville, CA 95661 (916) 773-1189