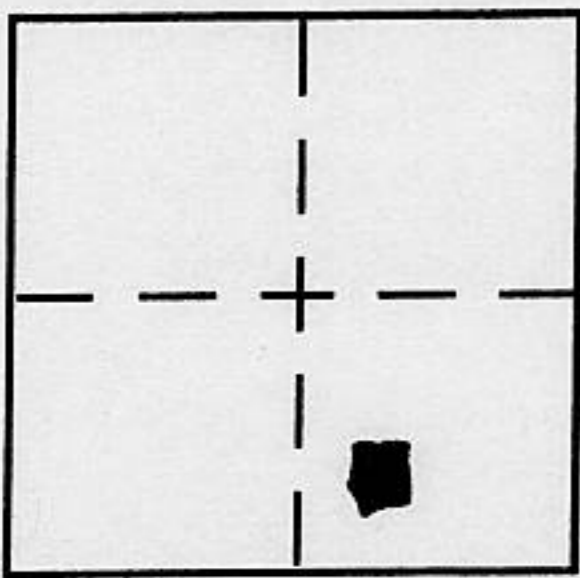


CORNER RECORD

Document Number _____

City of _____ County of Placer, California

Brief Legal Description Lot 113 Kingswood Estates Unit No 1 I/MAPS/11 O.R.P.C.



SEC. 12
T. 16, N
R. 17, E.
M.D.B. & M.
CORNER TYPE
Government Corner Control
Meander Property
Rancho Other
Date of Survey 7/18/2001

COORDINATES (Optional)
N _____
E. _____
Zone _____ NAD27 NAD83
NAD83 Epoch _____
Elev. _____
Vert. Datum: NGVD29 NAVD88
Meas. Units: Metric Imperial

Corner - Left as found Found and tagged Established Reestablished Rebuilt

Identification and type of corner found: Evidence used to identify or procedure used to establish or reestablish the corner:

See sketch on Back

A description of the physical condition of the monument as found and as set or reset:

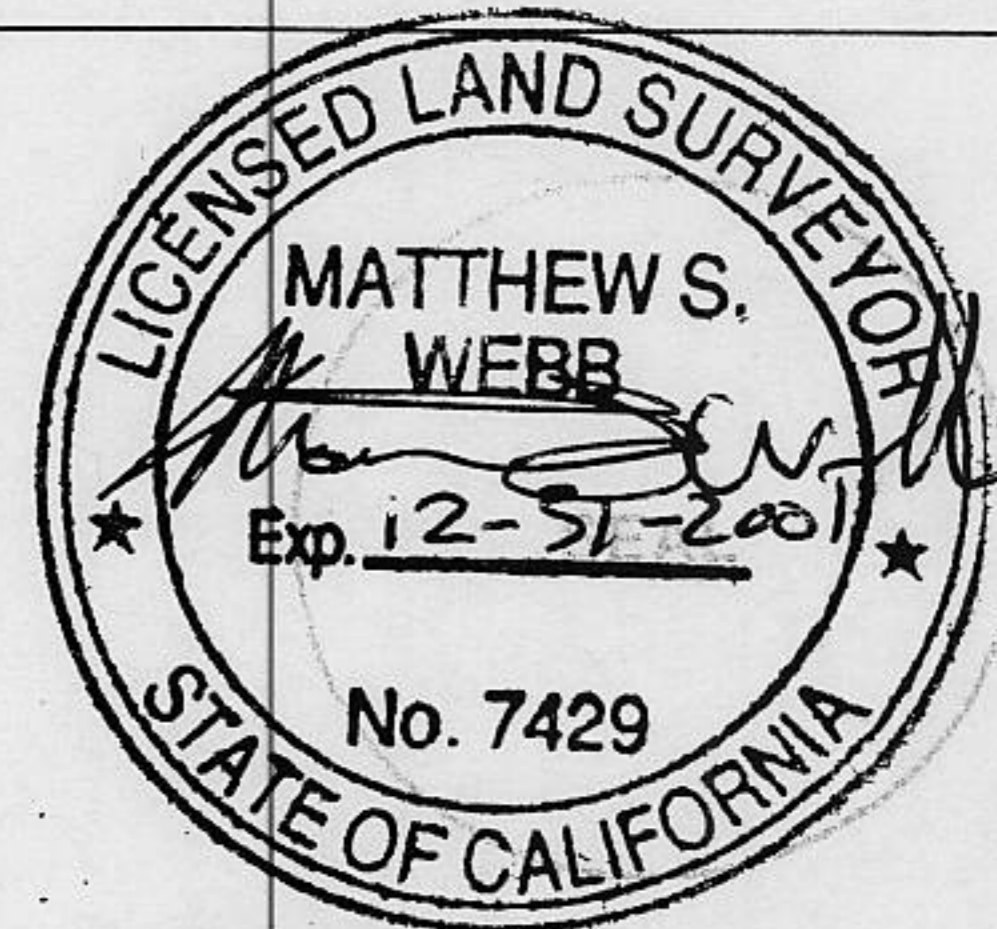
See sketch on Back

SURVEYOR'S STATEMENT

This Corner Record was prepared by me or under my direction in conformance with

the Land Surveyor's Act on August 22, 2001

Signed Matthew S. Webb P.L.S. or R.C.E. No. 7429



COUNTY SURVEYOR'S STATEMENT

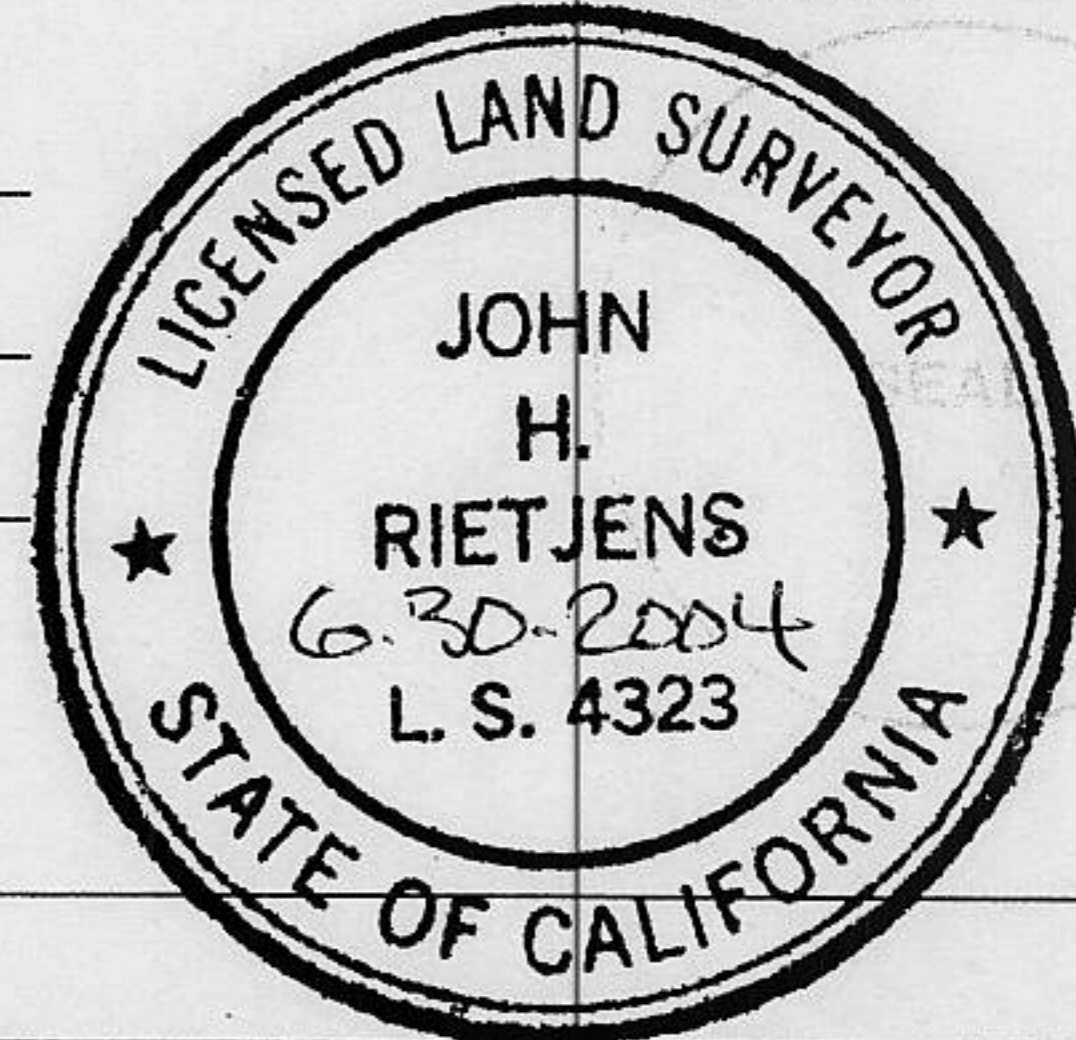
This Corner Record was received September 7, 2001

and examined and filed March 12, 2002

Signed John H. Rietsjens P.L.S. or R.C.E. No. 4323

Title County Surveyor

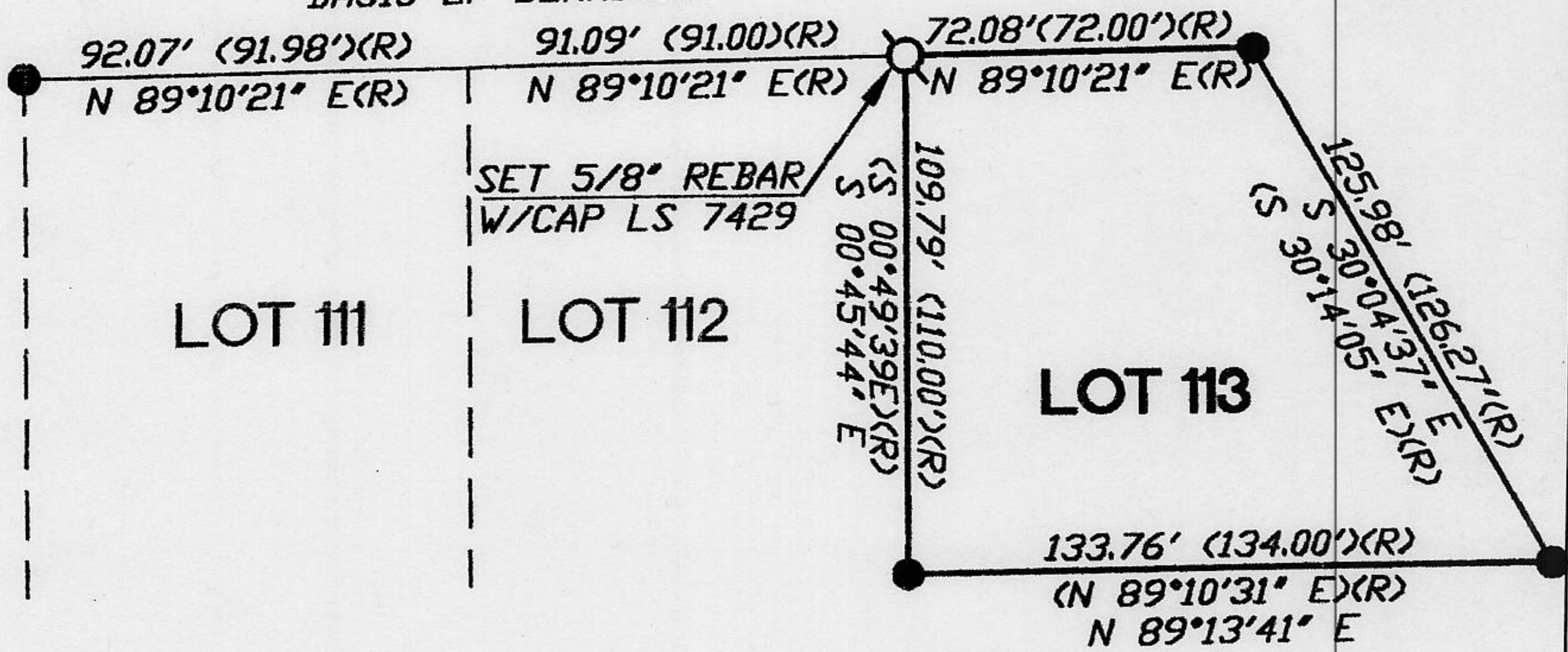
County Surveyor's Comment _____



BOOK 7 CORNER RECORDS PAGE 28

LINCOLN GREEN DRIVE

BASIS OF BEARINGS

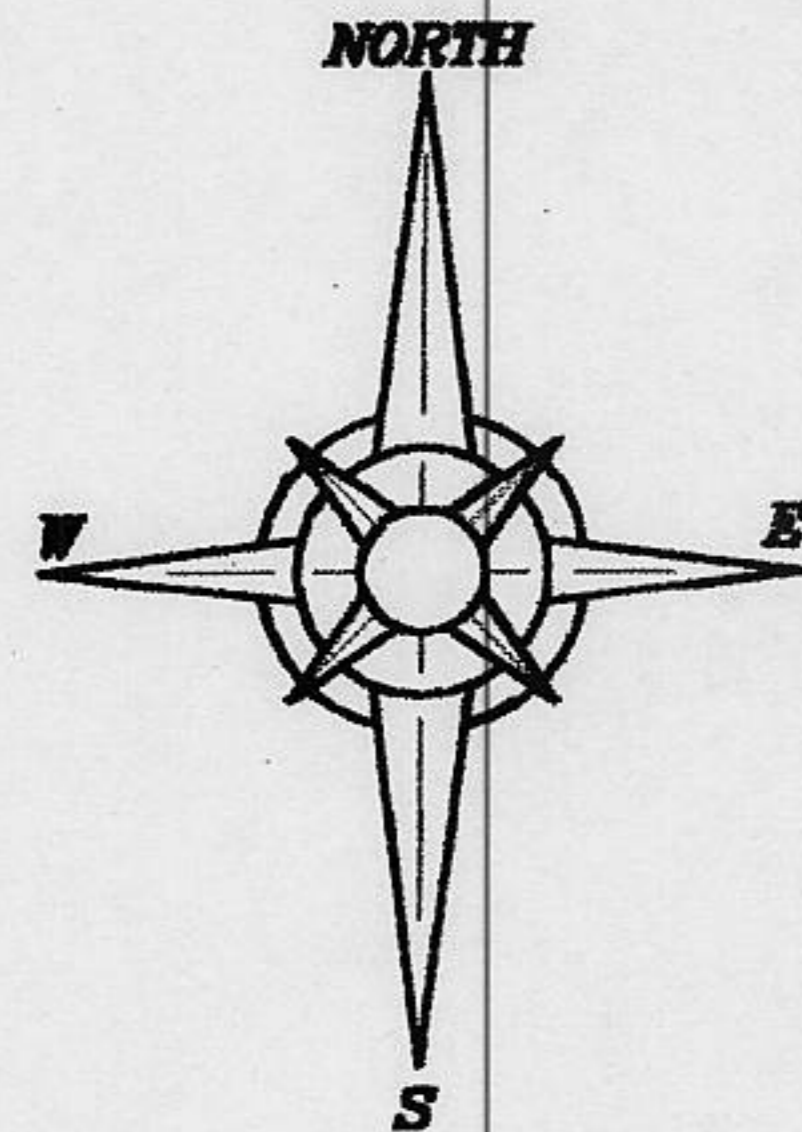


(R) RECORD INFORMATION PER I/MAPS/11 O.R.P.C.

● FOUND 1/2" REBAR ORIGINAL MONUMENT
PER I/MAPS/11 O.R.P.C.

PLAT OF SURVEY

LOT 113 KINGSWOOD ESTATES UNIT No. 1
BOOK I, OF MAPS, PAGE 11, OFFICIAL RECORDS
PLACER COUNTY CALIFORNIA, SECTION 12,
TOWNSHIP 16, N., RANGE 17, E., M.D.B.&M
SCALE 1" = 50' DATE OF SURVEY 7/18/2001



BOOK 7 CORNER RECORDS PAGE 28