

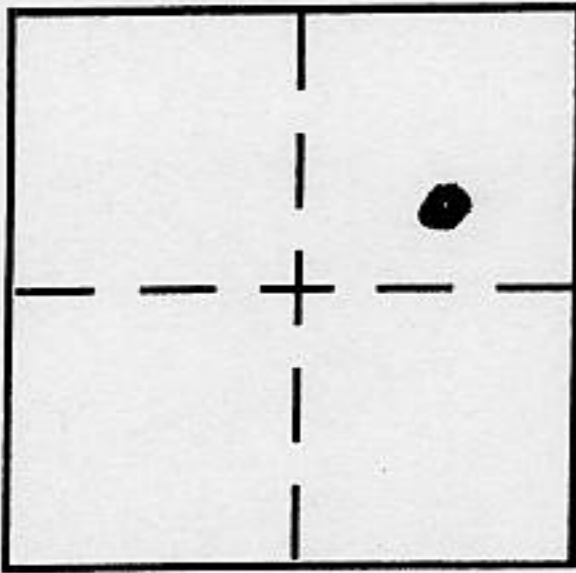
CORNER RECORD

Document Number _____

City of _____

County of PLACER, California

Brief Legal Description LOT 23 BLOCK "G" ICE LAKES SUB. NO. 2
BOOK "G" OF MAPS PAGE 1 P.C.R.



SEC. 27
T. 17 N.
R. 14 E.
M.D.M.

CORNER TYPE

Government Corner Control
Meander Property
Rancho Other
Date of Survey 6-12-01

COORDINATES (Optional)

N. _____
E. _____
Zone _____ NAD27 NAD83
NAD83 Epoch _____
Elev. _____
Vert. Datum: NGVD29 NAVD88
Meas. Units: Metric Imperial

Corner - Left as found Found and tagged Established Reestablished Rebuilt

Identification and type of corner found: Evidence used to identify or procedure used to establish or reestablish the corner:

- = FOUND ORIGINAL 2x2 WOOD HUB, PER "G" MAPS / 1 ^{w/ TAG L.S. 2089}
- = FOUND 3/4" IRON PIPE w/ PLASTIC PLUG, L.S. 5549
- = FOUND 1/2" REBAR, NO TAG
- = FOUND 3/4" OPEN IRON PIPE, NO TAG
- = FOUND RAIL ROAD SPIKE, NO TAG

A description of the physical condition of the monument as found and as set or reset:

- = SET 3/4" IRON PIPE w/ PLASTIC PLUG L.S. 5549
- = FOUND ORIGINAL 2x2 WOOD HUB, REPLACED w/ 3/4" I.P. L.S. 5549

JN. 01089

SURVEYOR'S STATEMENT

This Corner Record was prepared by me or under my direction in conformance with the Land Surveyor's Act on JUNE 18 2001

Signed Charles R. Sage P.L.S or R.C.E. No. L.S. 5549
LIC. EXP. 6-30-05

COUNTY SURVEYOR'S STATEMENT

This Corner Record was received July 9, 2001

and examined and filed March 14, 2002

Signed John H. Rietjens P.L.S or R.C.E. No. 4323

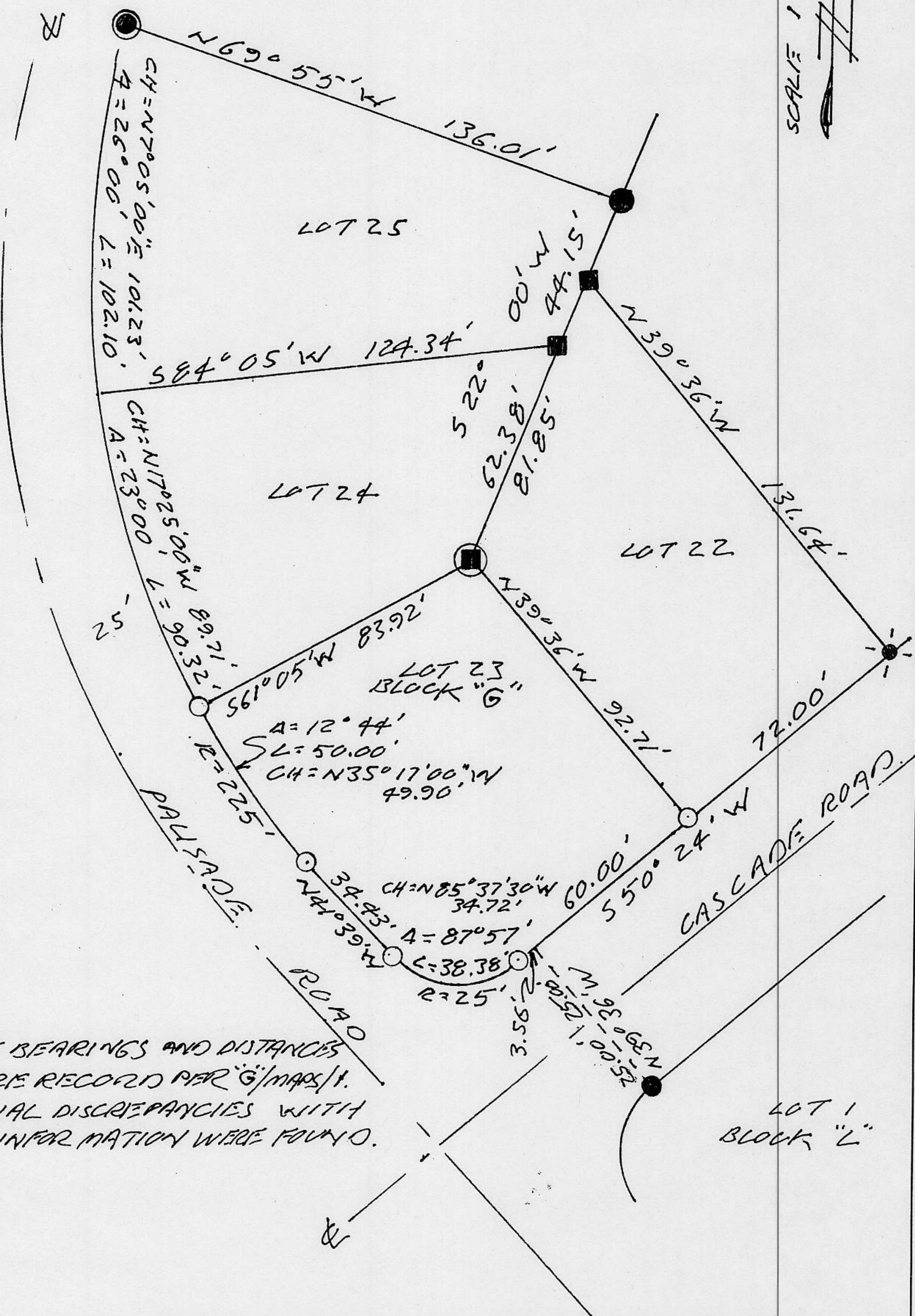
Title COUNTY SURVEYOR

County Surveyor's Comment _____



BOOK 7 CORNER RECORDS PAGE 40

SCALE = 1" = 40'



NOTE: THE BEARINGS AND DISTANCES SHOWN ARE RECORD PER G/MAPS/1. NO MATERIAL DISCREPANCIES WITH RECORD INFORMATION WERE FOUND.

BOOK 7 CORNER RECORDS PAGE 4b