

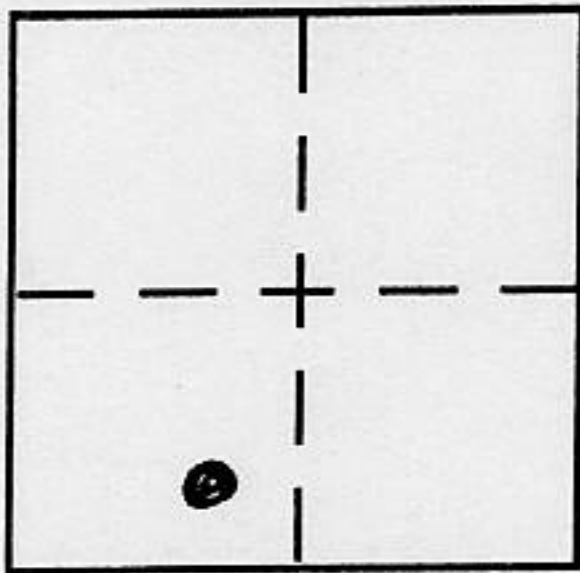
**CORNER RECORD**

Document Number \_\_\_\_\_

City of UNINCORPORATED AREA

County of PLACER, California

Brief Legal Description LOT 39 HOMESITES AT SQUAW CREEK  
BOOK "R" OF MAPS PAGE 15 P.C.R.



SEC. 28  
T. 16 N.  
R. 16 E.  
M.D.M.

**CORNER TYPE**

Government Corner  Control   
Meander  Property   
Rancho  Other   
Date of Survey 5-07-01

**COORDINATES (Optional)**

N. \_\_\_\_\_  
E. \_\_\_\_\_  
Zone \_\_\_\_\_ NAD27  NAD83   
NAD83 Epoch \_\_\_\_\_  
Elev. \_\_\_\_\_  
Vert. Datum: NGVD29  NAVD88   
Meas. Units: Metric  Imperial

Corner - Left as found  Found and tagged  Established  Reestablished  Rebuilt

Identification and type of corner found: Evidence used to identify or procedure used to establish or reestablish the corner:

● = FOUND 3/4" REBAR w/PLASTIC CAP, L.S. 4976, PER "R"/MAPS/15.  
● = FOUND RAILROAD SPIKE @ E.B.C., PER "R"/MAPS/15.

A description of the physical condition of the monument as found and as set or reset:

○ = SET 3/4" IRON PIPE w/PLASTIC PLUG L.S. 5549

T.N. 01021

**SURVEYOR'S STATEMENT**

This Corner Record was prepared by me or under my direction in conformance with the Land Surveyor's Act on MAY 7 2001

Signed Charles R. Sage Jr. P.L.S or R.C.E. No. L.S. 5549  
LIC. EXP. 6-30-01



**COUNTY SURVEYOR'S STATEMENT**

This Corner Record was received July 9th 2001

and examined and filed March 14th 2002

Signed John H. Rietjens P.L.S or R.C.E. No. 4323

Title COUNTY SURVEYOR

County Surveyor's Comment \_\_\_\_\_

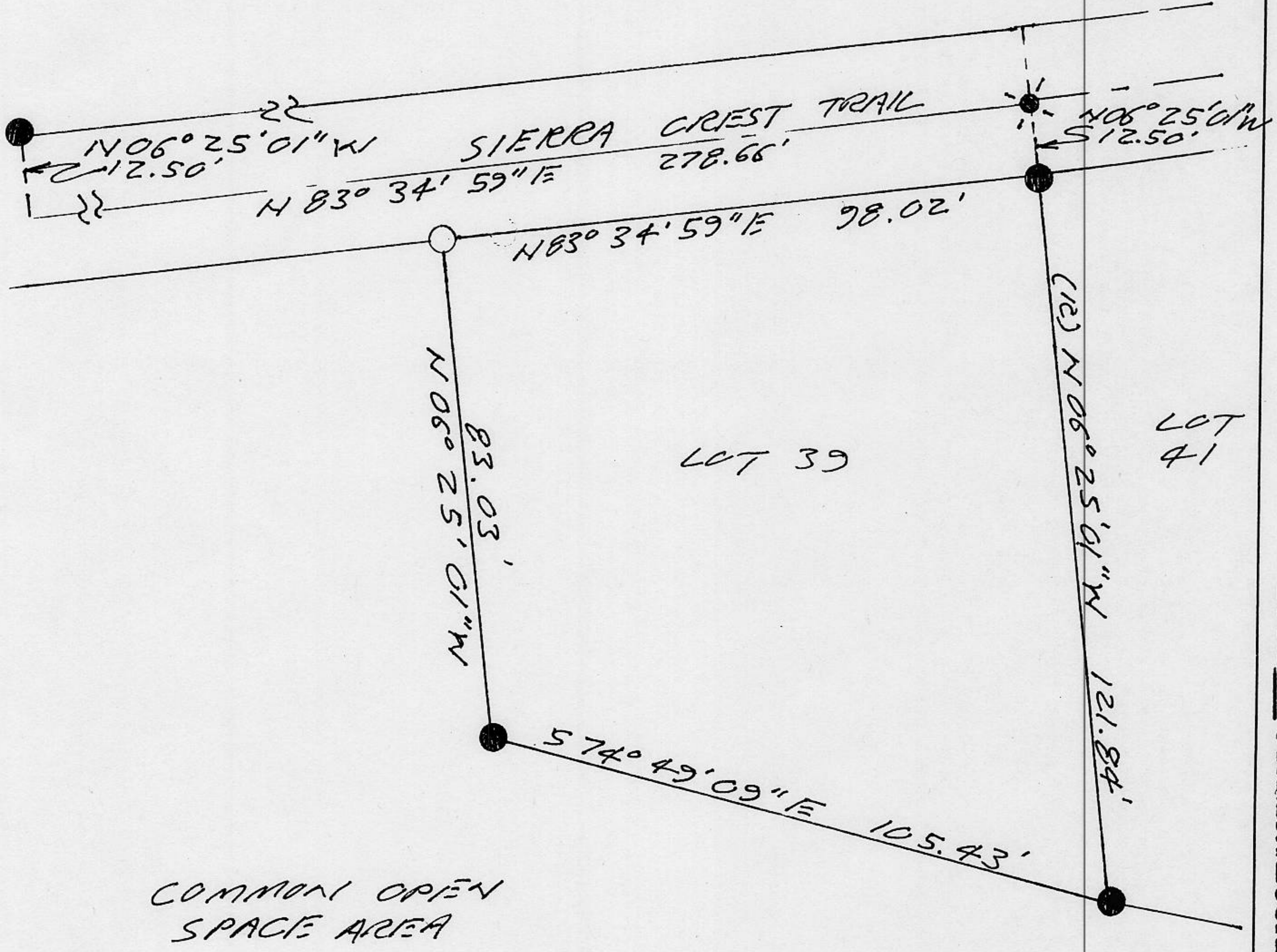


BOOK 7 CORNER RECORDS PAGE 42

SCALE 1"=30'



NOTE: THE BEARINGS AND DISTANCES SHOWN ARE RECORD PER "R" MAPS/IS. NO MATERIAL DISCREPANCIES WITH RECORD INFORMATION WERE FOUND.



BOOK 7 CORNER RECORDS PAGE 42