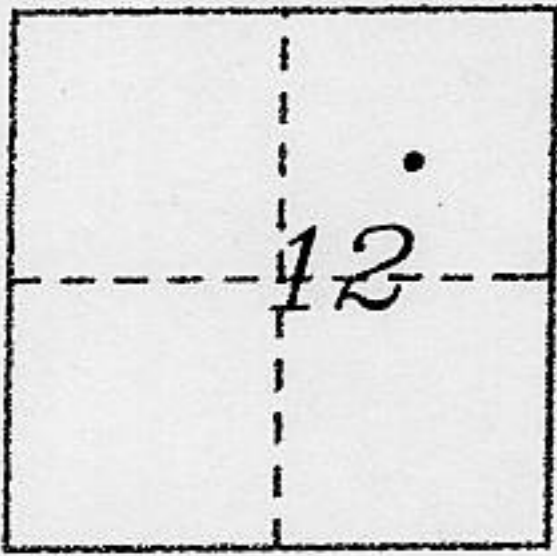


CORNER RECORD

COUNTY OF PLACER, CALIFORNIA

City of \_\_\_\_\_ Document Number \_\_\_\_\_

Brief Legal Description Lot 69 Chamberlands Addition Unit No. 3 Book "H" Maps 58



T.14N R.16E

CORNER TYPE

COORDINATES (Optional)

Government Corner  Control  N. \_\_\_\_\_  
 Meander  Property  E. \_\_\_\_\_  
 Rancho  Other  Zone \_\_\_\_\_ Datum \_\_\_\_\_  
 Date of Survey \_\_\_\_\_ Elev. \_\_\_\_\_

Corner- Left as found  Found and tagged  Established  Reestablished  Rebuilt

Identification and type of corner found: Evidence used to identify or procedure used to establish or reestablish corner:

● ~ fd. 1/2" bar with sleeve, stamped LS 2515

A description of the physical condition of the monument as found and as set or reset:

⊗ ~ set 5/8" bar with 2" metal cap stamped LS 5886

SURVEYOR'S STATEMENT

This Corner Record was prepared by me or under my direction in conformance with the Land

Surveyor's Act on December 2001

Signed [Signature] L.S. or R.C.E. Number 5886

Thomas C. Buswell

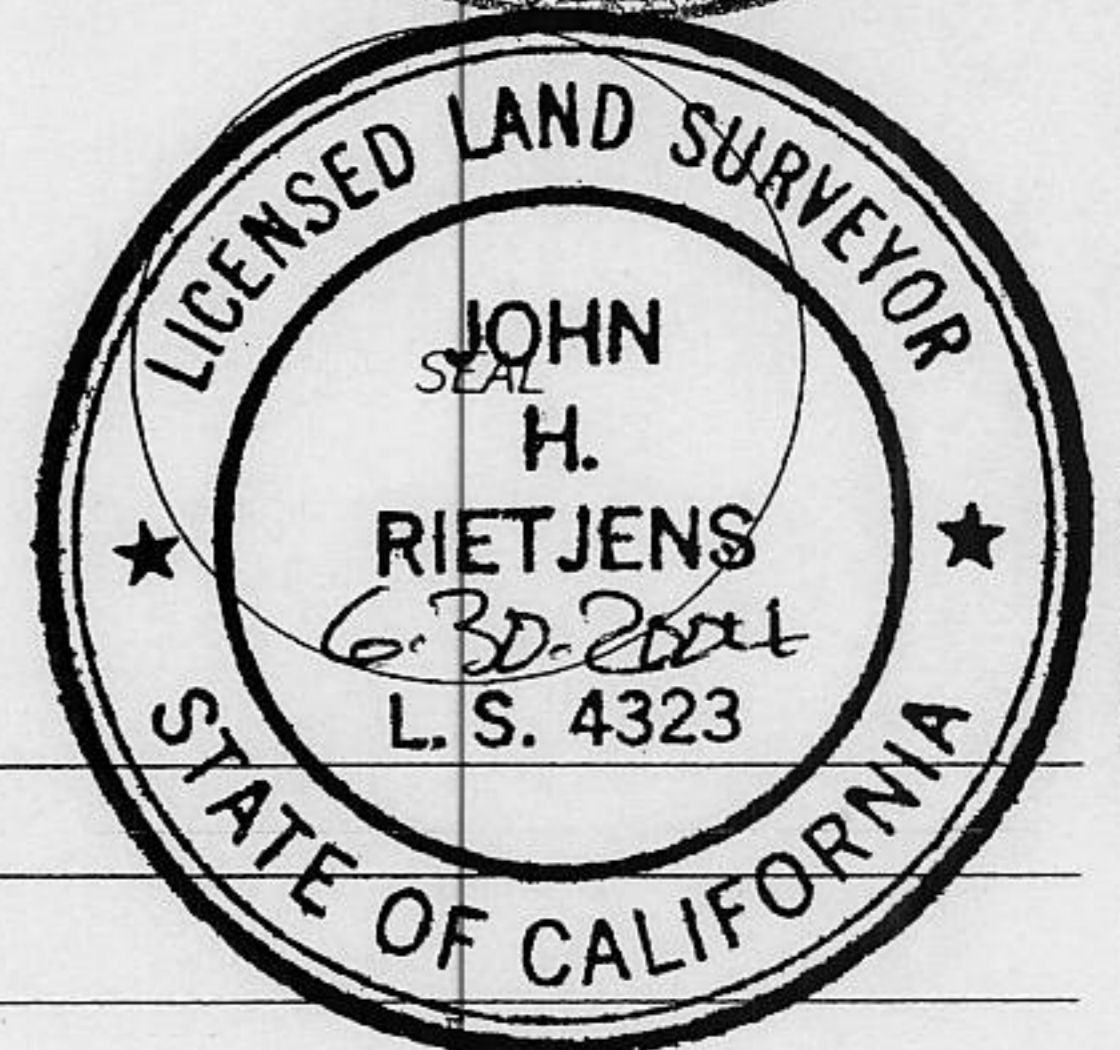
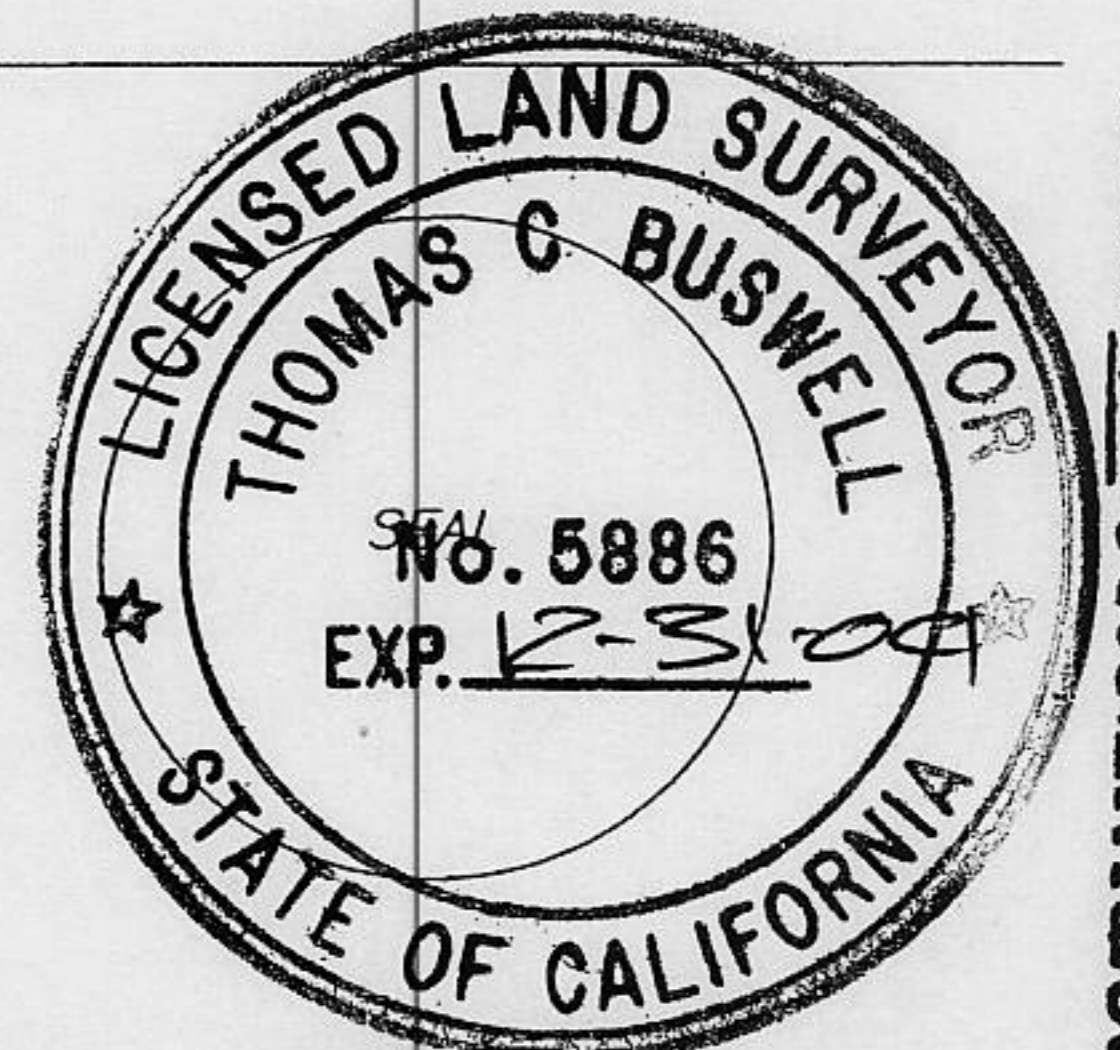
COUNTY SURVEYOR'S STATEMENT

This Corner Record was Received Dec. 31, 2001 and Examined

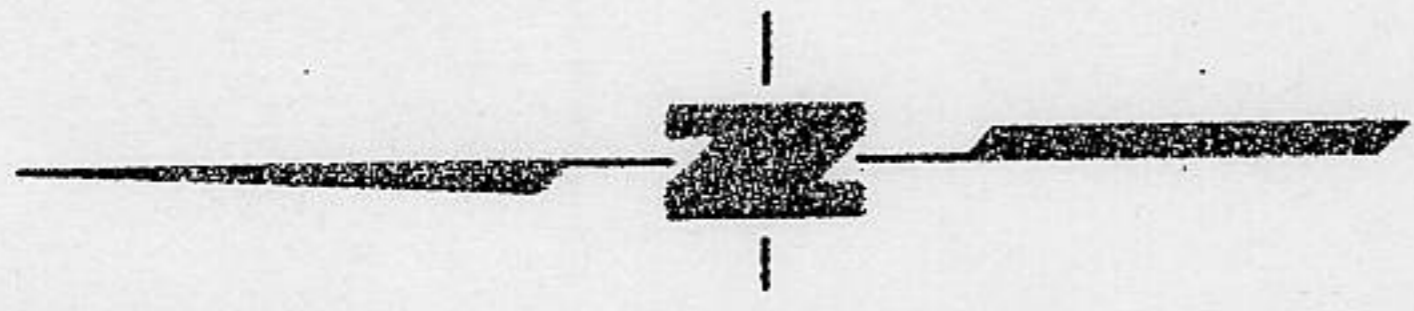
and filed MARCH 21, 2002

Signed [Signature] Title County Surveyor

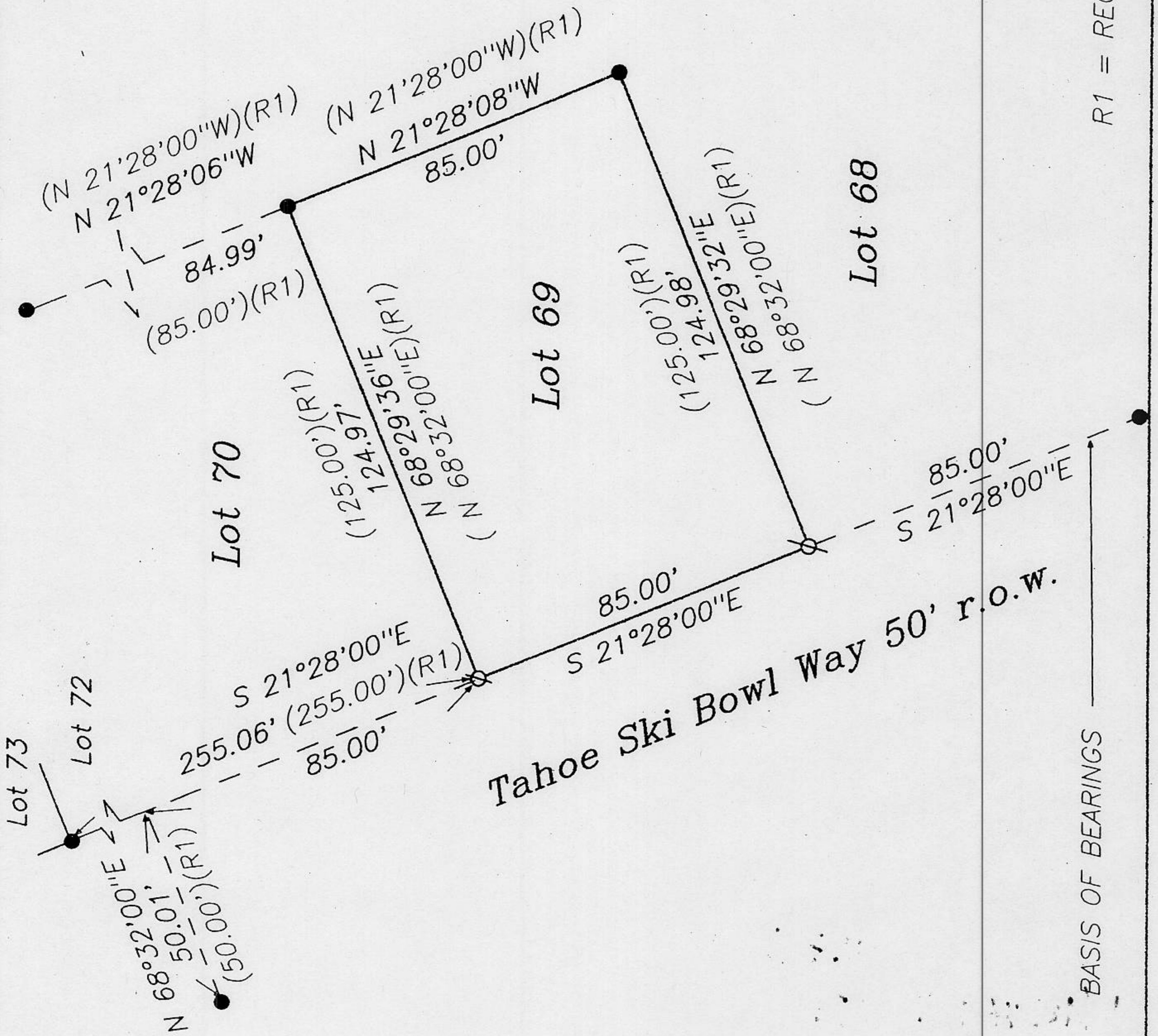
County Surveyor's Comment \_\_\_\_\_



BOOK 7 CORNER RECORDS PAGE 60



Scale 1" = 40'



R1 = RECORD PER H MAPS 58

BASIS OF BEARINGS