

**CORNER RECORD**

Document Number \_\_\_\_\_

City of \_\_\_\_\_

County of PLACER, California

Brief Legal Description LOT 33, PINELAND ADDITION No.1 E/MAPS/38 O.R.P.C.



T.15N  
R.16E

**CORNER TYPE**

- Government Corner  Control
- Meander  Property
- Rancho  Other
- Date of Survey MAY, 09, 2000

**COORDINATES (Optional)**

- ~~N \_\_\_\_\_~~
- ~~E. \_\_\_\_\_~~
- ~~Zone \_\_\_\_\_ NAD27  NAD83~~
- ~~NAD83 Epoch \_\_\_\_\_~~
- ~~Elev. \_\_\_\_\_~~
- ~~Vert. Datum: NGVD29  NAVD88~~
- ~~Meas. Units: Metric  Imperial~~

Corner - Left as found  Found and tagged  Established  Reestablished  Rebuilt

Identification and type of corner found: Evidence used to identify or procedure used to establish or reestablish the corner:

SEE SKETCH ON BACK

A description of the physical condition of the monument as found and as set or reset:

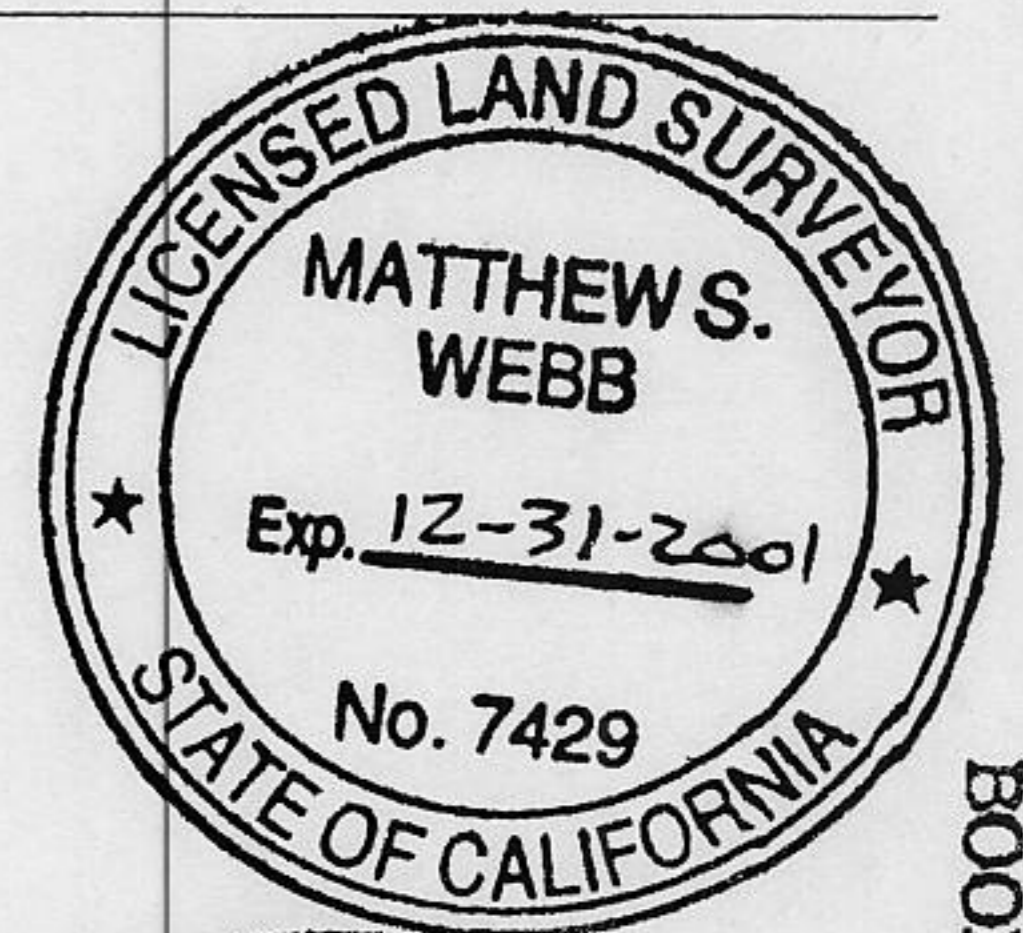
SEE SKETCH ON BACK

**SURVEYOR'S STATEMENT**

This Corner Record was prepared by me or under my direction in conformance with

the Land Surveyor's Act on MAY 12, 2000

Signed Matthew S. Webb P.L.S. or R.C.E. No. 7429



**COUNTY SURVEYOR'S STATEMENT**

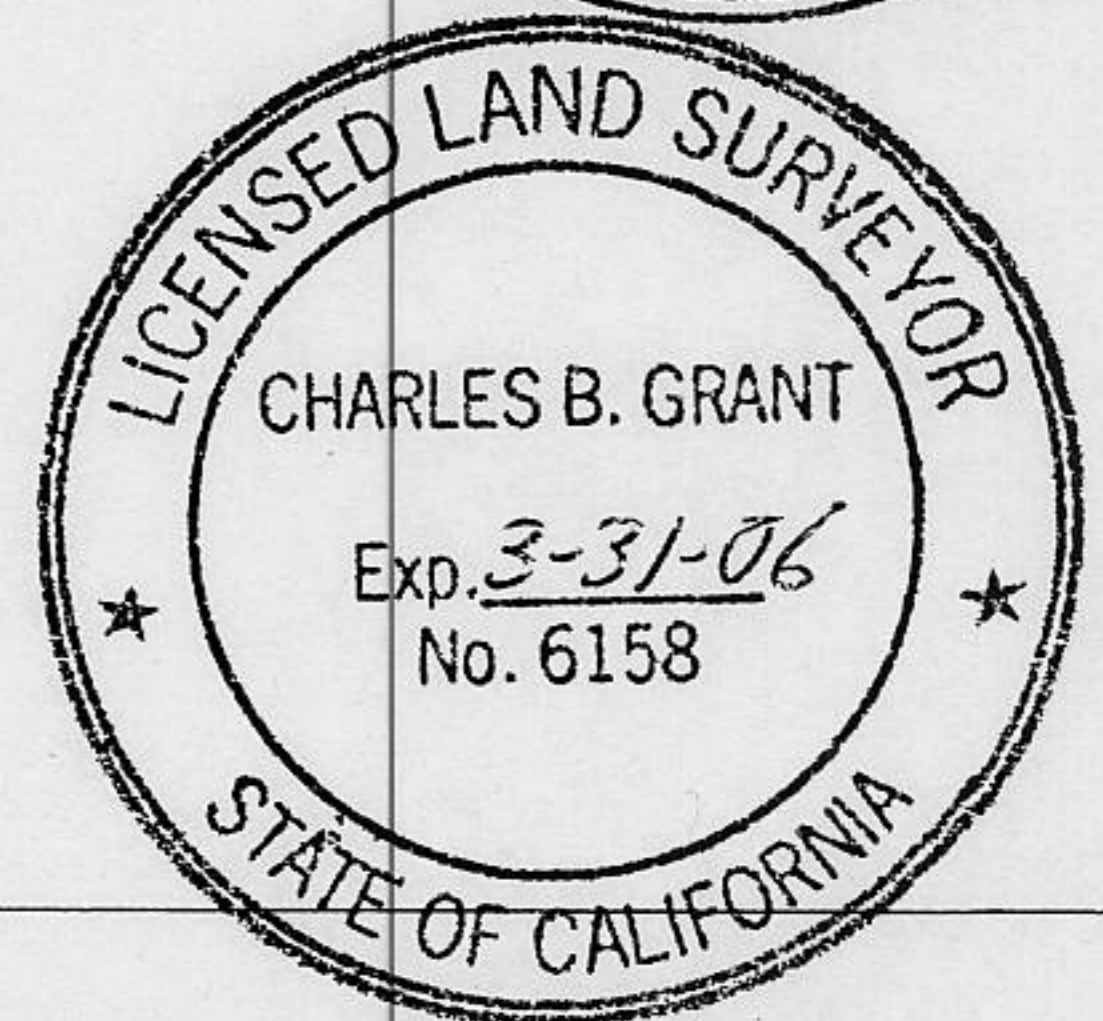
This Corner Record was received MAY 17, 2000

and examined and filed MARCH 22, 2002

Signed Charles B. Grant P.L.S. or R.C.E. No. LS 6158

Title DEPUTY COUNTY SURVEYOR

County Surveyor's Comment \_\_\_\_\_

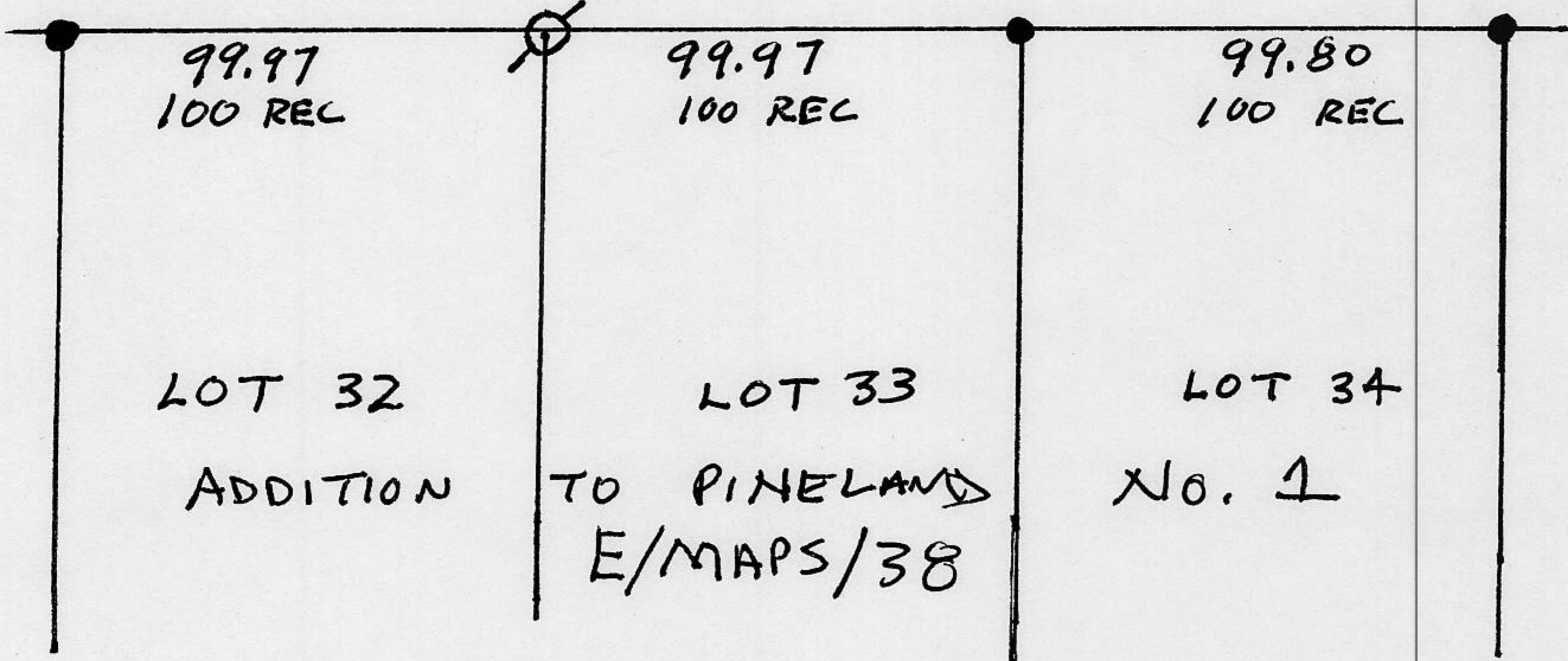
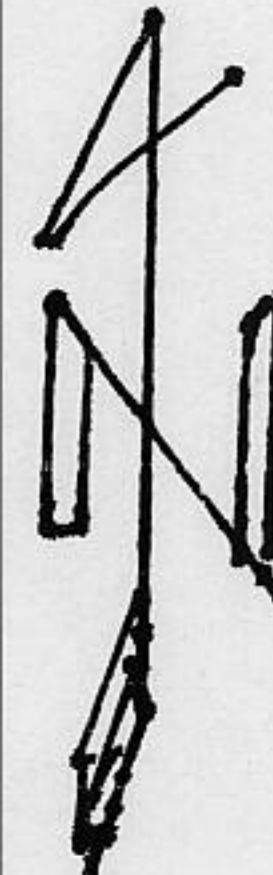


BOOK 7 CORNER RECORDS PAGE 64



TAMARACK LANE  
CO. RD # V5015

S-88°-00'-00" E



● FD 1/2" REBAR NO TAG PER E/MAPS/38  
○ SET 5/8" REBAR PLASTIC CAP L.S. ● 7429  
NOT TO SCALE

### PLAT OF SURVEY

SEC. 24 T. 15 N., R. 16 E. M. D. B. & M.  
LOT 33 OF PINELAND ADDITION No. 1.  
FILED IN BOOK E, OF MAPS AT PAGE  
38, OFFICIAL RECORDS PLACER COUNTY

SURVEY DATE: MAY 09, 2000

BOOK 7 CORNER RECORDS PAGE 64