

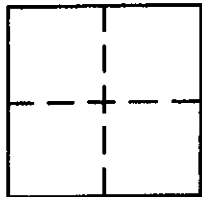
# CORNER RECORD

# COUNTY OF PLACER, CALIFORNIA

City of Book D of Maps, Page 17

Document Number \_\_\_\_\_

Brief Legal Description Lot 3, Block M, Lake Tahoe Park Subdivision No. 1, Book D of Maps, Page 17.



**CORNER TYPE**

S 13  
T 15 N  
R 16 E  
MDB & M

Government Corner  Control   
Meander  Property   
Rancho  Other

Date of Survey 10 August, 2007

**COORDINATES (Optional)**

N. \_\_\_\_\_  
E. \_\_\_\_\_  
Zone \_\_\_\_\_ Datum \_\_\_\_\_  
Elev. \_\_\_\_\_

Corner — Left as found  Found and tagged  Established  Reestablished  Rebuilt

Identification and type of corner found: Evidence used to identify or procedure used to establish or reestablish corner:

1) Found 5/8" Rebar and Cap tagged RCE 20257 on Northerly line between  
Parcels 7 & 8. \*\*

2) Found 5/8" Rebar and Cap tagged RCE 20257 on N.E. Corner of Parcel 7.\*\*

\*\*Note: Lines 1 and 2 above referenced in Book D of Maps at Page 17, and  
Book 17 of Surveys, Page 7, Placer County Recorder, California.

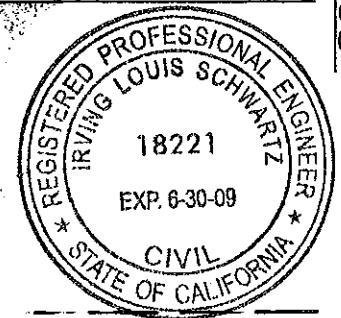
A description of the physical condition of the monument as found and as set or reset:  
Set 3/4" Iron Pipes tagged RCE 18221 at the Northwest, Northeast, and, South  
west corners of Parcel 3 of Block "M" per Book D of Maps, Page 17, Placer  
County Recorder. See Exhibit "A".

### SURVEYOR'S STATEMENT

This Corner Record was prepared by me or under my direction in conformance with the Land

Surveyors' Act on February 6, 2008.

Signed *Irving Louis Schwartz* L.S. or R.C.E. Number 18221

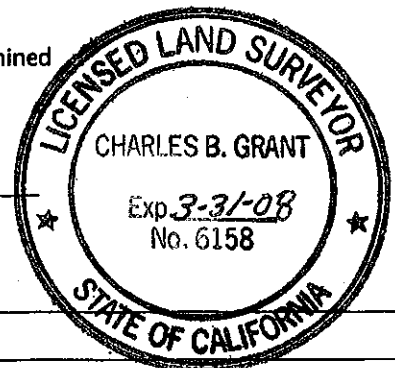


### COUNTY SURVEYOR'S STATEMENT

This Corner Record was received \_\_\_\_\_ 20\_\_\_\_ and examined

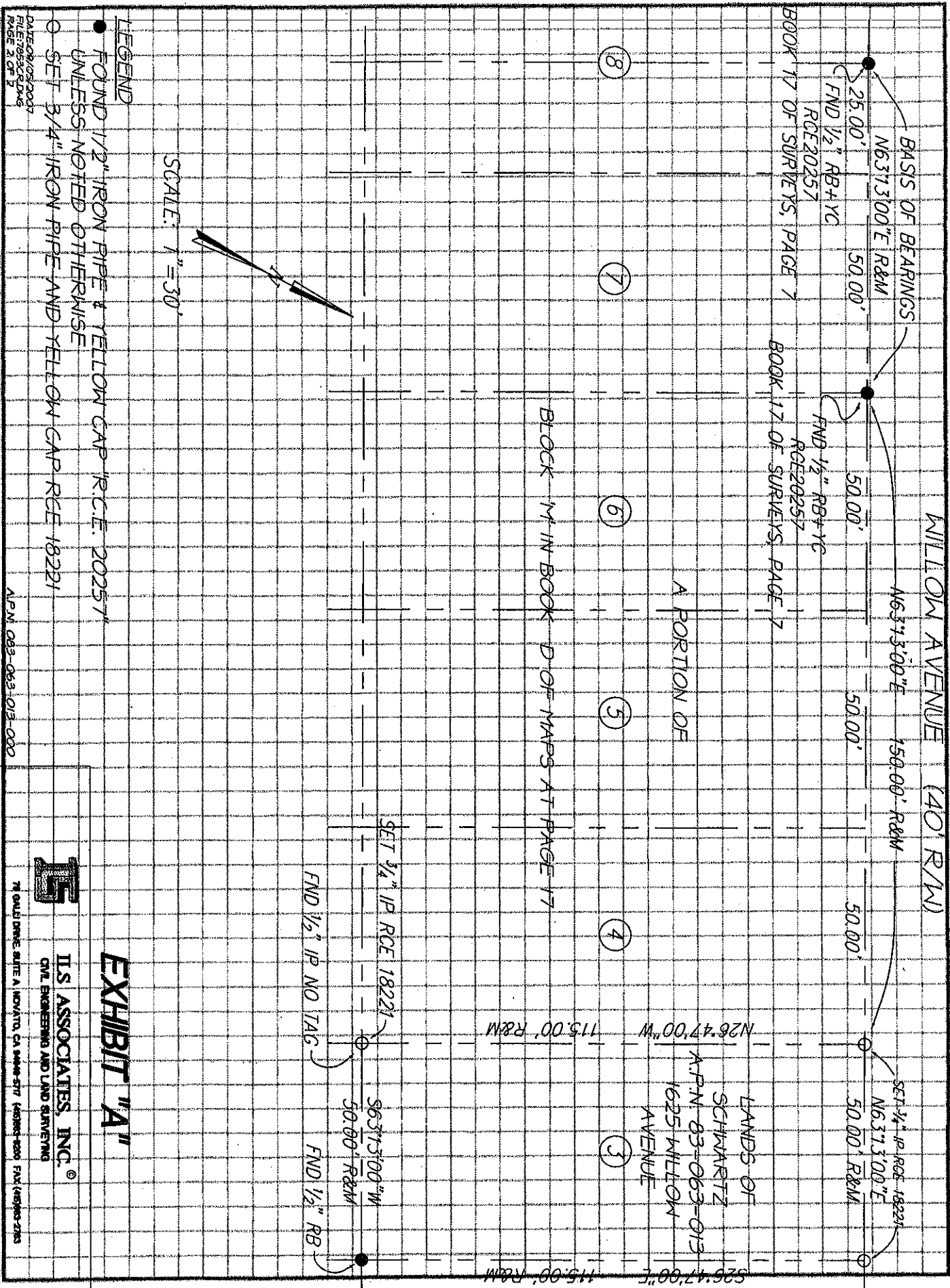
and filed MARCH 3 2008.

Signed *Charles B. Grant* L.S. 6158 Title DEPUTY COUNTY SURVEYOR  
LICENSE EXPIRES 3-31-08



County Surveyor's Comment \_\_\_\_\_

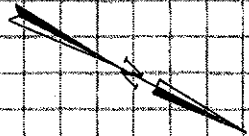
BOOK 11 CORNER RECORDS PAGE 88



**LEGEND**

- FOUND 1/2" IRON PIPE & YELLOW CAP R.C.E. 20257
- UNLESS NOTED OTHERWISE
- SET 3/4" IRON PIPE AND YELLOW CAP RGE 18221

SCALE: 1"=30'



**EXHIBIT "A"**



**ILS ASSOCIATES, INC.®**  
 CIVIL ENGINEERING AND LAND SURVEYING

74 GUILD STREET SUITE A NOVATO, CA 94945-5177 (415) 895-7800 FAX (415) 895-2183