

CORNER RECORD

COUNTY OF PLACER, CALIFORNIA

COMMUNITY City of MEADOW VISTA (UNINCORPORATED) Document Number 20080001

Brief Legal Description PARCEL 1 PM NO. 75080 26PM 88

Diagram showing corner layout with bearings S 12, T 13 N, R 8 E. Includes sections for CORNER TYPE (Government, Meander, Rancho, Date of Survey) and COORDINATES (N, E, Zone, Datum, Elev).

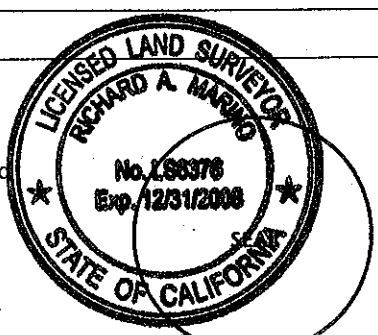
Corner — Left as found [] Found and tagged [] Established [] Reestablished [X] Rebuilt []

Identification and type of corner found: Evidence used to identify or procedure used to establish or reestablish corner: RE-ESTABLISHED MONUMENTS SHOWN AS FOUND OR SET PER 26 PM 88. MONUMENTS DELINEATE EDGE OF 40' ROAD ESM 'T & P.U.E. AS SHOWN ON MAP. MONUMENTS WERE SET AT RECORD DISTANCES BETWEEN FOUND MONUMENTS

A description of the physical condition of the monument as found and as set or reset: BOTH 3/4" IRON PIN & 1/2" IRON PIN WERE NOT FOUND. SET 5/8" REBAR W/ PLASTIC CAP LS6376 AT BOTH LOCATIONS

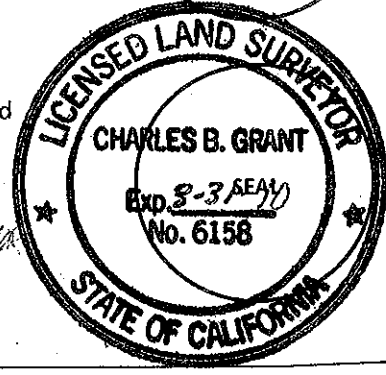
SURVEYOR'S STATEMENT

This Corner Record was prepared by me or under my direction in conformance with the Land Surveyors' Act on JANUARY 3 20 2008. Signed Richard A. Marino L.S. or R.C.E. Number LS6376



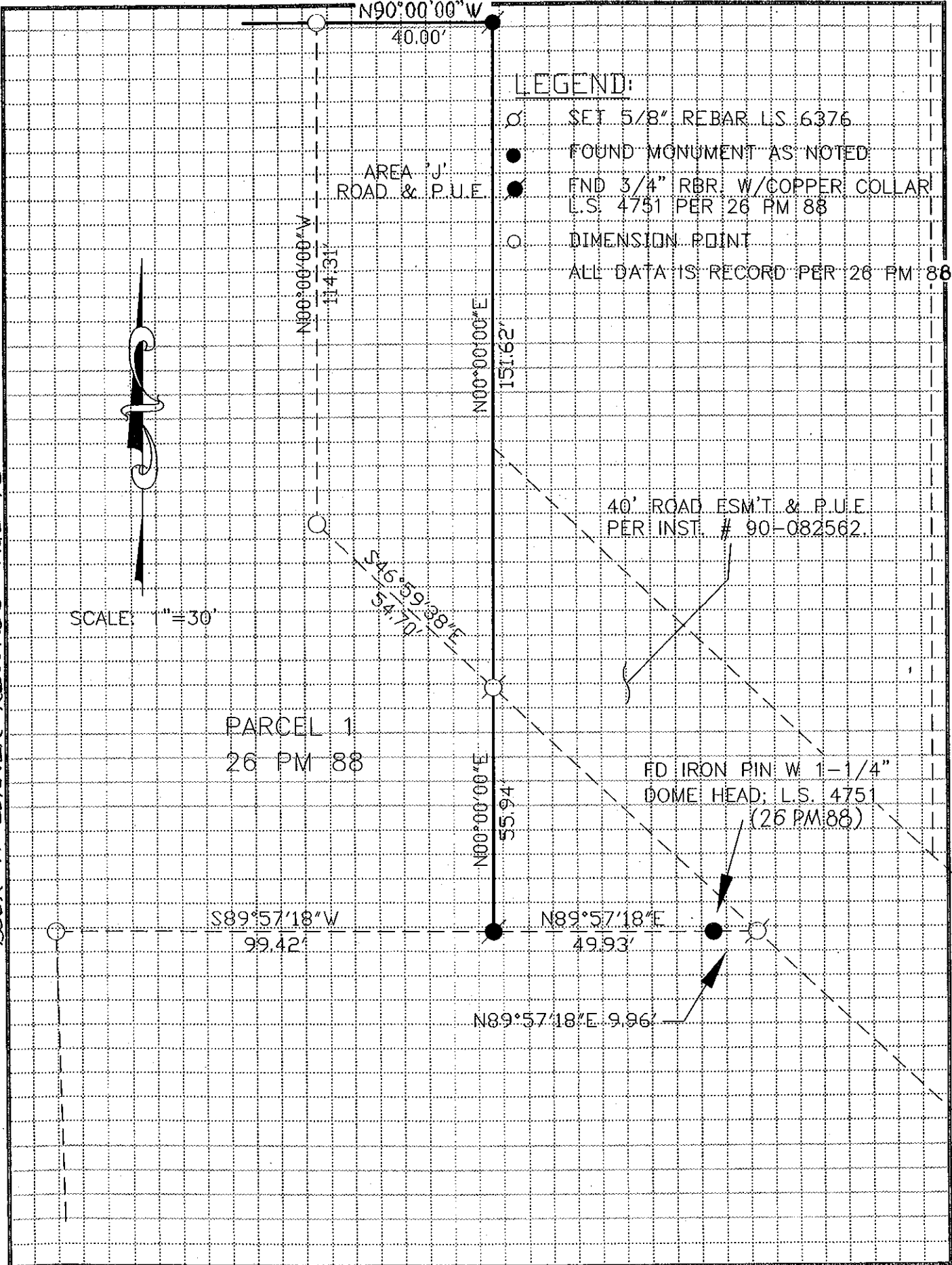
COUNTY SURVEYOR'S STATEMENT

This Corner Record was received JAN. 07 2008 19 and examined and filed MARCH 14 2008 19. Signed Charles B. Grant L.S. 6158 Title DEPUTY COUNTY SURVEYOR LICENSE EXPIRES 3-31-10



County Surveyor's Comment

BOOK 11 CORNER RECORDS PAGE 95



LEGEND:

- SET 5/8" REBAR L.S. 6376
- FOUND MONUMENT AS NOTED
- END 3/4" RBR W/COPPER COLLAR L.S. 4751 PER 26 PM 88
- DIMENSION POINT
- ALL DATA IS RECORD PER 26 PM 88

SCALE: 1"=30'



PARCEL 1
26 PM 88

AREA 'J'
ROAD & P.U.E

40' ROAD ESM'T & P.U.E
PER INST. # 90-082562.

FD IRON PIN W 1-1/4"
DOME HEAD; L.S. 4751
(26 PM 88)