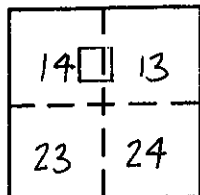


# CORNER RECORD

# COUNTY OF PLACER, CALIFORNIA

City of ROCKLIN Document Number 20080005

Brief Legal Description S.D. 88-04 STANFORD RANCH PHASE II, LOT 2 P-MAPS-80



PORTION  
SEC. 13 & 14  
T. 11 N.,  
R. 6 E.,  
M.D.M.

### CORNER TYPE

Government Corner  Control   
 Meander  Property   
 Rancho  Other   
 Date of Survey 9-28-07

### COORDINATES (Optional)

N. \_\_\_\_\_  
 E. \_\_\_\_\_  
 Zone \_\_\_\_\_ Datum \_\_\_\_\_  
 Elev. \_\_\_\_\_

Corner — Left as found  Found and tagged  Established  Reestablished  Rebuilt

Identification and type of corner found: Evidence used to identify or procedure used to establish or reestablish corner:

FOUND 2" BRASS CAP STAMPED R.C.E. 21478 AND R.R. SPIKES  
STAMPED R.C.E. 21478 PER S.D. 88-04 STANFORD RANCH PHASE II,  
LOT 2 PER BOOK P OF MAPS, PAGE 80.  
PERFORMED TIE OUT SURVEY OF FOUND MONUMENTS.

A description of the physical condition of the monument as found and as set or reset:

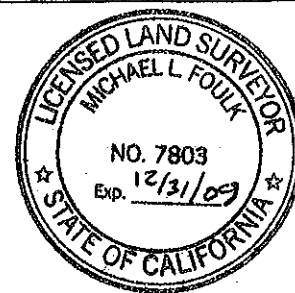
SET 2" BRASS DISK STAMPED LS 7803 IN MONUMENT WELL AND  
R.R. SPIKES WITH CENTER PUNCH STAMPED LS 7803 AFTER ASPHALT OVERLAY

### SURVEYOR'S STATEMENT

This Corner Record was prepared by me or under my direction in conformance with the Land

Surveyors' Act on MARCH 6 2008.

Signed [Signature] L.S. or R.C.E. Number 7803

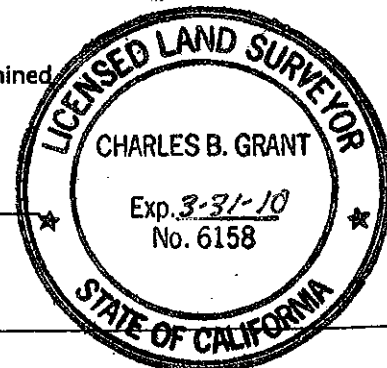


### COUNTY SURVEYOR'S STATEMENT

This Corner Record was received \_\_\_\_\_ 20 \_\_\_\_\_ and examined \_\_\_\_\_

and filed MARCH 28 2008.

Signed [Signature] Title DEPUTY COUNTY  
LS 6158 LICENSE EXPIRES 3-31-10 SURVEYOR

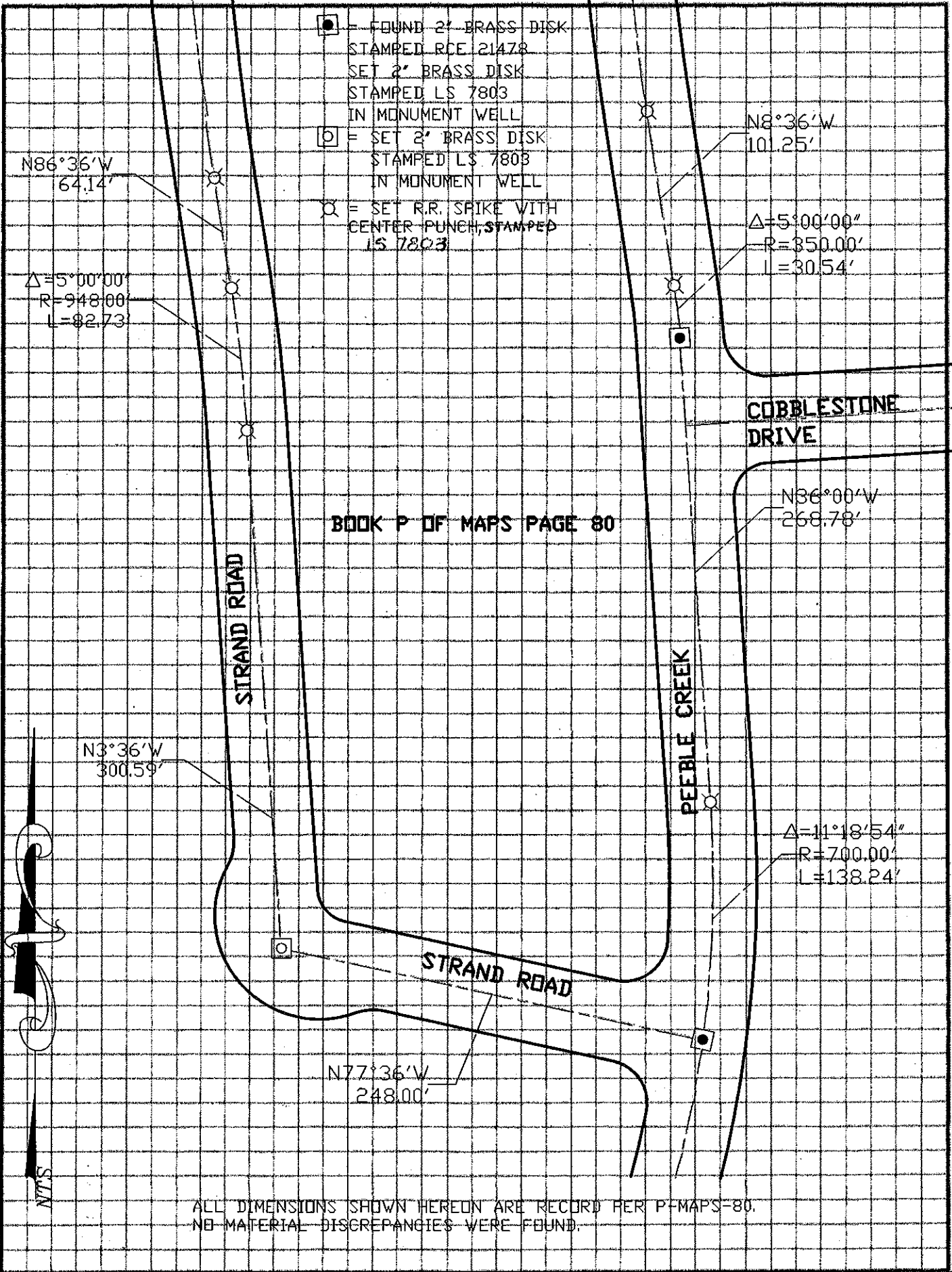


County Surveyor's Comment \_\_\_\_\_

BOOK 11 CORNER RECORDS PAGE 97

BOOK 11 CORNER RECORDS PAGE 97

BOOK 11 CORNER RECORDS PAGE 97



ALL DIMENSIONS SHOWN HEREON ARE RECORD PER P-MAPS-80. NO MATERIAL DISCREPANCIES WERE FOUND.