

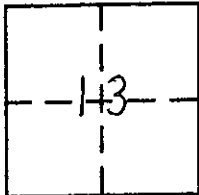
CORNER RECORD

COUNTY OF PLACER, CALIFORNIA

City of ROCKLIN

Document Number 20080003

Brief Legal Description S.D. 82-01 UNIT "K" PHASE I STANFORD RANCH AREA A-1 O-MAPS-97



WEST HALF
SEC. 13,
T. 11 N.,
R. 6 E.,
M.D.M.

CORNER TYPE

Government Corner Control
Meander Property
Rancho Other
Date of Survey 10-01-07

COORDINATES
(Optional)

N. _____
E. _____
Zone _____ Datum _____
Elev. _____

Corner — Left as found Found and tagged Established Reestablished Rebuilt

Identification and type of corner found: Evidence used to identify or procedure used to establish or reestablish corner:

FOUND 3/4" I.P. w/CAP STAMPED L.S. 3333 IN MONUMENT BOX
AND R.R. SPIKES STAMPED L.S. 3333 PER S.D. 82-01 UNIT "K"
PHASE I STANFORD RANCH AREA A-1 BOOK O OF MAPS, PAGE 97.
PERFORMED TIE OUT SURVEY OF FOUND MONUMENTS.

A description of the physical condition of the monument as found and as set or reset:

SET 2" BRASS DISK STAMPED L.S. 7803 IN MONUMENT WELL AND
R.R. SPIKES WITH CENTER PUNCH STAMPED L.S. 7803 AFTER ASPHALT OVERLAY

SURVEYOR'S STATEMENT

This Corner Record was prepared by me or under my direction in conformance with the Land

Surveyors' Act on MARCH 6 2008.

Signed Michael L. Foulk L.S. or R.C.E. Number 7803

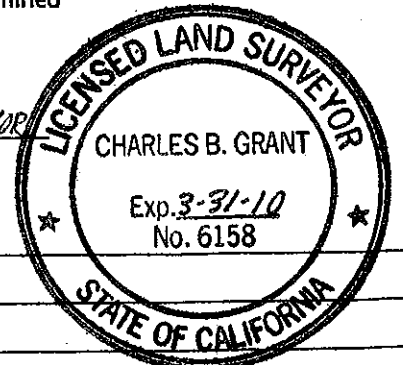


COUNTY SURVEYOR'S STATEMENT

This Corner Record was received _____ 20 _____ and examined

and filed MARCH 28 2008.

Signed Charles B. Grant Title DEPUTY COUNTY SURVEYOR
LS 6158 LICENSE EXPIRES 3-31-10



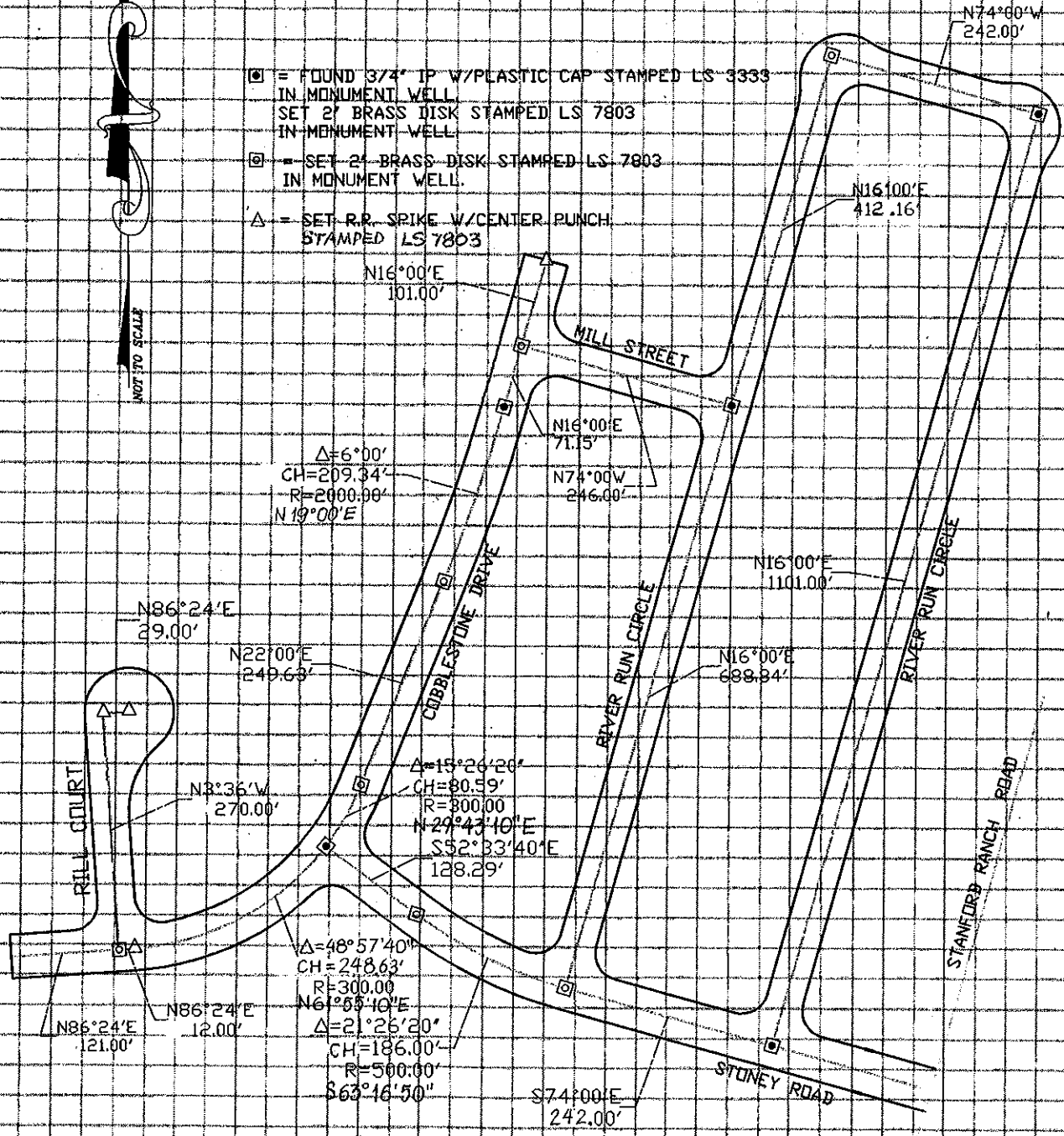
County Surveyor's Comment _____

BOOK 11 CORNER RECORDS PAGE 98

BOOK 11 OF MAPS, PAGE 97



- = FOUND 3/4" IP W/PLASTIC CAP STAMPED LS 3333
IN MONUMENT WELL
SET 21 BRASS DISK STAMPED LS 7803
IN MONUMENT WELL
- ⊠ = SET 21 BRASS DISK STAMPED LS 7803
IN MONUMENT WELL
- △ = SET R.R. SPIKE W/CENTER PUNCH
STAMPED LS 7803



BOOK 11 CORNER RECORDS PAGE 98

BOOK 11 CORNER RECORDS PAGE 98