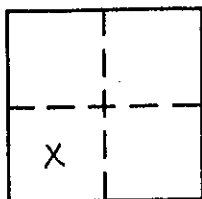


CORNER RECORD

COUNTY OF PLACER, CALIFORNIA

City of _____ Document Number _____

Brief Legal Description LOT 16, BLOCK "Q", SQUAW VALLEY ESTATES SUB. F/MAPS/9 O.R.P.C.



SEC. 29
T. 16 N.
R. 16 E.
M.D.B. & M.

CORNER TYPE

Government Corner Control
Meander Property
Rancho Other
Date of Survey 7-6-2006

COORDINATES (Optional)

N. _____
E. _____
Zone _____ Datum _____
Elev. _____

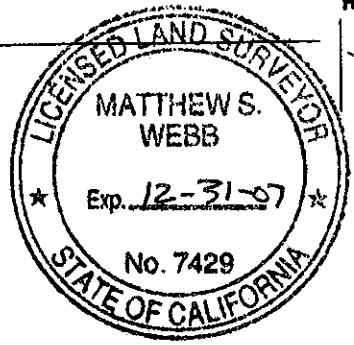
Corner — Left as found Found and tagged Established Reestablished Rebuilt

Identification and type of corner found: Evidence used to identify or procedure used to establish or reestablish corner:
USED RECORD DIMENSIONS AND THE FOUND MONUMENTS PER F/MAPS/9, O.R.P.C., TO REESTABLISH THE MISSING CORNERS OF LOT 16, BLOCK "Q", AS SHOWN ON THE ACCOMPANYING PLAT.

A description of the physical condition of the monument as found and as set or reset:
SET 5/8" REBAR WITH YELLOW PLASTIC CAP MARKED LS 7429.

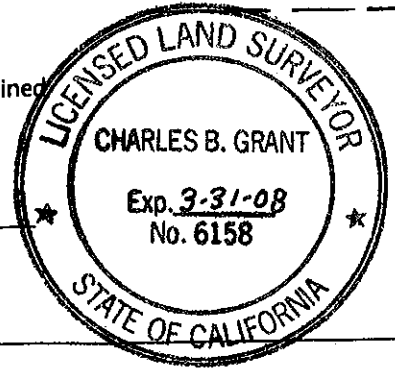
SURVEYOR'S STATEMENT

This Corner Record was prepared by me or under my direction in conformance with the Land Surveyors' Act on October, 16 2007.
Signed Matthew S. Webb L.S. or R.C.E. Number 7429



COUNTY SURVEYOR'S STATEMENT

This Corner Record was received 10-17-07 20 _____ and examined _____
and filed OCT. 19 2007.
Signed Charles B. Grant Title DEPUTY COUNTY SURVEYOR
LS 6158



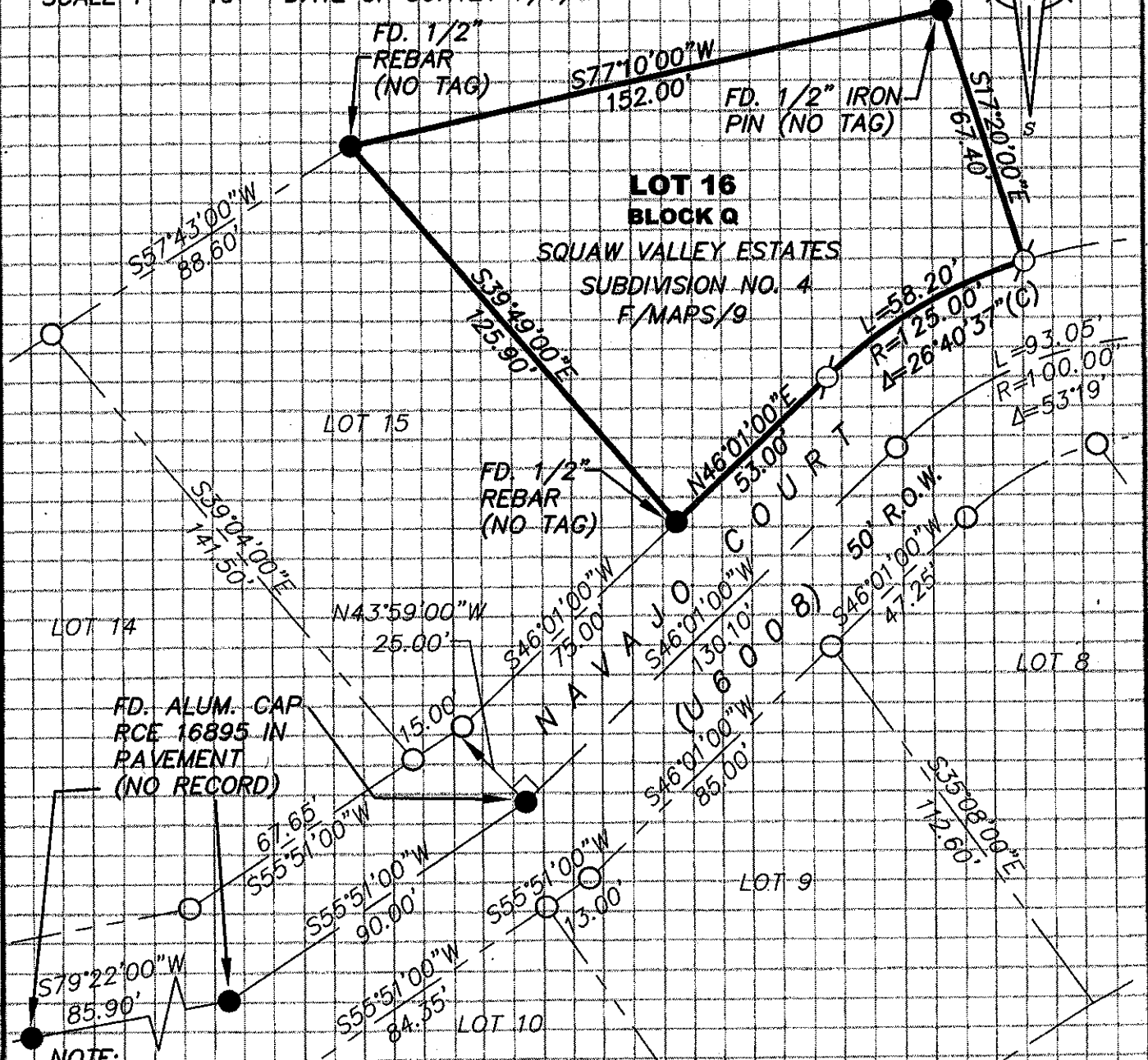
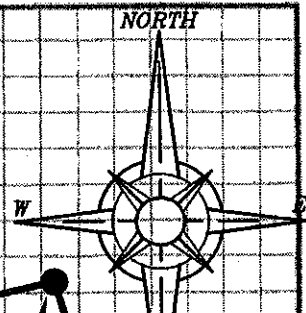
County Surveyor's Comment _____

BOOK 11 CORNER RECORDS PAGE 1

PLAT OF SURVEY

LOT 16, BLOCK "Q", SQUAW VALLEY ESTATES
 SUBDIVISION NO. 4, BOOK F, OF MAPS, AT PAGE 9,
 OFFICIAL RECORDS PLACER COUNTY, CALIFORNIA.
 A PORTION OF THE S.W. 1/4 OF SECTION 29,
 TOWNSHIP 16 N., RANGE 16 E., M.D.B. & M.

SCALE 1" = 40' DATE OF SURVEY 7/6/2006



NOTE:
 ALL BEARINGS AND DISTANCES SHOWN HEREON ARE RECORD
 PER F/MAPS/9, O.R.P.C.

- FOUND MONUMENT AS SHOWN HEREON
- SET 5/8" REBAR WITH YELLOW PLASTIC CAP L.S. 7429
- DIMENSION PT (NOTHING FOUND OR SET)
- (C) CALCULATED PER F/MAPS/9, O.R.P.C.

J/N 1258.00

BOOK 11 CORNER RECORDS PAGE 1