

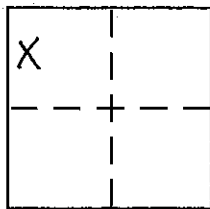
CORNER RECORD

Document Number _____

City of _____

County of PLACER, California

Brief Legal Description LOT 58, TRACT No. 224, NORTHSTAR UNIT 1-C, J/MAPS/46, O.R.P.C.



Sec. 32
 T. 17 N.
 R. 17 E.
 M.D.B. & M.

CORNER TYPE

Government Corner Control
 Meander Property
 Rancho Other

COORDINATES (Optional)

N. _____
 E. _____
 Zone _____ NAD27 NAD83
 NAD83 Epoch _____
 Elev. _____
 Vert. Datum: NGVD29 NAVD88
 Meas. Units: Metric Imperial

Date of Survey 4-23-2007

Corner - Left as found Found and tagged Established Reestablished Rebuilt

Identification and type of corner found: Evidence used to identify or procedure used to establish or reestablish the corner:

USED THE FOUND ORIGINAL MONUMENTS PER J/MAPS/46, O.R.P.C., TO SET THE MISSING CORNER USING PROPORTION, AS SHOWN ON THE ACCOMPANYING PLAT.

A description of the physical condition of the monument as found and as set or reset:

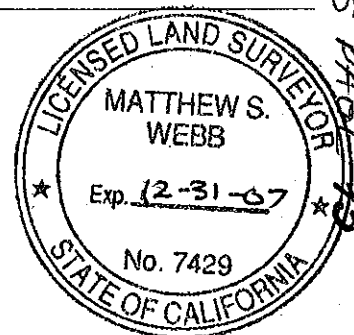
SET A 5/8" REBAR WITH YELLOW PLASTIC CAP MARKED LS 7429.

SURVEYOR'S STATEMENT

This Corner Record was prepared by me or under my direction in conformance with

the Land Surveyor's Act on April 25 2007

Signed [Signature] P.L.S. or R.C.E. No. 7429



COUNTY SURVEYOR'S STATEMENT

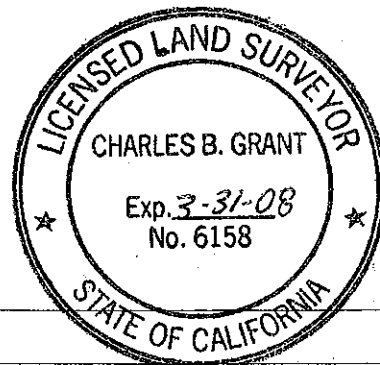
This Corner Record was received _____

and examined and filed Nov. 29 2007

Signed [Signature] P.L.S. or R.C.E. No. LS 6158

Title DEPUTY COUNTY SURVEYOR

County Surveyor's Comment _____

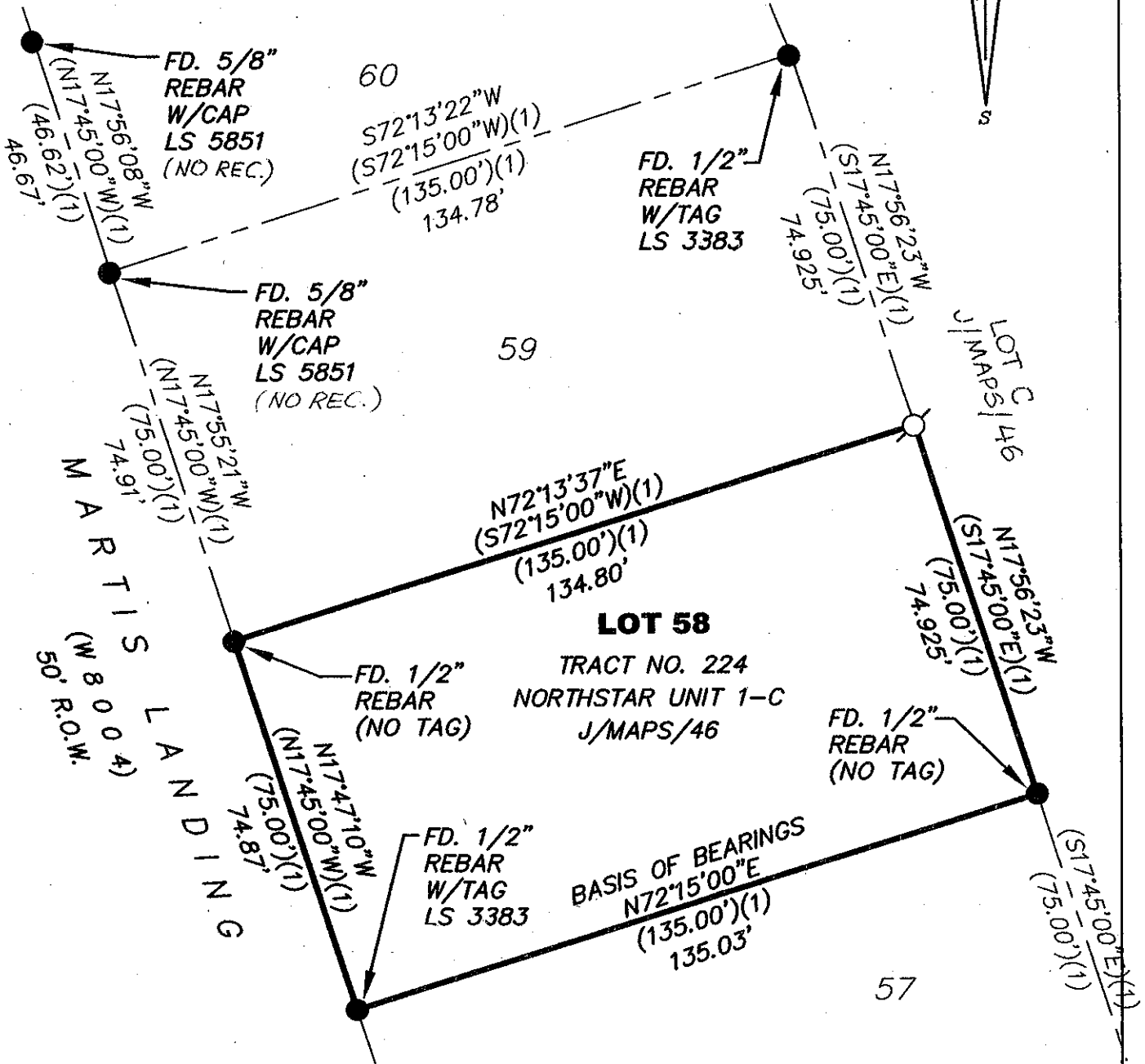
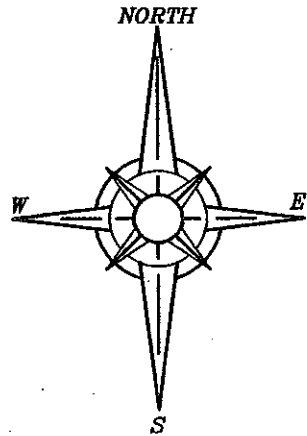


BOOK 11 CORNER RECORDS PAGE 15

PLAT OF SURVEY

LOT 58, TRACT NO. 224, NORTHSTAR UNIT 1-C,
 BOOK J OF MAPS AT PAGE 46, OFFICIAL RECORDS
 PLACER COUNTY, CALIFORNIA. A PORTION OF THE
 N.W. 1/4 OF SECTION 32, TOWNSHIP 17, N., RANGE
 17, E., M.D.B. & M.

SCALE 1" = 30' DATE OF SURVEY 4/23/2007



- FOUND MONUMENT AS SHOWN HEREON
- SET 5/8" REBAR WITH YELLOW PLASTIC CAP L.S. 7429
- (1) RECORD PER J/MAPS/46, O.R.P.C..

J/N 1434.00

BOOK 11 CORNER RECORDS PAGE 15