

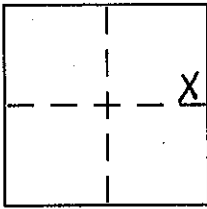
CORNER RECORD

Document Number _____

City of _____

County of PLACER, California

Brief Legal Description LOT 11 & 12, BLOCK "G", ICE LAKES SUB. No 2, G/MAPS/1, O.R.P.C.



SEC. 27
T. 17 N.
R. 14 E.
M.D.B. & M.

CORNER TYPE

- Government Corner Control
- Meander Property
- Rancho Other

Date of Survey 5-24-2007

COORDINATES (Optional)

N. _____
 E. _____
 Zone _____ NAD27 NAD83
 NAD83 Epoch _____
 Elev. _____
 Vert. Datum: NGVD29 NAVD88
 Meas. Units: Metric Imperial

Corner - Left as found Found and tagged Established Reestablished Rebuilt

Identification and type of corner found: Evidence used to identify or procedure used to establish or reestablish the corner:

USED THE RECORD DIMENSIONS AND THE FOUND MONUMENTS PER G/MAPS/1, O.R.P.C. TO REESTABLISH THE MISSING CORNERS OF LOT 11 AND LOT 12 OF BLOCK "G", AS SHOWN ON THE ACCOMPANYING PLAT.

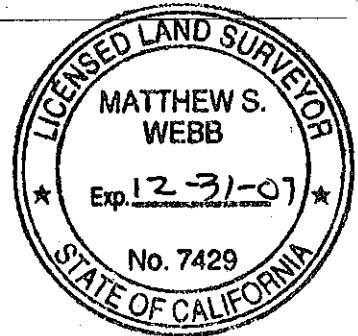
A description of the physical condition of the monument as found and as set or reset:

SET 5/8" REBAR WITH YELLOW PLASTIC CAP MARKED LS 7429.

SURVEYOR'S STATEMENT

This Corner Record was prepared by me or under my direction in conformance with the Land Surveyor's Act on June 04 2007

Signed [Signature] P.L.S. or R.C.E. No. 7429



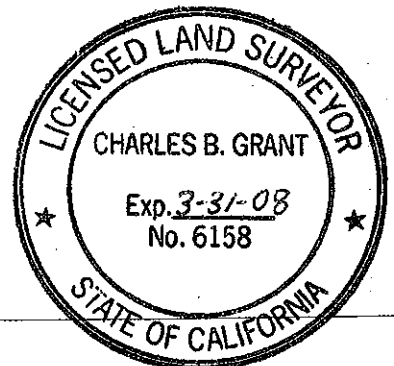
COUNTY SURVEYOR'S STATEMENT

This Corner Record was received _____ and examined and filed Nov. 29, 2007

Signed [Signature] P.L.S. or R.C.E. No. LS 6158

Title DEPUTY COUNTY SURVEYOR

County Surveyor's Comment _____

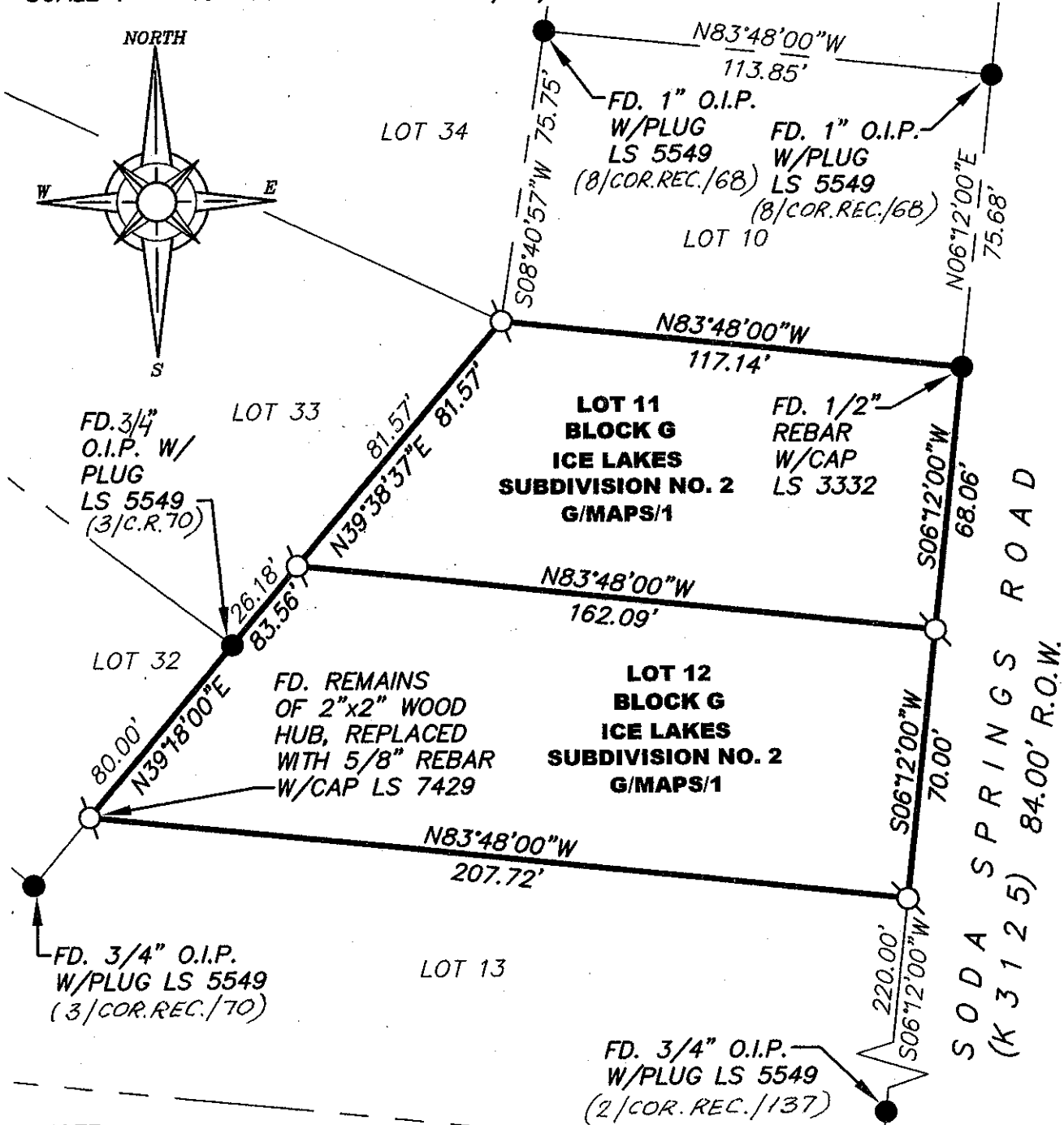


BOOK 11 CORNER RECORDS PAGE 22

PLAT OF SURVEY

LOTS 11 & 12, BLOCK G, ICE LAKES SUBDIVISION NO. 2, BOOK G OF MAPS, AT PAGE 1, OFFICIAL RECORDS PLACER COUNTY, CALIFORNIA. A PORTION OF THE N.E. 1/4 OF SECTION 27, TOWNSHIP 17 N., RANGE 14 E., M.D.B. & M.

SCALE 1" = 40' DATE OF SURVEY 5/24/2007



NOTE:

ALL BEARINGS AND DISTANCES SHOWN HEREON ARE RECORD PER G/MAPS/1.

- FOUND MONUMENT AS SHOWN HEREON
- ⊙ SET 5/8" REBAR WITH YELLOW PLASTIC CAP L.S. 7429
- DIMENSION PT (NOTHING FOUND OR SET)

J/N 1338.01

BOOK 11 CORNER RECORDS PAGE 22