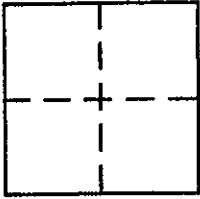


CORNER RECORD

COUNTY OF PLACER, CALIFORNIA

COMMUNITY City of GRANITE BAY (UNINCORPORATED) Document Number _____

Brief Legal Description LOT 96 WALDEN WOODS UNITS 2 & 3 BOOK L MAPS PAGE 4



S 25
T 11 N
R 7 E

CORNER TYPE

- Government Corner
- Meander
- Rancho
- Date of Survey _____
- Control
- Property
- Other

COORDINATES (Optional)

N. _____
E. _____
Zone _____ Datum _____
Elev. _____

Corner — Left as found Found and tagged Established Reestablished Rebuilt

Identification and type of corner found: Evidence used to identify or procedure used to establish or reestablish corner:

REESTABLISHED NW COR LOT 96 PER RECORD DATA ON L MAPS 4 & P MAPS 32. NO MATERIAL DISCREPANCY WAS FOUND. ACCEPTED 5/8" REBAR AT SOUTH CORNER LOT 96 AS CORNER & SET CAP LS 6376

A description of the physical condition of the monument as found and as set or reset:

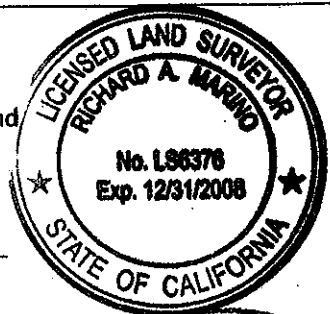
3/4" REBAR AT NW COR WAS NOT FOUND. PER OWNER, LARGE BOULDER AT NW CORNER WAS SET IN PLACE MANY YEARS AGO. SET 5/8" BRASS TAG, LS 6376 IN EPOXY ON BOULDER

SURVEYOR'S STATEMENT

This Corner Record was prepared by me or under my direction in conformance with the Land

Surveyors' Act on NOVEMBER 27 2007.

Signed Richard A. Marino L.S. or R.C.E. Number LS 6376

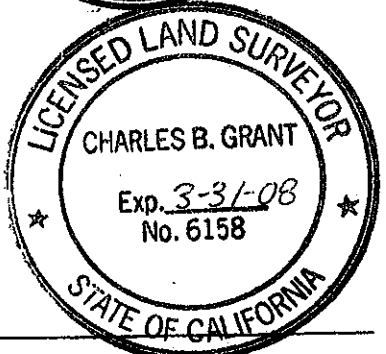


COUNTY SURVEYOR'S STATEMENT

This Corner Record was received _____ 20 _____ and examined

and filed Nov. 29 2007.

Signed Charles B. Grant Title DEPUTY COUNTY SURVEYOR L.S. 6158

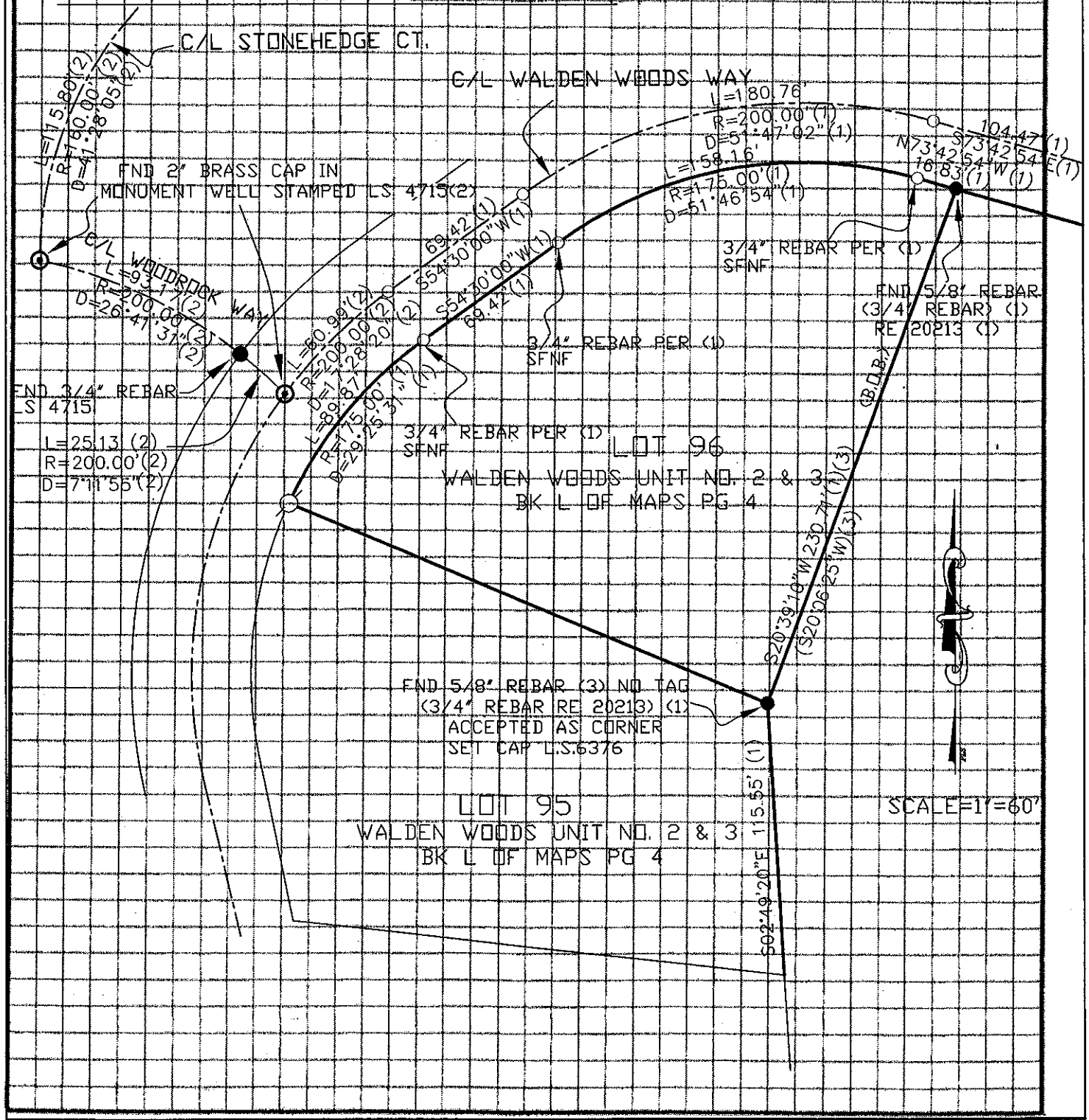


County Surveyor's Comment _____

BOOK 11 CORNER RECORDS PAGE 25

LEGEND:

- ⊙ SET TAG & EPOXY IN GRANITE ROCK L.S. 6376
- FOUND MONUMENTATION AS NOTED
- DIMENSION POINT-AS NOTED
- ⊕ FND MONUMENT AS NOTED
- (1) RECORD DATA PER BK L OF MAPS PG 4
- (2) RECORD DATA PER BK P OF MAPS PG 32
- (3) RECORD DATA PER BK 18 OF SURVEYS PG 2
- SFNF SEARCHED FOR NOT FOUND
- B.O.B. BASIS OF BEARINGS



BOOK 11 CORNER RECORDS PAGE 25

BOOK 11 CORNER RECORDS PAGE 25