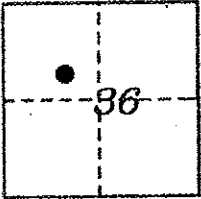


CORNER RECORD

COUNTY OF PLACER, CALIFORNIA

City of _____ Document Number _____
Brief Legal Description LOT 5, BLOCK 33, TAHOE PINES SUDV. C MAPS 12



T.15N.,R.16E.
M.D.B.& M.

CORNER TYPE

Government Corner Control
Meander Property
Rancho Other
Date of Survey OCTOBER 2006

COORDINATES
(Optional)

N. _____
E. _____
Zone _____ Datum _____
Elev. _____

Corner— Left as found Found and tagged Established Reestablished Rebuilt

Identification and type of corner found: Evidence used to identify or procedure used to establish or reestablish corner:

• ~ fd. monument as indicated

A description of the physical condition of the monument as found and as set or reset:

∅ ~ set 5/8" rebar with 2" aluminum cap
stamped "TAHOE BASIN LAND SURVEYING,
THOMAS C. BUSWELL, LS 5886".

SURVEYOR'S STATEMENT

This Corner Record was prepared by me or under my direction in conformance with the Land

Surveyor's Act on MARCH 2007

Signed [Signature] L.S. or R.C.E. Number 5886
Thomas C. Buswell, PLS



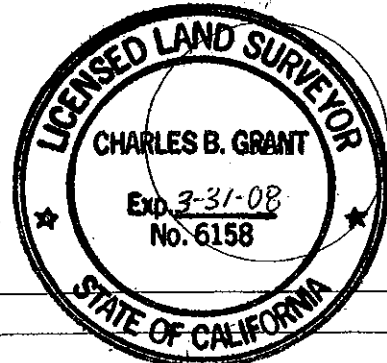
COUNTY SURVEYOR'S STATEMENT

This Corner Record was Received _____ 20____ and Examined

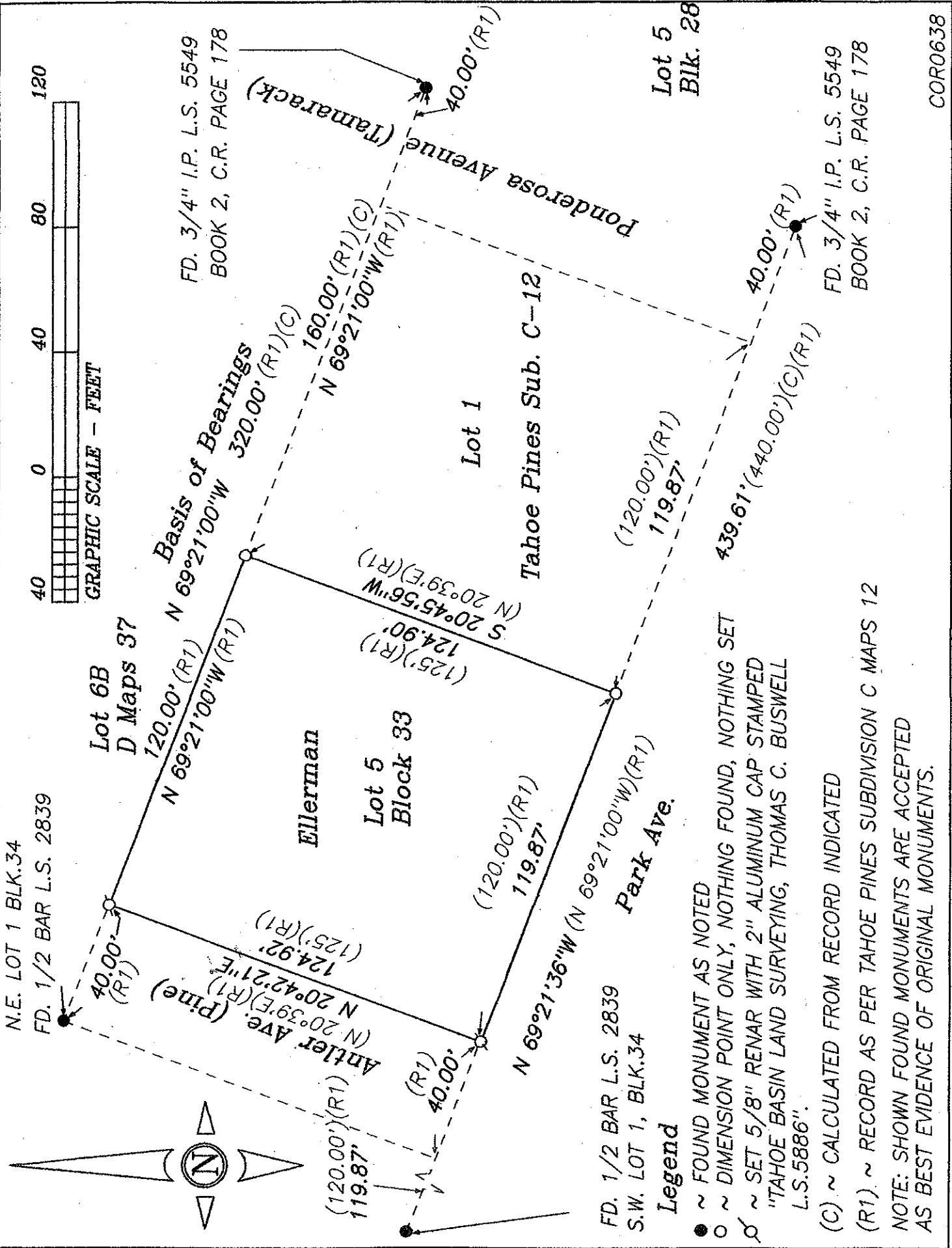
and filed DEC 24 2007

Signed [Signature] Title DEPUTY COUNTY SURVEYOR
LS 6158

County Surveyor's Comment _____



BOOK 11 CORNER RECORDS PAGE 35



FD. 3/4" I.P. L.S. 5549
BOOK 2, C.R. PAGE 178

Lot 5
Blk. 28

FD. 3/4" I.P. L.S. 5549
BOOK 2, C.R. PAGE 178

COR0638

FD. 1/2 BAR L.S. 2839
S.W. LOT 1, BLK.34

Legend

- ~ FOUND MONUMENT AS NOTED
- ~ DIMENSION POINT ONLY, NOTHING FOUND, NOTHING SET
- ◻ ~ SET 5/8" RENAR WITH 2" ALUMINUM CAP STAMPED "TAHOE BASIN LAND SURVEYING, THOMAS C. BUSWELL L.S.5886"

(C) ~ CALCULATED FROM RECORD INDICATED
 (R1) ~ RECORD AS PER TAHOE PINES SUBDIVISION C MAPS 12
 NOTE: SHOWN FOUND MONUMENTS ARE ACCEPTED AS BEST EVIDENCE OF ORIGINAL MONUMENTS.