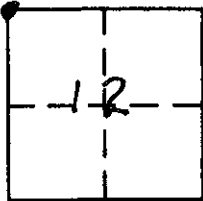


CORNER RECORD

COUNTY OF PLACER, CALIFORNIA

City of \_\_\_\_\_ Document Number \_\_\_\_\_

Brief Legal Description RM for NW cor. Sec. 12, T16N, R17E, M.D.M.



S12  
T16N  
R17E  
M.D.M.

CORNER TYPE

- Government Corner  Control
- Meander  Property
- Rancho  Other
- Date of Survey \_\_\_\_\_

COORDINATES (Optional)

N. \_\_\_\_\_  
 E. \_\_\_\_\_  
 Zone \_\_\_\_\_ Datum \_\_\_\_\_  
 Elev. \_\_\_\_\_

Corner — Left as found  Found and tagged  Established  Reestablished  Rebuilt

Identification and type of corner found: Evidence used to identify or procedure used to establish or reestablish corner:

Found RMs North and South of Original corner, in good condition as shown on that Record of Survey recorded in Book 3 of Surveys at page 20, Placer County, California

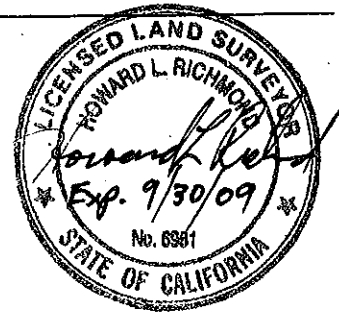
A description of the physical condition of the monument as found and as set or reset: existing Southerly monument was scheduled to be destroyed by highway associated construction so set additional R.M. 50' southerly in line with original monuments

SURVEYOR'S STATEMENT

This Corner Record was prepared by me or under my direction in conformance with the Land

Surveyors' Act on December 31 2007.

Signed Howard L. Richmond L.S. or R.C.E. Number LS 6981

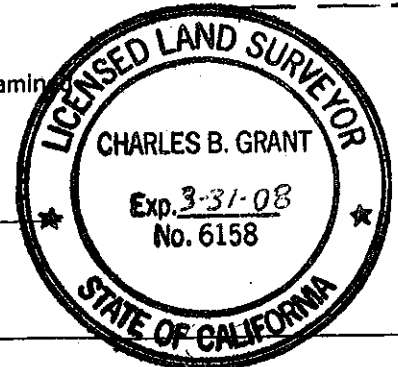


COUNTY SURVEYOR'S STATEMENT

This Corner Record was received DECEMBER 31-ST 2007 and examined

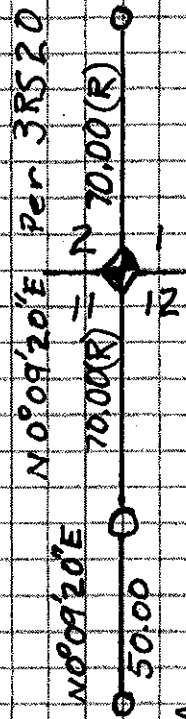
and filed JANUARY 15 2008.

Signed Charles B. Grant L.S. No. 6158 Title DEPUTY COUNTY SURVEYOR

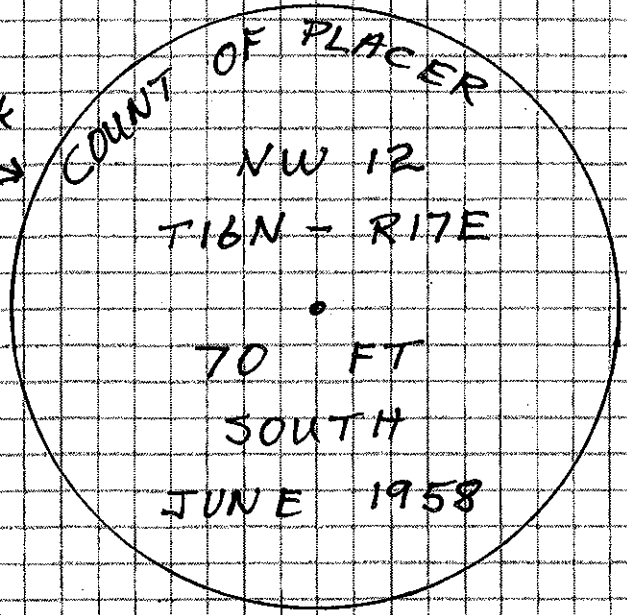


County Surveyor's Comment \_\_\_\_\_

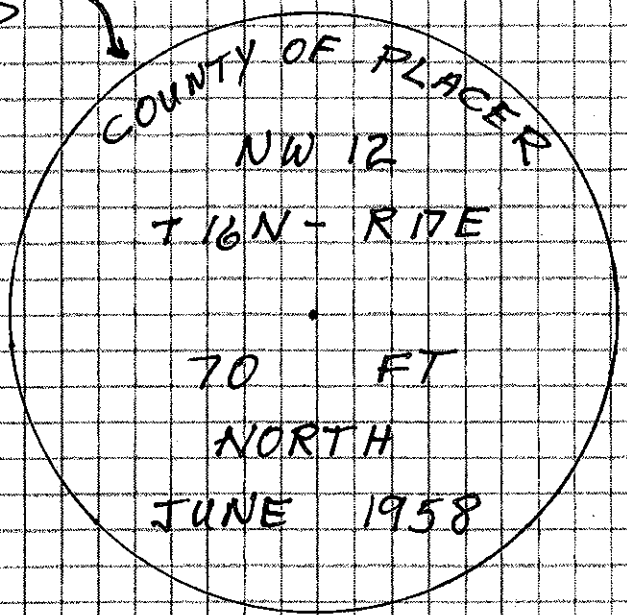
BOOK 11 CORNER RECORDS PAGE 36



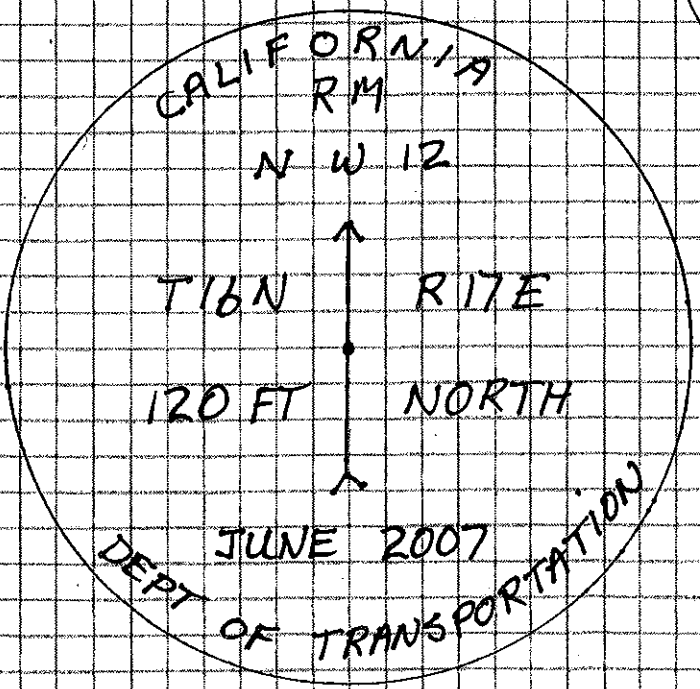
Found 3" Brass Disk



Found 3" Brass Disk NOW DESTROYED



Set 3 1/2" Brass Disk



Basis of Bearing between found monuments as shown on Record of Survey, 3 RS 20