

# CORNER RECORD

# COUNTY OF PLACER, CALIFORNIA

County of Placer

Document Number

Brief Legal Description: Lots 31 and 32, 'H' Maps 93, ORPC



S 29  
T.13N.  
R.8E.

### CORNER TYPE

Government Corner  Control   
 Meander  Property   
 Rancho  Other   
 Date of Survey: \_\_\_\_\_

### COORDINATES (Optional)

N.  
E.  
Zone Datum  
Elev.

Corner — Left as found  Found and tagged  Established  Reestablished  Rebuilt

Identification and type of corner found: Evidence used to identify or procedure used to establish or reestablish corner:  
 Found rail road spikes in the Centerline of Professional Drive as shown on sketch.

A description of the physical condition of the monument as found and as set or reset:

Corners of Lots 31 and 32 set 3/4" iron pin with copper collar stamped LS 4751 in record positions as shown on sketch

### SURVEYOR'S STATEMENT

This Corner Record was prepared by me or under my direction in conformance with the Land

Surveyor's Act on 12.28.2007 2007.

Signed [Signature] 12.28.2007 L.S. or R.C.E. Number: LS 4751

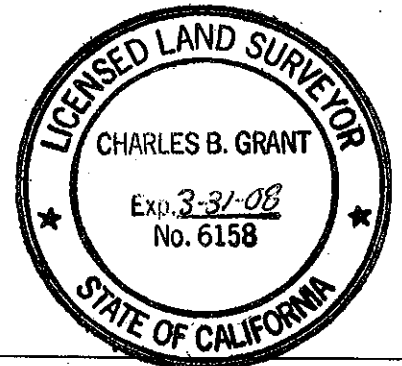


### COUNTY SURVEYOR'S STATEMENT

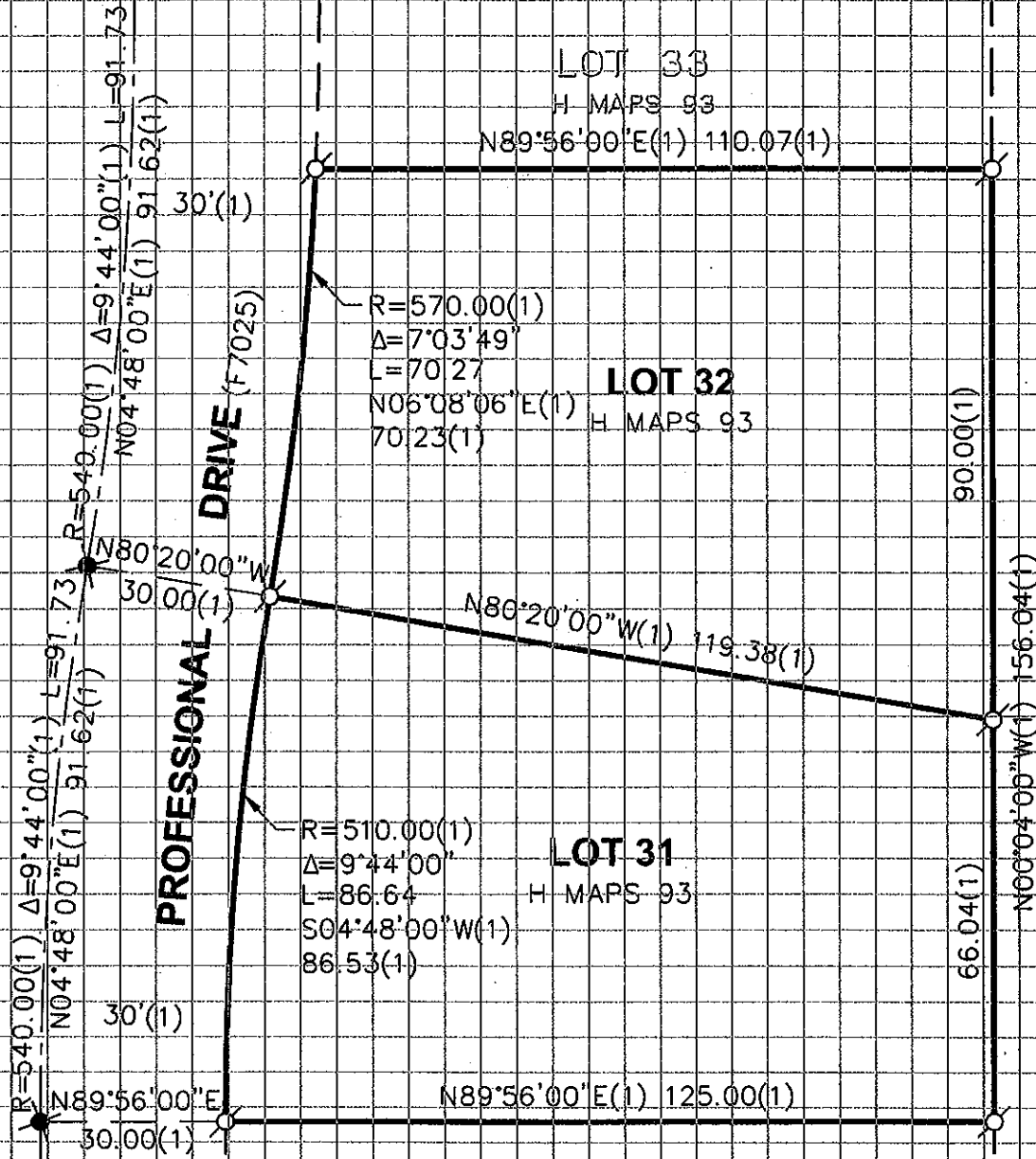
This Corner Record was received DEC. 31 2007 and examined

and filed JANUARY 15 2008 ~~2007~~.

Signed [Signature] LS 6158 Title DEPUTY COUNTY SURVEYOR



County Surveyor's Comment \_\_\_\_\_



LOT 33

H MAPS 93

N89°56'00"E(1) 110.07(1)

LOT 32

H MAPS 93

LOT 31

H MAPS 93

LOT 30

H MAPS 93

PROFESSIONAL DRIVE (F7025)

**LEGEND**

- ✱... FOUND RAIL ROAD SPIKE (3/4" IRON PIN)(1)
- ... SET 3/4" IRON PIN WITH COPPER COLLAR STAMPED I.S. 4751
- (1)... RECORD PER 'H' MAPS 93, ORPC

