

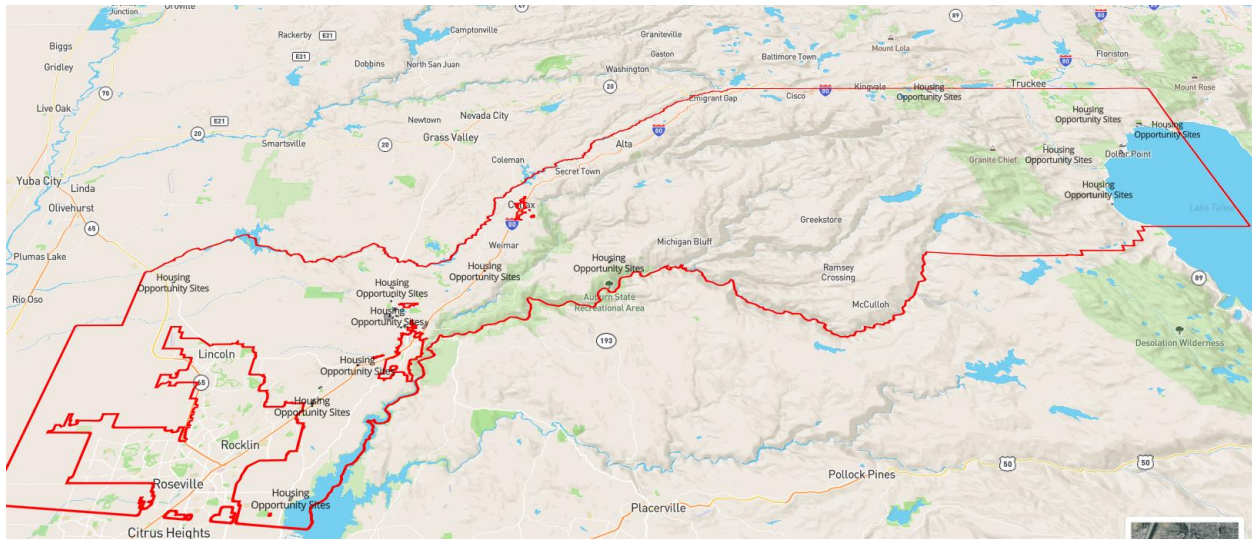


Affordable/Multifamily Housing Opportunity Sites Map

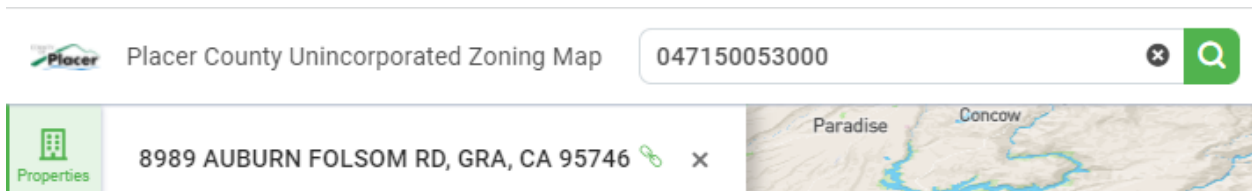
Navigation Guide

(Updated March 2022)

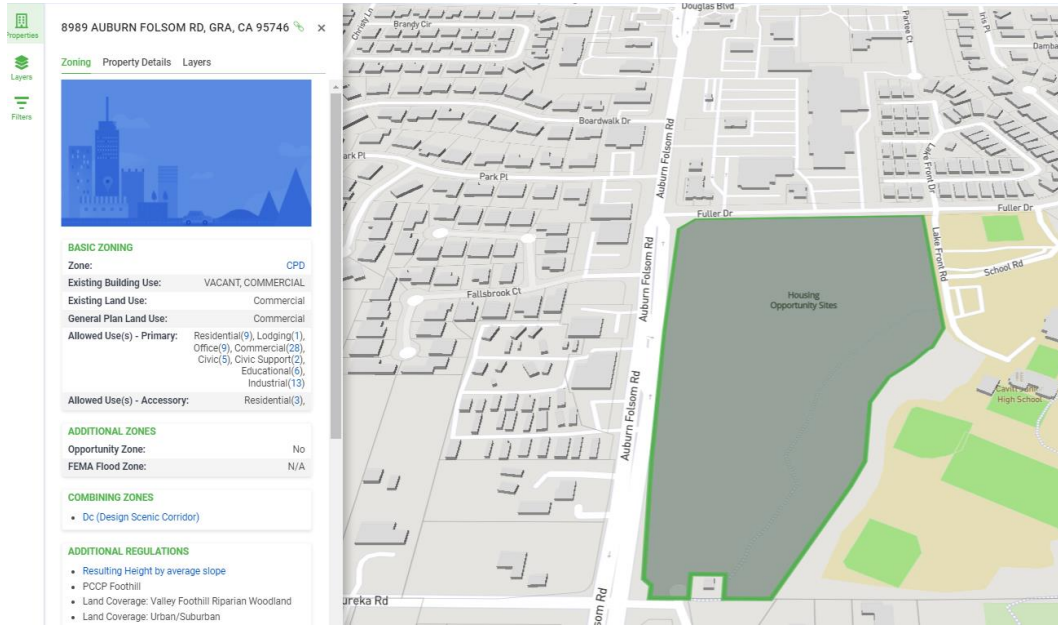
1. [Click to view where affordable housing/multifamily housing opportunity sites are located in Placer County.](#)
2. Zoom in on the map to get a closer look at specific Opportunity Sites.



3. If you know the APN or Address of the parcel you are interested in, enter it in the search bar at the top of the page and click on the green search box:



- A Zoning pop-up will appear in the left sidebar with more information about the site, including current zoning, allowed uses, and residential density. Please let Devin McNally (dmcnally@placer.ca.gov) if you see any errors or experience any issues using Gridics.



- For more information about this parcel, click on the Property Details and a pop-up will appear in the left sidebar with more information about the site, including lot area, Assessor Maps and Permit Records, and Service Districts.

