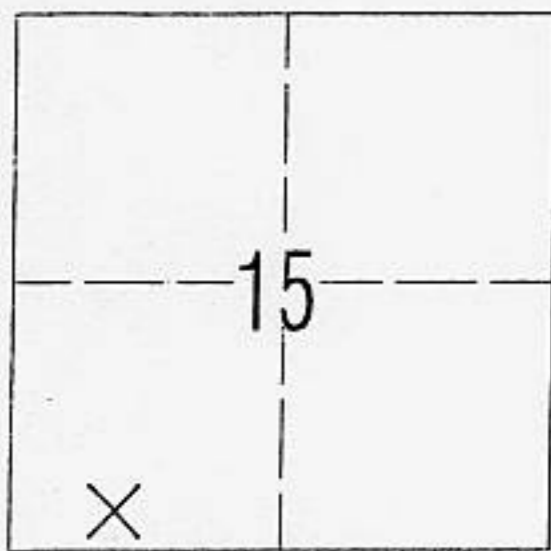


# CORNER RECORD

DOCUMENT NUMBER \_\_\_\_\_

TOWN OF AGATE BAY COUNTY OF PLACER, CALIFORNIA

BRIEF LEGAL DESCRIPTION LOT 210, AGATE BAY UPLANDS SOUTH, PLACER COUNTY, CALIFORNIA, BK H/MAPS/PG. 47



### CORNER TYPE

GOVERNMENT CORNER  CONTROL   
 MEANDER  PROPERTY   
 RANCHO  OTHER   
 DATE OF SURVEY AUGUST 28, 2002

### COORDINATES (Optional)

N. \_\_\_\_\_  
 E. \_\_\_\_\_  
 ZONE \_\_\_\_\_ DATUM \_\_\_\_\_  
 ELEV. \_\_\_\_\_

T.16N., R.17E., MDM

**CORNER** -LEFT AS FOUND  FOUND AND TAGGED  ESTABLISHED  REESTABLISHED  REBUILT

IDENTIFICATION AND TYPE OF CORNER FOUND: EVIDENCE USED TO IDENTIFY OR PROCEDURE USED TO ESTABLISH OR REESTABLISH THE CORNER:

- FOUND MONUMENT AS SHOWN HEREON
- USED NEAREST FOUND MONUMENTS WITHIN UNIT TO REESTABLISH PROPERTY CORNERS AS SHOWN HEREON.

A DESCRIPTION OF THE PHYSICAL CONDITION OF THE MONUMENT AS FOUND AND AS SET OR RESET:

- SET MONUMENT AS SHOWN
- FOUND MONUMENTS IN GOOD CONDITION.
- CLEARED BRUSH AND PLACED LATH AT FOUND AND SET MONUMENTS.

### SURVEYOR'S STATEMENT

THIS CORNER RECORD WAS PREPARED BY ME OR UNDER MY DIRECTION IN CONFORMANCE WITH

THE LAND SURVEYORS' ACT ON OCTOBER 21 2002

SIGNED [Signature] L.S. OR R.C.E. NUMBER R.C.E. 20257

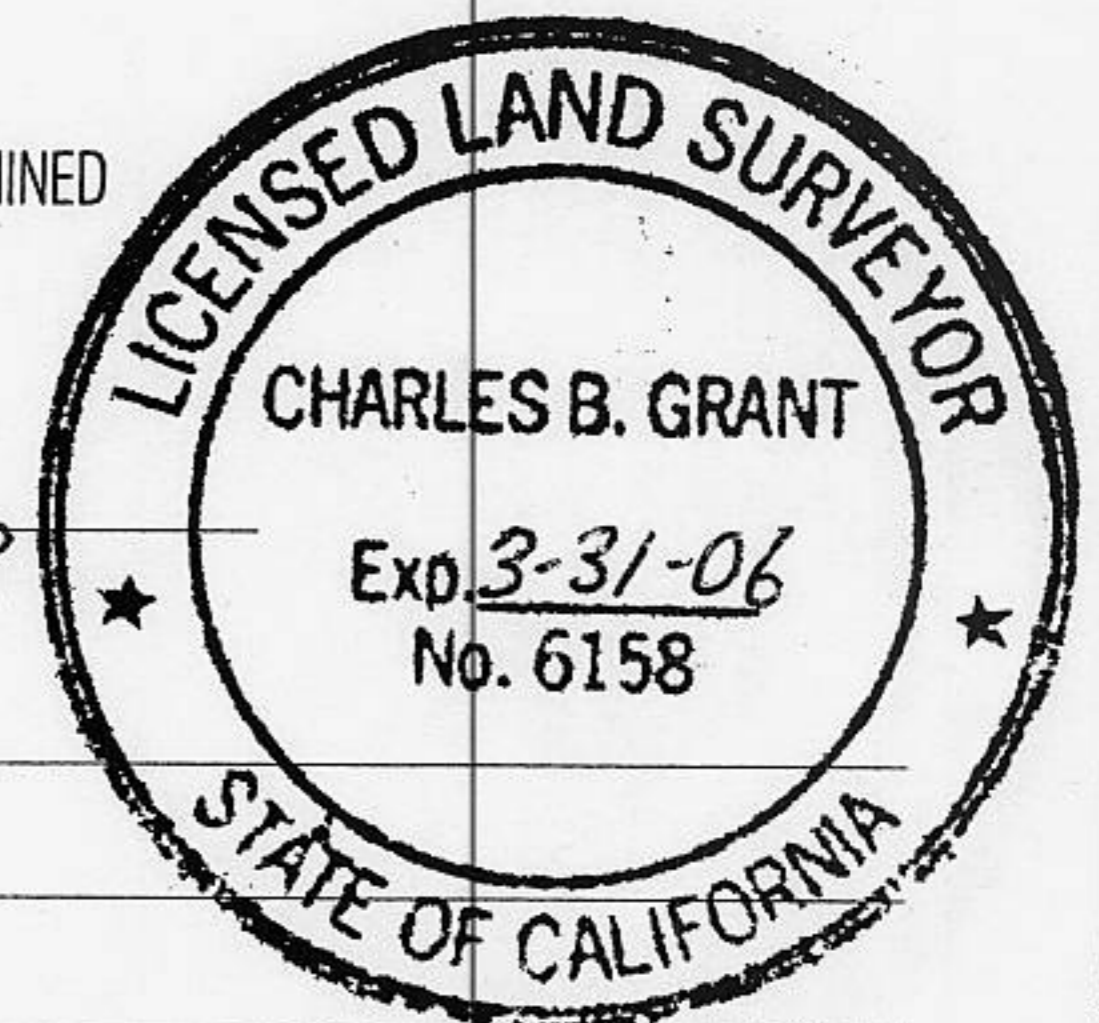


### COUNTY SURVEYOR'S STATEMENT

THIS CORNER RECORD WAS RECEIVED OCTOBER 28 2002 AND EXAMINED

AND FILED JUNE 24 2003

SIGNED Charles B. Grant LS 6158 TITLE DEPUTY COUNTY SURVEYOR



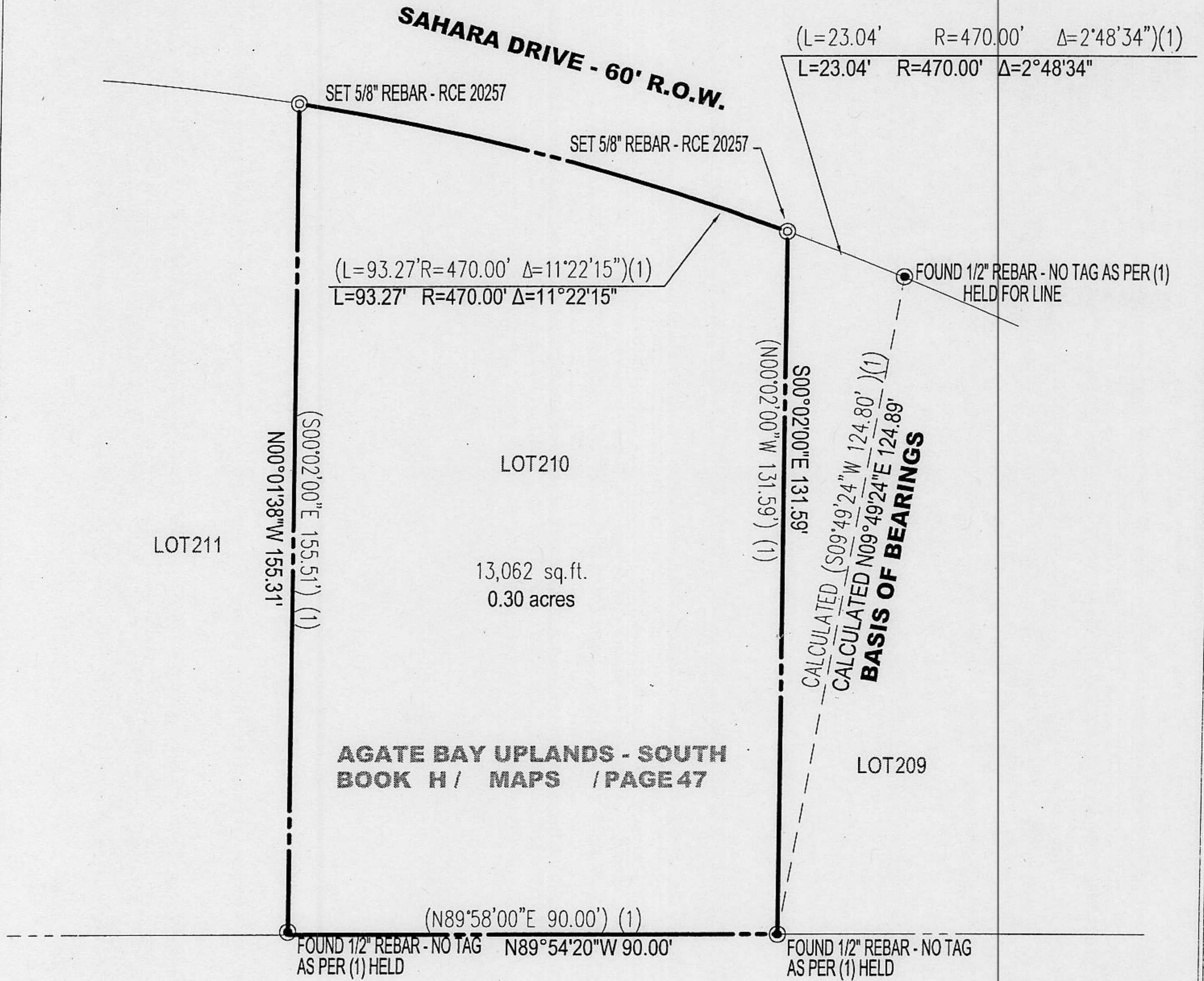
### COUNTY SURVEYOR'S COMMENT :



**NOTES:**

- (1) INFORMATION PER BK H/ Maps/Pg.47
- FOUND MONUMENT AS NOTED
- SET 5/8" REBAR RCE 20257
- RECORD CORNER

▲  
**NORTH**  
**SCALE 1"= 30'**



**BASIS OF BEARINGS:**

THE CALCULATED BEARING S09°49'24"W FROM THE SOUTHEAST CORNER OF LOT 210 TO THE END OF CURVE OF 470.00 FEET RADIUS CURVE ON THE SOUTHERN BOUNDARY OF SAHARA DRIVE R.O.W. AND THE NORTHERN BOUNDARY OF LOT 209 AS SHOWN PER BOOK H/MAPS/Pg.47 WAS USED AS THE BASIS OF BEARINGS FOR THIS SURVEY AND WAS ESTABLISHED FROM THE MONUMENTS FOUND.