

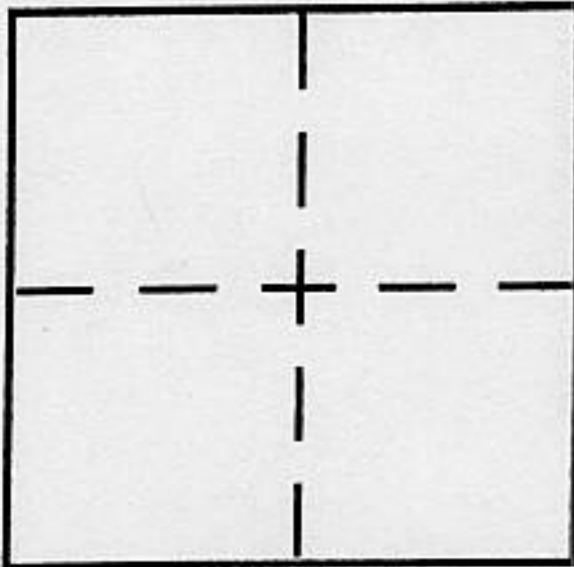
CORNER RECORD

Document Number \_\_\_\_\_

City of \_\_\_\_\_

County of Placer, California

Brief Legal Description Lot 1, Blk G, Carmelian Bay on Lake Tahoe, C 14  
APN 115-040-017



S.22  
T16N  
R17E  
M.D.M

CORNER TYPE

Government Corner  Control   
Meander  Property   
Rancho  Other   
Date of Survey 10/15/02

COORDINATES (Optional)

N. \_\_\_\_\_  
E. \_\_\_\_\_  
Zone \_\_\_\_\_ NAD27  NAD83   
NAD83 Epoch \_\_\_\_\_  
Elev. \_\_\_\_\_  
Vert. Datum: NGVD29  NAVD88   
Meas. Units: Metric  Imperial

Corner - Left as found  Found and tagged  Established  Reestablished  Rebuilt

Identification and type of corner found: Evidence used to identify or procedure used to establish or reestablish the corner:

FOUND MONUMENTS PER C MAPS 14 AND see pg. 2  
14 NOS 113 USED RECORD PER BA 14 NOS 113  
TO RE-ESTABLISH 5TH EAST AND 5TH WEST CORNER OF  
LOT 1 BLOCK G

A description of the physical condition of the monument as found and as set or reset: see pg. 2

SET 3/4 IP & PLUG PLS 4029

SURVEYOR'S STATEMENT

This Corner Record was prepared by me or under my direction in conformance with the Land Surveyor's Act on 11/19 02

Signed Ronald W. Turner P.L.S or R.C.E. No. 4029



COUNTY SURVEYOR'S STATEMENT

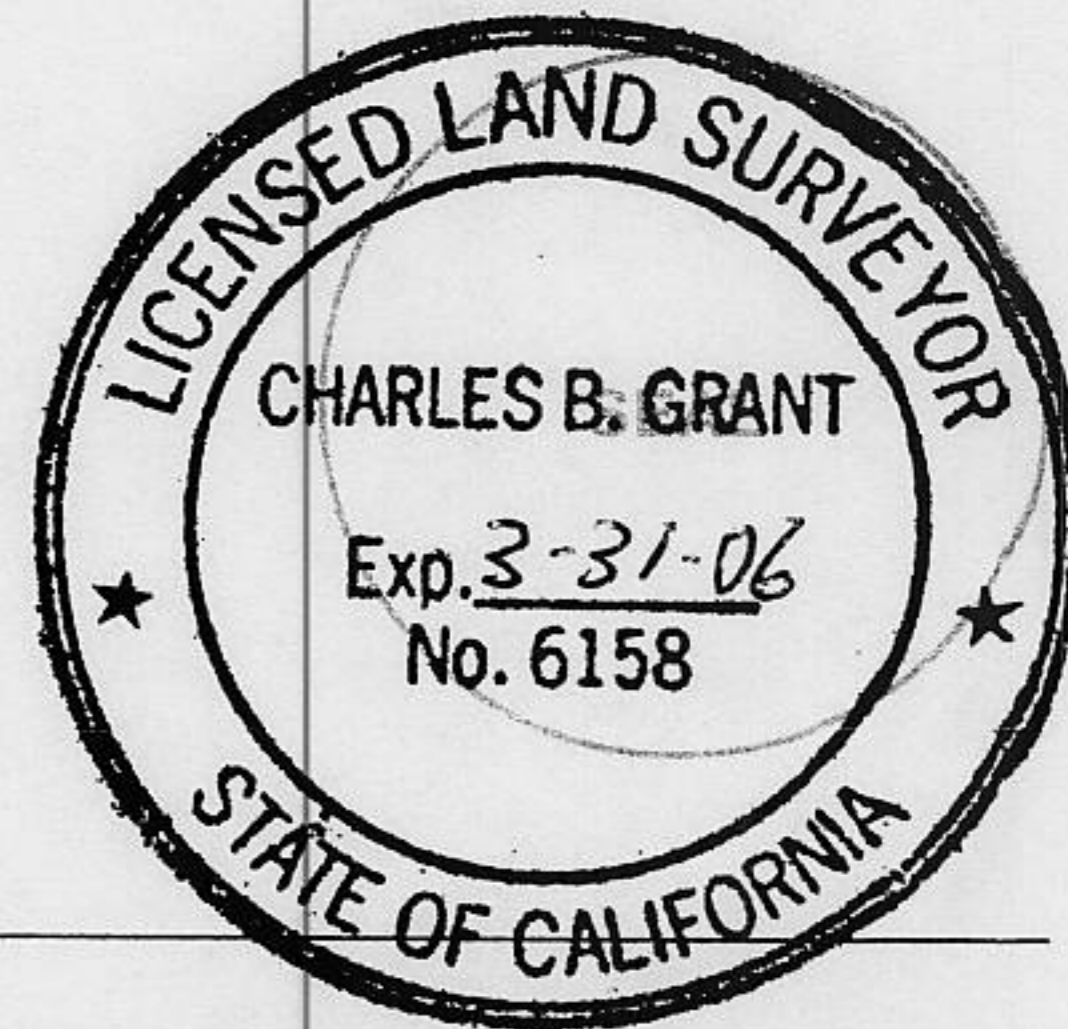
This Corner Record was received November 26, 2002

and examined and filed JULY 30, 2003

Signed Charles B. Grant P.L.S or R.C.E. No. LS 6158

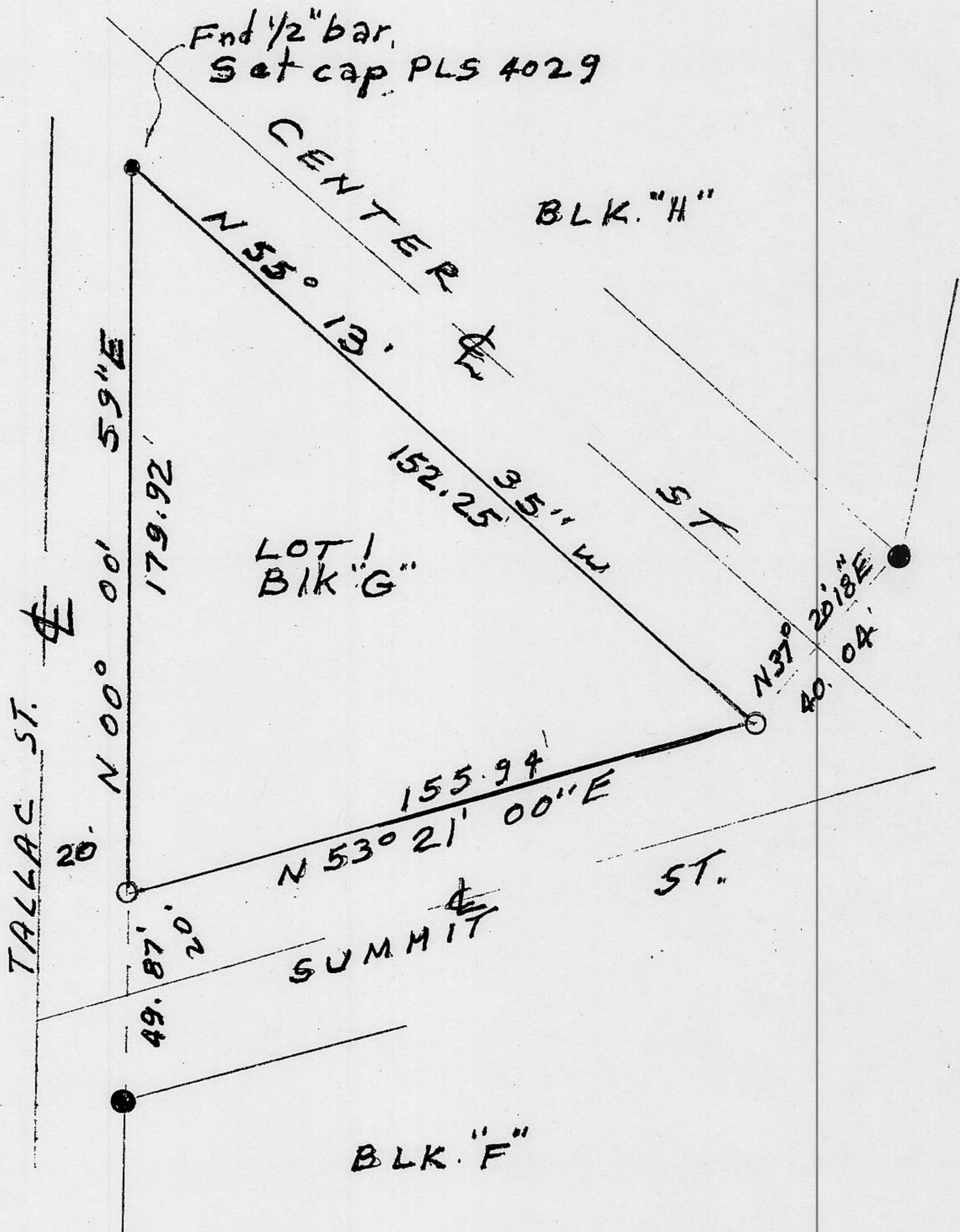
Title DEPUTY COUNTY SURVEYOR

County Surveyor's Comment \_\_\_\_\_



BOOK 8 CORNER RECORDS PAGE 19

N.T.S.



Fnd 1/2" bar.  
Set cap PLS 4029

- ... Fnd 3/4" IP & plug LS. 5549  
PER R.O.S. 14-113 OR AS NOTED
- ... Set 3/4" IP & plug, PLS 4029

02181