

CORNER RECORD

DOCUMENT NUMBER _____

CITY OF TAHOE CITY

COUNTY OF PLACER, CALIFORNIA

BRIEF LEGAL DESCRIPTION LOT9A+ BLOCK -WARD CREEK , COUNTY OF PLACER , CALIFORNIA , BK 16 /Survey PG 35



CORNER TYPE

GOVERNMENT CORNER CONTROL
 MEANDER PROPERTY
 RANCHO OTHER
 DATE OF SURVEY October 17, 2002

COORDINATES (Optional)

N. _____
 E. _____
 ZONE _____ DATUM _____
 ELEV. _____

T.15 N., R.16 E., MDM

CORNER -LEFT AS FOUND FOUND AND TAGGED ESTABLISHED REESTABLISHED REBUILT

IDENTIFICATION AND TYPE OF CORNER FOUND: EVIDENCE USED TO IDENTIFY OR PROCEDURE USED TO ESTABLISH OR REESTABLISH THE CORNER:

FOUND MONUMENT AS SHOWN HEREON

USED NEAREST FOUND MONUMENTS WITHIN UNIT TO REESTABLISH PROPERTY

CORNERS AS SHOWN HEREON.

A DESCRIPTION OF THE PHYSICAL CONDITION OF THE MONUMENT AS FOUND AND AS SET OR RESET:

SET MONUMENT AS SHOWN

FOUND MONUMENTS IN GOOD CONDITION.

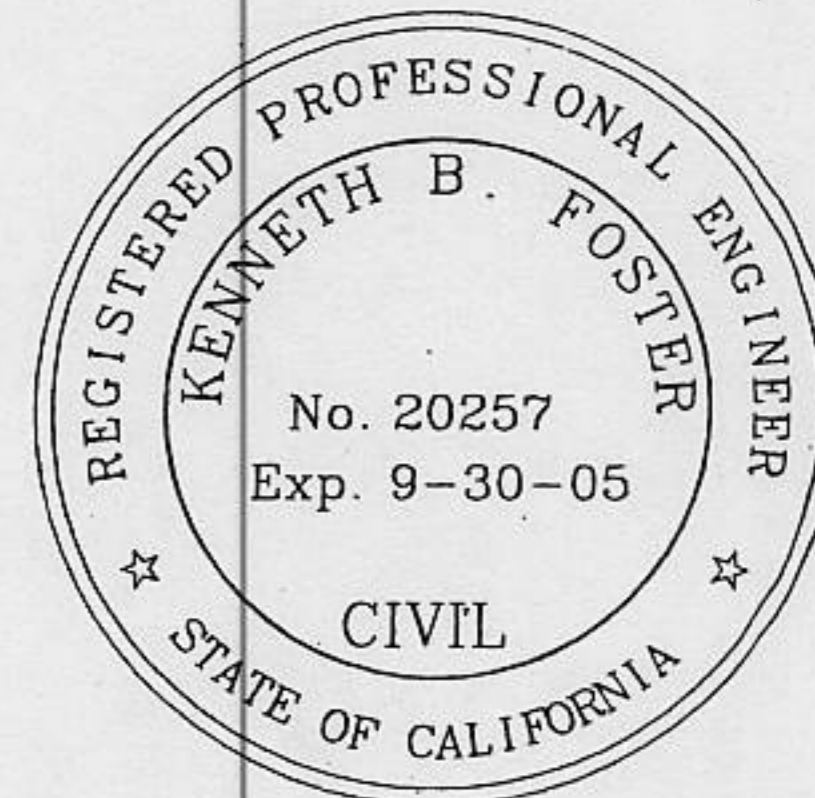
CLEARED BRUSH AND PLACED LATH AT FOUND AND SET MONUMENTS.

SURVEYOR'S STATEMENT

THIS CORNER RECORD WAS PREPARED BY ME OR UNDER MY DIRECTION IN CONFORMANCE WITH

THE LAND SURVEYORS' ACT ON JANUARY 8 2003

SIGNED [Signature] L.S. OR R.C.E. NUMBER R.C.E. 20257

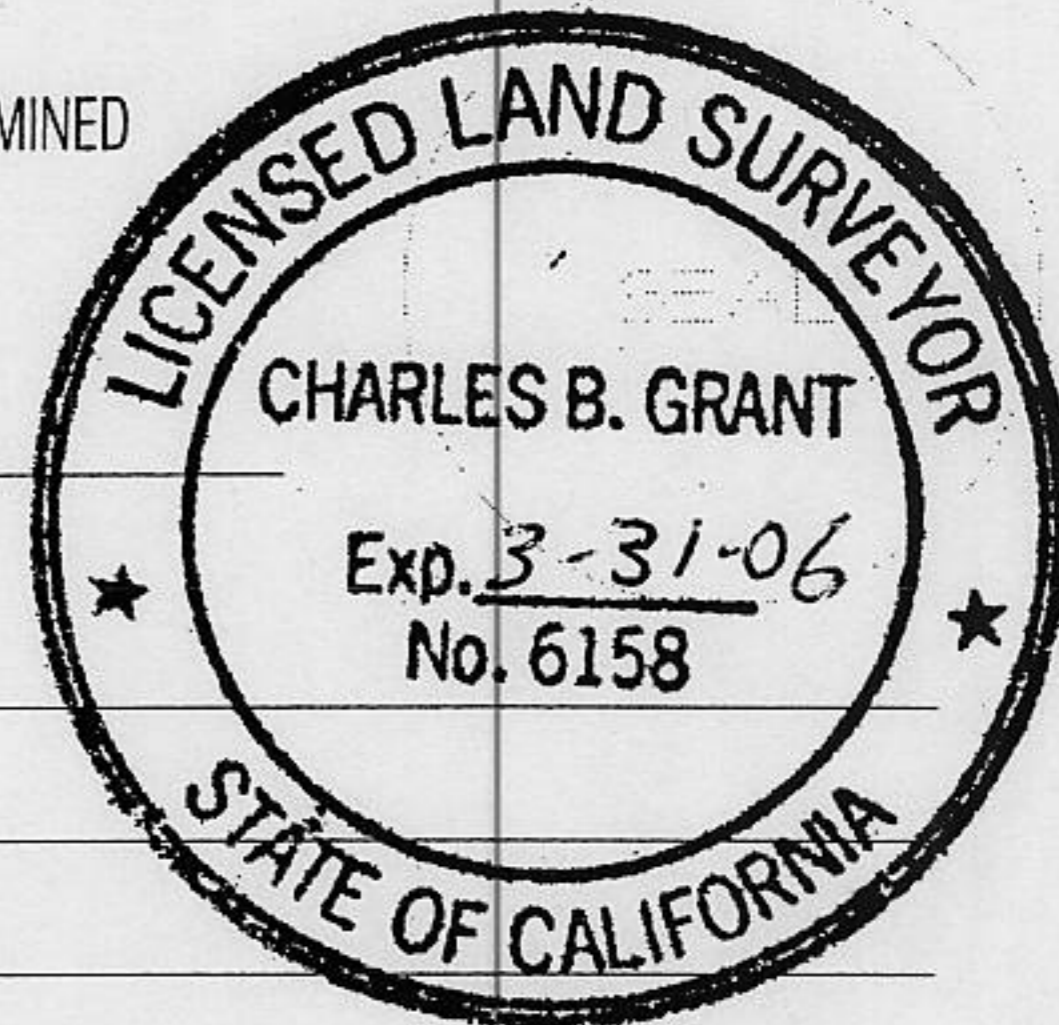


COUNTY SURVEYOR'S STATEMENT

THIS CORNER RECORD WAS RECEIVED JANUARY 15 20 03 AND EXAMINED

AND FILED JULY 30 2003

SIGNED Charles B Grant LS 6158 TITLE DEPUTY COUNTY SURVEYOR



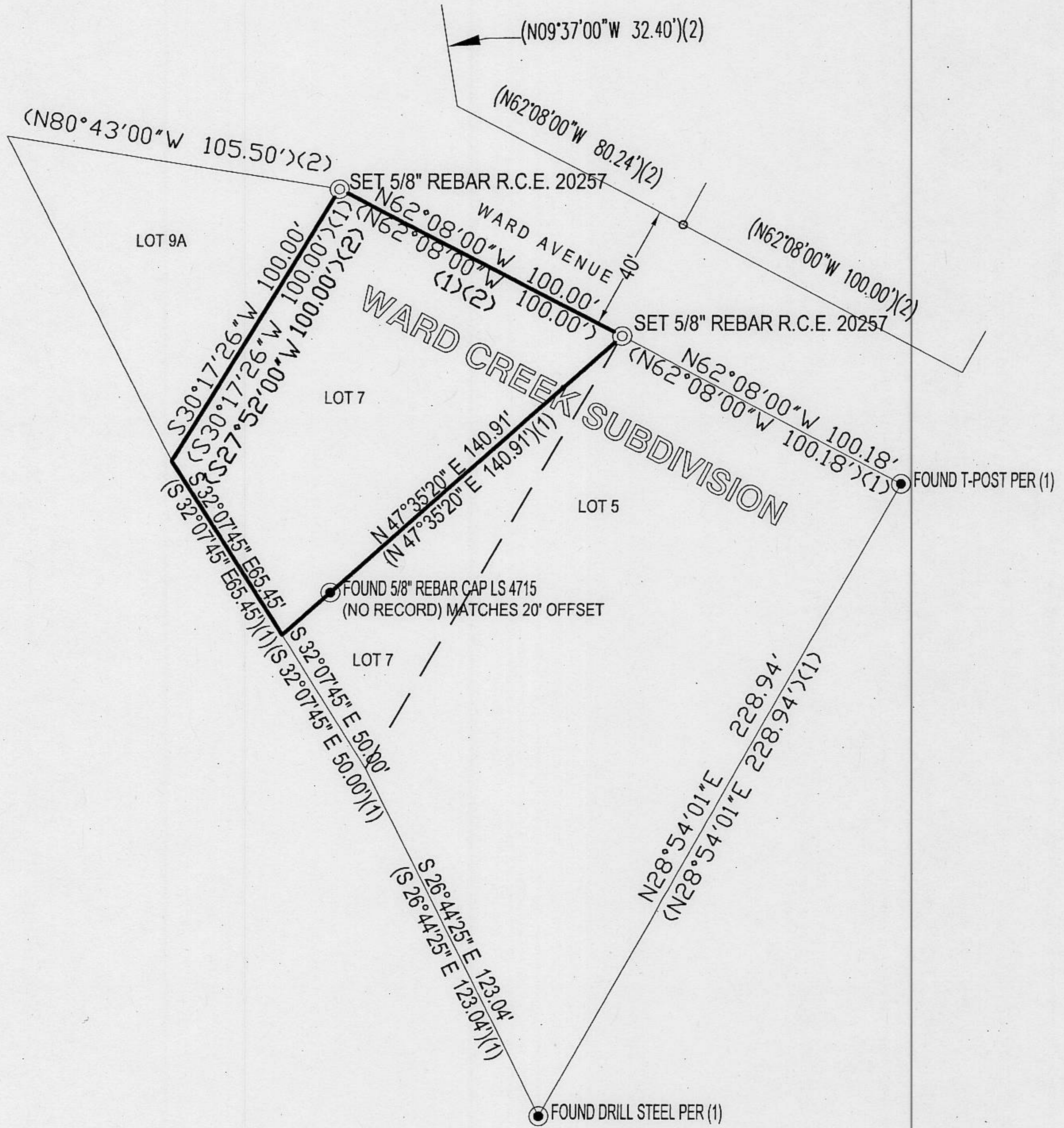
COUNTY SURVEYOR'S COMMENT :

BOOK 8 CORNER RECORDS PAGE 22

NOTES:

- (1) INFORMATION PER BK 16 /SURVEYS / 35
- (2) INFORMATION PER BK *D/ MAPS/ 87*
- FOUND MONUMENT AS NOTED
- SET 5/8" REBAR RCE 20257


NORTH
SCALE 1"=50'



BASIS OF BEARINGS:

THE BEARING N 28°54'01" E ALONG THE SOUTHEAST LINE OF RECORD OF SURVEY NO. 2213 AS SHOWN PER BOOK 16/SURVEYS/Pg.35 WAS USED AS THE BASIS OF BEARINGS FOR THIS SURVEY AND WAS ESTABLISHED FROM THE MONUMENTS FOUND.