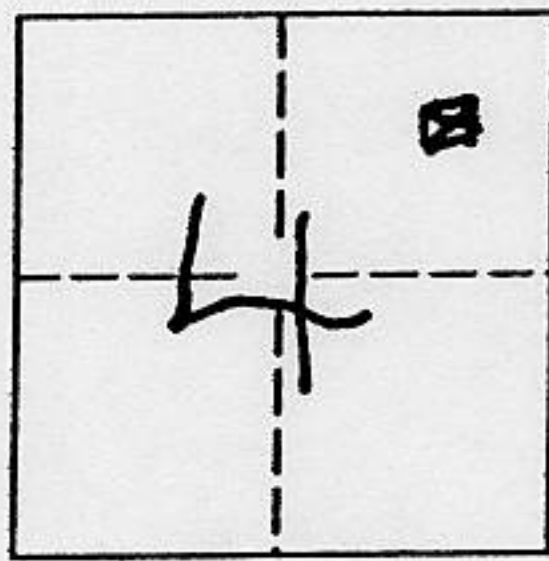


Document Number \_\_\_\_\_

City of unincorporated

County of Placer, California

Brief Legal Description Lot 74, Heather Glen Estates Unit No 1 H/Maps/34



Sec 4  
T13N  
R09E  
M.D.M.

CORNER TYPE

- Government Corner  Control
- Meander  Property
- Rancho  Other

Date of Survey July 2003

COORDINATES(Optional)

- N. \_\_\_\_\_
- E. \_\_\_\_\_
- Zone \_\_\_\_\_ NAD27  NAD83
- NAD83 Epoch \_\_\_\_\_
- Elevation \_\_\_\_\_
- Vert. Datum: NGVD29  NAV88
- Meas. Units: Metric  Imperial

Corner - Left as found  Found and tagged  Established  Reestablished  Rebuilt

Identification and type of corner found: Evidence used to identify or procedure used to establish or reestablish the corner:

see sketch on reverse

FOUND MONUMENTS PER H MAPS 31. RESET SOUTHERLY CORNERS OF LOT 74 IN RECORD POSITION

A description of the physical condition of the monument as found and as set or reset:

see sketch on reverse

SET 5/8" REBAR & CAP LS 6230

SURVEYOR'S STATEMENT

This Corner Record was prepared by me or under my direction in conformance with the Land Surveyor's Act on 27 June, 2003.

Signed [Signature] P.L.S. or R.C.E. Number LS6230



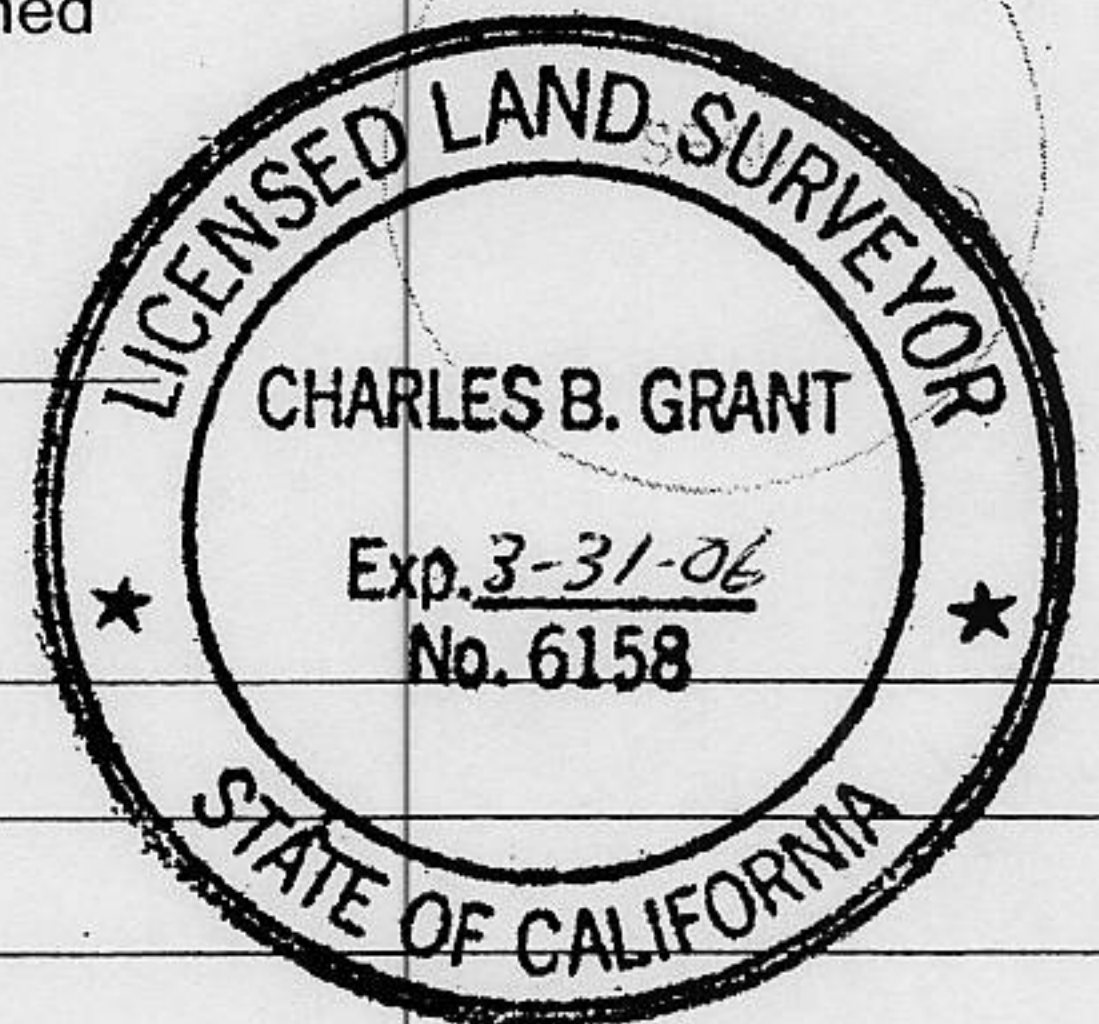
COUNTY SURVEYOR'S STATEMENT

This Corner Record was received SEPT. 19, 2003 and examined and filed SEPT 19, 2003.

Signed Charles B. Grant P.L.S. or R.C.E. Number LS6158

Title DEPUTY COUNTY SURVEYOR

County Surveyor's Comment \_\_\_\_\_

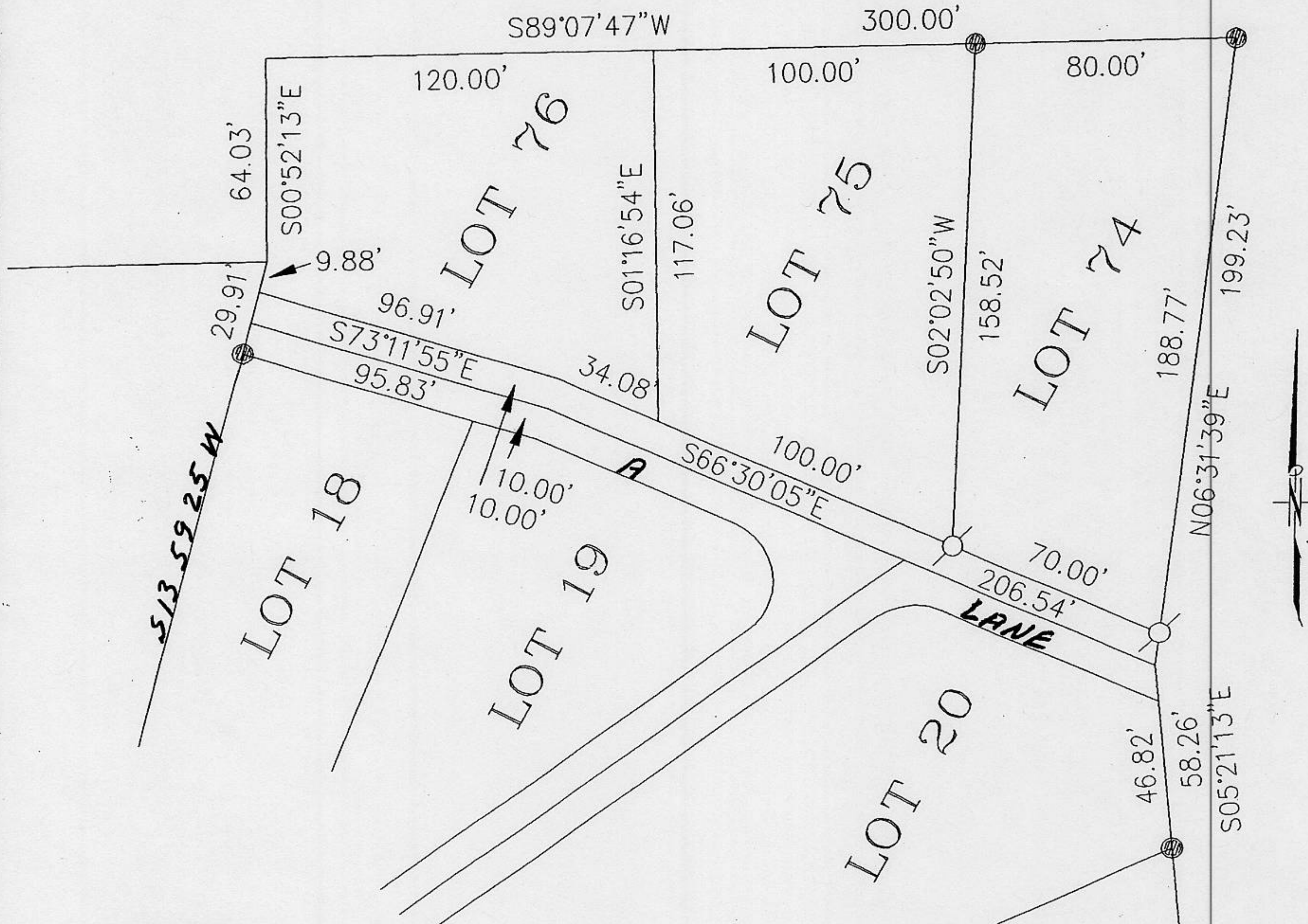


BOOK 8 CORNER RECORDS PAGE 47



# PLAT OF SURVEY

OF LOT 74 OF HEATHER GLENN ESTATES UNIT No. 1  
 A PORTION OF SECTION 4, TOWNSHIP 13 NORTH, RANGE 09 EAST, M.D.M.  
 COUNTY OF PLACER STATE OF CALIFORNIA  
 JULY 2003 SCALE 1" = 60'



## LEGEND

- FOUND 1/2" REBAR, NO TAG, PER H/MAPS/31
  - SET 5/8" REBAR WITH PLASTIC CAP LS 6230"
- ALL DIMENSIONS ARE RECORD PER H/MAPS/31



PREPARED BY:  
 TRI STATE SURVEYING, LTD.  
 477 KEENA, AUBURN, CALIF. 95603  
 ph: 503/889-2121 fx: 530/889-2630