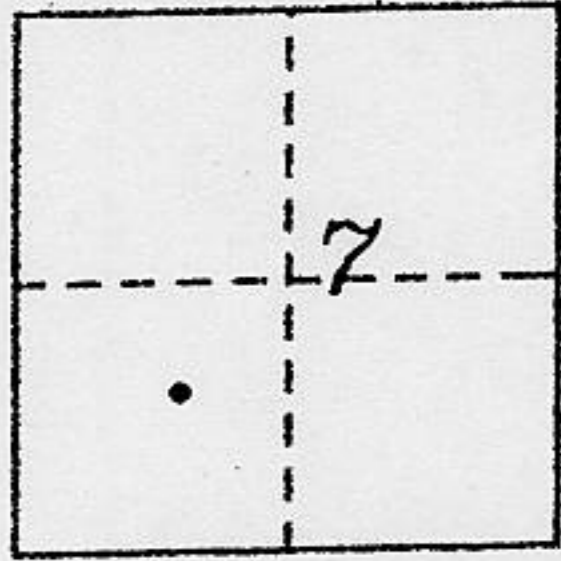


CORNER RECORD

COUNTY OF PLACER, CALIFORNIA

City of \_\_\_\_\_ Document Number \_\_\_\_\_

Brief Legal Description Lot 180, Chamberlands Unit E. "G" Maps 61



T.14 N., R.17E.,

CORNER TYPE

COORDINATES (Optional)

Government Corner  Control  N. \_\_\_\_\_  
 Meander  Property  E. \_\_\_\_\_  
 Rancho  Other  Zone \_\_\_\_\_ Datum \_\_\_\_\_  
 Date of Survey November 2002 Elev. \_\_\_\_\_

Corner— Left as found  Found and tagged  Established  Reestablished  Rebuilt

Identification and type of corner found: Evidence used to identify or procedure used to establish or reestablish corner:

● ~ found monument as noted

A description of the physical condition of the monument as found and as set or reset:

∅ ~ set 5/8" rebar with 2" aluminum cap LS 5886

SURVEYOR'S STATEMENT

This Corner Record was prepared by me or under my direction in conformance with the Land

Surveyor's Act on February 12 2003

Signed [Signature] L.S. or R.C.E. Number 5886

Thomas C. Buswell



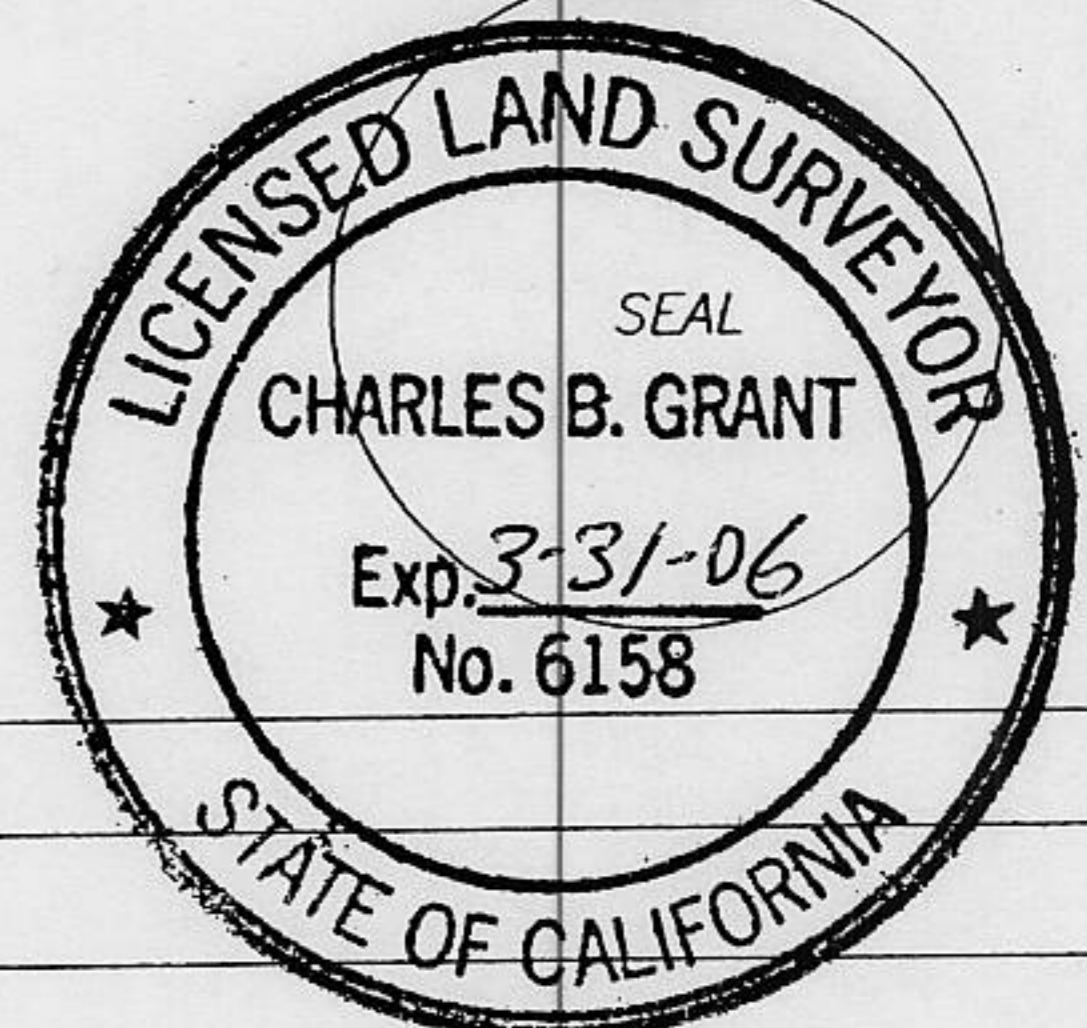
COUNTY SURVEYOR'S STATEMENT

This Corner Record was Received OCT 2 2003 and Examined

and filed OCT. 2 2003

Signed [Signature] Title DEPUTY COUNTY SURVEYOR  
LS 6158

County Surveyor's Comment \_\_\_\_\_

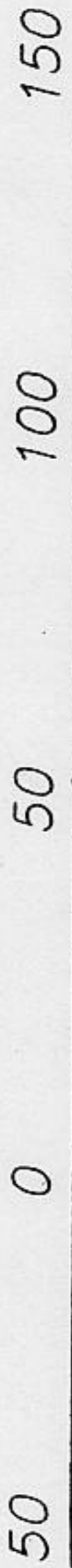


BOOK 8 CORNER RECORDS PAGE 51

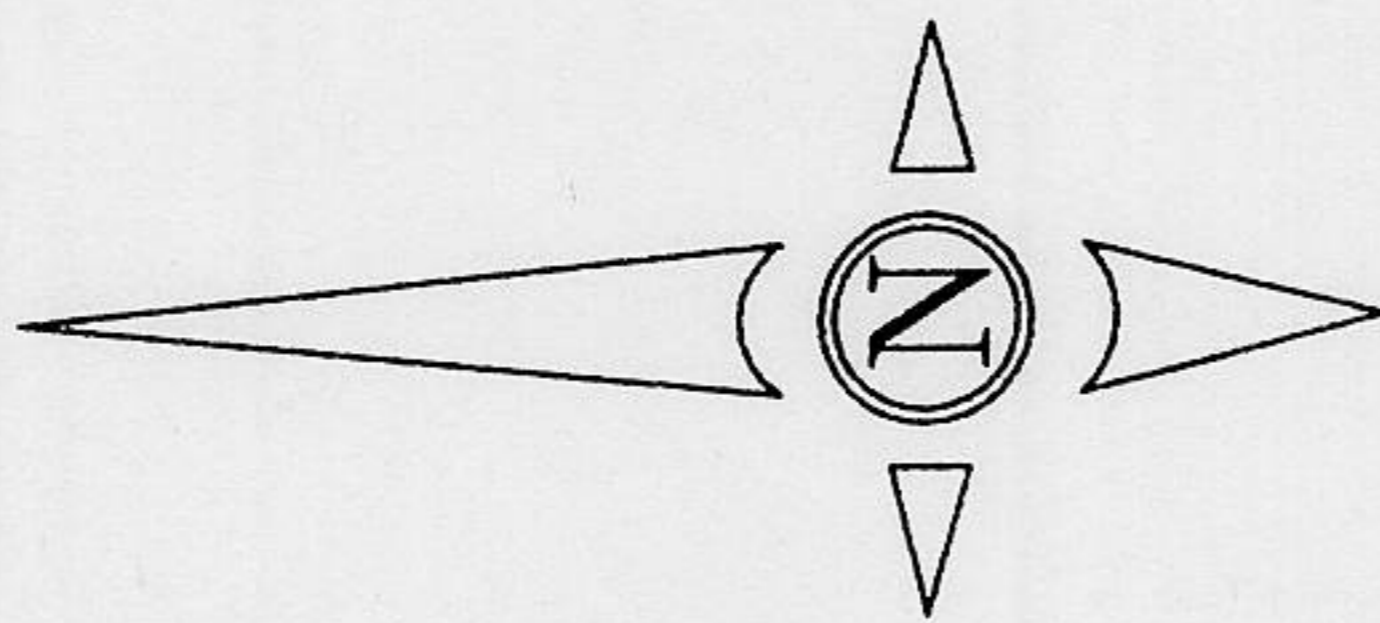
fd. nail in a.c. at corner position, no known record reset as indicated

o ~ dimension point only (C) ~ calculated from (R1)

(R1) ~ record as per "G" Maps 61

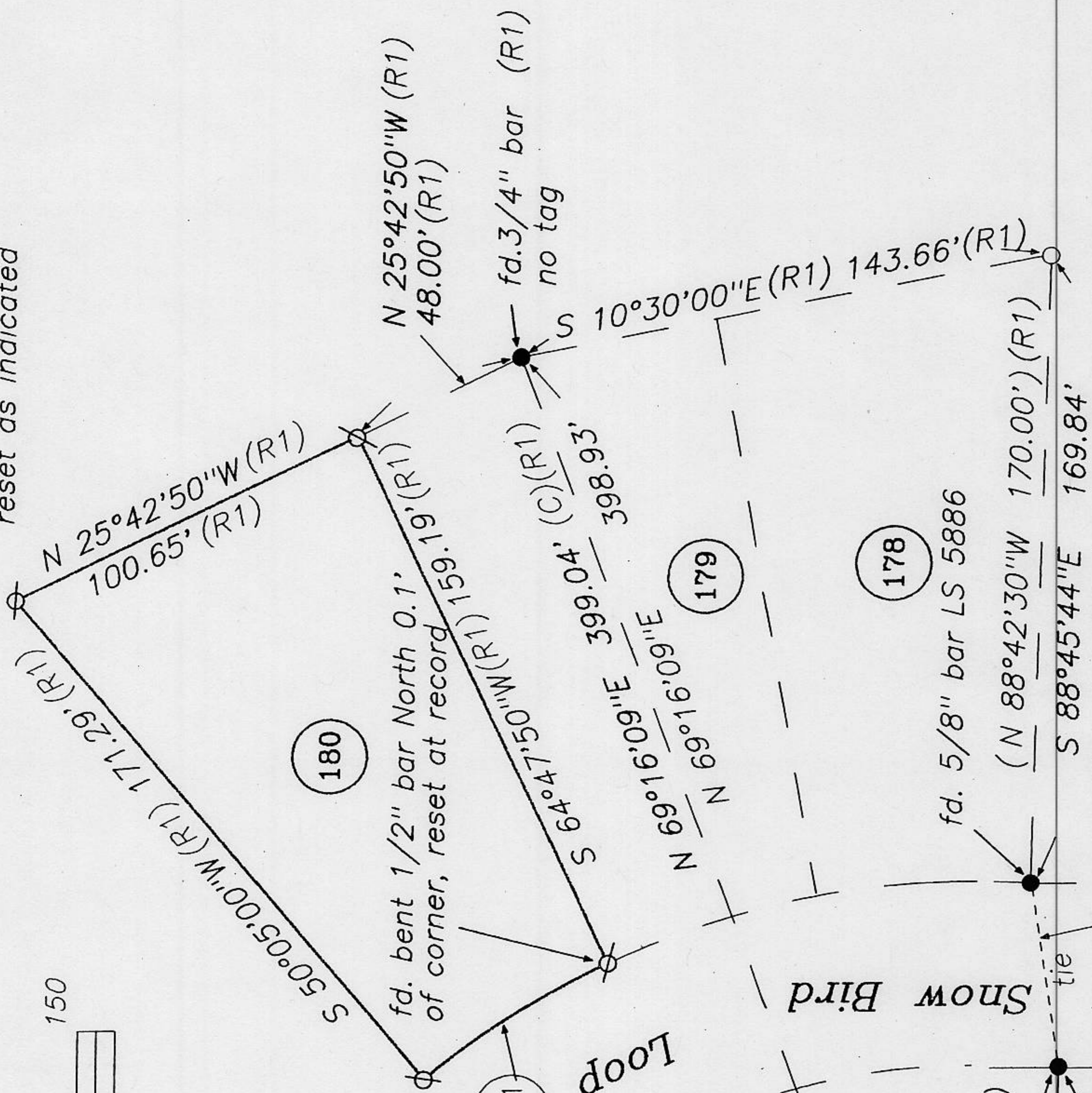


GRAPHIC SCALE - FEET



SCALE 1" = 50'

Basis of Bearings



	CURVE	RADIUS	TANGENT	LENGTH	DELTA	DEGREE	CHORD	CH. BEARING
C-1	225.00'	(R1)	29.05'	57.77'	14°42'42"	25°27'53"	57.61'	(57.62')(R1) N 32°33'35"W (R1)