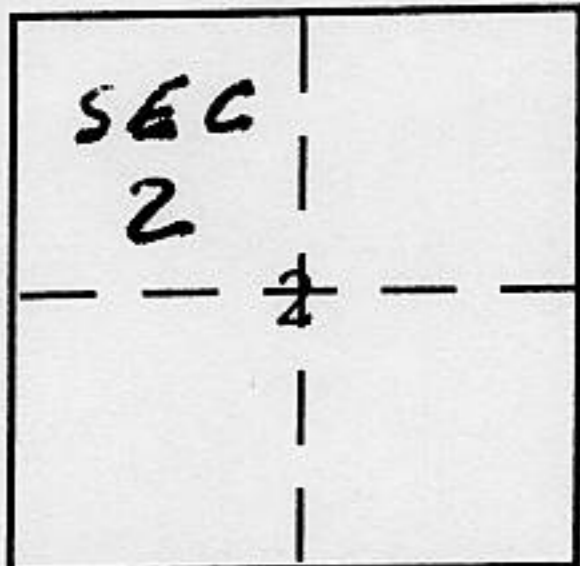


CORNER RECORD

Document Number _____

City of _____ County of Placer, California

Brief Legal Description (14 PM 76) NW 1/4 Section 2, T 11 N, R 7 E, MDM



CORNER TYPE

Government Corner Control
 Meander Property
 Rancho Other
 Date of Survey August 29, 2003

COORDINATES (Optional)

N. _____
 E. _____
 Zone _____ NAD27 NAD83
 NAD83 Epoch _____
 Elev. _____
 Vert. Datum: NGVD29 NAVD88
 Meas. Units: Metric Imperial

Corner - Left as found Found and tagged Established Reestablished Rebuilt

Identification and type of corner found: Evidence used to identify or procedure used to establish or reestablish the corner:
Found 3/4" Rebars tagged LS 2846 and 5" x 5" Concrete Highway Monuments per 14 PM 76 as shown on sketch.

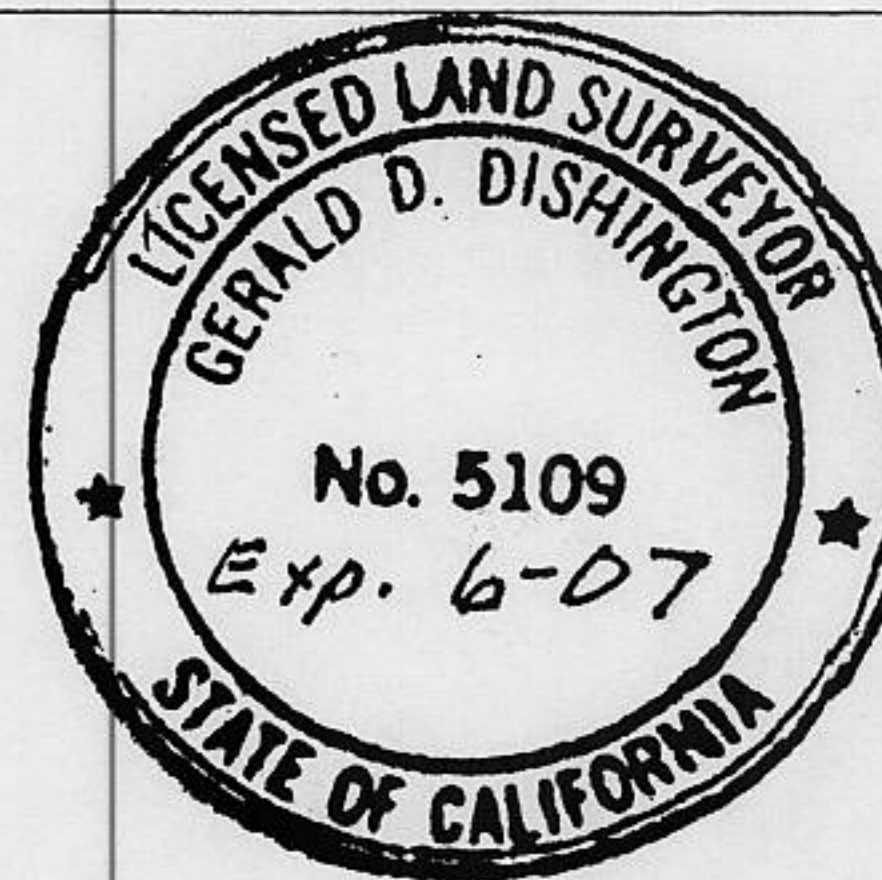
Found 5/8" Rebar tagged LS 4519 in concrete, no record and a 3/4" Rebar, no tag and no record as shown on sketch.

A description of the physical condition of the monument as found and as set or reset:
Set 3/4" Rebar with Plastic Cap stamped PLS 5109 at NE and SE Corners of Parcel D (14 PM 76).

SURVEYOR'S STATEMENT

This Corner Record was prepared by me or under my direction in conformance with the Land Surveyor's Act on August 29, 2003

Signed Gerald D. Dishington P.L.S or R.C.E. No. PLS 5109



COUNTY SURVEYOR'S STATEMENT

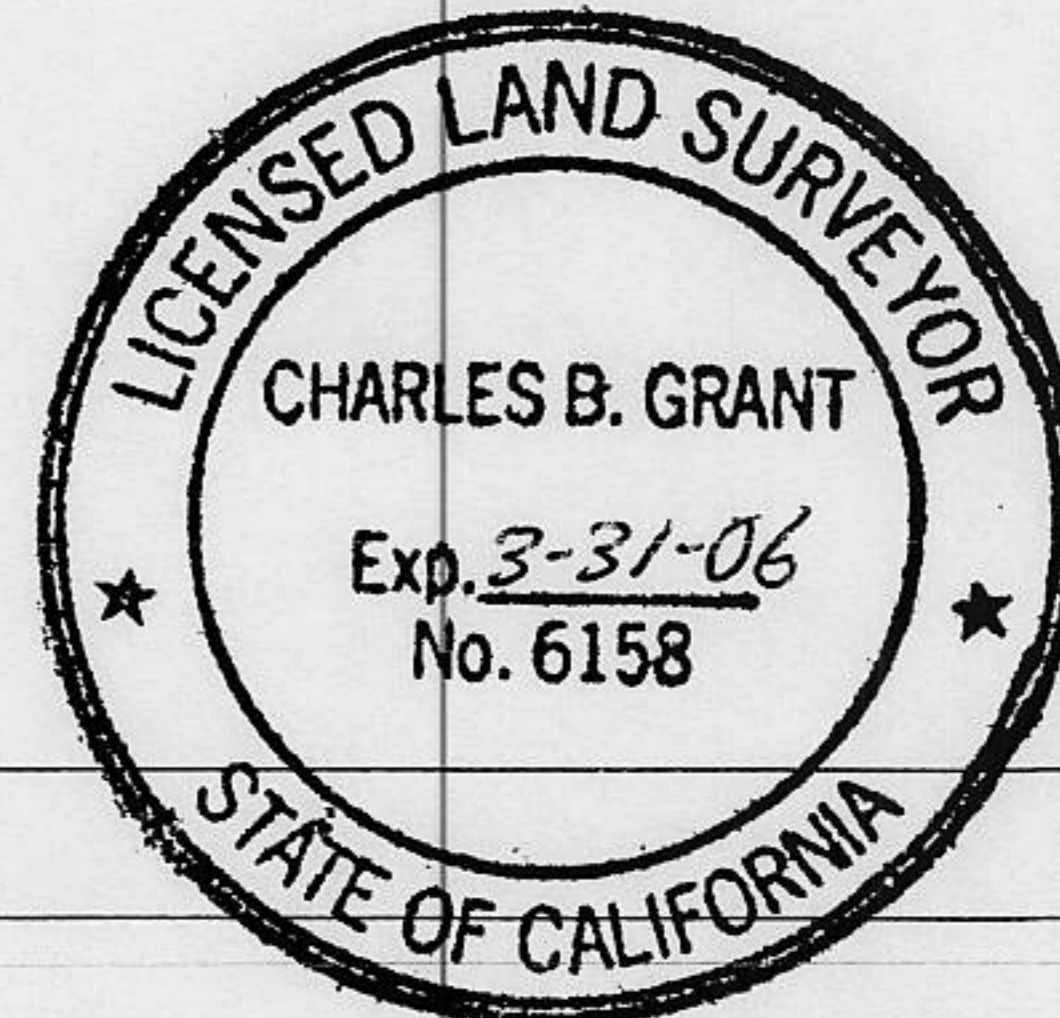
This Corner Record was received OCT. 2, 2003

and examined and filed OCT. 2, 2003

Signed Charles B. Grant P.L.S or R.C.E. No. LS 6158

Title DEPUTY COUNTY SURVEYOR
LS 6158

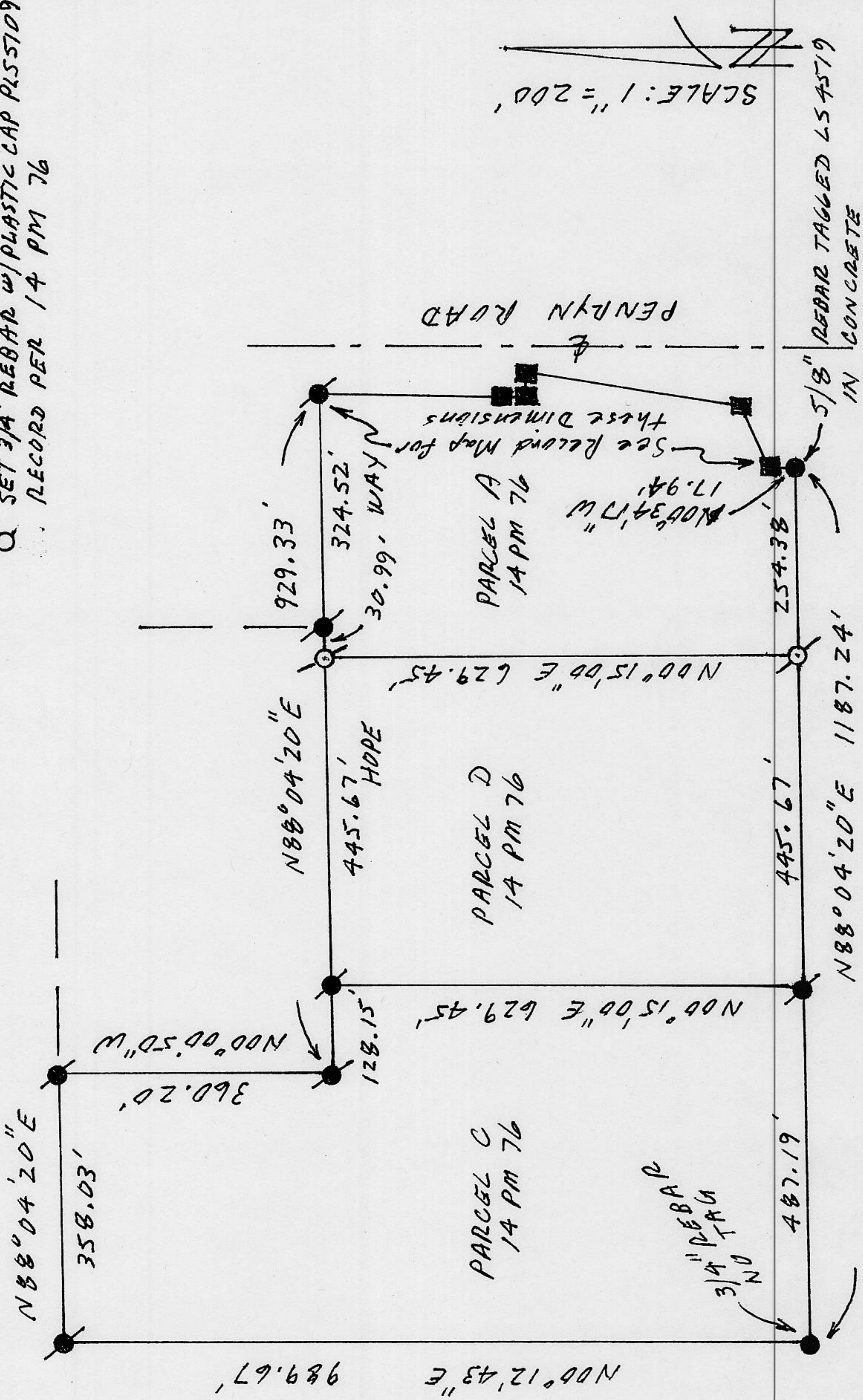
County Surveyor's Comment _____



BOOK 8 CORNER RECORDS PAGE 55

LEGEND

- FOUND 3/4" REBAR TAGGED L52846 (1)
- FOUND 5" x 5" CONCRETE HIGHWAY MON. (1)
- FOUND MONUMENT AS NOTED
- SET 3/4" REBAR w/ PLASTIC CAP PLS5709
- RECORD PER 14 PM 76



SCALE: 1" = 200'

030024