

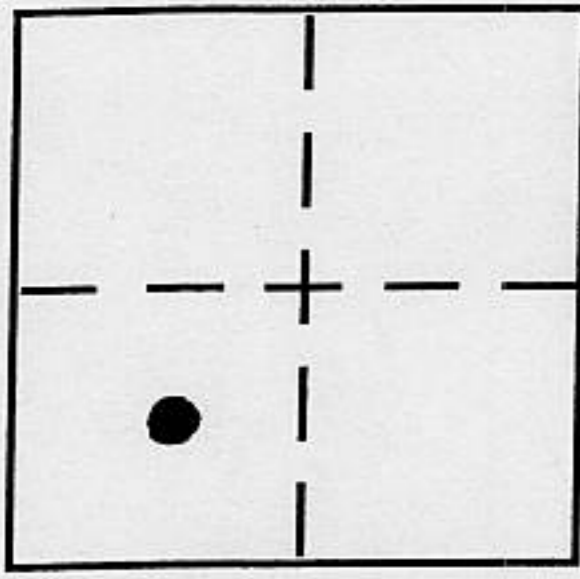
CORNER RECORD

Document Number _____

City of UNINCORPORATED AREA

County of PLACER, California

Brief Legal Description LOT 193 LAHONTAN UNIT NO. 14
BOOK "U" OF MAPS PAGE 1 P.C.R.



SEC. 25
T. 17N.
R. 16E.
M.D.M.

CORNER TYPE

Government Corner Control
 Meander Property
 Rancho Other
 Date of Survey 9/2/03

COORDINATES (Optional)

N. _____
 E. _____
 Zone _____ NAD27 NAD83
 NAD83 Epoch _____
 Elev. _____
 Vert. Datum: NGVD29 NAVD88
 Meas. Units: Metric Imperial

Corner - Left as found Found and tagged Established Reestablished Rebuilt

Identification and type of corner found: Evidence used to identify or procedure used to establish or reestablish the corner:

● = FOUND 3/4" REBAR W/ PLASTIC CAP, L.S. 4715

A description of the physical condition of the monument as found and as set or reset:

○ = SET NAIL + TAG L.S. 5549 IN CONCRETE PAD

JN. 03135

SURVEYOR'S STATEMENT

This Corner Record was prepared by me or under my direction in conformance with the Land Surveyor's Act on SEPTEMBER 3 2003

Signed Charles R. Sage Jr. P.L.S or R.C.E. No. L.S. 5549
LIC. EXP. 6-30-05

COUNTY SURVEYOR'S STATEMENT

This Corner Record was received OCTOBER 14TH 2003

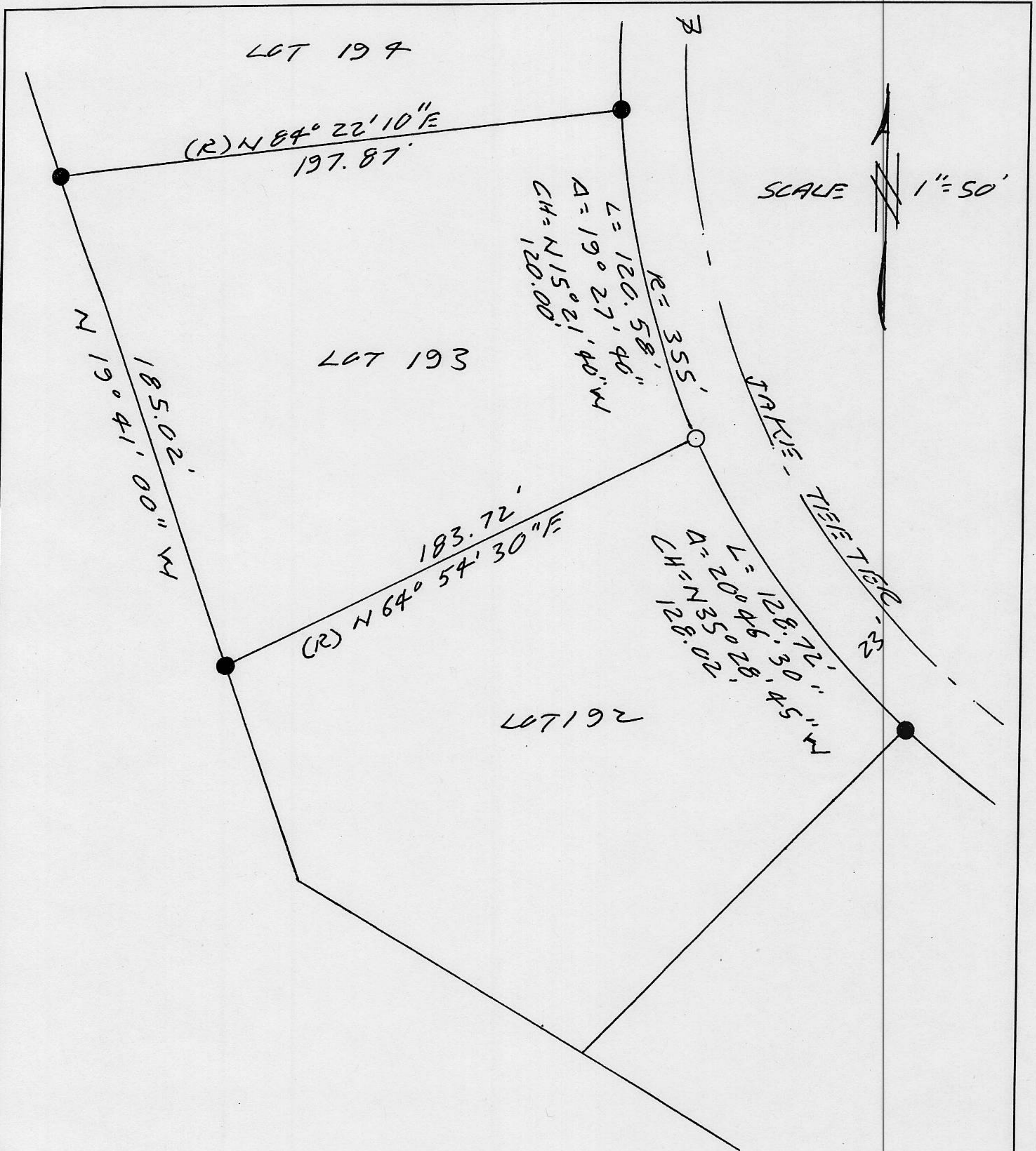
and examined and filed Nov. 6, 2003

Signed Charles B. Grant P.L.S or R.C.E. No. LS 6158

Title DEPUTY COUNTY SURVEYOR

County Surveyor's Comment _____





NOTE: THE BEARINGS AND DISTANCES SHOWN ARE RECORD PER BOOK "U" OF MAPS PAGE 1 P.C.R. NO MATERIAL DISCREPANCIES WITH RECORD INFORMATION WERE FOUND.