

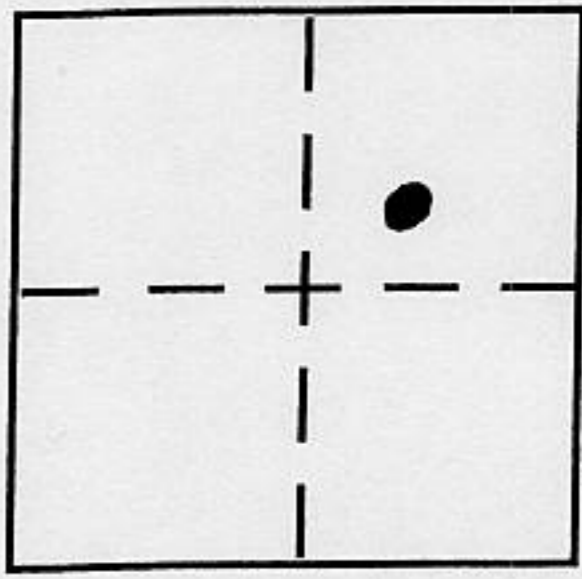
# CORNER RECORD

Document Number \_\_\_\_\_

City of UNINCORPORATED AREA

County of PLACER, California

Brief Legal Description LOT 207 SERENIE LAKES UNIT 5 & 6  
BOOK "J" OF MAPS PAGE 67 P.C.R.



SEC. 27  
T. 17N.  
R. 14E.  
M.O.M.

### CORNER TYPE

Government Corner  Control   
 Meander  Property   
 Rancho  Other   
 Date of Survey 8/22/03

### COORDINATES (Optional)

N. \_\_\_\_\_  
 E. \_\_\_\_\_  
 Zone \_\_\_\_\_ NAD27  NAD83   
 NAD83 Epoch \_\_\_\_\_  
 Elev. \_\_\_\_\_  
 Vert. Datum: NGVD29  NAVD88   
 Meas. Units: Metric  Imperial

Corner - Left as found  Found and tagged  Established  Reestablished  Rebuilt

Identification and type of corner found: Evidence used to identify or procedure used to establish or reestablish the corner:

- = FOUND 5/8" REBAR, NO TAG
- = FOUND 1/2" REBAR, NO TAG
- = FOUND RAILROAD SPIKE @ E E.C. & B.C., PER "J"/MAPS/67.

A description of the physical condition of the monument as found and as set or reset:

- = SET 1" IRON PIPE W/PLASTIC PLUG, L.S. 5549
- ⊗ = SET CHISEL CROSS ON ROCK

JN. 03133

### SURVEYOR'S STATEMENT

This Corner Record was prepared by me or under my direction in conformance with the Land Surveyor's Act on AUGUST 22, 2003

Signed Charles R. Sage P.L.S or R.C.E. No. L.S. 5549  
LIC. EXP. 6-30-05



### COUNTY SURVEYOR'S STATEMENT

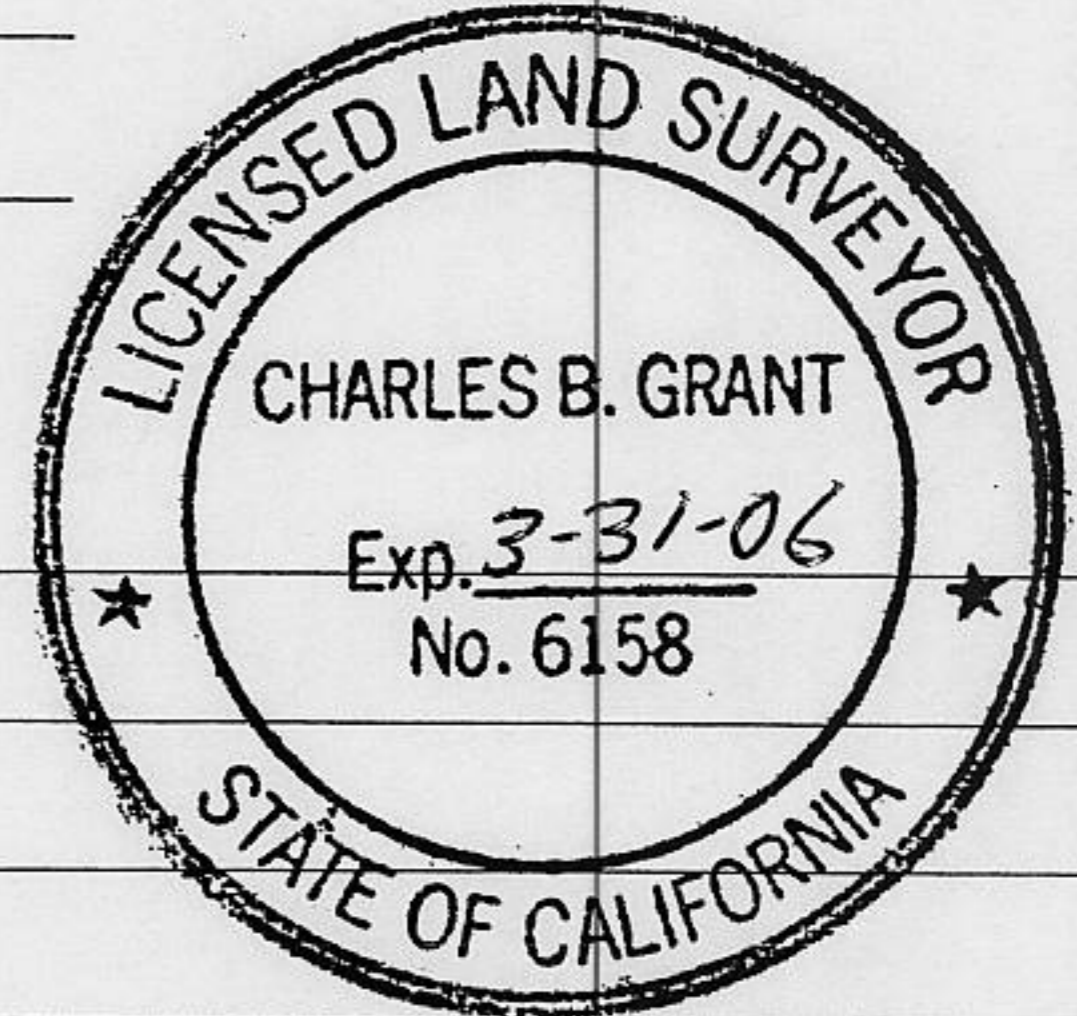
This Corner Record was received OCTOBER 14TH, 2003

and examined and filed NOV. 6, 2003

Signed Charles B. Grant P.L.S or R.C.E. No. LS 6158

Title DEPUTY COUNTY SURVEYOR

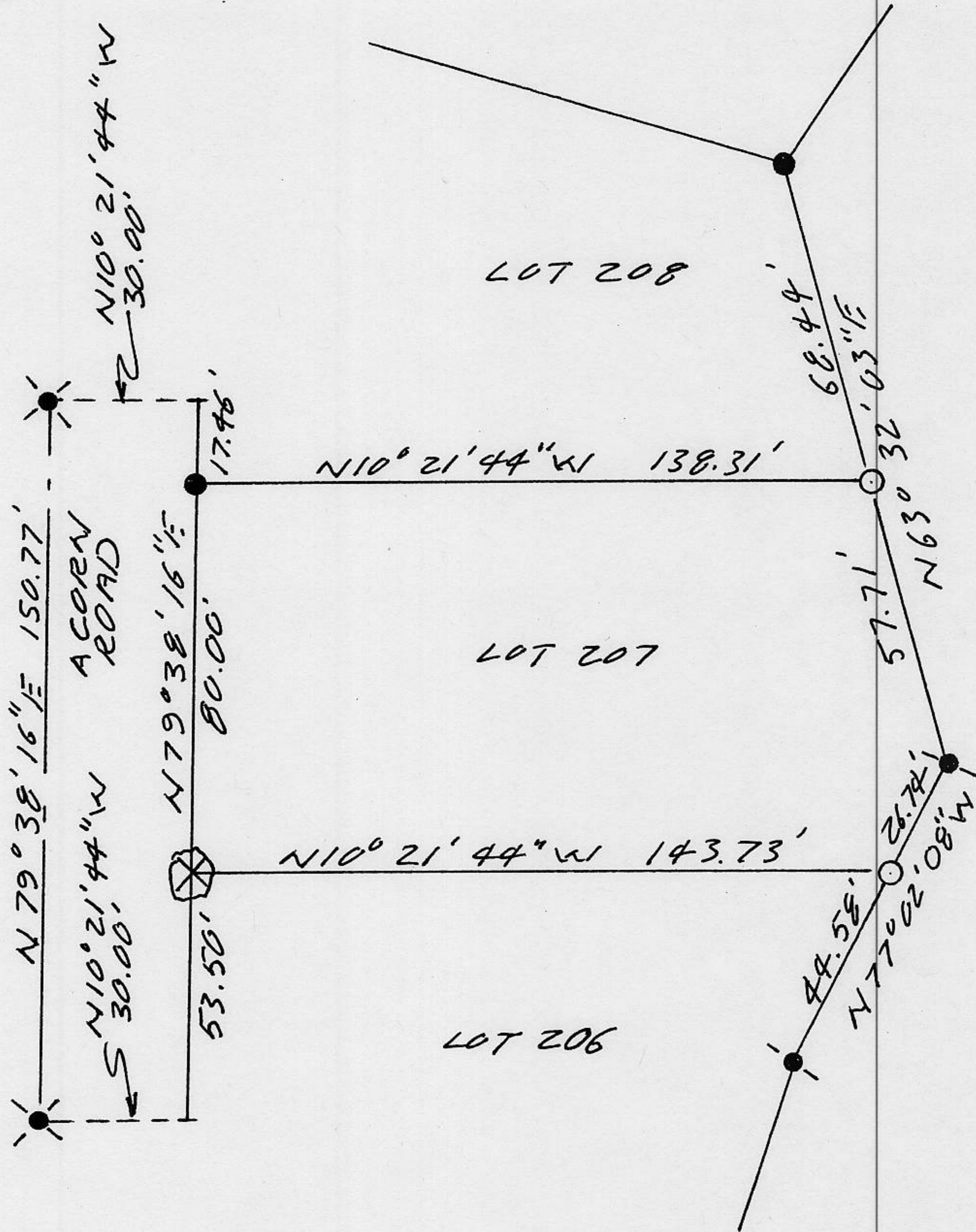
County Surveyor's Comment \_\_\_\_\_



BOOK 8 CORNER RECORDS PAGE 10



SCALE 1"=40'



NOTE: THE BEARINGS AND DISTANCES SHOWN ARE RECORDED PER J/MAPS/67. NO MATERIAL DISCREPANCIES WITH RECORD INFORMATION WERE FOUND