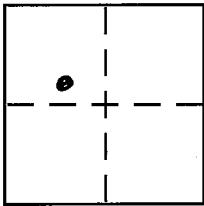


CORNER RECORD

Document Number _____

City of UNINCORPORATED AREA County of PLACER, California

Brief Legal Description LOT 126 ALPINE MEADOWS ESTATES #4
BOOK "H" OF MAPS PAGE 56, P.C.R.



SEC. 4
T. 15N.
R. 16E.
M.D.M.

CORNER TYPE

Government Corner Control
Meander Property
Rancho Other
Date of Survey 8/28/03

COORDINATES (Optional)

N. _____
E. _____
Zone _____ NAD27 NAD83
NAD83 Epoch _____
Elev. _____
Vert. Datum: NGVD29 NAVD88
Meas. Units: Metric Imperial

Corner - Left as found Found and tagged Established Reestablished Rebuilt

Identification and type of corner found: Evidence used to identify or procedure used to establish or reestablish the corner:

● = FOUND 1/2" REBAR w/TAG WIRE, R.C.E. 7595

A description of the physical condition of the monument as found and as set or reset:

○ = SET 1" IRON PIPE w/PLASTIC PLUG L.S. 5549

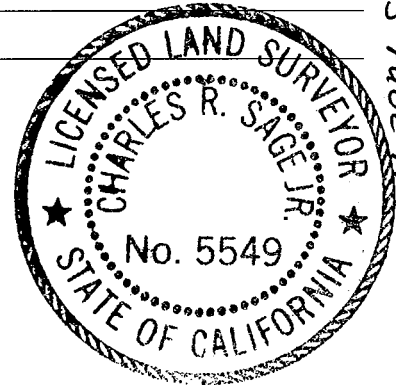
T.N. 03130

SURVEYOR'S STATEMENT

This Corner Record was prepared by me or under my direction in conformance with

the Land Surveyor's Act on AUGUST 28, 2003

Signed Charles R. Sage Jr. P.L.S or R.C.E. No. L.S. 5549
LIC. EXP. 6-30-05



COUNTY SURVEYOR'S STATEMENT

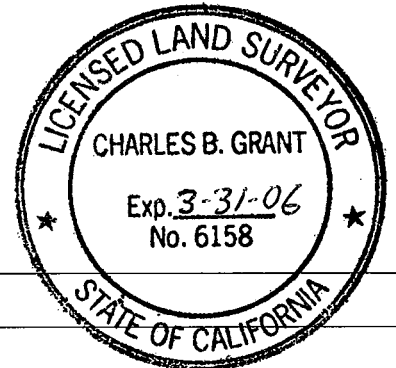
This Corner Record was received OCTOBER 14TH, 2003

and examined and filed Nov. 6, 2003

Signed Charles B. Grant P.L.S or R.C.E. No. LS 6158

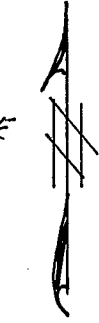
Title DEPUTY COUNTY SURVEYOR

County Surveyor's Comment _____

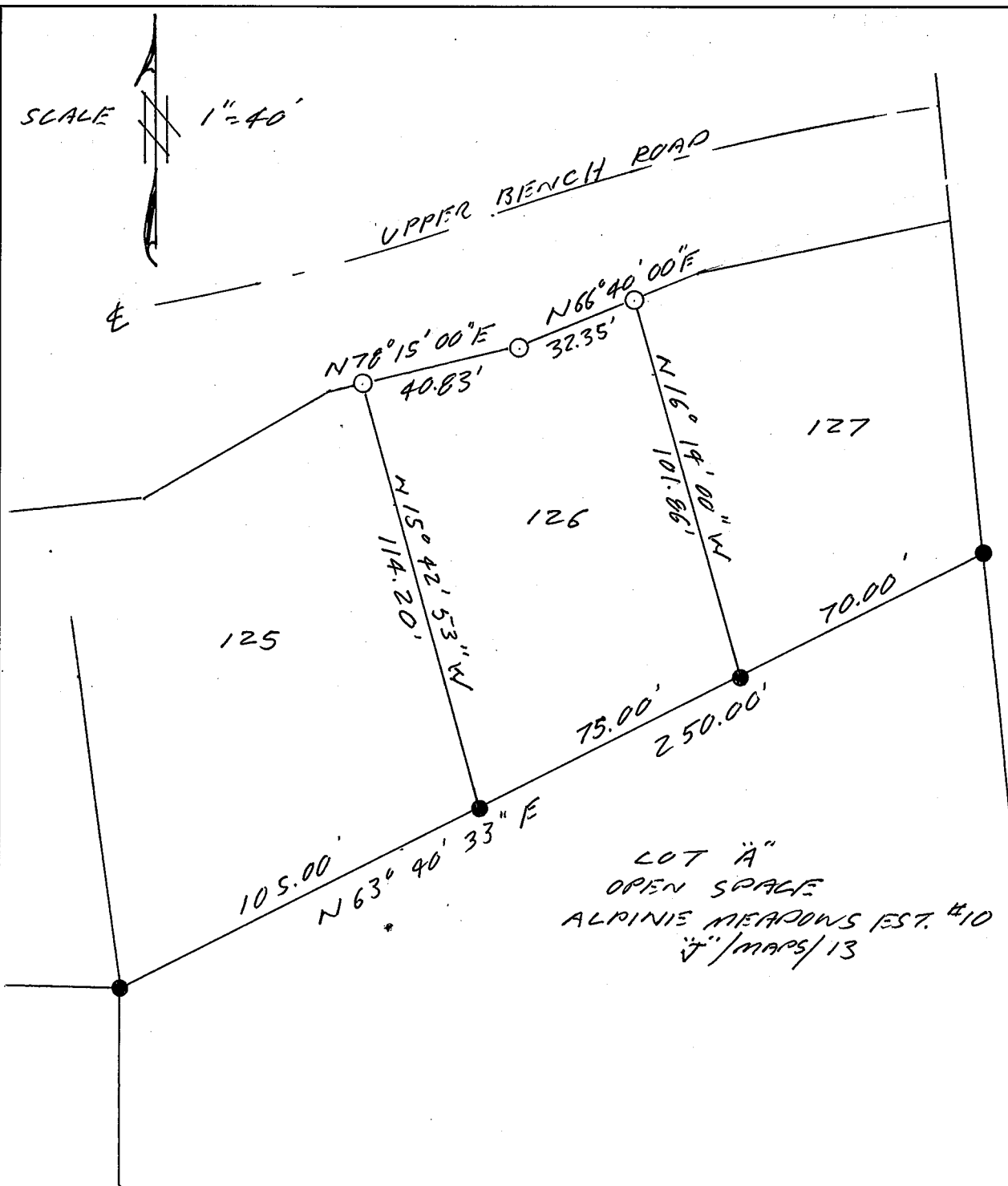


Book 8 CORNER RECORDS PAGE 71

SCALE 1"=40'



UPPER BENCH ROAD



LOT "A"
OPEN SPACE
ALPINE MEADOWS EST. #10
J/MAPS/13

NOTE: THE BEARINGS AND DISTANCES SHOWN
ARE RECORDED PER "H"/MAPS/56. NO MATERIAL
DISCREPANCIES WITH RECORDED INFORMATION
WERE FOUND.